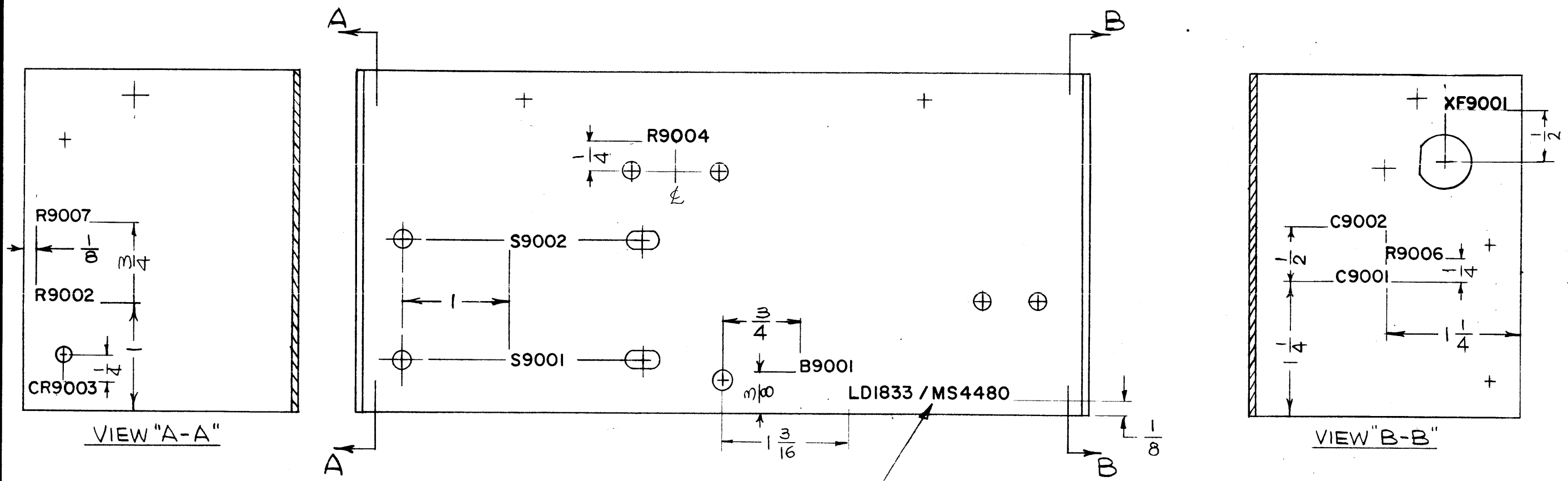


LD1833

REVISIONS					
SYM	DESCRIPTION	DATE	E.M.N. NO.	DRAFT	CHKD APPD
X1	RELOCATED "C9001"; ADD. "C9002", "B9001", "R9002", "S9001", "S9002"	6-8-65		HKA	
X2	CR9003, XF9001 ADDED	8-2-65		RG	
X3	R9006, R9007 ADDED; C9002 RE LOCATED	8-6-65		RG	
Ø	ORIGINAL RELEASE FOR PRODUCTION	5-5-67	Ø	RG	



MARK TMC P/No. WITH LATEST REV. LETTER

REF: MS4480

MARKING PROCESS: AS PER TMC SPECIFICATION S-727.

LETTERING: 1/8 HIGH BLACK GOTHIC, LOCATED AS SHOWN.

NOTES

1	TSTE 10K	
Q'TY./UNIT	MODEL USED ON	ASS'Y. NO.
SCALE 1:1	CODE Δ	

THE CONTENTS OF THIS DRAWING ARE THE EXCLUSIVE PROPERTY OF THE TECHNICAL MATERIEL CORP. ITS UNAUTHORIZED USE OR REPRODUCTION IN WHOLE OR IN PART IS STRICTLY FORBIDDEN.

REQ'D.	ITEM	PART NUMBER	DESCRIPTION	SYMBOL
F. BUDETTI LIST OF MATERIAL				
MATERIAL		THE TECHNICAL MATERIEL CORP. MAMARONECK, NEW YORK		
FINISH		TITLE MARKING, CHASSIS WRAPAROUND MARKING PROCESS: AS PER TMC SPEC. 5727		
UNLESS OTHERWISE SPECIFIED DIMENSIONS ARE IN INCHES AND INCLUDE CHEMICALLY APPLIED OR PLATED FINISHES		DRAWN G.D.L.	DATE 4-29-65	FINAL APPROVAL <i>[Signature]</i> 5/5/67
DECIMALS .X ± .05 .XX ± .01 .XXX ± .005		TOLERANCES		DATE
FRACTIONS ± 1/64 ANGLES ± 0° 30'		DATE		DATE
ELECT. DES. <i>[Signature]</i>		DATE		LD1833
MECH. DES. <i>[Signature]</i>		DATE		Ø
SHEET				REV. LTR.