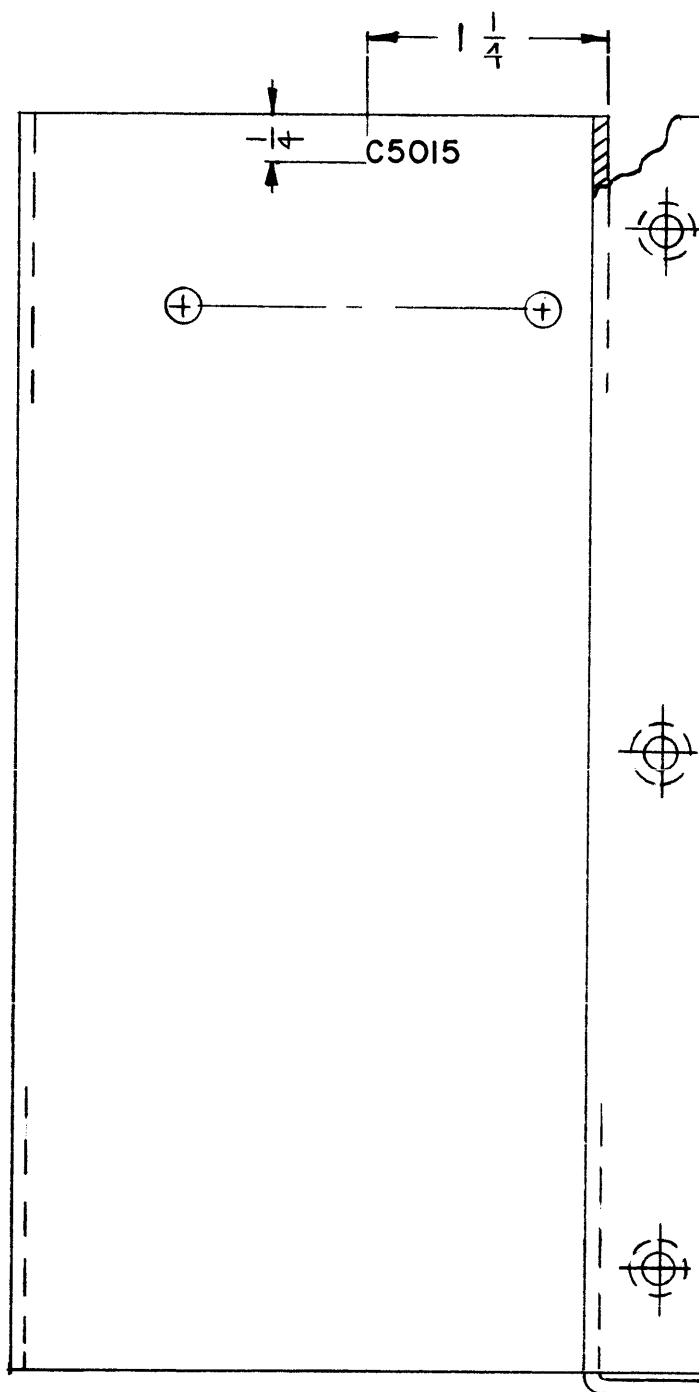
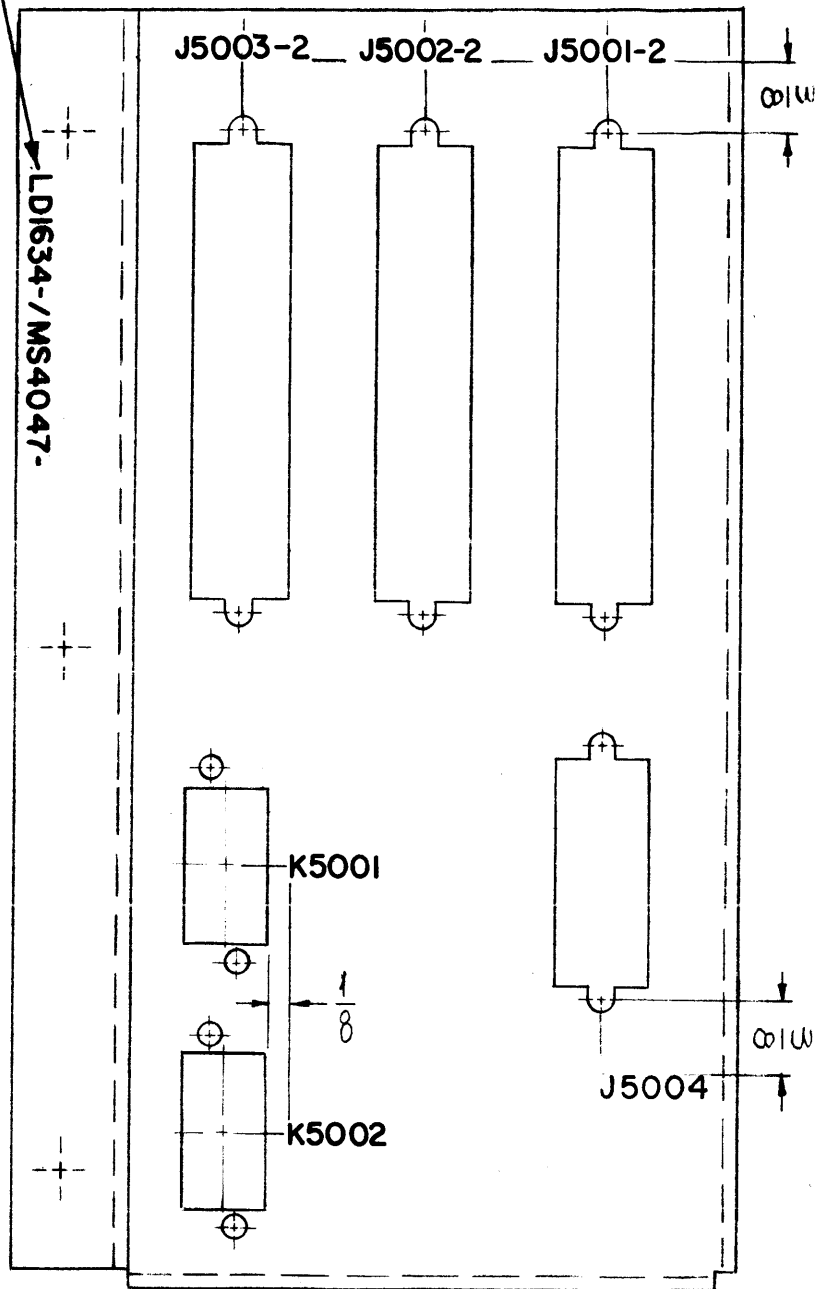


STAMP TMC PART NO, WITH LATEST REVISION LETTER.



A
LD1634

REVISIONS

SYM	DESCRIPTION	DATE	E.M.N. NO.	DRAFT	CHKD	APPD
A	REVISED & REDRAWN FROM #1 SIZE; C5015 ADDED.	3-30-65	13635	JF.	JL	[Signature]

REF: MS4047

MARKING PROCESS: AS PER TMC SPECIFICATION S-727.

LETTERING: 1/8 HIGH BLACK GOTHIC, LOCATED AS SHOWN.

REQ'D.	ITEM	PART NUMBER	DESCRIPTION	SYMBOL
EATON LIST OF MATERIAL				
MATERIAL			THE TECHNICAL MATERIEL CORP. MAMARONECK, NEW YORK	
FINISH			TITLE MARKING, BRACKET MTG. CONNECTOR MARKING PROCESS: AS PER TMC SPEC. S-727	
UNLESS OTHERWISE SPECIFIED DIMENSIONS ARE IN INCHES AND INCLUDE CHEMICALLY APPLIED OR PLATED FINISHES			DRAWN <i>J. Fucina</i>	DATE 3/29/65
			CHECKED	DATE
			ELECT. DES. <i>J.C. Eaton</i>	DATE 3/1/65
			MECH. DES.	DATE
DECIMALS .X ± .05 .XX ± .01 .XXX ± .005			TOLERANCES ± 1/64 ANGLES ± 0° 30'	
1 RTMU-1 A 4052			LD1634	
Q'TY./UNIT SCALE 1:1			FINAL APPROVAL <i>[Signature]</i> DATE 3/1/65	
MODEL USED ON CODE A			SHEET	
ASS'Y. NO.			REV. LTR. A	
THE CONTENTS OF THIS DRAWING ARE THE EXCLUSIVE PROPERTY OF THE TECHNICAL MATERIEL CORP. ITS UNAUTHORIZED USE OR REPRODUCTION IN WHOLE OR IN PART IS STRICTLY FORBIDDEN.				

NOTES