

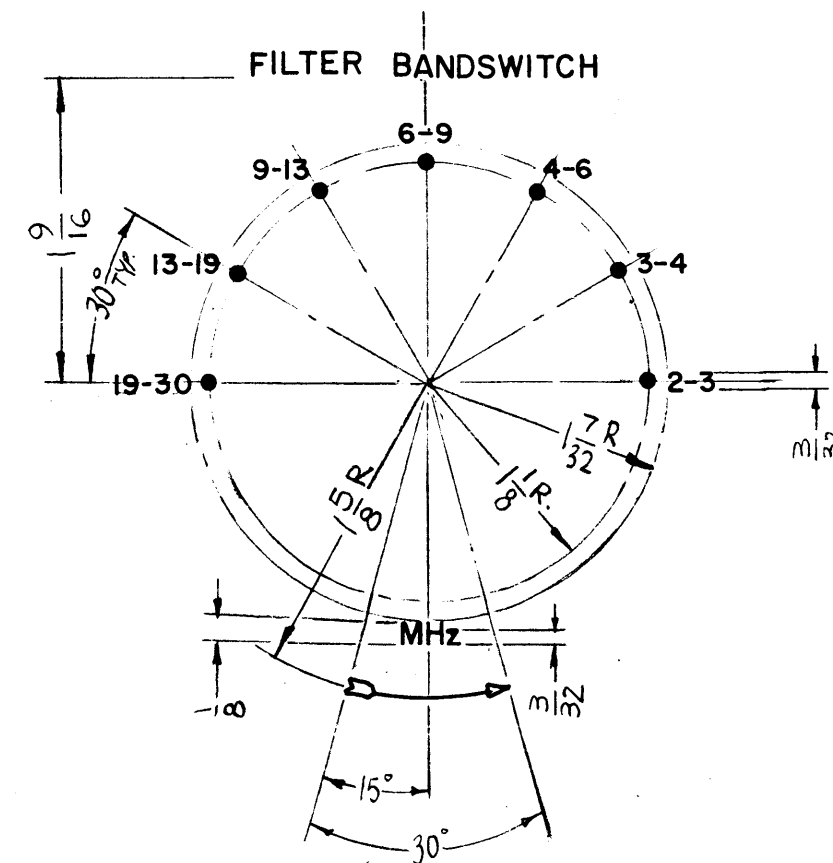
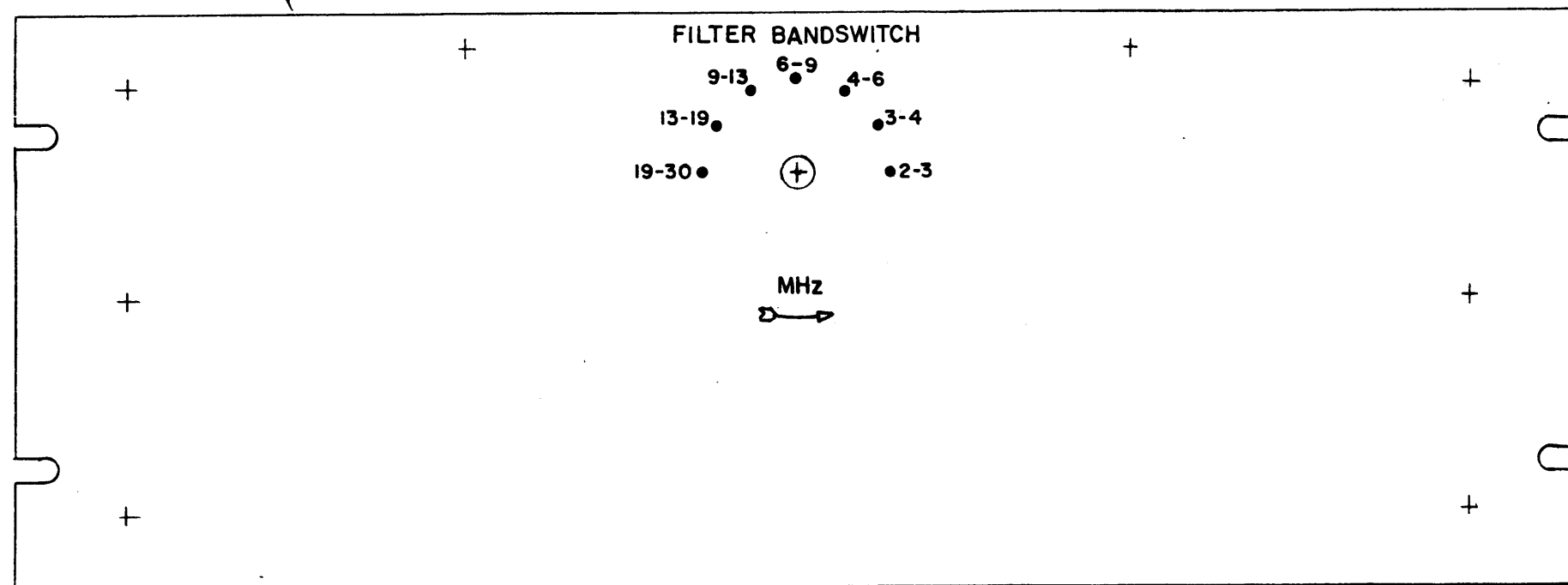
REVISIONS

SYM	DESCRIPTION	DATE	E.M.N. NO.	DRAFT	CHKD	APPD
X	EXP. RELEASE	10-10-66				
X1	SWITCH REVISED	10-17-66				
Ø	ORIGINAL RELEASE FOR PRODUCTION	7/2/69				

LD1496

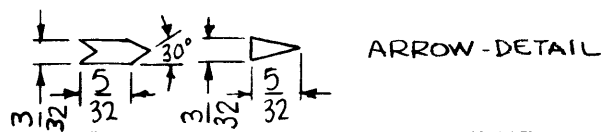
MARK TMC P/N (LD1496)
1/8 HIGH GOTHIC W/LATEST
REV. LETTER. (ON REAR)

ENGRAVING
FRONT VIEW



- UNLESS OTHERWISE SPECIFIED
1. LETTERING TO BE 1/8 HIGH WHITE GOTHIC.
 2. ALL DOTS & LINES TO BE WHITE FILLED.
 3. ALL LETTER GROUPS TO BE CENTERED ON HOLES.
 4. ALL ARROWHEADS 3/32 X 5/32 WHITE OUTLINE FILLED, SEE DETAIL.
 5. ALL ENGRAVING AS PER TMC SPEC S-566.

HEIGHT OF LETTERS	DEPTH OF STROKE	WIDTH OF STROKE
1/8	.010	.020
3/32	.010	.015
DOTS	.010	1/16 DIA.
LINES	.010	.015
ARROWS	.010	SEE NOTE 4



NOTES

TFP-2.5K		ASSY. NO.
Q'TY./UNIT	MODEL USED ON	
SCALE	CODE	S401-451
DO NOT SCALE	A	S401
THE CONTENTS OF THIS DRAWING ARE THE EXCLUSIVE PROPERTY OF THE TECHNICAL MATERIEL CORP. ITS UNAUTHORIZED USE OR REPRODUCTION IN WHOLE OR IN PART IS STRICTLY FORBIDDEN.		

REF: MS3755-

REQ'D.	ITEM	PART NUMBER	DESCRIPTION	SYMBOL
F. BUDETTI LIST OF MATERIAL				
MATERIAL		THE TECHNICAL MATERIEL CORP. MAMARONECK, NEW YORK		
FINISH		TITLE MARKING, PANEL FRONT AS PER TMC SPEC S-566		
UNLESS OTHERWISE SPECIFIED DIMENSIONS ARE IN INCHES AND INCLUDE CHEMICALLY APPLIED OR PLATED FINISHES				
DRAWN	DATE	FINAL APPROVAL		DATE
CHECKED	9-24-66	[Signature]		5/22/69
ELECT. DES.	10/14/66	LD1496		Ø
MECH. DES.	DATE	SHEET	REV. LTR.	