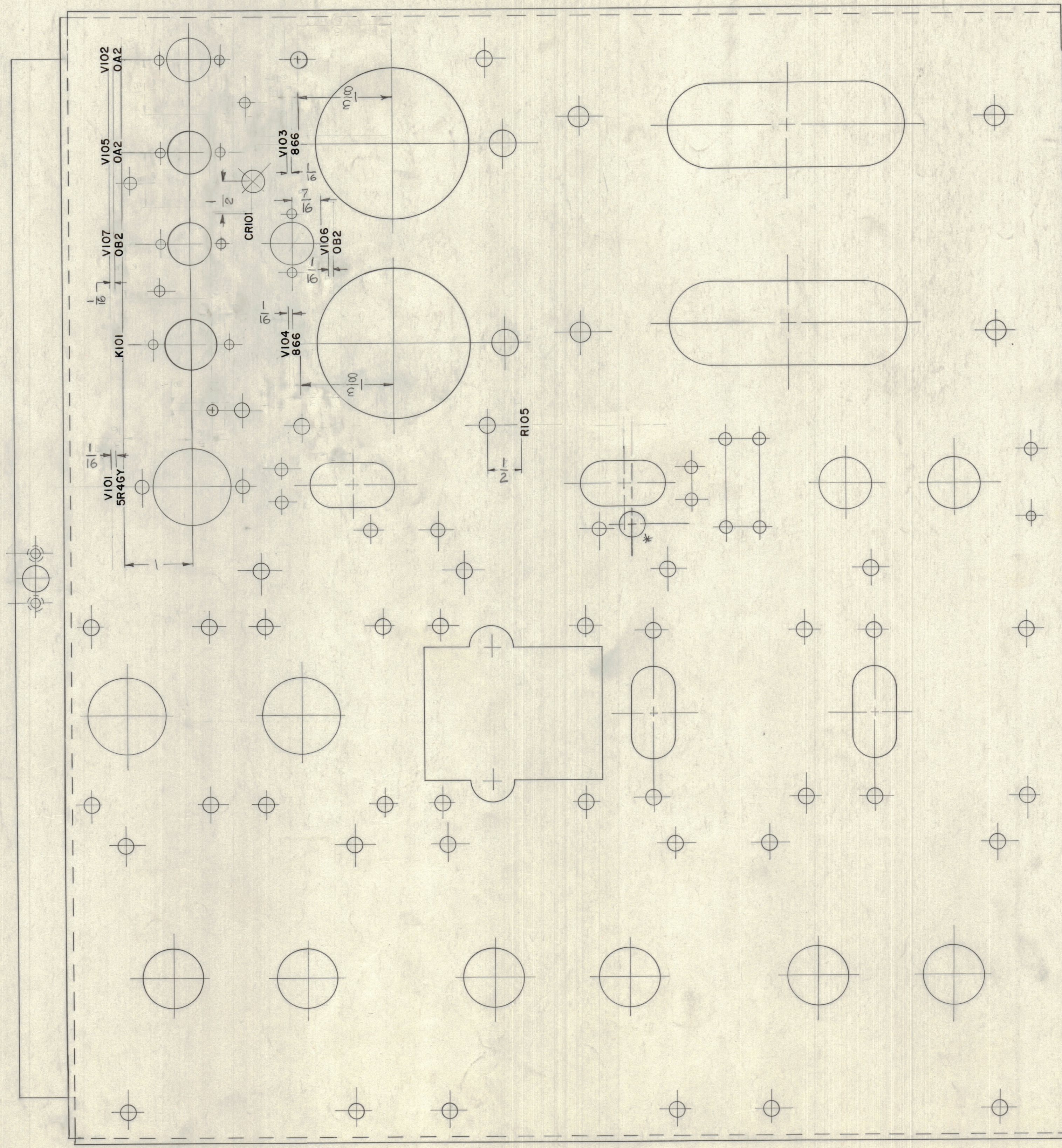
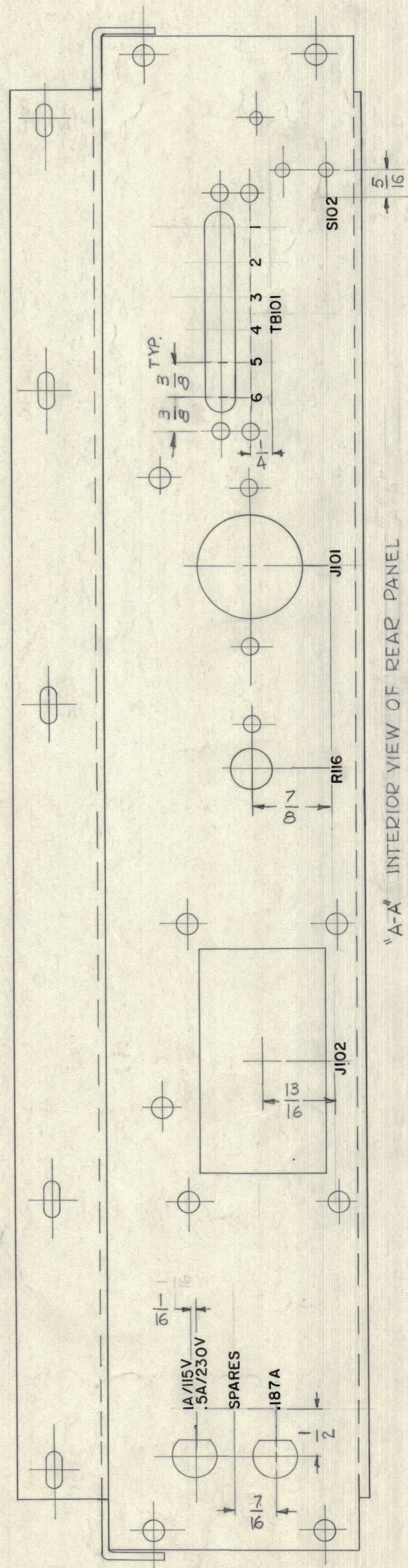


REVISIONS							
ZONE	SYM	DESCRIPTION	DATE	E.M.N. NO.	DRAFT	CHKD	APPD
D6	A	HOLE ADDED TO COMPLY WITH MS-3596	4-14-46	16049	W		



FRONT OF UNIT  
TOP VIEW SHOWN OF UNIT  
INTERIOR VIEW OF REAR PANEL

UNLESS OTHERWISE SPECIFIED  
1. - ALL LETTERING TO BE 1/8 HIGH BLACK GOTHIC  
2. - MARKING PROCESS: AS PER TMC SPEC. 5727  
LOCATE APPROX. AS SHOWN.

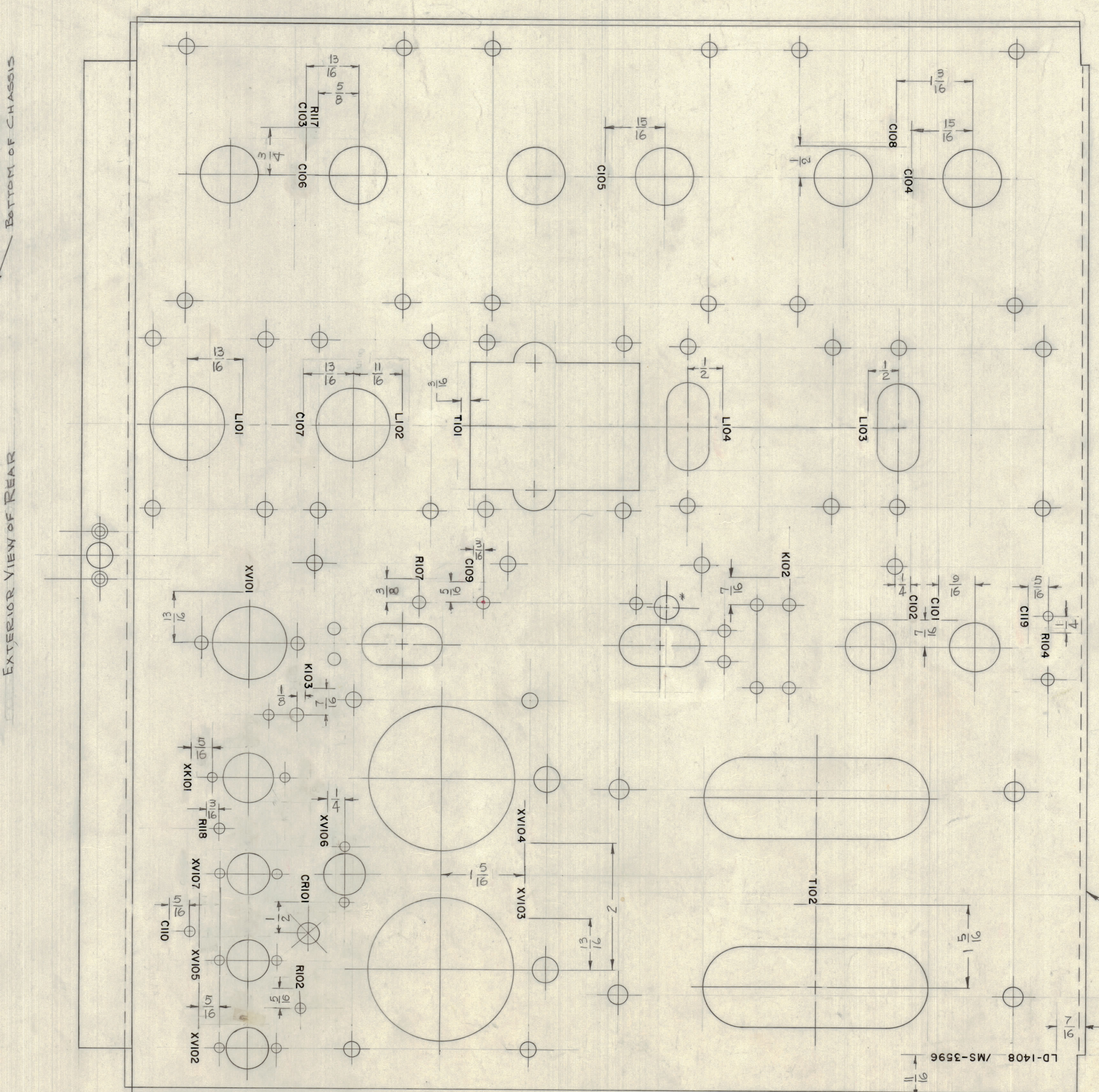
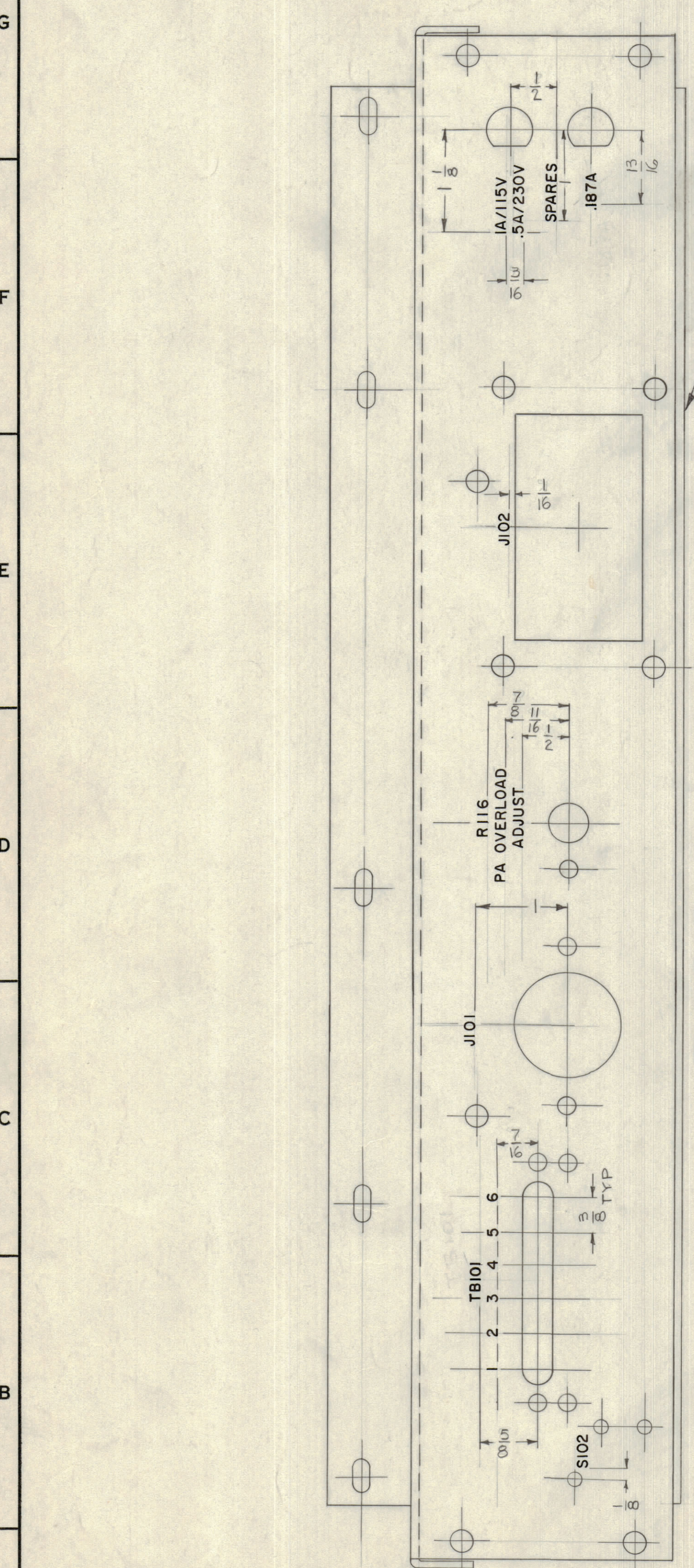
REF: MS-3596

REQ'D.	ITEM	PART NUMBER	DESCRIPTION	SYMBOL
LIST OF MATERIAL				
MATERIAL				
FINISH				
THE TECHNICAL MATERIEL CORP. MAMARONECK, NEW YORK				
TITLE MARKING CHASSIS ELECTRICAL (MAIN) MARKING PROCESS: AS PER TMC SPEC. 5727				
QTY./UNIT	MODEL USED ON	ASSY. NO.	UNLESS OTHERWISE SPECIFIED DIMENSIONS ARE IN INCHES AND INCLUDE CHEMICALLY APPLIED OR PLATED FINISHES	DRAWN DATE 12-6-43
SCALE 1:1	CODE		DECIMALS X ± .05 XX ± .01 XXX ± .005	CHECKED DATE 12-26-43
THE CONTENTS OF THIS DRAWING ARE THE EXCLUSIVE PROPERTY OF THE TECHNICAL MATERIEL CORP. ITS UNAUTHORIZED USE OR REPRODUCTION IN WHOLE OR IN PART IS STRICTLY FORBIDDEN.			FRACTIONS ± 1/64 ANGLES ± 0° 30'	ELECT. DES. DATE 12-30-43
			TOLERANCES	MECH. DES. DATE 12-30-43
				LD-1408 SHEET 1 OF 2
				REV. LTR. A

NOTES

LD-1408 A

REVISIONS						
ZONE	BYM	DESCRIPTION	DATE	E.M.N. NO.	DRAFT	CHKD
D6	A	HOLE # ADDED TO COMPLY WITH MS3596	4-9-63	1649		



BOTTOM VIEW SHOWN

FRONT OF UNIT

- ~ UNLESS OTHERWISE SPECIFIED ~
- 1.- ALL LETTERING 1/8 HIGH BLACK GOTHIC
  - 2.- MARKING PROCESS: AS PER TMC SPEC. 5727 LOCATE APPROX. AS SHOWN.

REQ'D.	ITEM	PART NUMBER	DESCRIPTION	SYMBOL
REF: MS-3596				
LIST OF MATERIAL				
MATERIAL			THE TECHNICAL MATERIEL CORP. MAMARONECK, NEW YORK	
FINISH			TITLE MARKING, CHASSIS, ELECTRICAL (MAIN) MARKING PROCESS: AS PER TMC SPEC. 5727	
QTY./UNIT	MODEL USED ON	ASSY. NO.	UNLESS OTHERWISE SPECIFIED DIMENSIONS ARE IN INCHES AND INCLUDE CHEMICALLY APPLIED OR PLATED FINISHES	DRAWN DATE 12/1/63
SCALE 1/8"	CODE		DECIMALS X ± .05 XX ± .01 XXX ± .005	CHECKED DATE 12/26/63
THE CONTENTS OF THIS DRAWING ARE THE EXCLUSIVE PROPERTY OF THE TECHNICAL MATERIEL CORP. ITS UNAUTHORIZED USE OR REPRODUCTION IN WHOLE OR IN PART IS STRICTLY FORBIDDEN.			FRACTIONS ± 1/64 ANGLES ± 0° 30'	ELECT. DES. DATE 12/26/63
NOTES			MECH. DES. DATE	FINAL APPROVAL DATE
				LD-1408
				2 OF 2
				REV. LTR.

LD-1408 A