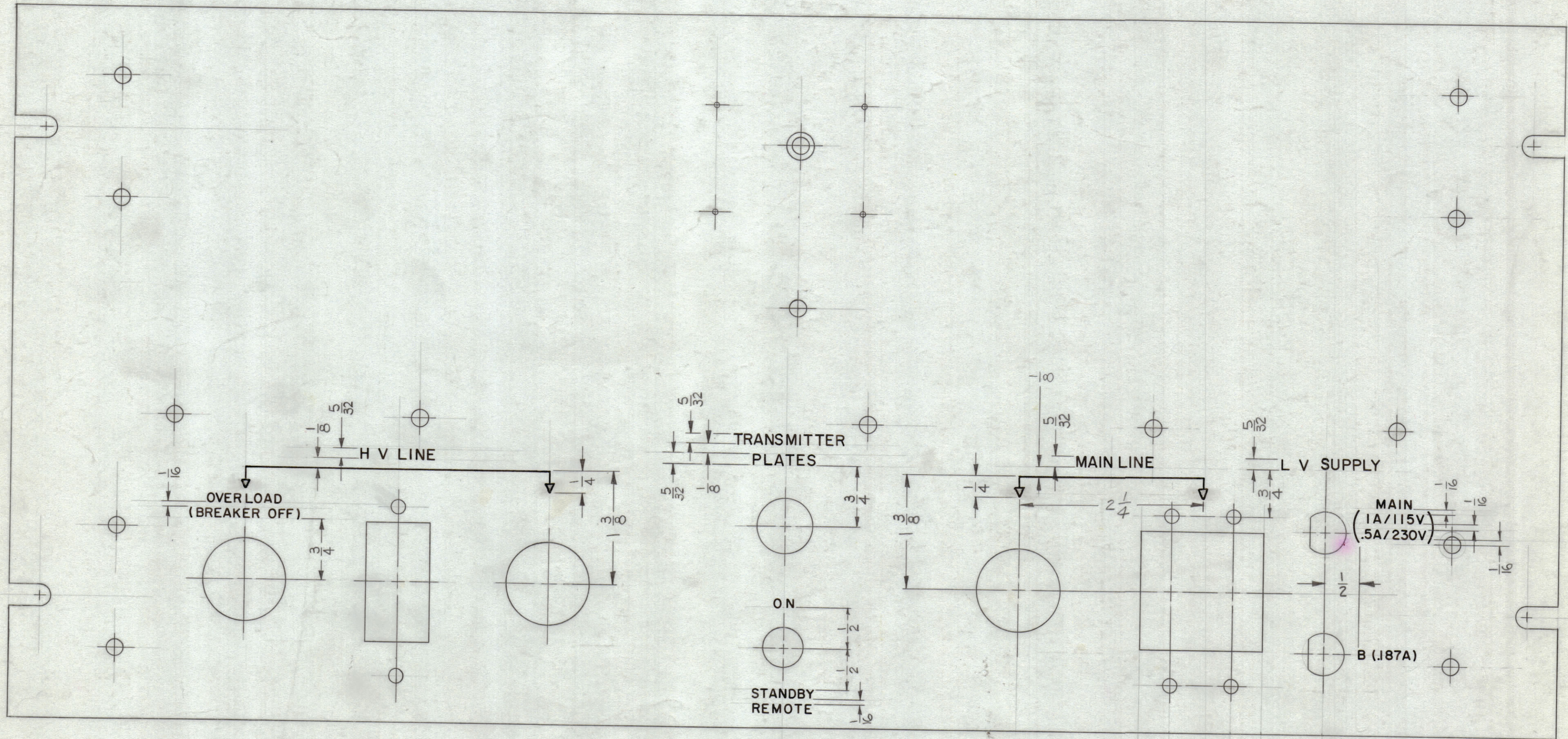


REVISIONS					
ZONE	SYM	DESCRIPTION	DATE	E.M.N. NO.	APPD



FRONT OF PANEL SHOWN

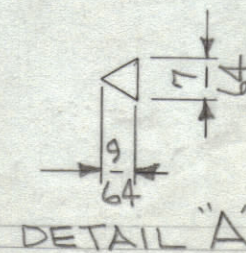
UNLESS OTHERWISE SPECIFIED ~

- 1.- ALL LETTERS TO BE 1/8 HIGH WHITE FILLED GOTHIC.
- 2.- ALL LETTERING TO BE CENTERED ABOUT HOLES LOCATE APPROX. AS SHOWN.
- 3.- ENGRAVING IN ACCORDANCE WITH TMC SPEC. 5-566 (SEE CHART)

HEIGHT OF LETTERS	DEPTH OF STROKE	WIDTH OF STROKE
5/32	.010	.020
1/8	.010	.020
DOTS	.010	1/16 DIA
LINES	.010	.015
ARROWHEADS	.010	

- 4.- ALL ARROWHEADS TO BE WHT. OUTLINE FILL (SEE DETAIL "A").

NOTES



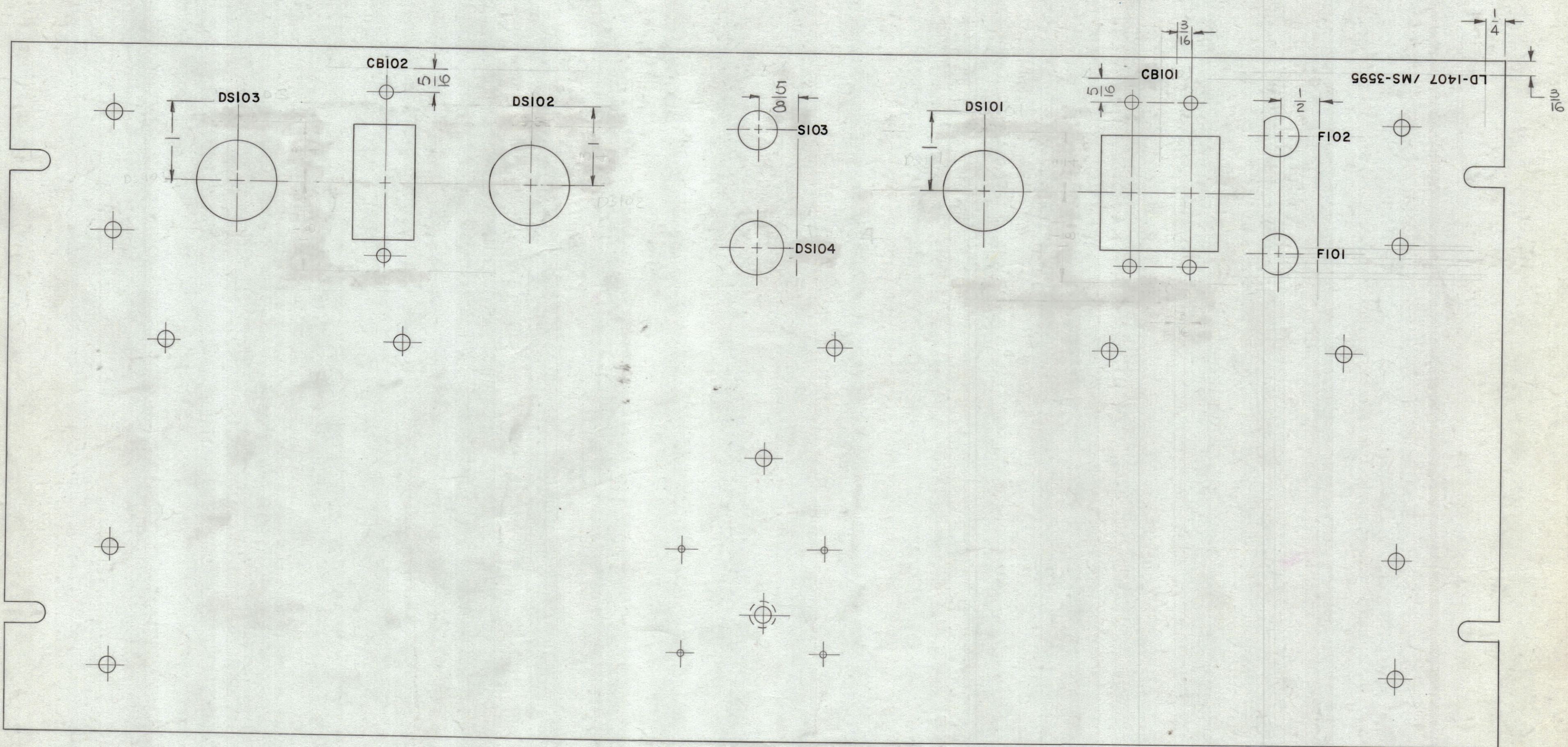
REF: M5-3595

REQ'D.	ITEM	PART NUMBER	DESCRIPTION	SYMBOL
HAY LIST OF MATERIAL				
THE TECHNICAL MATERIEL CORP. MAMARONECK, NEW YORK				
TITLE MARKING, FRONT PANEL MARKING METHOD: ENGRAVING				
DRAWN <i>Shaw</i>		DATE 12-4-63		FINAL APPROVAL
CHECKED <i>JL</i>		DATE 12-19-63		DATE
ELECT. DES.		DATE		LD-1407
MECH. DES.		DATE 12/24/63		SHEET 1 OF 2
REV. LTR.				

1	PSP-350A	
Q'TY./UNIT	MODEL USED ON	ASS'Y. NO.
SCALE 1:1	CODE A	
THE CONTENTS OF THIS DRAWING ARE THE EXCLUSIVE PROPERTY OF THE TECHNICAL MATERIEL CORP. ITS UNAUTHORIZED USE OR REPRODUCTION IN WHOLE OR IN PART IS STRICTLY FORBIDDEN.		
DECIMALS .X ± .05 .XX ± .01 .XXX ± .005	TOLERANCES	FRACTIONS ± 1/64 ANGLES ± 0° 30'

LD-1407

REVISIONS							
ZONE	SYM	DESCRIPTION	DATE	E.M.N. NO.	DRAFT	CHKD	APPD



TOP
REAR OF PANEL SHOWN

- ~ UNLESS OTHERWISE SPECIFIED ~
1. - ALL LETTERING TO BE 1/8 HIGH BLACK GOTHIC.
MARKING PROCESS: AS PER TMC SPEC. 5727.
 2. - ALL LETTERING TO BE CENTERED ABOUT ϕ 's OF HOLES. LOCATE APPROX. AS SHOWN.

REF: M5-3595

REQ'D.	ITEM	PART NUMBER	DESCRIPTION	SYMBOL
HAY LIST OF MATERIAL				
MATERIAL			THE TECHNICAL MATERIEL CORP. MAMARONECK, NEW YORK	
FINISH			TITLE MARKING, FRONT PANEL MARKING METHOD: AS PER TMC SPEC. 5727	
UNLESS OTHERWISE SPECIFIED DIMENSIONS ARE IN INCHES AND INCLUDE CHEMICALLY APPLIED OR PLATED FINISHES		DRAWN <i>L. Davis</i>	DATE 12/4/63	FINAL APPROVAL <i>BP</i>
DECIMALS .X ± .05 .XX ± .01 .XXX ± .005		CHECKED <i>J. De</i>	DATE 12-19-63	DATE
TOLERANCES FRACTIONS ± 1/64 ANGLES ± 0° 30'		ELECT. DES.	DATE	DATE
THE CONTENTS OF THIS DRAWING ARE THE EXCLUSIVE PROPERTY OF THE TECHNICAL MATERIEL CORP. ITS UNAUTHORIZED USE OR REPRODUCTION IN WHOLE OR IN PART IS STRICTLY FORBIDDEN.		MECH. DES. <i>MMK</i>	DATE 12/26/63	DATE
NOTES			LD-1407	
			SHEET 2 OF 2	
			REV. LTR.	

LD-1407