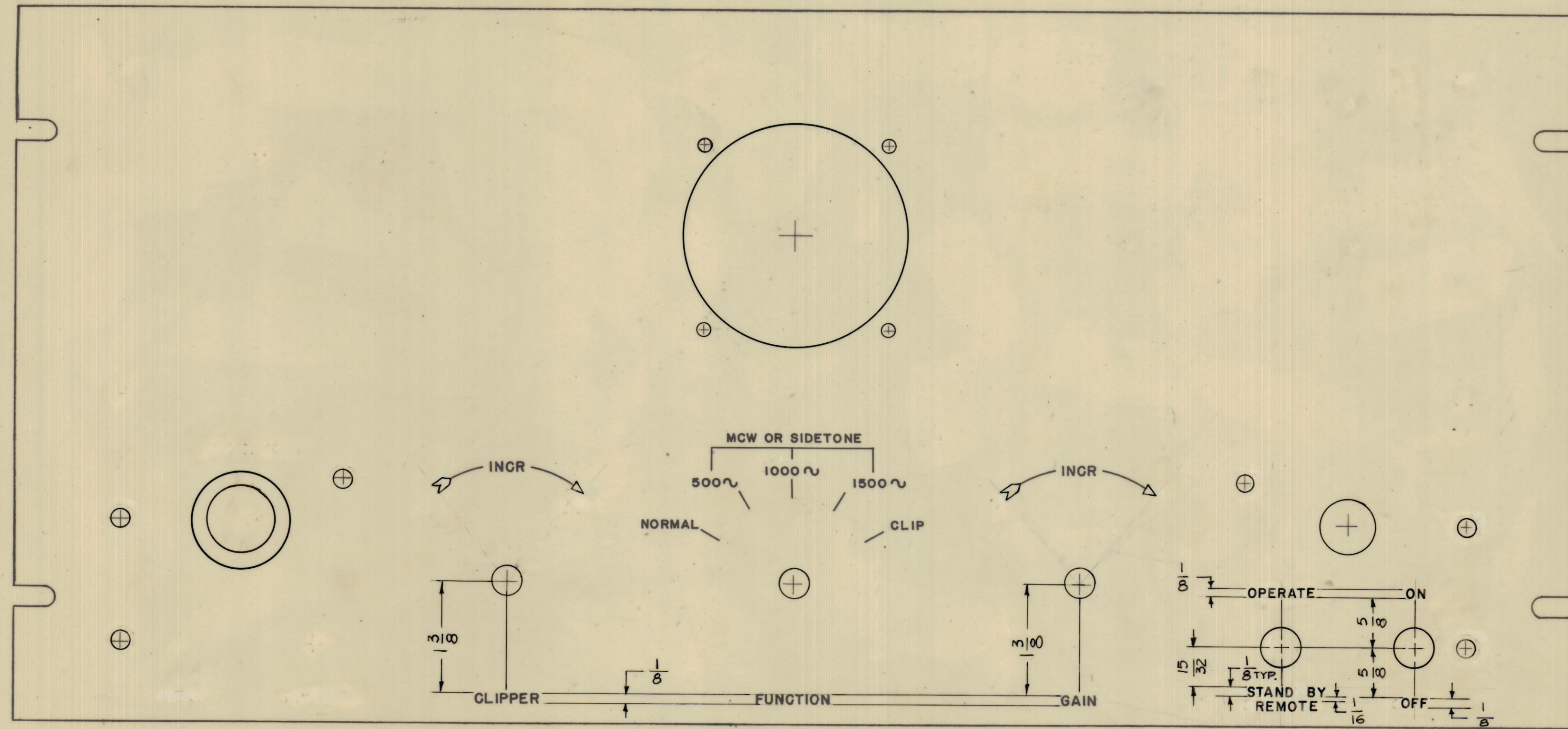
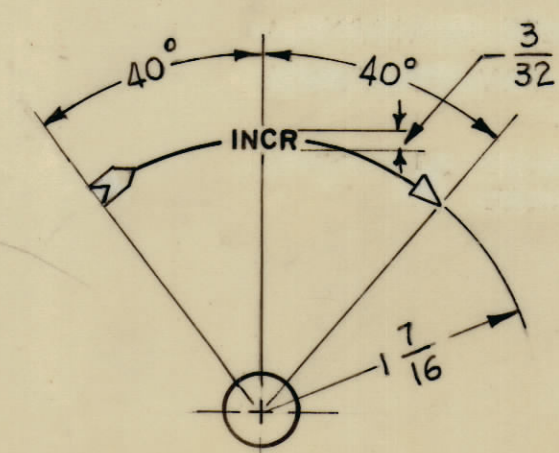


IF IT IS FOUND DESIRABLE TO CHANGE ANY TOLERANCE OR OTHER DETAIL SPECIFIED ON THIS DRAWING NOTIFY THE PURCHASER PROMPTLY.  
 MAXIMUM ALLOWABLE TOLERANCES HAVE BEEN DETERMINED AND DEVIATIONS WILL BE CAUSE FOR REJECTION. REMOVE ALL BURRS AND SHARP EDGES

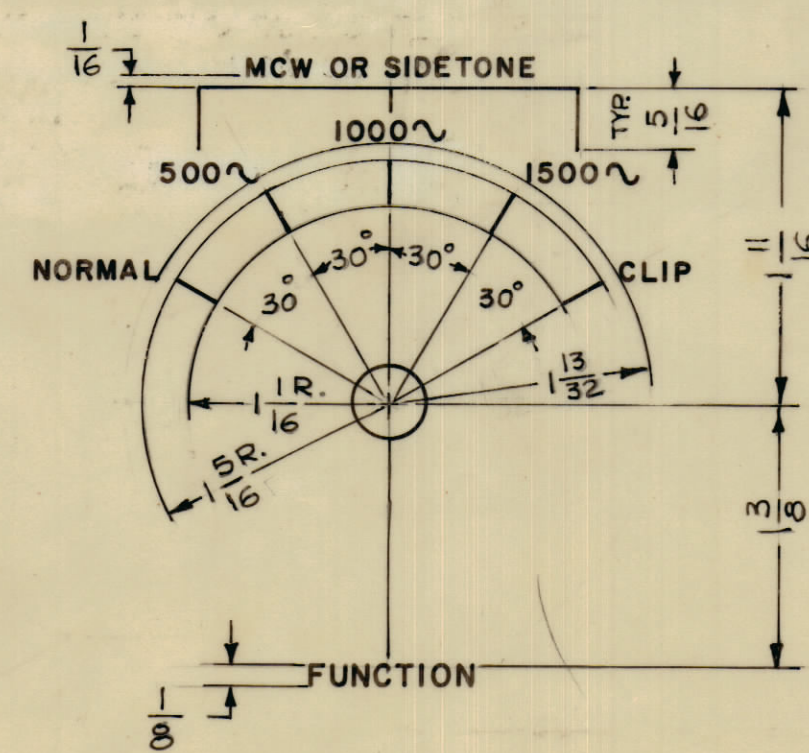
**NOTICE TO PERSONS RECEIVING THIS DRAWING**  
 THE TECHNICAL MATERIEL CORPORATION claims proprietary right in the material disclosed hereon. This drawing is issued in confidence for engineering information only and may not be reproduced or used to manufacture anything shown hereon without permission from THE TECHNICAL MATERIEL CORPORATION to the user. This drawing is loaned for mutual assistance and is subject to recall at any time.  
 Property of:  
 THE TECHNICAL MATERIEL CORPORATION  
 MAMARONECK, NEW YORK



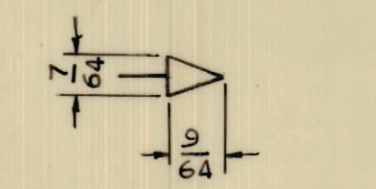
FRONT OF PANEL SHOWN



ANGLE DISPLACEMENT



ANGLE DISPLACEMENT  
 ALL LETTERING IN THIS DETAIL 3/32



ARROW HEAD DETAIL  
 SCALE=2:1

- UNLESS OTHERWISE SPECIFIED
- 1) ALL LETTERING TO BE WHITE FILLED.
  - 2) ALL LINES TO BE WHITE FILLED.
  - 3) ALL ARROWHEADS AND TAILS TO BE WHITE OUTLINE FILL.(SEE DETAIL)
  - 4) ALL LETTER GROUPS TO BE CENTERED ON HOLES
  - 5) ENGRAVING TO BE GOTHIC WHITE FILLED SIZE SHOWN ON CHART.

HEIGHT OF LETTER	DEPTH OF STROKE	WIDTH OF STROKE
3/32	.010	.015
1/8	.010	.020
LINES	.010	.015
ARROWHEADS AND TAILS	.010	.015

REF. DWG MS-3491

REQ. ITEM	PART NO.	DESCRIPTION	SYMBOL
		THE TECHNICAL MATERIEL CORP. MAMARONECK, NEW YORK	
		MARKING, FRONT PANEL	
		MARKING, METHOD: ENGRAVING	
		G.D.L.	
		DRAWN	ELEG. DES. APP. MECH. DES. APP.
		CHECKED	FINAL APPROVAL
		SHEET	
		1 OF 2	LD-1356

ISSUE	ITEM	CHANGED FROM	DATE	EN. NO.	DRAFTS	CHECKER	ENG. APP.

TOLERANCES  
 ALL OTHERS DEC. DIM. ±  
 FRAC. DIM. ±  
 ANGULAR DIM. ±

DRILL PUNCH, COMMERCIAL STOCK  
 SIZES AND MANUFACTURERS  
 TOLERANCES ARE NOT INCLUDED.

REQ. PER UNIT	MODEL	PROJECT NO.	ASSY. NO.	DATE
1	RTC-2			9-17-63

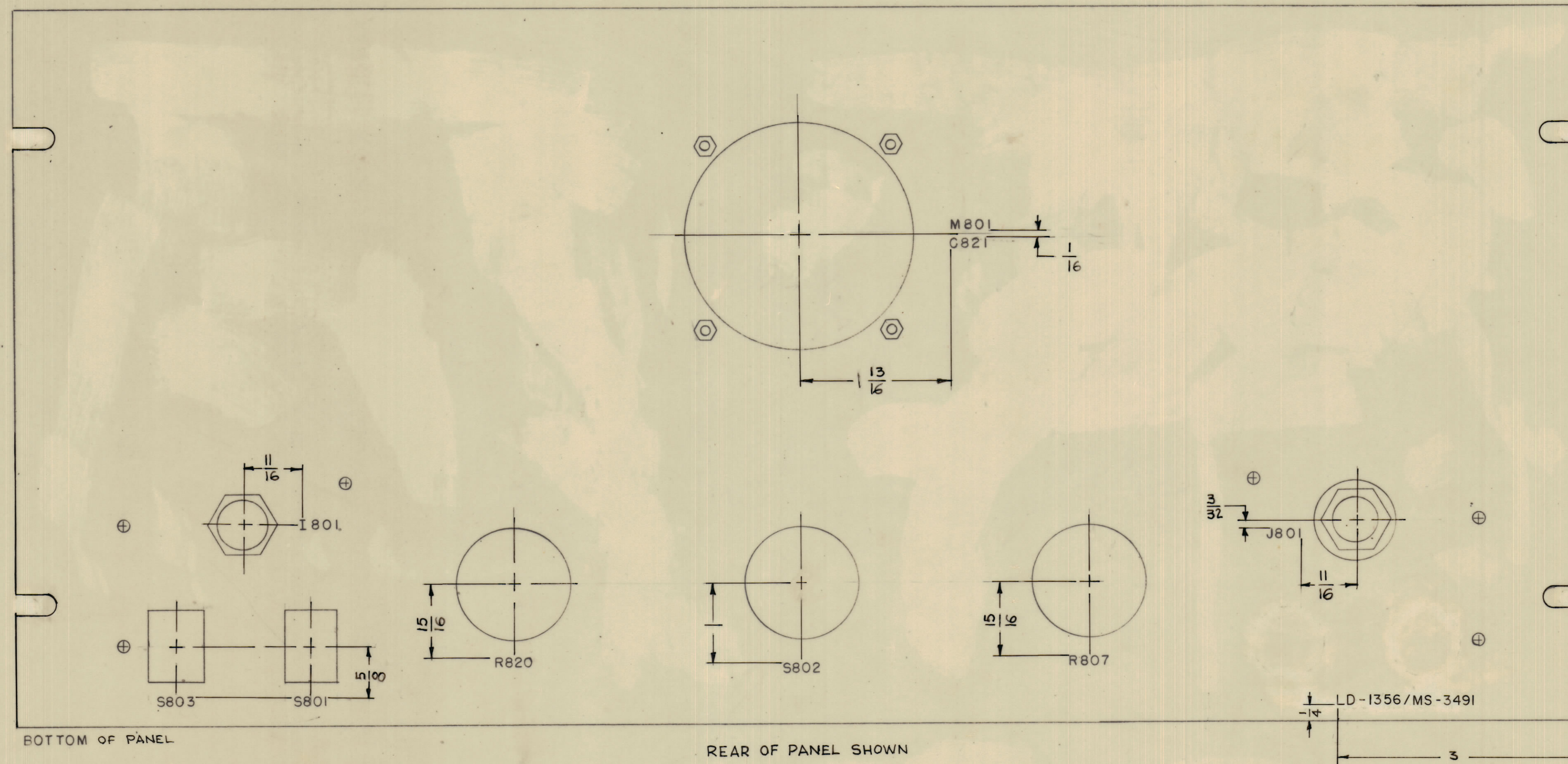
LD-1356

IF IT IS FOUND DESIRABLE TO CHANGE ANY TOLERANCE OR OTHER DETAIL SPECIFIED ON THIS DRAWING NOTIFY THE PURCHASER PROMPTLY.  
 MAXIMUM ALLOWABLE TOLERANCES HAVE BEEN DETERMINED AND DEVIATIONS WILL BE CAUSE FOR REJECTION. REMOVE ALL BURRS AND SHARP EDGES

**NOTICE TO PERSONS RECEIVING THIS DRAWING**

THE TECHNICAL MATERIEL CORPORATION claims proprietary right in the material disclosed hereon. This drawing is issued in confidence for engineering information only and may not be reproduced or used to manufacture anything shown hereon without permission from THE TECHNICAL MATERIEL CORPORATION to the user. This drawing is loaned for mutual assistance and is subject to recall at any time.

Property of:  
 THE TECHNICAL MATERIEL CORPORATION  
 MAMARONECK, NEW YORK



- NOTE -  
 UNLESS OTHERWISE SPECIFIED:  
 MARKING PROCESS : AS PER TMC SPEC. S-727  
 LETTERING : 1/8 BLACK, GOTHIC LOCATED AS SHOWN

LD-1356

Ø	ORIGINAL RELEASE FOR PRODUCTION	6/26/63	GE	
ISSUE	ITEM	CHANGED FROM	DATE	CN. NO. DRAFTS CHECKER ENG. APP.
TOLERANCES				
SCALE: 1:1				
ALL OTHERS	DEC. DIM. ±	DRILL, PUNCH, COMMERCIAL STOCK SIZES AND MANUFACTURERS TOLERANCES ARE NOT INCLUDED.		
	FRACTIONAL DIM. ±			
	ANGULAR DIM. ±			

1	REQ. PER UNIT	MODEL	PROJECT NO.	ASSY. NO.	DATE
		RTC-2			9-17-63
USED ON					

REF: MS-3491

REQ. ITEM	PART NO.	DESCRIPTION	SYMBOL
THE TECHNICAL MATERIEL CORP. MAMARONECK, NEW YORK			
STOCK SIZE			
MARKING, REAR OF FRONT PANEL			
MARKING METHOD: PER TMC S-727			
MATERIAL		WEIGHT PER PC.	
G. D. L.			
TYPE & TEMPER		DRAWN	
HEAT TREAT. SPEC.		ELEC. DES. APP. MECH. DES. APP.	
FINISH & SPEC. NO.		CHECKED	
		FINAL APPROVAL	
		SHEET	
		2 OF 2	
		LD-1356	