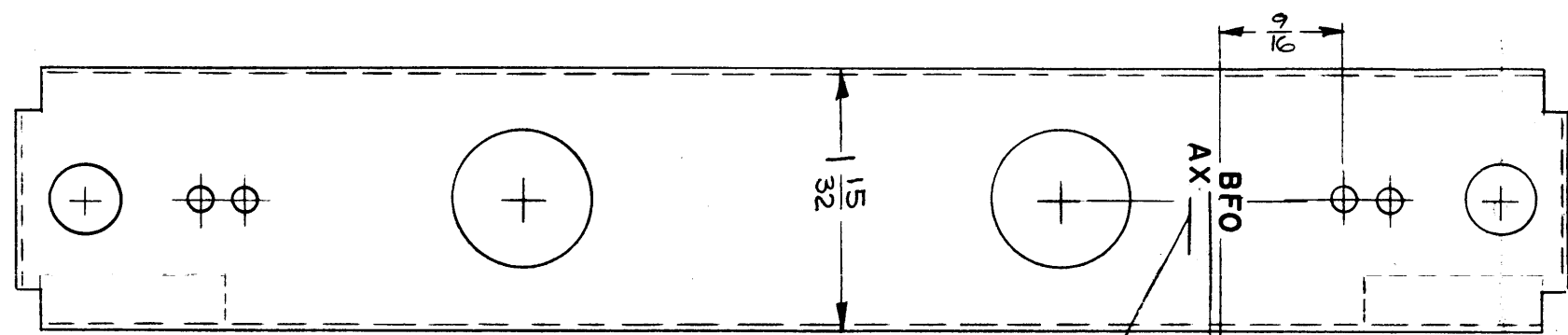


LD 1349 A

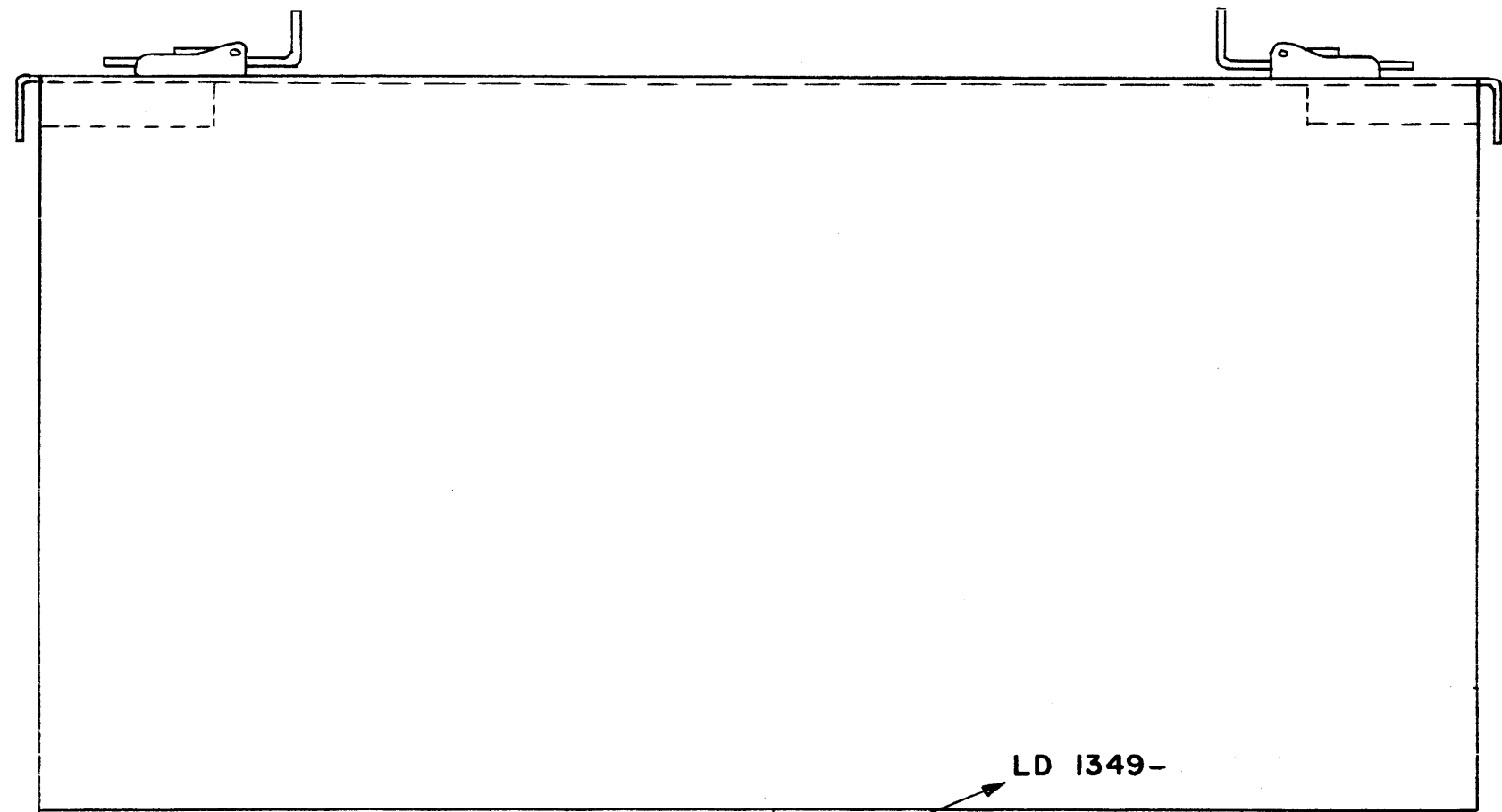
REVISIONS

SYM	DESCRIPTION	DATE	E.M.N. NO.	DRAFT	CHKD	APPD
X1	DIM 1-15/32 ADDED TO TOP VIEW	9-24-63	1	G.S.		
X2	LETTERING AX-424 WAS A3168	12/17/63	2	GF		
O	ORIGINAL RELEASE FOR PRODUCTION	5-12-64	0	A.M.		
A	LD1349-2 ADDED, MARKING MS3425 DELETED	2-2-66	15603			



INSERT NO.
PER CHART

TMC P/N	INSERT NO.	USED ON	REQ.
LD1349	AX424	VLRA-1	1
LD1349-2	AX597	VLRE-1	1



LD 1349-
MARK TMC PART *W/LATEST REV. LET.

- UNLESS OTHERWISE SPECIFIED -

MARKING PROCESS: AS PER TMC SPECIFICATION S-727.
LETTERING: 1/8 HIGH BLACK GOTHIC, LOCATED AS SHOWN.

REF: MS 3425

REQ'D.	ITEM	PART NUMBER	DESCRIPTION	SYMBOL
M. GELLMAN LIST OF MATERIAL				
MATERIAL		THE TECHNICAL MATERIEL CORP. MAMARONECK, NEW YORK		
FINISH		TITLE MARKING, COVER - BFO MODULE MARKING METHOD - AS PER S-727		
UNLESS OTHERWISE SPECIFIED DIMENSIONS ARE IN INCHES AND INCLUDE CHEMICALLY APPLIED OR PLATED FINISHES		DRAWN G. Sauer	DATE 8-8-63	FINAL APPROVAL [Signature]
		CHECKED [Signature]	DATE 5-7-64	
DECIMALS .X ± .05 .XX ± .01 .XXX ± .005		FRACTIONS ± 1/64 ANGLES ± 0° 30'		TOLERANCES
ELECT. DES [Signature]		DATE 5-7-64	LD 1349	A
MECH. DES [Signature]		SHEET		REV. LTR.

NOTES

THE CONTENTS OF THIS DRAWING ARE THE EXCLUSIVE PROPERTY OF THE TECHNICAL MATERIEL CORP. ITS UNAUTHORIZED USE OR REPRODUCTION IN WHOLE OR IN PART IS STRICTLY FORBIDDEN.