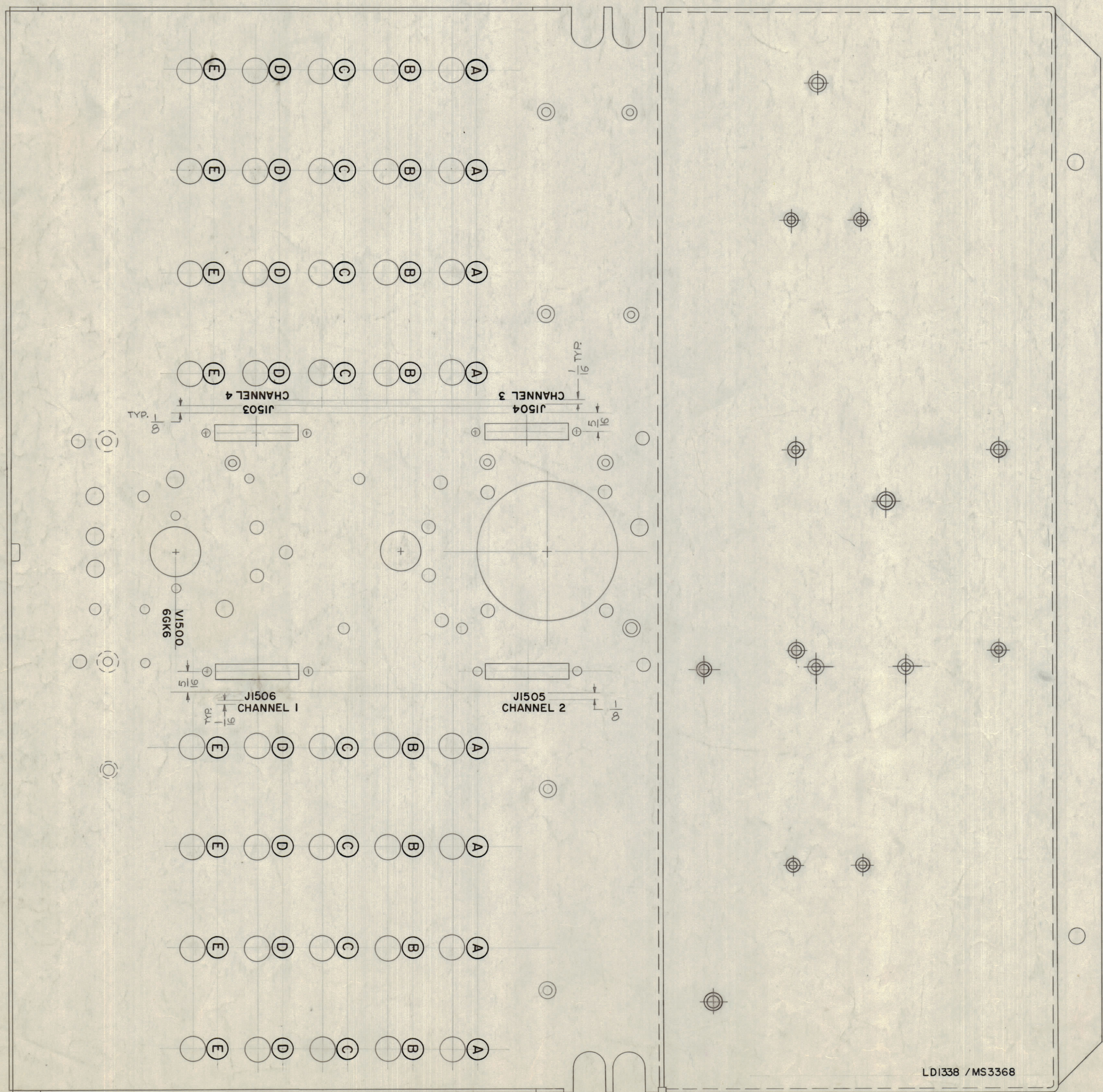
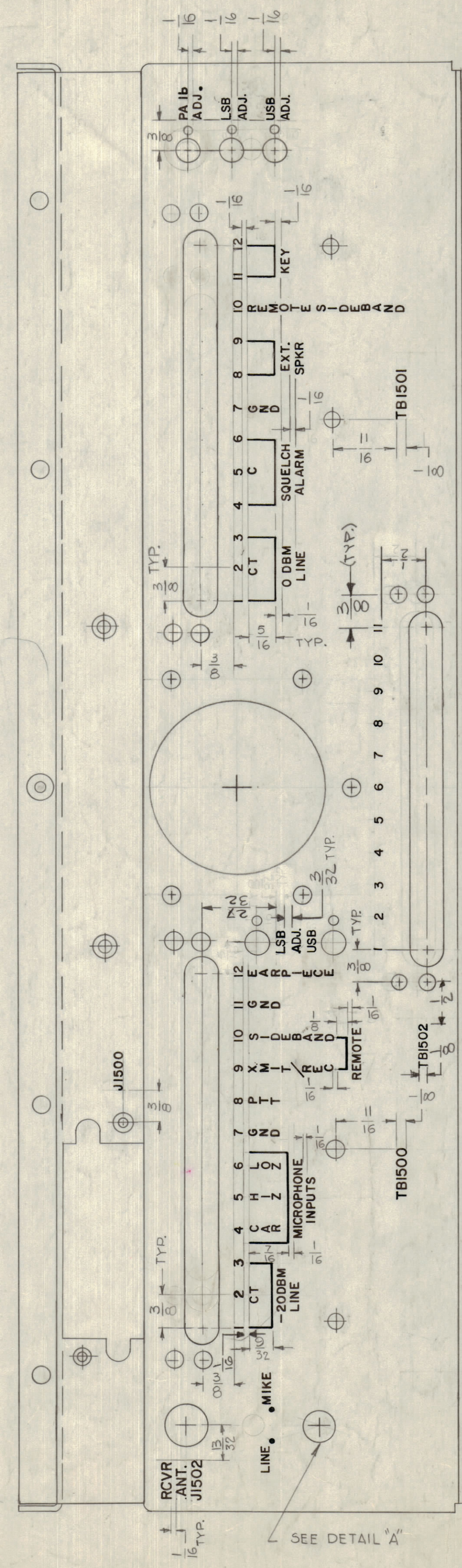


REVISIONS						
ZONE	SYM	DESCRIPTION	DATE	E.M.N. NO.	DRAFT	CHKD - APPD
4G	A	LSB ADJ & USB ADJ. PLUS HOLES ADDED.	7-21-64	1195B	SEC	JW
D4	B	ON REAR VIEW, CENTER CLUSTERS ADDED.	10-29-64	12788	RE	JW
C7	C	2 HOLES ADD. TO CONFORM WITH MS336 B REV. F"	2-4-65	13278	JL	JW
	D	TB1502 LETTERING, LSB, NOT, ASB ADDED	8-4-64	14609	FE	JW



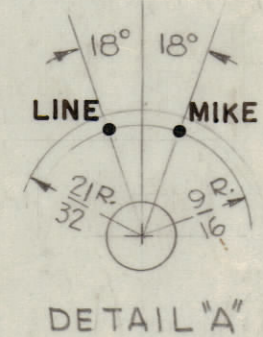
TOP VIEW

LD1338 / MS3368



REAR VIEW

- UNLESS OTHERWISE SPECIFIED
1. ALL LETTERING TO BE 3/32 HIGH BLACK GOTHIC MARKING PROCESS: AS PER TMC SPEC 5727.
 2. LETTERING TO BE CENTERED ABOUT CENTER LINES OF HOLES. LOCATE APPROX. AS SHOWN
 3. CIRCLES TO BE 5/16 DIA. BLACK.
 4. ALL LETTERING ON CIRCLES TO BE 3/16 HIGH BLACK GOTHIC
 5. ALL LINES TO BE BLACK WIDTH OF STROKE .015



DETAIL "A"

REF: MS-3368

REQ'D.	ITEM	PART NUMBER	DESCRIPTION	SYMBOL
JORDAN LIST OF MATERIAL E3087-2				
MATERIAL		THE TECHNICAL MATERIEL CORP. MAMARONECK, NEW YORK		
FINISH		TITLE MARKING, MAIN CHASSIS (TOP)		
QTY./UNIT	MODEL USED ON	DATE	FINAL APPROVAL	DATE
SCALE	CODE	DATE	DATE	DATE
UNLESS OTHERWISE SPECIFIED DIMENSIONS ARE IN INCHES AND INCLUDE CHEMICALLY APPLIED OR PLATED FINISHES		DRAWN	DATE	DATE
DECIMALS ±.05		CHECKED	DATE	DATE
FRACTIONS ± 1/64		DATE	DATE	DATE
ANGLES ±.01		MECH. DES.	DATE	DATE
TOLERANCES ±.005		DATE	DATE	DATE

TIP-10		
QTY./UNIT	MODEL USED ON	ASSY. NO.
SCALE	CODE	
1:1	A	

NOTES

THE CONTENTS OF THIS DRAWING ARE THE EXCLUSIVE PROPERTY OF THE TECHNICAL MATERIEL CORP. ITS UNAUTHORIZED USE OR REPRODUCTION IN WHOLE OR IN PART IS STRICTLY FORBIDDEN.

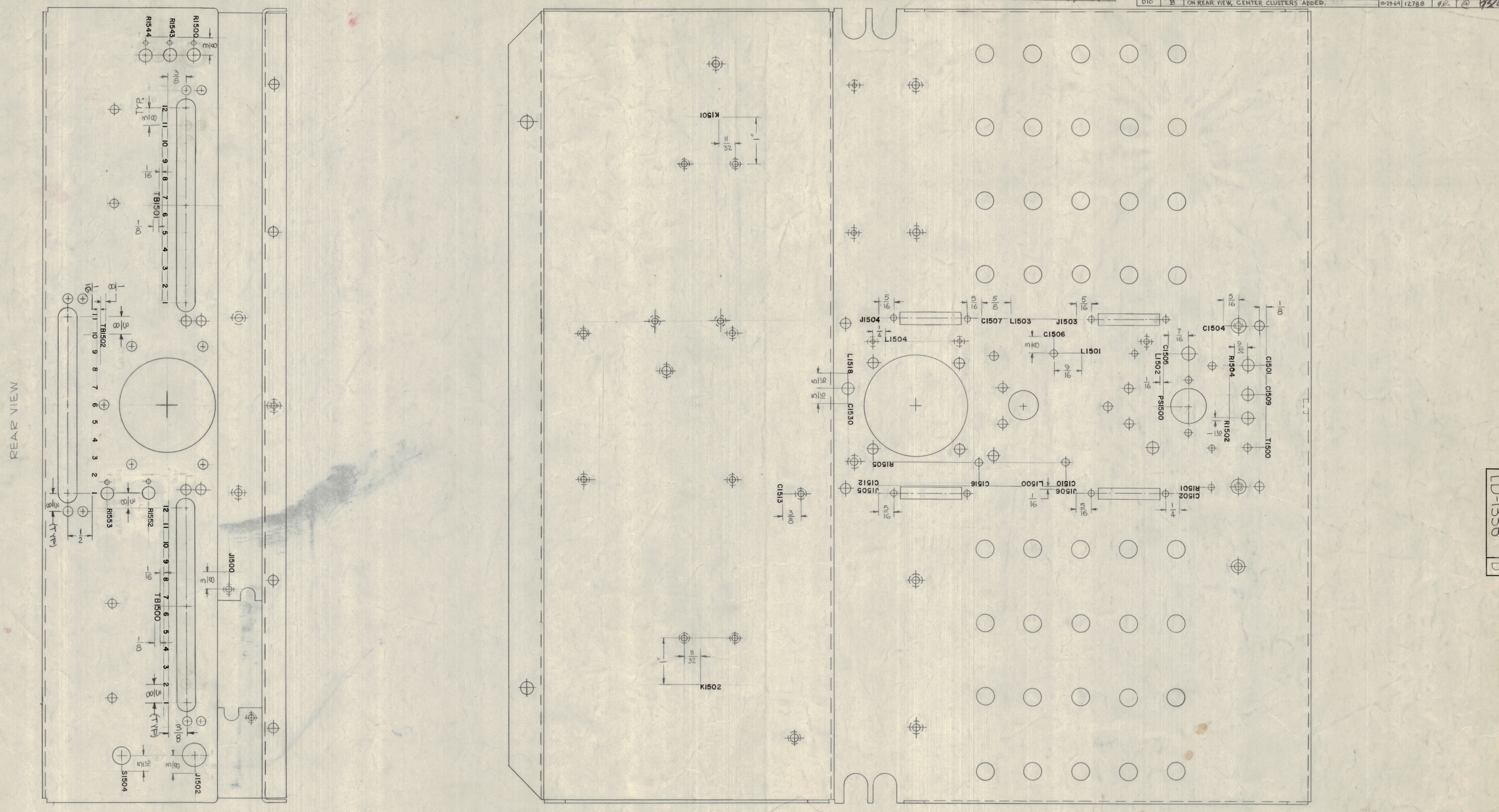
UNLESS OTHERWISE SPECIFIED DIMENSIONS ARE IN INCHES AND INCLUDE CHEMICALLY APPLIED OR PLATED FINISHES

LD-1338 D

LD-1338 D

ZONE	SYM	DESCRIPTION	DATE	EM. NO.	DRAFT	CHKD.	APPD.
E6,7	C	2 HOLES ADD. TO CONFORM WITH H5338 REV. F.	2-4-65	13278	3		
D,19	D	4 HOLES ADD. TO CONFORM WITH M6336B, SEE SHEET 1 OF 2	8-4-67	14604	3		

ZONE	SYM	DESCRIPTION	DATE	EM. NO.	DRAFT	CHKD.	APPD.
4G	A	R1543, R1544 ADDED; 2 HOLES ADDED	7-31-64	11958	3		
D10	B	ON REAR VIEW, CENTER CLUSTERS ADDED.	10-29-64	12788	3		



- UNLESS OTHERWISE SPECIFIED~
1. ALL LETTERING TO BE 3/32 HIGH BLACK GOTHIC MARKING PROCESS; AS PER TMC SPEC. 5727.
 2. ALL LETTERING TO BE CENTERED ABOUT CENTER LINES OF HOLES. LOCATE APPROX. AS SHOWN

NOTES

REF: MS-3368

REQ'D.	ITEM	PART NUMBER	DESCRIPTION	SYMBOL	
		JORDAN	LIST OF MATERIAL E3037-2		
MATERIAL		THE TECHNICAL MATERIEL CORP. MAMARONECK, NEW YORK			
FINISH		TITLE MARKING, MAIN CHASSIS BOTTOM VIEW			
QTY./UNIT	MODEL USED ON	DATE	FINAL APPROVAL		
SCALE 1:1	CODE A	DATE 2-4-69	DATE 3-2-69		
THE CONTENTS OF THIS DRAWING ARE THE EXCLUSIVE PROPERTY OF THE TECHNICAL MATERIEL CORP. ITS UNAUTHORIZED USE OR REPRODUCTION IN WHOLE OR IN PART IS STRICTLY FORBIDDEN.		DECIMALS ± .05 XX ± .01 XXX ± .005	FRACTIONS ± 1/64 ANGLES ± 0° 30'	ELECT. DES. W. JORDAN	DATE 1-16-67
			MECH. DES. W. JORDAN	DATE 1/16/64	
			SHEET 2 OF 2	REV. LTR. D	

LD-1338 D