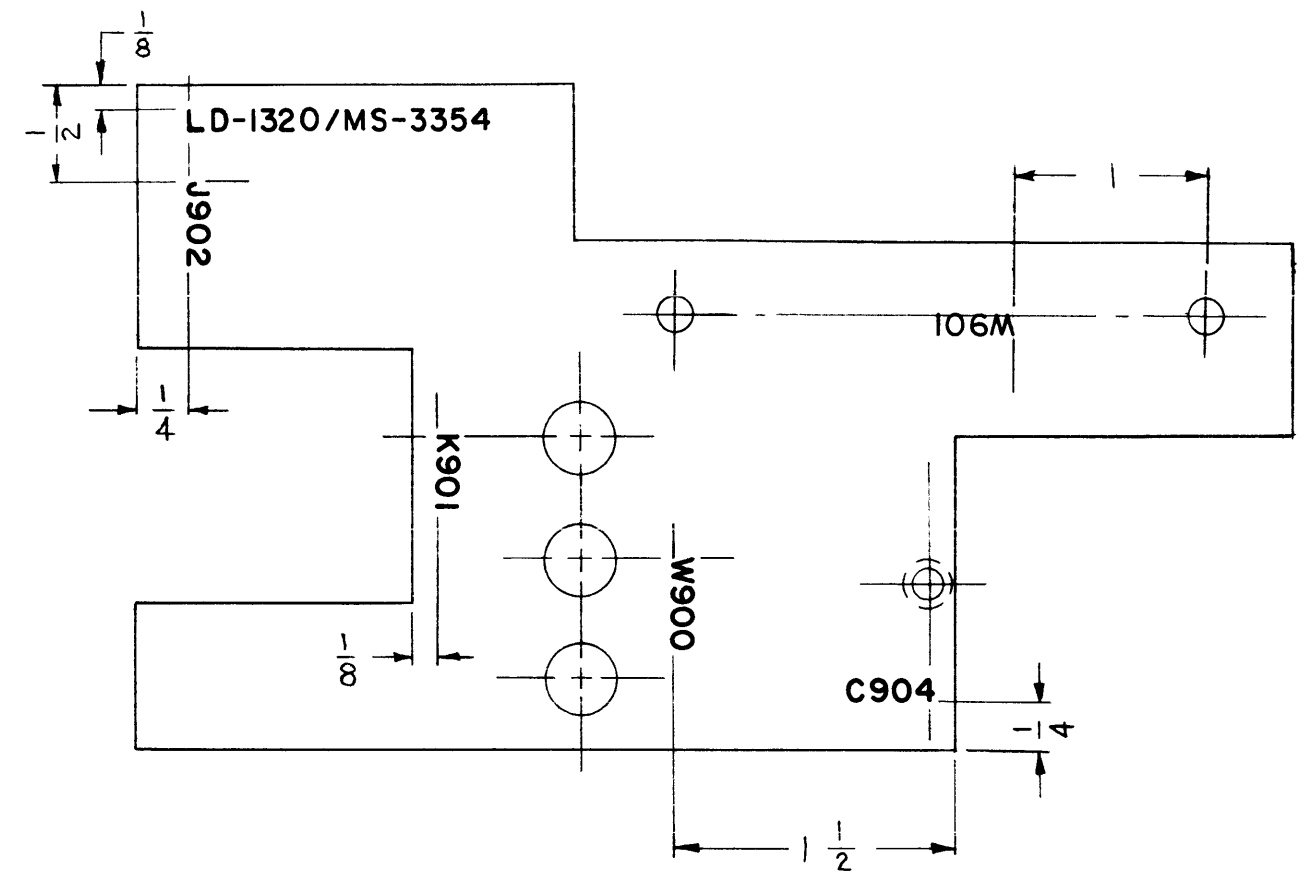


LD-1320

REVISIONS

| SYM | DESCRIPTION | DATE | E.M.N. NO. | DRAFT | CHKD | APPD |
|-----|-------------|------|------------|-------|------|------|
|-----|-------------|------|------------|-------|------|------|



~ UNLESS OTHERWISE SPECIFIED ~
 ALL LETTERING TO BE 1/8 HIGH BLACK GOTHIC,
 MARKING PROCESS: PER TMC SPEC 5727
 LOCATE APPROX. AS SHOWN.

REF: MS-3354

| REQ'D. | ITEM | PART NUMBER | DESCRIPTION | SYMBOL |
|---|------|---|---------------------------------|--------------------------|
| | | JORDAN | LIST OF MATERIAL E3037-117 (LD) | |
| MATERIAL | | THE TECHNICAL MATERIEL CORP. MAMARONECK, NEW YORK | | |
| FINISH | | TITLE MARKING, SHIELDPLATE MARKING PROCESS: AS PER TMC SPEC. 5727 | | |
| UNLESS OTHERWISE SPECIFIED DIMENSIONS ARE IN INCHES AND INCLUDE CHEMICALLY APPLIED OR PLATED FINISHES | | DRAWN <i>WJ</i> | DATE 5/21/63 | FINAL APPROVAL <i>BP</i> |
| | | CHECKED <i>WJ</i> | DATE 5/21/63 | |
| | | ELECT. DES. <i>R KOHN</i> | DATE 9/6/63 | LD-1320 |
| | | MECH. DES. <i>W. JORDAN</i> | DATE 9/6/63 | |
| | | | SHEET | REV. LTR. |

| | | |
|-----------|---------------|------------|
| 1 | TTR-10 | |
| QTY./UNIT | MODEL USED ON | ASS'Y. NO. |
| SCALE | CODE | |
| | A | |

THE CONTENTS OF THIS DRAWING ARE THE EXCLUSIVE PROPERTY OF THE TECHNICAL MATERIEL CORP. ITS UNAUTHORIZED USE OR REPRODUCTION IN WHOLE OR IN PART IS STRICTLY FORBIDDEN.

NOTES