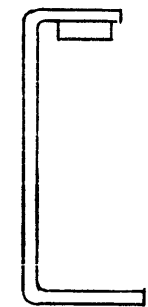
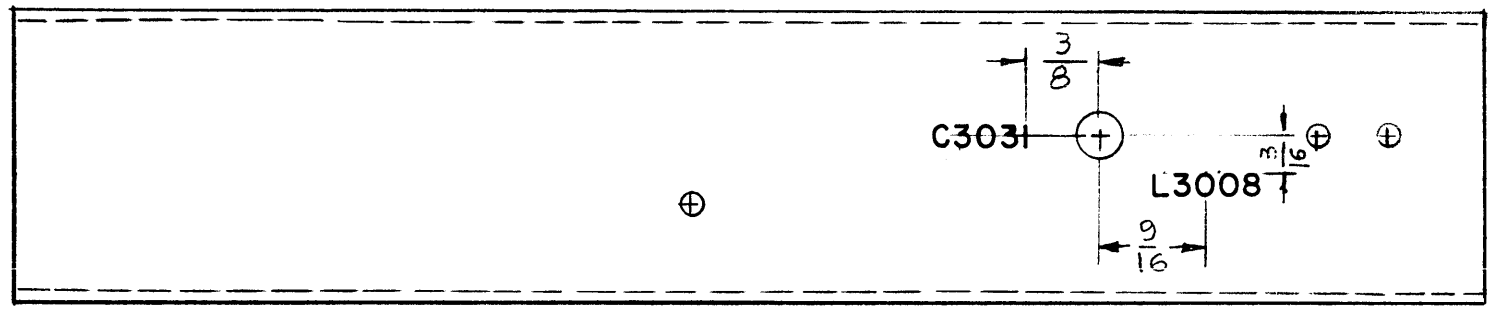


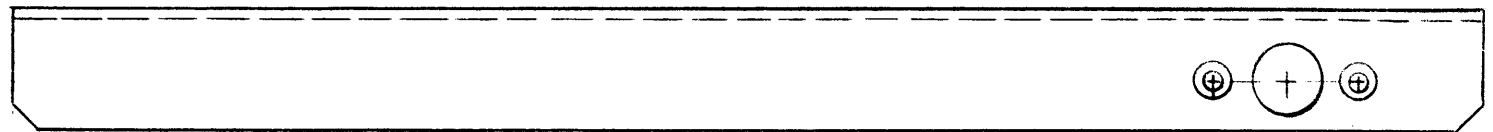
LD-1319

REVISIONS

SYM	DESCRIPTION	DATE	E.M.N. NO.	DRAFT	CHKD	APPD
-----	-------------	------	------------	-------	------	------



MARKING PROCESS: AS PER TMC SPECIFICATION S-727
 LETTERING: 1/8 HIGH BLACK, GOTHIC LOCATED AS SHOWN



REF: MS-3363 (4)

REQ'D.	ITEM	PART NUMBER	DESCRIPTION	SYMBOL
0. POSE LIST OF MATERIAL				
MATERIAL			THE TECHNICAL MATERIEL CORP. MAMARONECK, NEW YORK	
FINISH			TITLE LETTERING, CHASSIS DIVIDER	
UNLESS OTHERWISE SPECIFIED DIMENSIONS ARE IN INCHES AND INCLUDE CHEMICALLY APPLIED OR PLATED FINISHES			DRAWN G.D.L. DATE 5-21-63 CHECKED <i>[Signature]</i> DATE 6-4-63 ELECT. DES. <i>[Signature]</i> DATE MECH. DES. <i>[Signature]</i> DATE	FINAL APPROVAL TFH DATE 6-11-63
DECIMALS .X ± .05 .XX ± .01 .XXX ± .005			FRACTIONS ± 1/64 ANGLES ± 0° 30'	SHEET LD-1319 REV. LTR.

1	LFA-4	
Q'TY./UNIT	MODEL USED ON	ASS'Y. NO.
SCALE 1:1	CODE	
THE CONTENTS OF THIS DRAWING ARE THE EXCLUSIVE PROPERTY OF THE TECHNICAL MATERIEL CORP. ITS UNAUTHORIZED USE OR REPRODUCTION IN WHOLE OR IN PART IS STRICTLY FORBIDDEN.		

NOTES