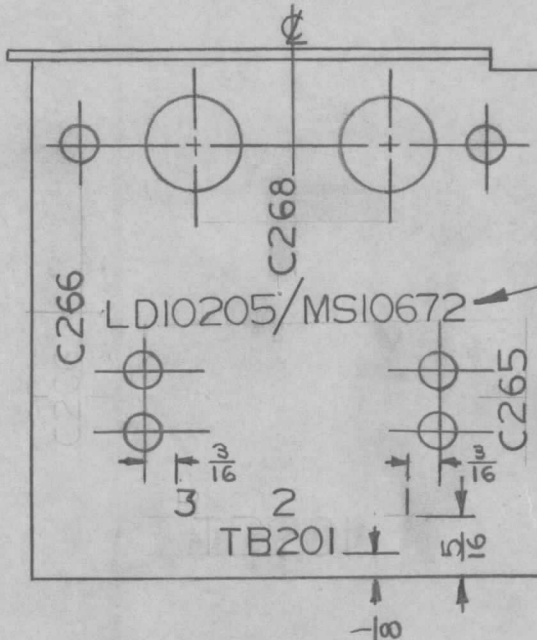


ISSUE	ITEM	CHANGED FROM	DATE	CN. NO.	DRAFTS	CHECKER	ENG. APP.	REQ.	ITEM	PART NO.	DESCRIPTION	SYMBOL
Ø		REL. TO PROD.	Feb. 24/66		GM		(Signature)					

LETTERING: 1/8 HIGH BLACK GOTHIC, LOCATED AS SHOWN.

MARKING PROCESS: AS PER TMC SPECIFICATION S-727.



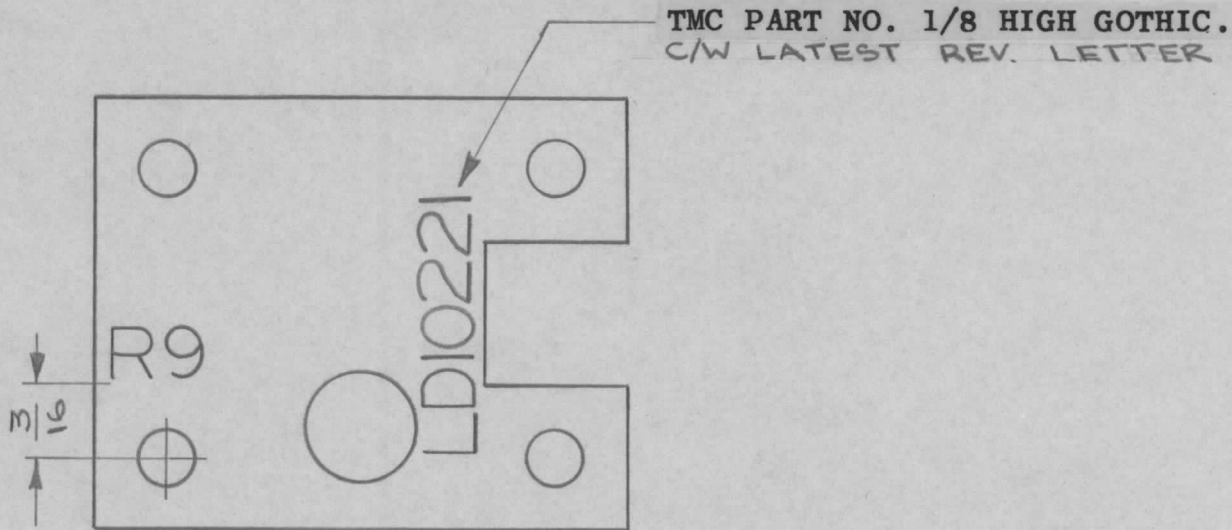
TMC PART. NO COMPLETE WITH LATEST REV. LETTER

REF: MS10672

ARCHARD

RFE-1	028/66		22-2-66			TMC (Canada) LIMITED OTTAWA ONTARIO	
MODEL	PROJECT NO.	ASS'Y. NO.	DATE	STOCK SIZE		LETTERING, TERMINAL	
USED ON				MATERIAL	WEIGHT PER PC.	STRIP BRACKET	
MAXIMUM ALLOWABLE TOLERANCES HAVE BEEN DETERMINED AND DEVIATIONS WILL BE CAUSE FOR REJECTION. REMOVE ALL BURRS AND SHARP EDGES		IF IT IS FOUND DESIRABLE TO CHANGE ANY TOLERANCE OR OTHER DETAIL SPECIFIED ON THIS DRAWING NOTIFY THE PURCHASER PROMPTLY.		TYPE & TEMPER		GAM	(Signature)
TOLERANCES		SCALE		HEAT TREAT. SPEC.		DRAWN	ELEC. DES. APP.
ALL OTHERS	DEC. DIM. ±	DIMENSIONS IN INCHES UNLESS OTHERWISE SPECIFIED		FINISH & SPEC. NO.		CHECKED	MECH. DES. APP.
	FRAC. DIM. ±	DRILL, PUNCH, COMMERCIAL STOCK SIZES AND MANUFACTURERS TOLERANCES ARE NOT INCLUDED.					FINAL APPROVAL
	ANGULAR DIM. ±						LD10205 Ø

ISSUE	ITEM	CHANGED FROM	DATE	CN. NO.	DRAFTS	CHECKER	ENG. APP.	REQ.	ITEM	PART NO.	DESCRIPTION	SYMBOL
Ø		RELEASED FOR PROD.	17-5-66		RPL							
A		REV PER CEMN	10-6-66	CEMN 034	RD							



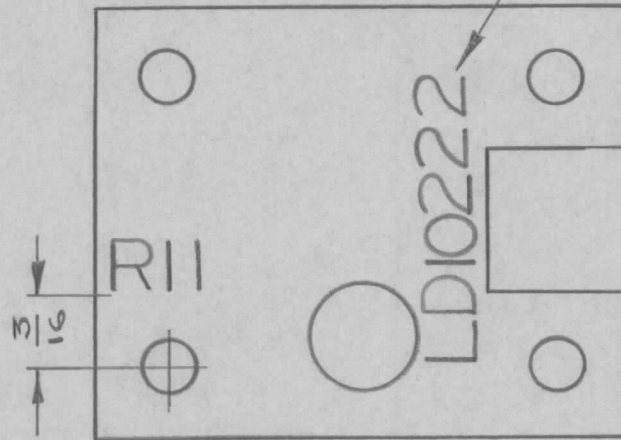
MARKING PROCESS: AS PER TMC SPECIFICATION S-727.
 LETTERING: 1/8 HIGH BLACK GOTHIC, LOCATED AS SHOWN.

REF: MS10609

BAA 4		049/66		A 10481		16-5/66		TMC (Canada) LIMITED OTTAWA ONTARIO						
MODEL		PROJECT NO.		ASS'Y. NO.		DATE						STOCK SIZE		
USED ON								MATERIAL		WEIGHT PER PC.		BRACKET, MOUNTING		
MAXIMUM ALLOWABLE TOLERANCES HAVE BEEN DETERMINED AND DEVIATIONS WILL BE CAUSE FOR REJECTION. REMOVE ALL BURRS AND SHARP EDGES				IF IT IS FOUND DESIRABLE TO CHANGE ANY TOLERANCE OR OTHER DETAIL SPECIFIED ON THIS DRAWING NOTIFY THE PURCHASER PROMPTLY.				TYPE & TEMPER		POTENTIOMETER				
										DRAWN		ELEC. DES. APP.		MECH. DES. APP.
TOLERANCES				SCALE 2:1				HEAT TREAT. SPEC.		CHECKED		FINAL APPROVAL		
ALL OTHERS		DEC. DIM. ±		DIMENSIONS IN INCHES UNLESS OTHERWISE SPECIFIED DRILL, PUNCH, COMMERCIAL STOCK SIZES AND MANUFACTURERS TOLERANCES ARE NOT INCLUDED.				FINISH & SPEC. NO.		 PLUMMER		LD 10221		A
		FRAC. DIM. ±										ANGULAR DIM. ±		

ISSUE	ITEM	CHANGED FROM	DATE	CN. NO.	DRAFTS	CHECKER	ENG. APP.	REQ.	ITEM	PART NO.	DESCRIPTION	SYMBOL
Ø		RELEASED FOR PROD.	17-5-66		RPL							
A		REV PER CEMN	10-6-66	CEMN 034	RD							

TMC PART NO. 1/8 HIGH GOTHIC.
C/W LATEST REV. LETTER



MARKING PROCESS: AS PER TMC SPECIFICATION S-727.

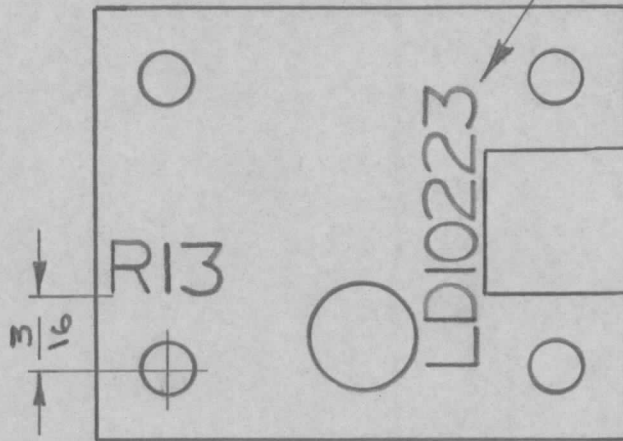
LETTERING: 1/8 HIGH BLACK GOTHIC, LOCATED AS SHOWN.

REF: MS10609

BAA 4		049/66		A 10482		16-5-66				TMC (Canada) LIMITED OTTAWA ONTARIO			
MODEL	PROJECT NO.	ASS'Y. NO.	DATE	STOCK SIZE									BRACKET, MOUNTING
USED ON				MATERIAL		WEIGHT PER PC.				POTENTIOMETER			
MAXIMUM ALLOWABLE TOLERANCES HAVE BEEN DETERMINED AND DEVIATIONS WILL BE CAUSE FOR REJECTION. REMOVE ALL BURRS AND SHARP EDGES				IF IT IS FOUND DESIRABLE TO CHANGE ANY TOLERANCE OR OTHER DETAIL SPECIFIED ON THIS DRAWING NOTIFY THE PURCHASER PROMPTLY.				TYPE & TEMPER		DRAWN		ELEC. DES. APP.	MECH. DES. APP.
TOLERANCES				SCALE 2:1				HEAT TREAT. SPEC.		CHECKED		FINAL APPROVAL	
ALL OTHERS	DEC. DIM. ±	DIMENSIONS IN INCHES UNLESS OTHERWISE SPECIFIED				FINISH & SPEC. NO.		PLUMMER		LD10222		A	
	FRAC. DIM. ±	DRILL, PUNCH, COMMERCIAL STOCK SIZES AND MANUFACTURERS TOLERANCES ARE NOT INCLUDED.											
	ANGULAR DIM. ±												

ISSUE	ITEM	CHANGED FROM	DATE	CN. NO.	DRAFTS	CHECKER	ENG. APP.	REQ.	ITEM	PART NO.	DESCRIPTION	SYMBOL
Ø		RELEASED FOR PROD.	17-5-66		RPL							
A		REV PER CEMN	10-6-66	CEMN 034	RD							

TMC PART NO. 1/8 HIGH GOTHIC.
C/W LATEST REV. LETTER



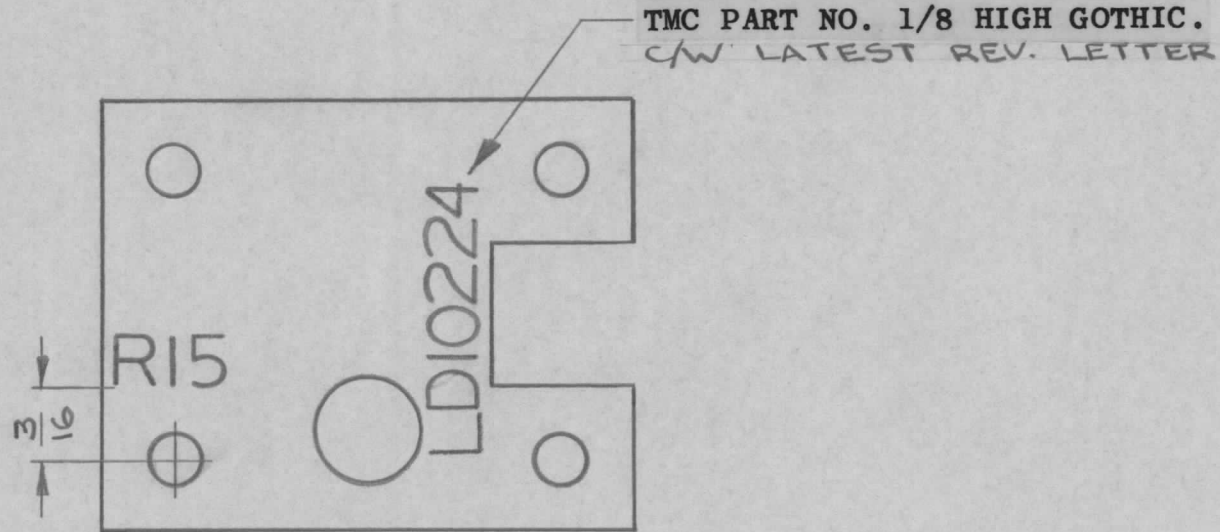
MARKING PROCESS: AS PER TMC SPECIFICATION S-727.

LETTERING: 1/8 HIGH BLACK GOTHIC, LOCATED AS SHOWN.

REF: MS10609

BAA 4		049/66		A10483		17-5-65				TMC (Canada) LIMITED OTTAWA ONTARIO			
MODEL	PROJECT NO.	ASS'Y. NO.	DATE	STOCK SIZE									BRACKET, MOUNTING
USED ON				MATERIAL		WEIGHT PER PC.				POTENTIOMETER			
MAXIMUM ALLOWABLE TOLERANCES HAVE BEEN DETERMINED AND DEVIATIONS WILL BE CAUSE FOR REJECTION. REMOVE ALL BURRS AND SHARP EDGES				IF IT IS FOUND DESIRABLE TO CHANGE ANY TOLERANCE OR OTHER DETAIL SPECIFIED ON THIS DRAWING NOTIFY THE PURCHASER PROMPTLY.				TYPE & TEMPER		RPL			
TOLERANCES				SCALE 2:1		HEAT TREAT. SPEC.				DRAWN		ELEC. DES. APP.	MECH. DES. APP.
ALL OTHERS	DEC. DIM. ±	DIMENSIONS IN INCHES UNLESS OTHERWISE SPECIFIED		FINISH & SPEC. NO.				CHECKED		PLUMMER		FINAL APPROVAL	
	FRAC. DIM. ±	DRILL, PUNCH, COMMERCIAL STOCK SIZES AND MANUFACTURERS TOLERANCES ARE NOT INCLUDED.								LD10223		A	
	ANGULAR DIM. ±												

ISSUE	ITEM	CHANGED FROM	DATE	CN. NO.	DRAFTS	CHECKER	ENG. APP.	REQ.	ITEM	PART NO.	DESCRIPTION	SYMBOL
∅		RELEASED FOR PROD.	17-5-66		RPL							
A		REV PER CEMN	10-6-66	CEMN 034	RD							



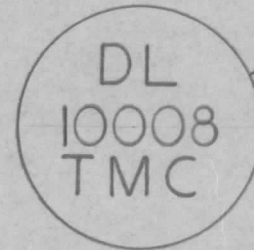
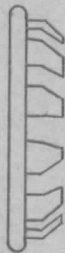
MARKING PROCESS: AS PER TMC SPECIFICATION S-727.

LETTERING: 1/8 HIGH BLACK GOTHIC, LOCATED AS SHOWN.

REF: MS10609

BAA-4		049/66		A10484		17-5-66				TMC (Canada) LIMITED OTTAWA ONTARIO		
MODEL		PROJECT NO.		ASS'Y. NO.		DATE		STOCK SIZE		BRACKET, MOUNTING		
								MATERIAL		WEIGHT PER PC.		POTENTIOMETER
								TYPE & TEMPER		DRAWN		RPL
								HEAT TREAT. SPEC.		ELEC. DES. APP.		
								FINISH & SPEC. NO.		MECH. DES. APP.		
										CHECKED		PLUMMER
										FINAL APPROVAL		LD 10224
ALL OTHERS		DEC. DIM. ±		DIMENSIONS IN INCHES UNLESS OTHERWISE SPECIFIED								A
		FRAC. DIM. ±		DRILL, PUNCH, COMMERCIAL STOCK SIZES AND MANUFACTURERS TOLERANCES ARE NOT INCLUDED.								
		ANGULAR DIM. ±										

ISSUE	ITEM	CHANGED FROM	DATE	CN. NO.	DRAFTS	CHECKER	ENG. APP.	REQ.	ITEM	PART NO.	DESCRIPTION	SYMBOL
φ		REL TO PROD	15-6-66		RD							



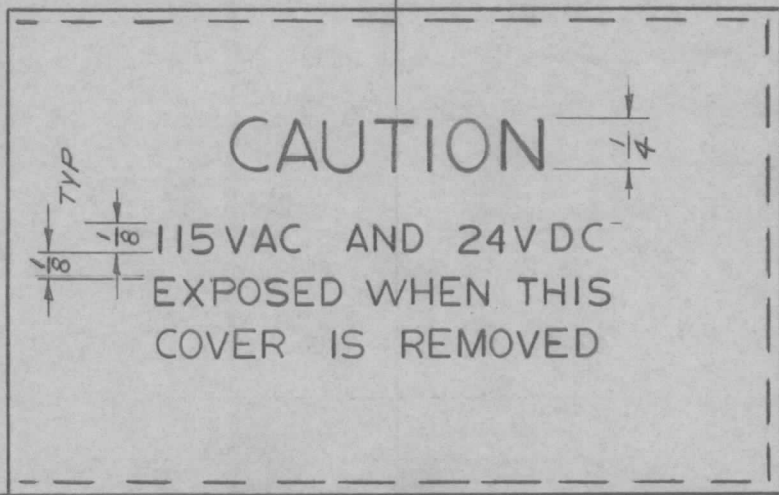
HB 10001

LETTERING: PER S727 BLACK GOTHIC
SIZE TO FIT AS SHOWN

DL 10008		050/66		A10485		15 JUNE 66				TMC (Canada) LIMITED OTTAWA ONTARIO					
MODEL		PROJECT NO.		ASS'Y. NO.		DATE		STOCK SIZE							
USED ON										LETTERING DETAIL					
MAXIMUM ALLOWABLE TOLERANCES HAVE BEEN DETERMINED AND DEVIATIONS WILL BE CAUSE FOR REJECTION. REMOVE ALL BURRS AND SHARP EDGES				IF IT IS FOUND DESIRABLE TO CHANGE ANY TOLERANCE OR OTHER DETAIL SPECIFIED ON THIS DRAWING NOTIFY THE PURCHASER PROMPTLY.				MATERIAL		WEIGHT PER PC.		HB 10001			
								TOLERANCES				SCALE NTS		TYPE & TEMPER	
ALL OTHERS		DEC. DIM. ±		DIMENSIONS IN INCHES UNLESS OTHERWISE SPECIFIED DRILL, PUNCH, COMMERCIAL STOCK SIZES AND MANUFACTURERS TOLERANCES ARE NOT INCLUDED.				HEAT TREAT. SPEC.		DRAWN		ELEC. DES. APP.		MECH. DES. APP.	
		FRAC. DIM. ±						FINISH & SPEC. NO.		CHECKED		AUBREY		FINAL APPROVAL	
		ANGULAR DIM. ±													

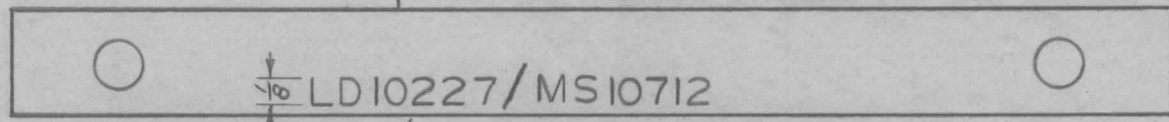
ISSUE	ITEM	CHANGED FROM	DATE	CN. NO.	DRAFTS	CHECKER	ENG. APP.	REQ.	ITEM	PART NO.	DESCRIPTION	SYMBOL
Ø		REL TO PROD	21-6-66		RD		<i>(RD)</i>					

⊕



RED LETTERING

- LETTERING PER S727
- SIZE AND LOCATION AS SHOWN.



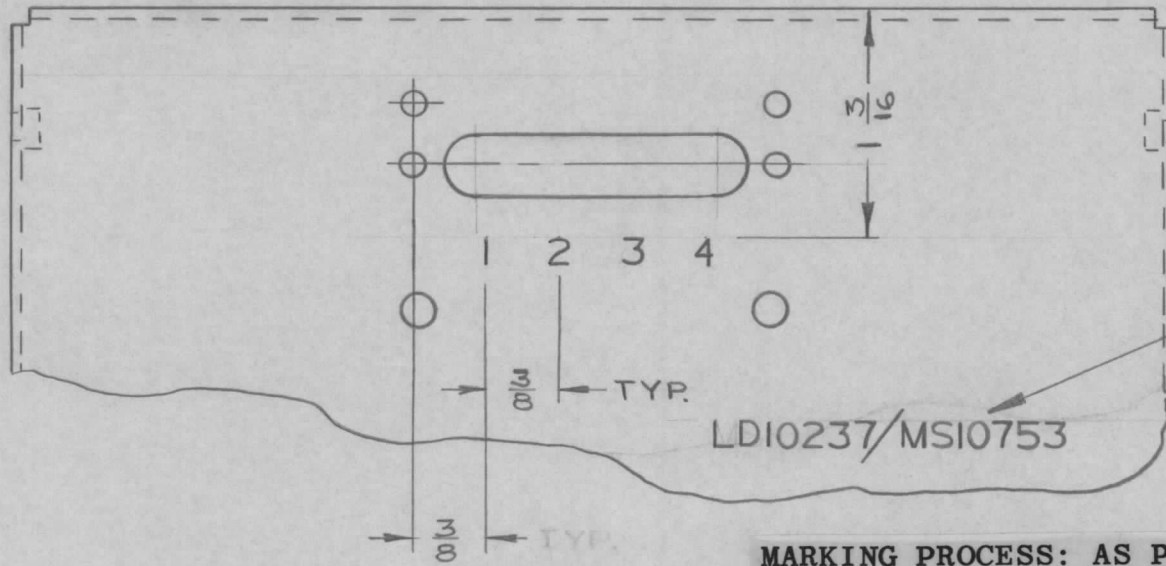
BLACK LETTERING

REF: MS10712

AX10025		050/66		21 JUNE 66				TMC (Canada) LIMITED OTTAWA ONTARIO	
MODEL	PROJECT NO.	ASS'Y. NO.	DATE	STOCK SIZE					
USED ON								LETTERING, COVER	
MAXIMUM ALLOWABLE TOLERANCES HAVE BEEN DETERMINED AND DEVIATIONS WILL BE CAUSE FOR REJECTION. REMOVE ALL BURRS AND SHARP EDGES				IF IT IS FOUND DESIRABLE TO CHANGE ANY TOLERANCE OR OTHER DETAIL SPECIFIED ON THIS DRAWING NOTIFY THE PURCHASER PROMPTLY.		MATERIAL		TERM. PWR SUPPLY	
						WEIGHT PER PC.			
TOLERANCES				SCALE 1:1		TYPE & TEMPER		RD	
ALL OTHERS DEC. DIM. ± FRAC. DIM. ± ANGULAR DIM. ±		DIMENSIONS IN INCHES UNLESS OTHERWISE SPECIFIED DRILL, PUNCH, COMMERCIAL STOCK SIZES AND MANUFACTURERS TOLERANCES ARE NOT INCLUDED.		HEAT TREAT. SPEC.		DRAWN		ELEC. DES. APP.	
						FINISH & SPEC. NO.		MECH. DES. APP.	
						CHECKED		FINAL APPROVAL	
						LANGER		LD10227 Ø	

ISSUE	ITEM	CHANGED FROM	DATE	CN. NO.	DRAFTS	CHECKER	ENG. APP.	REQ.	ITEM	PART NO.	DESCRIPTION	SYMBOL
-------	------	--------------	------	---------	--------	---------	-----------	------	------	----------	-------------	--------

Ø		RELEASED TO PROD	NOV 16/66		RPL		<i>[Signature]</i>					
---	--	------------------	-----------	--	-----	--	--------------------	--	--	--	--	--



TMC PART NO. C/W
LATEST REV. LETTER

LD10237/MS10753

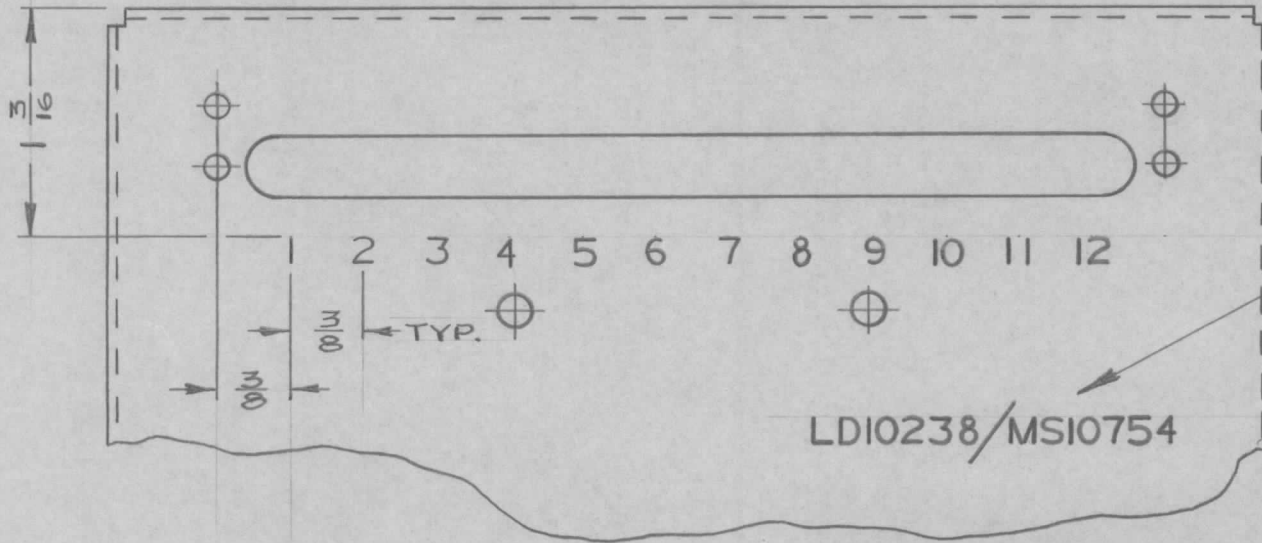
MARKING PROCESS: AS PER TMC SPECIFICATION S-727.

LETTERING: 1/8 HIGH BLACK GOTHIC, LOCATED AS SHOWN.

REF: MS10538

KIT 10014		A10538		NOV 2/66		TMC (Canada) LIMITED OTTAWA ONTARIO		
MODEL	PROJECT NO.	ASS'Y. NO.	DATE	STOCK SIZE				
USED ON				MATERIAL	WEIGHT PER PC.	(LETTERING)		
MAXIMUM ALLOWABLE TOLERANCES HAVE BEEN DETERMINED AND DEVIATIONS WILL BE CAUSE FOR REJECTION. REMOVE ALL BURRS AND SHARP EDGES		IF IT IS FOUND DESIRABLE TO CHANGE ANY TOLERANCE OR OTHER DETAIL SPECIFIED ON THIS DRAWING NOTIFY THE PURCHASER PROMPTLY.		TYPE & TEMPER		CHASSIS MAIN		
						RPL		
TOLERANCES		SCALE 1:1		HEAT TREAT. SPEC.		DRAWN	ELEC. DES. APP.	MECH. DES. APP.
ALL OTHERS	DEC. DIM. ±	DIMENSIONS IN INCHES UNLESS OTHERWISE SPECIFIED				FINISH & SPEC. NO.		<i>[Signature]</i>
	FRAC. DIM. ±	DRILL, PUNCH, COMMERCIAL STOCK SIZES AND MANUFACTURERS TOLERANCES ARE NOT INCLUDED.		LACROIX				
	ANGULAR DIM. ±							

ISSUE	ITEM	CHANGED FROM	DATE	CN. NO.	DRAFTS	CHECKER	ENG. APP.	REQ.	ITEM	PART NO.	DESCRIPTION	SYMBOL
Ø		RELEASED TO PROD.	NOV 16/66		RPL		<i>[Signature]</i>					



TMC PART NO. C/W
LATEST REV. LETTER

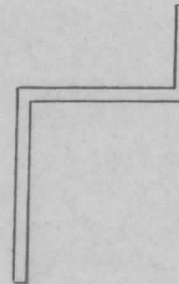
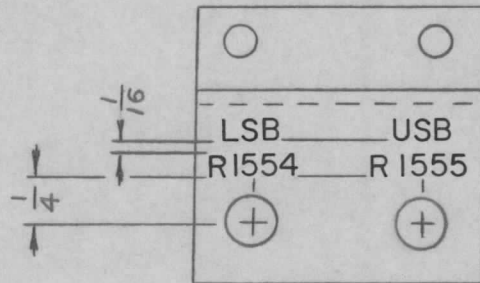
MARKING PROCESS: AS PER TMC SPECIFICATION S-727.

LETTERING: 1/8 HIGH BLACK GOTHIC, LOCATED AS SHOWN.

REF: MS10754

KIT 10015		A10539		NOV 2/66		TMC (Canada) LIMITED OTTAWA ONTARIO	
MODEL	PROJECT NO.	ASS'Y. NO.	DATE	STOCK SIZE			
USED ON				MATERIAL	WEIGHT PER PC.	(LETTERING)	
MAXIMUM ALLOWABLE TOLERANCES HAVE BEEN DETERMINED AND DEVIATIONS WILL BE CAUSE FOR REJECTION. REMOVE ALL BURRS AND SHARP EDGES		IF IT IS FOUND DESIRABLE TO CHANGE ANY TOLERANCE OR OTHER DETAIL SPECIFIED ON THIS DRAWING NOTIFY THE PURCHASER PROMPTLY.		TYPE & TEMPER		CHASSIS, MAIN	
TOLERANCES		SCALE 1:1		HEAT TREAT. SPEC.		DRAWN	ELEC. DES. APP.
ALL OTHERS	DEC. DIM. ±	DIMENSIONS IN INCHES UNLESS OTHERWISE SPECIFIED		FINISH & SPEC. NO.		CHECKED	MECH. DES. APP.
	FRAC. DIM. ±	DRILL, PUNCH, COMMERCIAL STOCK SIZES AND MANUFACTURERS TOLERANCES ARE NOT INCLUDED.				<i>[Signature]</i>	<i>[Signature]</i>
	ANGULAR DIM. ±					LACROIX	FINAL APPROVAL
						LD10238	Ø

ISSUE	ITEM	CHANGED FROM	DATE	CN. NO.	DRAFTS	CHECKER	ENG. APP.	REQ.	ITEM	PART NO.	DESCRIPTION	SYMBOL
Ø		REL TO PROD	27 DEC 66		RA							



LD10241/MS10761

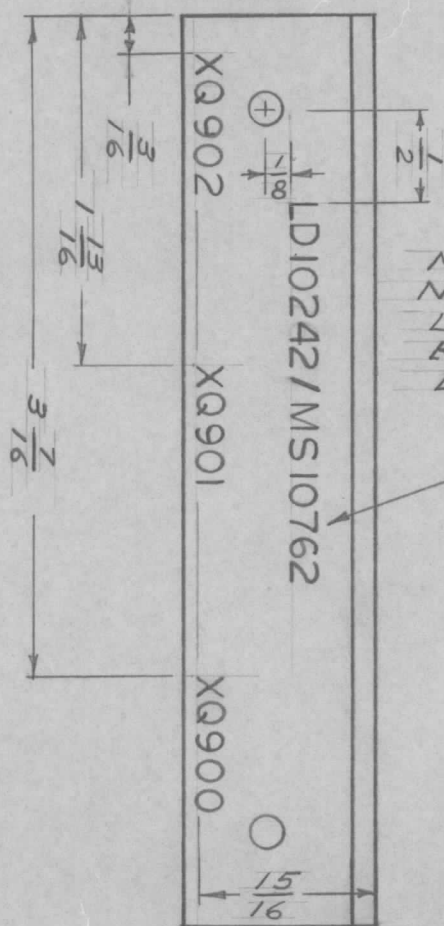
TMC PART NO.
C/W LATEST REV. LETTER

MARKING PROCESS: AS PER TMC SPECIFICATION S-727.
LETTERING: 1/8 HIGH BLACK GOTHIC, LOCATED AS SHOWN.

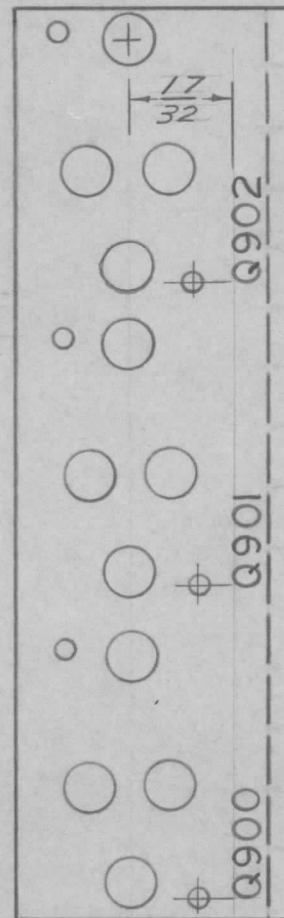
REF: MS10761

STE A-1		005/67		BMA10544		23 DEC 66		TMC (Canada) LIMITED OTTAWA ONTARIO LETTERING, BKT. POT. MTG.					
MODEL		PROJECT NO.		ASS'Y. NO.		DATE						STOCK SIZE	
USED ON								MATERIAL		WEIGHT PER PC.			
MAXIMUM ALLOWABLE TOLERANCES HAVE BEEN DETERMINED AND DEVIATIONS WILL BE CAUSE FOR REJECTION. REMOVE ALL BURRS AND SHARP EDGES				IF IT IS FOUND DESIRABLE TO CHANGE ANY TOLERANCE OR OTHER DETAIL SPECIFIED ON THIS DRAWING NOTIFY THE PURCHASER PROMPTLY.				TYPE & TEMPER					
TOLERANCES				SCALE 1:1				HEAT TREAT. SPEC.					
ALL OTHERS		DEC. DIM. ±		DIMENSIONS IN INCHES UNLESS OTHERWISE SPECIFIED		FINISH & SPEC. NO.		DRAWN		ELEC. DES. APP.		MECH. DES. APP.	
		FRAC. DIM. ±		DRILL, PUNCH, COMMERCIAL STOCK SIZES AND MANUFACTURERS TOLERANCES ARE NOT INCLUDED.				CHECKED		FINAL APPROVAL			
		ANGULAR DIM. ±						 LD10241		 Ø			

ISSUE	ITEM	CHANGED FROM	DATE	CN. NO.	DRAFTS	CHECKER	ENG. APP.	REQ.	ITEM	PART NO.	DESCRIPTION	SYMBOL
Ø		REL TO PROD.	14-12-66		RD							



MARK TMC
NO WITH
LATEST REV.
REVISION
LETTERS



MARKING PROCESS:

AS PER TMC SPECIFICATION S-727.

1/8 HIGH BLACK GOTHIC,
LOCATED AS SHOWN.

REF: MS10762

STEA-1		005/67		BMA 10548-2		14 DEC 66				TMC (Canada) LIMITED OTTAWA ONTARIO			
MODEL		PROJECT NO.		ASS'Y. NO.		DATE		STOCK SIZE					
USED ON								MATERIAL		WEIGHT PER PC.			
MAXIMUM ALLOWABLE TOLERANCES HAVE BEEN DETERMINED AND DEVIATIONS WILL BE CAUSE FOR REJECTION. REMOVE ALL BURRS AND SHARP EDGES				IF IT IS FOUND DESIRABLE TO CHANGE ANY TOLERANCE OR OTHER DETAIL SPECIFIED ON THIS DRAWING NOTIFY THE PURCHASER PROMPTLY.				TYPE & TEMPER		DRAWN		ELEC. DES. APP.	MECH. DES. APP.
TOLERANCES				SCALE 1:1				HEAT TREAT. SPEC.		CHECKED		FINAL APPROVAL	
ALL OTHERS		DEC. DIM. ±		DIMENSIONS IN INCHES UNLESS OTHERWISE SPECIFIED				FINISH & SPEC. NO.		LD10242 Ø			
		FRAC. DIM. ± $\frac{1}{64}$		DRILL, PUNCH, COMMERCIAL STOCK SIZES AND MANUFACTURERS TOLERANCES ARE NOT INCLUDED.									
		ANGULAR DIM. ±											

ISSUE	ITEM	CHANGED FROM	DATE	CN. NO.	DRAFTS	CHECKER	ENG. APP.	REQ.	ITEM	PART NO.	DESCRIPTION	SYMBOL
Ø		REL TO PROD	6-1-67		RD		<i>(Signature)</i>					
<p>TMC PART NO. C/W LATEST REV. LETTER. PER TMC SPEC S 727. ON REAR OF PANEL</p>												
											<p>LD10244 / MS10269 7</p>	
<p>ENGRAVING: 1/8 HIGH GOTHIC PER TMC SPEC S566</p> <p>LINE WIDTH: .020 LINE DEPTH: .000</p>												
<p>FINISH NOTES:</p> <p>S114 - ZINC CHROMATE PRIMER } FRONT AND S115 - SMOOTH GRAY ENAMEL } EDGES ONLY OR PRIME AND PAINT PER CUSTOMER'S SPECIFICATIONS.</p>												
TTRR-(1)C		005/67				5 JAN 67						
MODEL		PROJECT NO.		ASS'Y. NO.		DATE						
USED ON												
<p>MAXIMUM ALLOWABLE TOLERANCES HAVE BEEN DETERMINED AND DEVIATIONS WILL BE CAUSE FOR REJECTION. REMOVE ALL BURRS AND SHARP EDGES</p>					<p>IF IT IS FOUND DESIRABLE TO CHANGE ANY TOLERANCE OR OTHER DETAIL SPECIFIED ON THIS DRAWING NOTIFY THE PURCHASER PROMPTLY.</p>							
TOLERANCES					SCALE 1:1							
ALL OTHERS		DEC. DIM. ±		FRAC. DIM. ±		ANGULAR DIM. ±		DIMENSIONS IN INCHES UNLESS OTHERWISE SPECIFIED				
				± 64				DRILL, PUNCH, COMMERCIAL STOCK SIZES AND MANUFACTURERS TOLERANCES ARE NOT INCLUDED.				
FINISH & SPEC. NO.												

DATE 17 AUG 71.

LD10244	Ø
PART NO.	REV.

THIS DRAWING HAS BEEN YELLOW FLAGGED. CHANGES PROPOSED.

AFFECTS MANUFACTURE

CORRECT TO MS 10769 ON REAR OF PANEL.

DOES NOT AFFECT MANUFACTURE

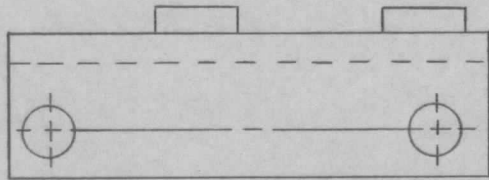
For Material Control use only

STOP PROCUREMENT

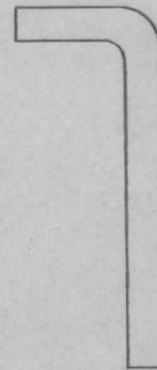
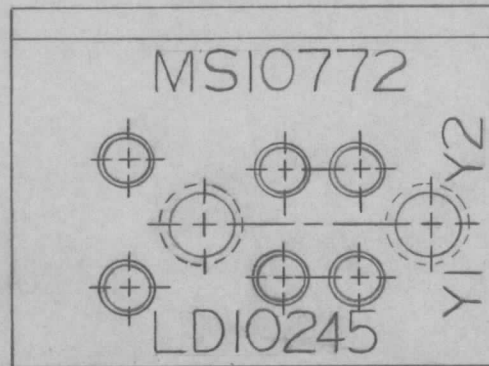
CONTINUE PROCUREMENT

LD10244	Ø
---------	---

ISSUE	ITEM	CHANGED FROM	DATE	CN. NO.	DRAFTS	CHECKER	ENG. APP.	REQ.	ITEM	PART NO.	DESCRIPTION	SYMBOL
φ		REL TO PROD	24 JAN 67		RA		<i>[Signature]</i>					



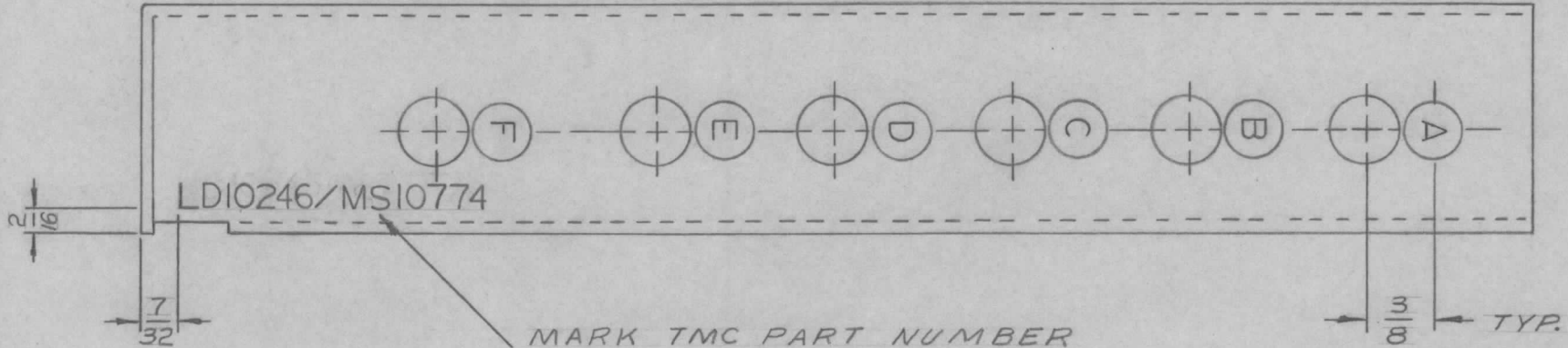
UNLESS OTHERWISE SPECIFIED
 1- ALL LETTERING TO BE 3/32 HIGH
 BLACK GOTHIC. LOCATE APPROX.
 AS SHOWN.
 2- TMC PART NO. MUST CONTAIN
 LATEST REVISION LETTERS



REF: MS10772

TTRR(C)		067/67		24 JAN 67		TMC (Canada) LIMITED OTTAWA ONTARIO	
MODEL	PROJECT NO.	ASS'Y. NO.	DATE	STOCK SIZE			
USED ON				MATERIAL	WEIGHT PER PC.	MARKING, BRACKET, CRYSTAL, SOCKET	
MAXIMUM ALLOWABLE TOLERANCES HAVE BEEN DETERMINED AND DEVIATIONS WILL BE CAUSE FOR REJECTION. REMOVE ALL BURRS AND SHARP EDGES		IF IT IS FOUND DESIRABLE TO CHANGE ANY TOLERANCE OR OTHER DETAIL SPECIFIED ON THIS DRAWING NOTIFY THE PURCHASER PROMPTLY.		TYPE & TEMPER		RA	<i>[Signature]</i>
TOLERANCES		SCALE 2:1		HEAT TREAT. SPEC.		DRAWN	ELEC. DES. APP.
ALL OTHERS	DEC. DIM. ±	DIMENSIONS IN INCHES UNLESS OTHERWISE SPECIFIED		FINISH & SPEC. NO.		CHECKED	FINAL APPROVAL
	FRAC. DIM. ±	DRILL, PUNCH, COMMERCIAL STOCK SIZES AND MANUFACTURERS TOLERANCES ARE NOT INCLUDED.					
	ANGULAR DIM. ±						
						LD10245	φ

ISSUE	ITEM	CHANGED FROM	DATE	CN. NO.	DRAFTS	CHECKER	ENG. APP.	REQ.	ITEM	PART NO.	DESCRIPTION	SYMBOL
φ		REL TO PROD	20JAN67		RA							



MARK TMC PART NUMBER
 C/W LATEST REVISION LETTERS

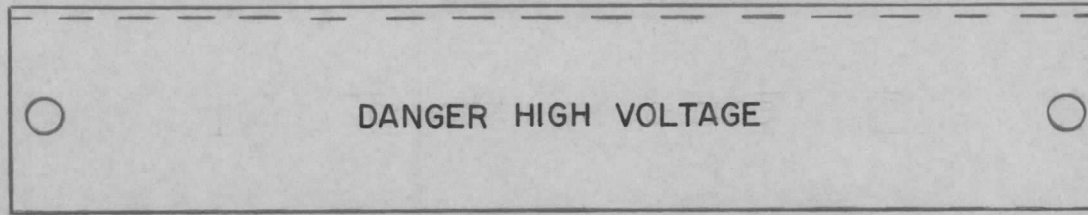
- UNLESS OTHERWISE SPECIFIED
- 1- ALL LETTERING TO BE 1/8 HIGH BLACK GOTHIC MARKING PROCESS AS PER TMC SPEC. 5727
 - 2- CIRCLED TO BE 5/16 DIA. (BLACK)
 - 3- LINE WIDTH TO BE 1/32

REF: MS10774

TTRR()C		067/67		19JAN67		TMC (Canada) LIMITED OTTAWA ONTARIO	
MODEL	PROJECT NO.	ASS'Y. NO.	DATE	STOCK SIZE			
USED ON				MATERIAL	WEIGHT PER PC.	MARKING, WRAPAROUND	
MAXIMUM ALLOWABLE TOLERANCES HAVE BEEN DETERMINED AND DEVIATIONS WILL BE CAUSE FOR REJECTION. REMOVE ALL BURRS AND SHARP EDGES		IF IT IS FOUND DESIRABLE TO CHANGE ANY TOLERANCE OR OTHER DETAIL SPECIFIED ON THIS DRAWING NOTIFY THE PURCHASER PROMPTLY.		TYPE & TEMPER		RA	
TOLERANCES		SCALE 1:1		HEAT TREAT. SPEC.		DRAWN	ELEC. DES. APP.
ALL OTHERS	DEC. DIM. ±	DIMENSIONS IN INCHES UNLESS OTHERWISE SPECIFIED		FINISH & SPEC. NO.		CHECKED	MECH. DES. APP.
	FRAC. DIM. ±	DRILL, PUNCH, COMMERCIAL STOCK SIZES AND MANUFACTURERS TOLERANCES ARE NOT INCLUDED.				FINAL APPROVAL	
	ANGULAR DIM. ±					LD10246 φ	

ISSUE	ITEM	CHANGED FROM	DATE	CN. NO.	DRAFTS	CHECKER	ENG. APP.	REQ.	ITEM	PART NO.	DESCRIPTION	SYMBOL
-------	------	--------------	------	---------	--------	---------	-----------	------	------	----------	-------------	--------

Ø		REL TO PROD	2/9/67		W	W.	W					
---	--	-------------	--------	--	---	----	---	--	--	--	--	--



MARKING PROCESS: AS PER TMC SPECIFICATION S-727.

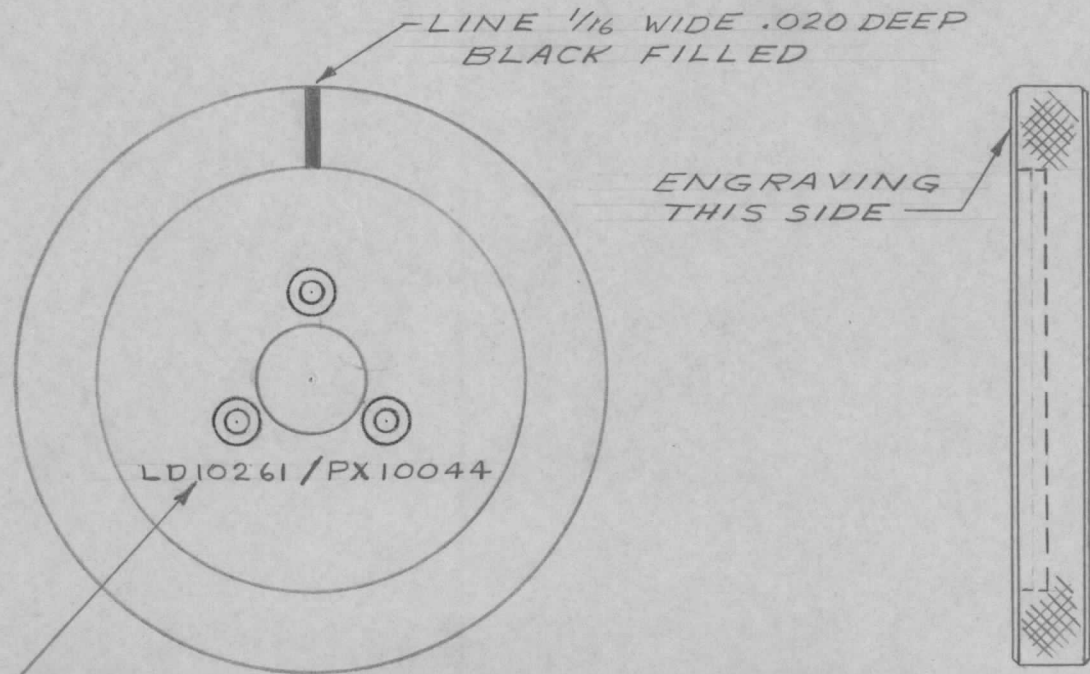
LETTERING: 1/8 HIGH BLACK GOTHIC, LOCATED AS SHOWN.

REF. MS10811

AX10033		053/67		A10607		FEB 16/67				TMC (Canada) LIMITED OTTAWA ONTARIO			
MODEL	PROJECT NO.	ASS'Y. NO.	DATE	STOCK SIZE									
USED ON										LETTERING, GUARD TERM.			
MAXIMUM ALLOWABLE TOLERANCES HAVE BEEN DETERMINED AND DEVIATIONS WILL BE CAUSE FOR REJECTION. REMOVE ALL BURRS AND SHARP EDGES				IF IT IS FOUND DESIRABLE TO CHANGE ANY TOLERANCE OR OTHER DETAIL SPECIFIED ON THIS DRAWING NOTIFY THE PURCHASER PROMPTLY.				MATERIAL		WEIGHT PER PC.		STRIP	
								TYPE & TEMPER		RPL			
TOLERANCES				SCALE 1:1						DRAWN		ELEC. DES. APP.	MECH. DES. APP.
ALL OTHERS DEC. DIM. ± FRAC. DIM. ± ANGULAR DIM. ±				DIMENSIONS IN INCHES UNLESS OTHERWISE SPECIFIED		HEAT TREAT. SPEC.		CHECKED		FINAL APPROVAL			
				DRILL, PUNCH, COMMERCIAL STOCK SIZES AND MANUFACTURERS TOLERANCES ARE NOT INCLUDED.		FINISH & SPEC. NO.						LD10257	

ISSUE	ITEM	CHANGED FROM	DATE	CN. NO.	DRAFTS	CHECKER	ENG. APP.	REQ.	ITEM	PART NO.	DESCRIPTION	SYMBOL
-------	------	--------------	------	---------	--------	---------	-----------	------	------	----------	-------------	--------

Ø
 REL TO PROD 28/9/67
 JW JW [Signature]



PLACE TMC PART NO AS SHOWN
 3/32 HIGH BLACK GOTHIC

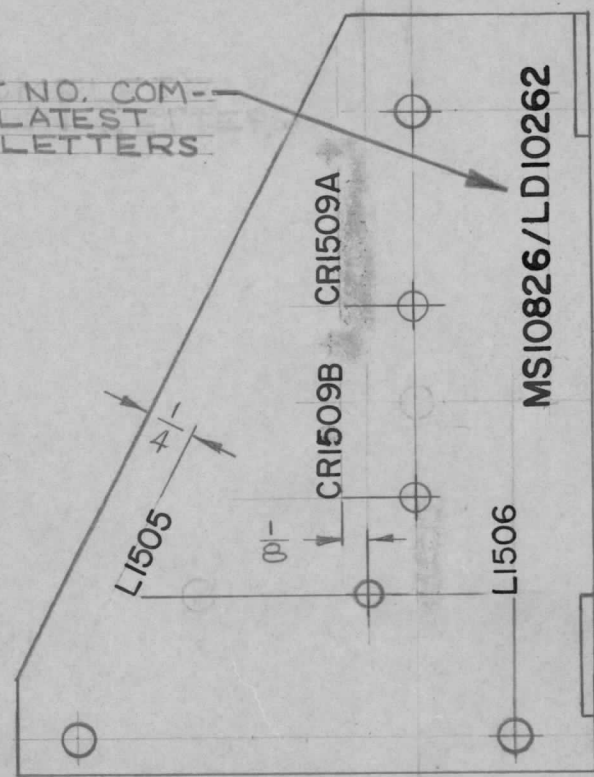
REF: PX10044

AX 10033		053/67		26 APR 67		TMC (Canada) LIMITED OTTAWA ONTARIO ENGRAVING, KNOB	
MODEL	PROJECT NO.	ASS'Y. NO.	DATE	STOCK SIZE			
USED ON				MATERIAL	WEIGHT PER PC.	RD	
MAXIMUM ALLOWABLE TOLERANCES HAVE BEEN DETERMINED AND DEVIATIONS WILL BE CAUSE FOR REJECTION. REMOVE ALL BURRS AND SHARP EDGES		IF IT IS FOUND DESIRABLE TO CHANGE ANY TOLERANCE OR OTHER DETAIL SPECIFIED ON THIS DRAWING NOTIFY THE PURCHASER PROMPTLY.		TYPE & TEMPER		DRAWN	
				HEAT TREAT. SPEC.		ELEC. DES. APP.	
TOLERANCES		SCALE 1:1		FINISH & SPEC. NO.		MECH. DES. APP.	
ALL OTHERS	DEC. DIM. ±	DIMENSIONS IN INCHES UNLESS OTHERWISE SPECIFIED DRILL, PUNCH, COMMERCIAL STOCK SIZES AND MANUFACTURERS TOLERANCES ARE NOT INCLUDED.				CHECKED	
	FRAC. DIM. ±					FINAL APPROVAL	
	ANGULAR DIM. ±					LD10261 Ø	

ISSUE	ITEM	CHANGED FROM	DATE	CN. NO.	DRAFTS	CHECKER	ENG. APP.	REQ.	ITEM	PART NO.	DESCRIPTION	SYMBOL
Ø		RELEASE TO PROD	29/9/67		JW	JW	WAA					
		CR1509A ADDED	1/67									
		CR1509B ADDED										
		TMC PART NO. COMPLETE TO LATEST REVISION LETTERS										

TMC PART NO. COMPLETE TO LATEST REVISION LETTERS

MARKING PROCESS: AS PER TMC SPECIFICATION S-727.
 LETTERING: 1/8 HIGH BLACK GOTHIC, LOCATED AS SHOWN.

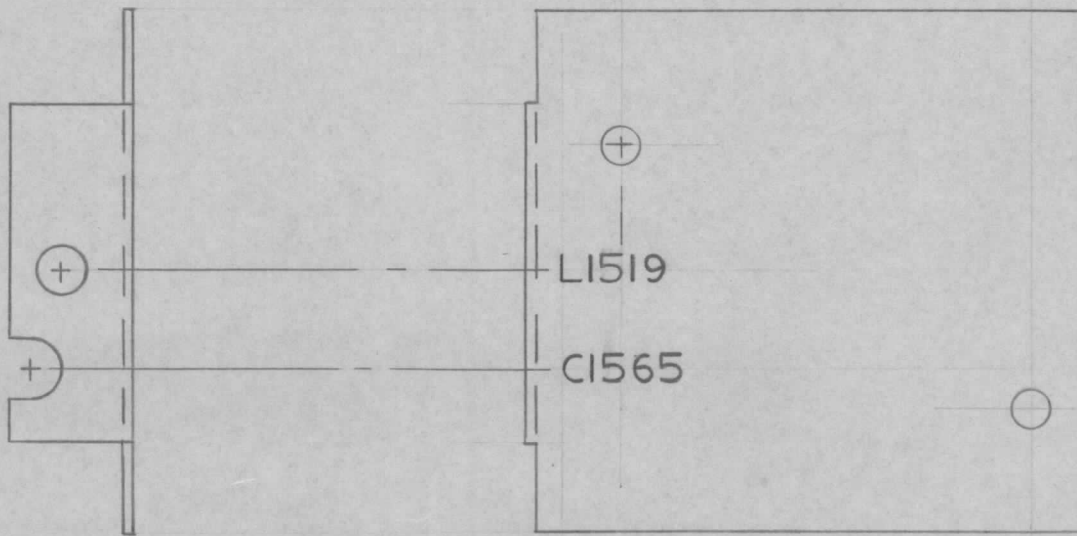


REF. MS10826

AX10033	053/67	A10620	MAR. 4/67			TMC (Canada) LIMITED OTTAWA ONTARIO		
MODEL	PROJECT NO.	ASS'Y. NO.	DATE	STOCK SIZE				
USED ON						LETTERING, BKT. SUPPORT		
MAXIMUM ALLOWABLE TOLERANCES HAVE BEEN DETERMINED AND DEVIATIONS WILL BE CAUSE FOR REJECTION. REMOVE ALL BURRS AND SHARP EDGES		IF IT IS FOUND DESIRABLE TO CHANGE ANY TOLERANCE OR OTHER DETAIL SPECIFIED ON THIS DRAWING NOTIFY THE PURCHASER PROMPTLY.		MATERIAL	WEIGHT PER PC.	LEFT SIDE		
				TYPE & TEMPER		RPL		
TOLERANCES		SCALE 1:1		HEAT TREAT. SPEC.		DRAWN	ELEC. DES. APP.	MECH. DES. APP.
ALL OTHERS	DEC. DIM. ±	DIMENSIONS IN INCHES UNLESS OTHERWISE SPECIFIED DRILL, PUNCH, COMMERCIAL STOCK SIZES AND MANUFACTURERS TOLERANCES ARE NOT INCLUDED.		FINISH & SPEC. NO.		CHECKED WAA		FINAL APPROVAL
	FRAC. DIM. ±			LD10262		Ø		
	ANGULAR DIM. ±							

ISSUE	ITEM	CHANGED FROM	DATE	CN. NO.	DRAFTS	CHECKER	ENG. APP.	REQ.	ITEM	PART NO.	DESCRIPTION	SYMBOL
-------	------	--------------	------	---------	--------	---------	-----------	------	------	----------	-------------	--------

Ø		REL TO PROD	26/1/67		JW	JW	[Signature]					
---	--	-------------	---------	--	----	----	-------------	--	--	--	--	--



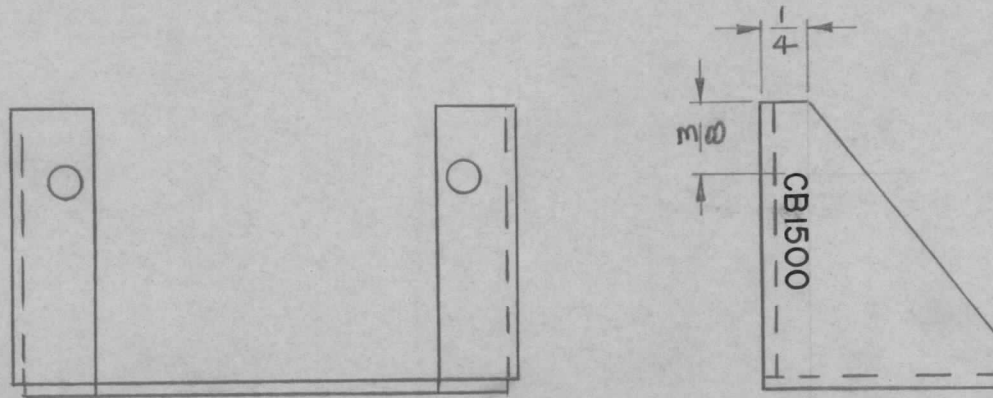
MARKING PROCESS: AS PER TMC SPECIFICATION S-727.

LETTERING: 1/8 HIGH BLACK GOTHIC, LOCATED AS SHOWN.

REF: MS10801

AX10033		053/67		A10619		7 MAR 67				TMC (Canada) LIMITED OTTAWA ONTARIO LETTERING, COVER MTG CKT BD RPL			
MODEL	PROJECT NO.	ASS'Y. NO.	DATE	USED ON		STOCK SIZE		MATERIAL					WEIGHT PER PC.
MAXIMUM ALLOWABLE TOLERANCES HAVE BEEN DETERMINED AND DEVIATIONS WILL BE CAUSE FOR REJECTION. REMOVE ALL BURRS AND SHARP EDGES				IF IT IS FOUND DESIRABLE TO CHANGE ANY TOLERANCE OR OTHER DETAIL SPECIFIED ON THIS DRAWING NOTIFY THE PURCHASER PROMPTLY.				TYPE & TEMPER		DRAWN		ELEC. DES. APP.	MECH. DES. APP.
TOLERANCES				SCALE				HEAT TREAT. SPEC.		CHECKED		FINAL APPROVAL	
ALL OTHERS		DEC. DIM. ±		DIMENSIONS IN INCHES UNLESS OTHERWISE SPECIFIED				FINISH & SPEC. NO.				LD10266 Ø	
		FRAC. DIM. ±		DRILL, PUNCH, COMMERCIAL STOCK SIZES AND MANUFACTURERS TOLERANCES ARE NOT INCLUDED.									
		ANGULAR DIM. ±											

ISSUE	ITEM	CHANGED FROM	DATE	CN. NO.	DRAFTS	CHECKER	ENG. APP.	REQ.	ITEM	PART NO.	DESCRIPTION	SYMBOL
Ø		RELEASED TO PROD	28/4/67		JW	JW.	WJA					



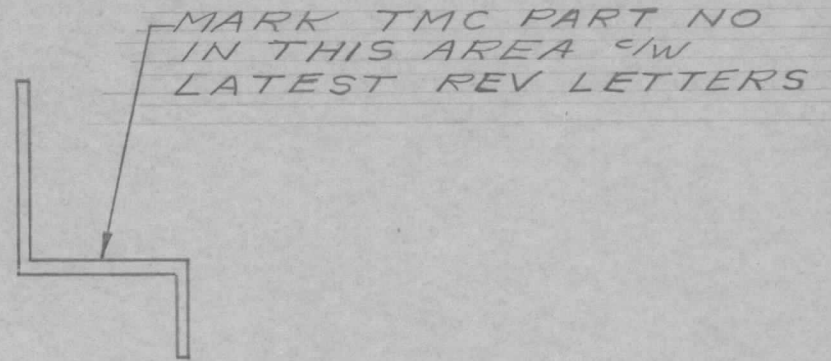
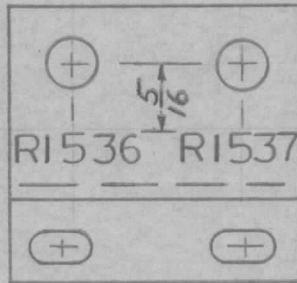
MARKING PROCESS: AS PER TMC SPECIFICATION S-727.

LETTERING: 1/8 HIGH BLACK GOTHIC, LOCATED AS SHOWN.

REF MS10794

AX10033	053/67	A10SB3	MAR 7/67			TMC (Canada) LIMITED OTTAWA ONTARIO	
MODEL	PROJECT NO.	ASS'Y. NO.	DATE	STOCK SIZE		LETTERING, BRK PA OVERLOAD	
USED ON				MATERIAL	WEIGHT PER PC.	SW	
MAXIMUM ALLOWABLE TOLERANCES HAVE BEEN DETERMINED AND DEVIATIONS WILL BE CAUSE FOR REJECTION. REMOVE ALL BURRS AND SHARP EDGES		IF IT IS FOUND DESIRABLE TO CHANGE ANY TOLERANCE OR OTHER DETAIL SPECIFIED ON THIS DRAWING NOTIFY THE PURCHASER PROMPTLY.		TYPE & TEMPER		RPL	
TOLERANCES		SCALE 1:1		HEAT TREAT. SPEC.		DRAWN	ELEC. DES. APP.
ALL OTHERS	DEC. DIM. ±	DIMENSIONS IN INCHES UNLESS OTHERWISE SPECIFIED		FINISH & SPEC. NO.		MECH. DES. APP.	
	FRAC. DIM. ±	DRILL, PUNCH, COMMERCIAL STOCK SIZES AND MANUFACTURERS TOLERANCES ARE NOT INCLUDED.				CHECKED	FINAL APPROVAL
	ANGULAR DIM. ±					LD10267 Ø	

ISSUE	ITEM	CHANGED FROM	DATE	CN. NO.	DRAFTS	CHECKER	ENG. APP.	REQ.	ITEM	PART NO.	DESCRIPTION	SYMBOL
Ø		REL TO PROD	25 SEPT 67		JW	JW	VKA					

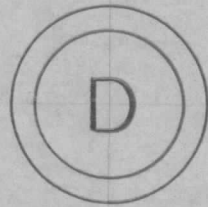


MARKING PROCESS: AS PER TMC SPECIFICATION S-727.
 LETTERING: 1/8 HIGH BLACK GOTHIC, LOCATED AS SHOWN.

REF: MS10835

AX10038		071/67		27 JUNE 67		TMC (Canada) LIMITED OTTAWA ONTARIO	
MODEL	PROJECT NO.	ASS'Y. NO.	DATE	STOCK SIZE			
USED ON				MATERIAL	WEIGHT PER PC.	LETTERING	
MAXIMUM ALLOWABLE TOLERANCES HAVE BEEN DETERMINED AND DEVIATIONS WILL BE CAUSE FOR REJECTION. REMOVE ALL BURRS AND SHARP EDGES		IF IT IS FOUND DESIRABLE TO CHANGE ANY TOLERANCE OR OTHER DETAIL SPECIFIED ON THIS DRAWING NOTIFY THE PURCHASER PROMPTLY.		TYPE & TEMPER		BRKT, POT MTG.	
						RD	
TOLERANCES		SCALE 1:1		HEAT TREAT. SPEC.		DRAWN	ELEC. DES. APP.
ALL OTHERS DEC. DIM. ± FRAC. DIM. ± ANGULAR DIM. ±		DIMENSIONS IN INCHES UNLESS OTHERWISE SPECIFIED DRILL, PUNCH, COMMERCIAL STOCK SIZES AND MANUFACTURERS TOLERANCES ARE NOT INCLUDED.				CHECKED	MECH. DES. APP.
				FINISH & SPEC. NO.		FINAL APPROVAL	
						LD10275 Ø	

ISSUE	ITEM	CHANGED FROM	DATE	CN. NO.	DRAFTS	CHECKER	ENG. APP.	REQ.	ITEM	PART NO.	DESCRIPTION	SYMBOL
Q		REL TO PROD	5/20/67		1	JW	JW					

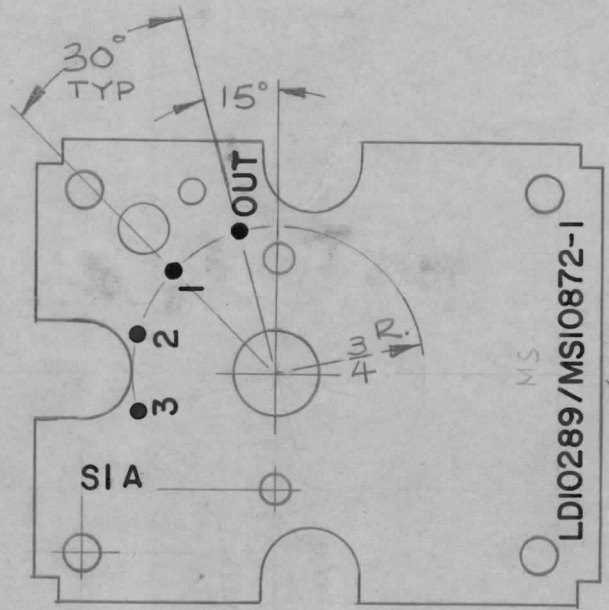


MARKING PROCESS: AS PER TMC SPECIFICATION S-727.
 LETTERING: 1/4 HIGH BLACK GOTHIC, LOCATED AS SHOWN.

REF: MP126-1

TTRT-()D		059/67		JULY 6/67				TMC (Canada) LIMITED OTTAWA ONTARIO			
MODEL	PROJECT NO.	ASS'Y. NO.	DATE	STOCK SIZE							
USED ON				MATERIAL		WEIGHT PER PC.		LETTERING, KNOB UTILITY			
MAXIMUM ALLOWABLE TOLERANCES HAVE BEEN DETERMINED AND DEVIATIONS WILL BE CAUSE FOR REJECTION. REMOVE ALL BURRS AND SHARP EDGES				IF IT IS FOUND DESIRABLE TO CHANGE ANY TOLERANCE OR OTHER DETAIL SPECIFIED ON THIS DRAWING NOTIFY THE PURCHASER PROMPTLY.				TYPE & TEMPER RPL			
TOLERANCES				SCALE NTS.				DRAWN		ELEC. DES. APP.	MECH. DES. APP.
ALL OTHERS DEC. DIM. ± FRAC. DIM. ± ANGULAR DIM. ±				DIMENSIONS IN INCHES UNLESS OTHERWISE SPECIFIED DRILL, PUNCH, COMMERCIAL STOCK SIZES AND MANUFACTURERS TOLERANCES ARE NOT INCLUDED.				CHECKED		FINAL APPROVAL	
				HEAT TREAT. SPEC.							
				FINISH & SPEC. NO.						LD10277	

ISSUE	ITEM	CHANGED FROM	DATE	CN. NO.	DRAFTS	CHECKER	ENG. APP.	REQ.	ITEM	PART NO.	DESCRIPTION	SYMBOL
Ø		REL TO PROD	APRIL 1/68		AP	JW.	JW				MARKING PROCESS: AS PER TMC SPECIFICATION S-727. LETTERING: 1/8 HIGH BLACK GOTHIC, LOCATED AS SHOWN. DOTS 1/16 DIA.	
A		REV TO CEMN	APRIL 15/68	357	AP	JW	JW					
B		REV AS PER CEMN	3 JAN 69	423	AP	JW	JW					

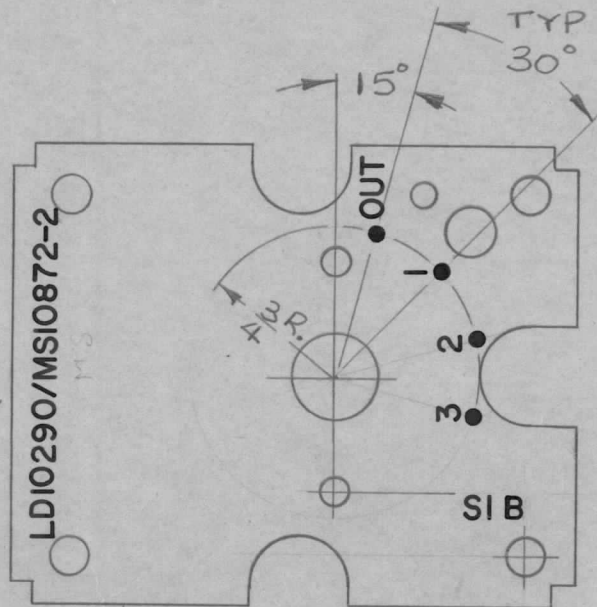


REF. MS10872-1

AX10047		070/68		FEB 21/68				TMC (Canada) LIMITED OTTAWA ONTARIO				
MODEL	PROJECT NO.	ASS'Y. NO.	DATE	STOCK SIZE								
USED ON				MATERIAL		WEIGHT PER PC.		BKT, SWITCH ASS'Y (REAR)				
MAXIMUM ALLOWABLE TOLERANCES HAVE BEEN DETERMINED AND DEVIATIONS WILL BE CAUSE FOR REJECTION. REMOVE ALL BURRS AND SHARP EDGES				IF IT IS FOUND DESIRABLE TO CHANGE ANY TOLERANCE OR OTHER DETAIL SPECIFIED ON THIS DRAWING NOTIFY THE PURCHASER PROMPTLY.				TYPE & TEMPER		RPL	JW	
								DRAWN		ELEC. DES. APP.		MECH. DES. APP.
TOLERANCES				SCALE		HEAT TREAT. SPEC.		CHECKED		FINAL APPROVAL		
ALL OTHERS DEC. DIM. ± FRAC. DIM. ± ANGULAR DIM. ±				DIMENSIONS IN INCHES UNLESS OTHERWISE SPECIFIED				FINISH & SPEC. NO.		LD10289		B
				DRILL, PUNCH, COMMERCIAL STOCK SIZES AND MANUFACTURERS TOLERANCES ARE NOT INCLUDED.								

ISSUE	ITEM	CHANGED FROM	DATE	CN. NO.	DRAFTS	CHECKER	ENG. APP.	REQ.	ITEM	PART NO.	DESCRIPTION	SYMBOL
Ø		REL TO PROD	APR 1/68		AP	<i>W</i>	<i>W</i>				MARKING PROCESS: AS PER TMC SPECIFICATION S-727. LETTERING: 1/8 HIGH BLACK GOTHIC, LOCATED AS SHOWN. DOTS 1/16 DIA.	
A		REV. AS PER CEMN	3 JAN 1969	423	AP	<i>W</i>	<i>W</i>					

TMC PART NO. →



REF. MS10872-2

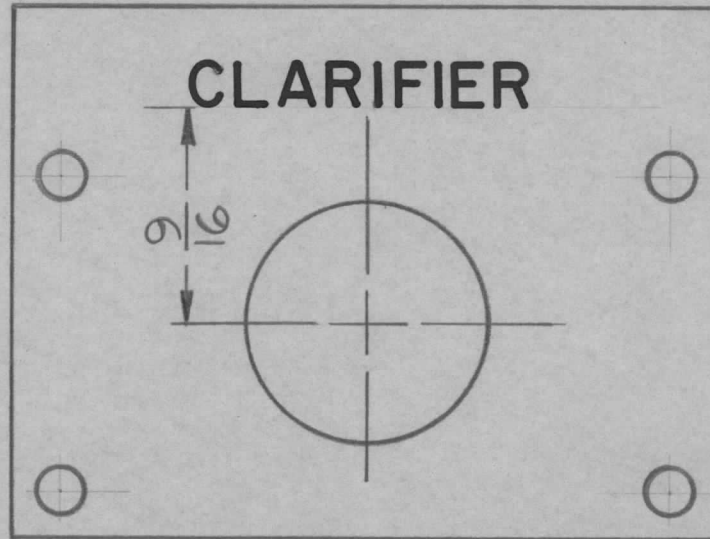
AX10047		070/68		FEB 20/68		TMC (Canada) LIMITED OTTAWA ONTARIO					
MODEL	PROJECT NO.	ASS'Y. NO.	DATE	STOCK SIZE							
USED ON				MATERIAL		WEIGHT PER PC.					
MAXIMUM ALLOWABLE TOLERANCES HAVE BEEN DETERMINED AND DEVIATIONS WILL BE CAUSE FOR REJECTION. REMOVE ALL BURRS AND SHARP EDGES				IF IT IS FOUND DESIRABLE TO CHANGE ANY TOLERANCE OR OTHER DETAIL SPECIFIED ON THIS DRAWING NOTIFY THE PURCHASER PROMPTLY.				BKT, SWITCH ASS'Y (FRONT)			
								TYPE & TEMPER		RPC	
TOLERANCES				SCALE 1:1		DRAWN		ELEC. DES. APP.	MECH. DES. APP.		
ALL OTHERS DEC. DIM. ± FRAC. DIM. ± ANGULAR DIM. ±				DIMENSIONS IN INCHES UNLESS OTHERWISE SPECIFIED DRILL, PUNCH, COMMERCIAL STOCK SIZES AND MANUFACTURERS TOLERANCES ARE NOT INCLUDED.				CHECKED		FINAL APPROVAL	
								HEAT TREAT. SPEC.		LD10290	
				FINISH & SPEC. NO.							

ISSUE	ITEM	CHANGED FROM	DATE	CN. NO.	DRAFTS	CHECKER	ENG. APP.	REQ.	ITEM	PART NO.	DESCRIPTION	SYMBOL
Ø		REL TO PROD	JULY 17/68		AP		<i>W</i>					

NOTE:

ENGRAVING 1/8 HIGH GOTHIC
 DEPTH OF STROKE .020
 WIDTH .020

FINISH AFTER ENGRAVING
 1. S114 ZINC CHROMATE
 PRIMER
 2. S115 SMOOTH GRAY
 ENAMEL



REF:- MS 10917

TTR 20A		053/68		MAY 9/68		TMC (Canada) LIMITED OTTAWA ONTARIO	
MODEL	PROJECT NO.	ASS'Y. NO.	DATE	STOCK SIZE			
USED ON				MATERIAL	WEIGHT PER PC.	PLATE ENGRAVING	
MAXIMUM ALLOWABLE TOLERANCES HAVE BEEN DETERMINED AND DEVIATIONS WILL BE CAUSE FOR REJECTION. REMOVE ALL BURRS AND SHARP EDGES		IF IT IS FOUND DESIRABLE TO CHANGE ANY TOLERANCE OR OTHER DETAIL SPECIFIED ON THIS DRAWING NOTIFY THE PURCHASER PROMPTLY.		TYPE & TEMPER		AP	
				HEAT TREAT. SPEC.		DRAWN	ELEC. DES. APP.
TOLERANCES		SCALE 2:1		FINISH & SPEC. NO.		CHECKED FINAL APPROVAL	
ALL OTHERS	DEC. DIM. ±	DIMENSIONS IN INCHES UNLESS OTHERWISE SPECIFIED				LD10298 Ø	
	FRAC. DIM. ±	DRILL, PUNCH, COMMERCIAL STOCK SIZES AND MANUFACTURERS TOLERANCES ARE NOT INCLUDED.					
	ANGULAR DIM. ±						