

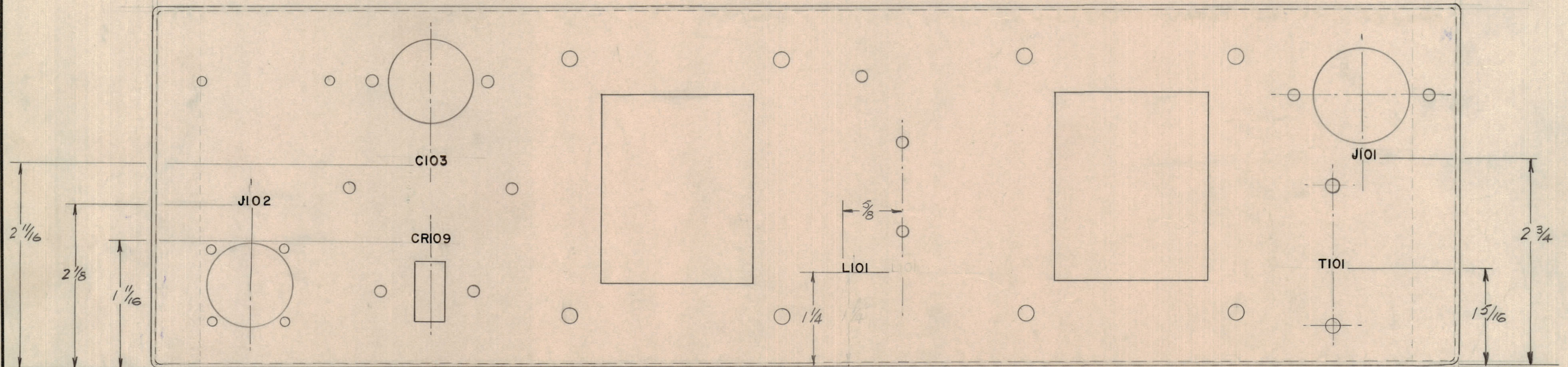
IF IT IS FOUND DESIRABLE TO CHANGE ANY TOLERANCE OR OTHER DETAIL SPECIFIED ON THIS DRAWING NOTIFY THE PURCHASER PROMPTLY.

MAXIMUM ALLOWABLE TOLERANCES HAVE BEEN DETERMINED AND DEVIATIONS WILL BE CAUSE FOR REJECTION. REMOVE ALL BURRS AND SHARP EDGES

NOTICE TO PERSONS RECEIVING THIS DRAWING

THE TECHNICAL MATERIEL CORPORATION claims proprietary right in the material disclosed hereon. This drawing is issued in confidence for engineering information only and may not be reproduced or used to manufacture anything shown hereon without permission from THE TECHNICAL MATERIEL CORPORATION to the user. This drawing is loaned for mutual assistance and is subject to recall at any time.

Property of:
THE TECHNICAL MATERIEL CORPORATION
MAMARONECK, NEW YORK



LD-10129 A

LETTERING TO BE 1/8" HIGH
MARKING PROCESS: AS PER T.M.C SPECIFICATION S-727

ISSUE	ITEM	CHANGED FROM	DATE	CN. NO.	DRAFTS	CHECKER	ENG. APP.
A		REF MS10467 ADDED Dwg MADE SH 1 OF 2	8/14/65	14568		W.V. GIB	MM
TOLERANCES		SCALE:					
ALL OTHERS	DEC. DIM. ± FRAC. DIM. ± ANGULAR DIM. ±	DRILL, PUNCH, COMMERCIAL STOCK SIZES AND MANUFACTURERS TOLERANCES ARE NOT INCLUDED.					

PS-7	CE-5107		7 OCT. 1960
MODEL	PROJECT NO.	ASS'Y. No.	DATE
USED ON			

REF. SMS 10467

REQ.	ITEM	PART No.	DESCRIPTION	SYMBOL
			TMC (Canada) LIMITED	
			OTTAWA ONTARIO	
			STAMPING DETAIL	
			REAR OUTSIDE PS-7	
TYPE & TEMPER		WHDAVISON		
HEAT TREAT. SPEC.		DRAWN: <i>W.D.</i> ELEC. DES. APP. <i>h. Ke...</i> MECH. DES. APP. <i>h. Ke...</i>		
FINISH & SPEC. No.		CHECKED: <i>W.D.</i> FINAL APPROVAL: <i>h. Ke...</i>		
				LD-10129 A

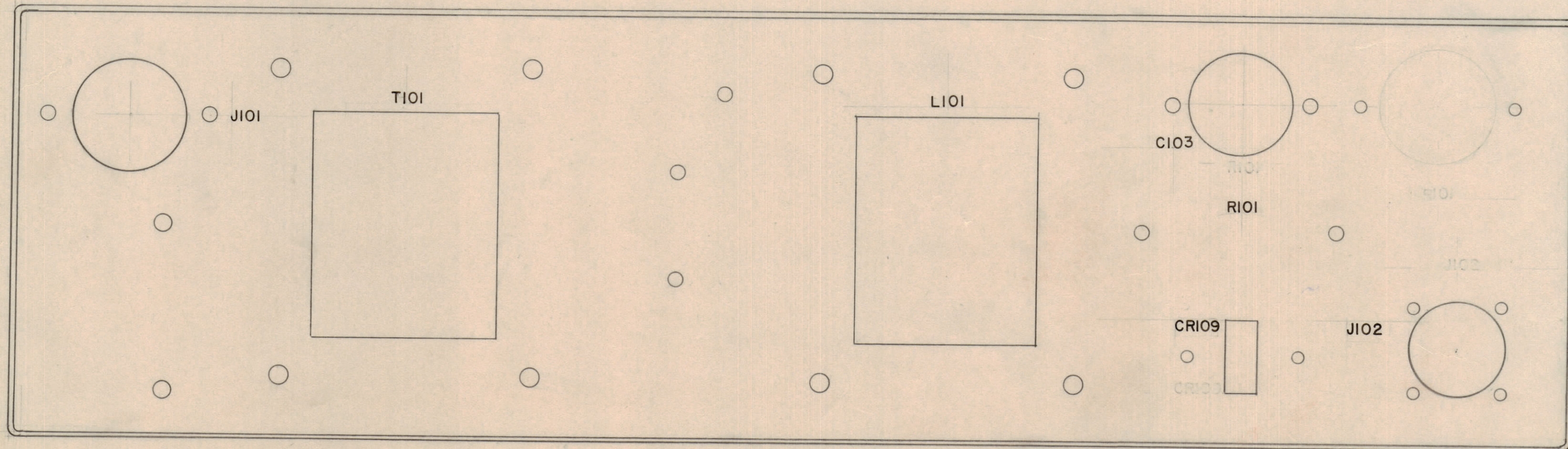
IF IT IS FOUND DESIRABLE TO CHANGE ANY TOLERANCE OR OTHER DETAIL SPECIFIED ON THIS DRAWING NOTIFY THE PURCHASER PROMPTLY.

MAXIMUM ALLOWABLE TOLERANCES HAVE BEEN DETERMINED AND DEVIATIONS WILL BE CAUSE FOR REJECTION. REMOVE ALL BURRS AND SHARP EDGES

NOTICE TO PERSONS RECEIVING THIS DRAWING

THE TECHNICAL MATERIEL CORPORATION claims proprietary right in the material disclosed herein. This drawing is issued in confidence for engineering information only and may not be reproduced or used to manufacture anything shown herein without permission from THE TECHNICAL MATERIEL CORPORATION to the user. This drawing is loaned for mutual assistance and is subject to recall at any time.

Property of:
THE TECHNICAL MATERIEL CORPORATION
MAMARONECK, NEW YORK



LD-10129 A

LETTERING TO BE 1/8" HIGH

MARKING PROCESS: AS PER TMC SPECIFICATION S-727

ISSUE	ITEM	CHANGED FROM	DATE	CN. NO.	DRAFTS	CHECKER	ENG. APP.
A		LD10129 (2 OF 2) WAS LD10132	8/10/65	14568	H.X.C.	J.C.S.	N.M.M.
TOLERANCES		SCALE: 1:1					
ALL OTHERS	DEC. DIM. ± FRAC. DIM. ± ANGULAR DIM. ±	DRILL, PUNCH, COMMERCIAL STOCK SIZES AND MANUFACTURERS TOLERANCES ARE NOT INCLUDED.					

PS-7	CE-5107		11 OCTOBER 1960
MODEL	PROJECT No.	ASS'Y. No.	DATE
USED ON			

REF. B MS 10467

REQ.	ITEM	PART No.	DESCRIPTION	SYMBOL
			TMC (Canada) LIMITED OTTAWA ONTARIO	
STOCK SIZE			STAMPING DETAILS - CHASSIS	
MATERIAL			FRONT REAR - INSIDE	
WEIGHT PER PC.			W.H. DAVISON	
TYPE & TEMPER			DRAWN	M.E.C.
HEAT TREAT. SPEC.			ELEC. DES. APP.	MECH. DES. APP.
FINISH & SPEC. No.			CHECKED	FINAL APPROVAL
			LD-10129 A	