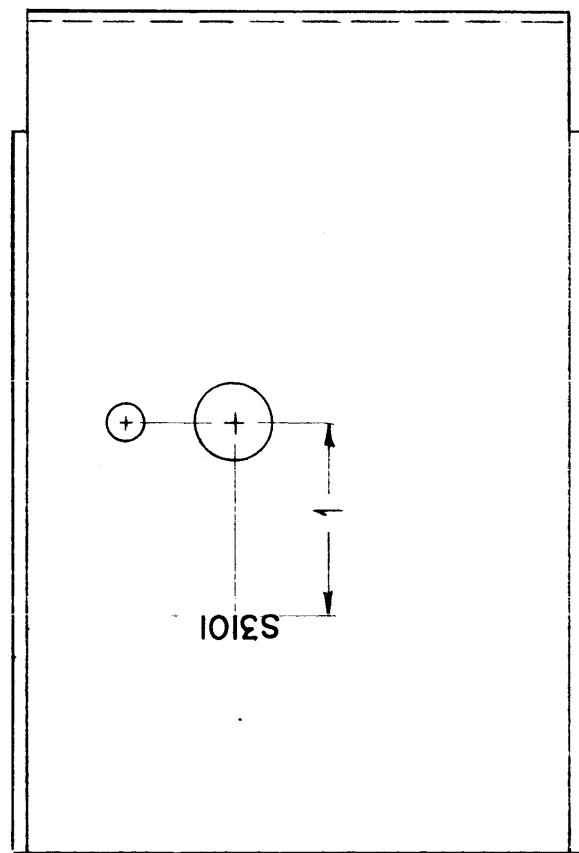
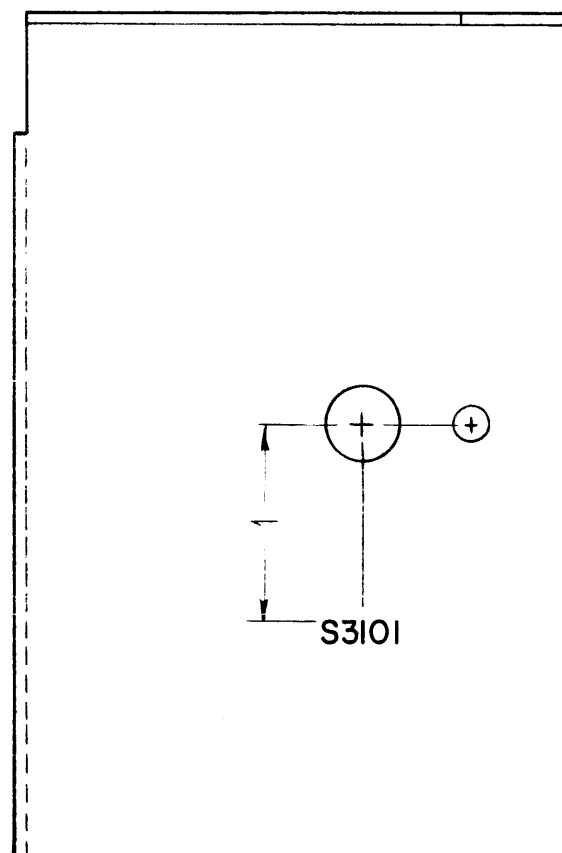
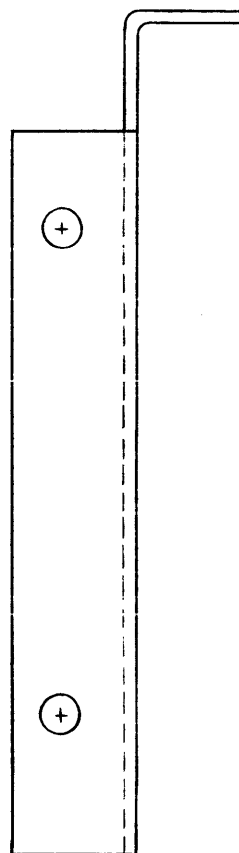


LD-1085

THE CONTENTS OF THIS DRAWING ARE THE EXCLUSIVE PROPERTY OF THE TECHNICAL MATERIEL CORP. ITS UNAUTHORIZED USE OR REPRODUCTION IN WHOLE OR IN PART IS STRICTLY FORBIDDEN.



REAR VIEW



FRONT VIEW

— UNLESS OTHERWISE SPECIFIED —  
 1/8 HIGH BLACK LUSTERLESS, GOTHIC LETTERING.  
 MARKING PROCESS: AS PER TMC SPECIFICATION S-727  
 ALL LETTERING TO BE CENTERED ON HOLES.

REF: MS-2883 (2)

SYM	DESCRIPTION	DATE	CH. NO.	DRAFTS	CHECKER	ENG. APP.
UNLESS OTHERWISE SPECIFIED:		SCALE:				
DIMENSIONS ARE IN INCHES		MAXIMUM ALLOWABLE TOLERANCES HAVE BEEN DETERMINED AND ANY DEVIATIONS WILL BE CAUSE FOR REJECTION.				
TOLERANCES ON		REMOVE ALL BURRS AND SHARP EDGES				
FRACTIONS ± 1/64		DECIMALS ± .005		ANGLES ± 1/2°		

4	HFS-1	SYNTH.			8-17-62
REQ. PER UNIT	MODEL	SECTION	ASS'Y. NO.	DATE	
USED ON					

REQ.	ITEM	PART NO.	J. STRUMMER DESCRIPTION	SYMBOL
			THE TECHNICAL MATERIEL CORP. MAMARONECK, NEW YORK	
			LETTERING, SWITCH MTG. PLATE (3100 DECK)	
			G.D.L. <i>[Signature]</i>	
			DRAWN <i>[Signature]</i> CHECKED <i>[Signature]</i> FINAL APPROVAL <i>[Signature]</i>	
			ELEC. DES. APP. <i>[Signature]</i> MECH. DES. APP. <i>[Signature]</i>	LD-1085