

THE CONTENTS OF THIS DRAWING ARE THE EXCLUSIVE PROPERTY OF THE TECHNICAL MATERIEL CORP. ITS UNAUTHORIZED USE OR REPRODUCTION IN WHOLE OR IN PART IS STRICTLY FORBIDDEN.

REQ. PER UNIT

1

MODEL

HFS-1

USED ON

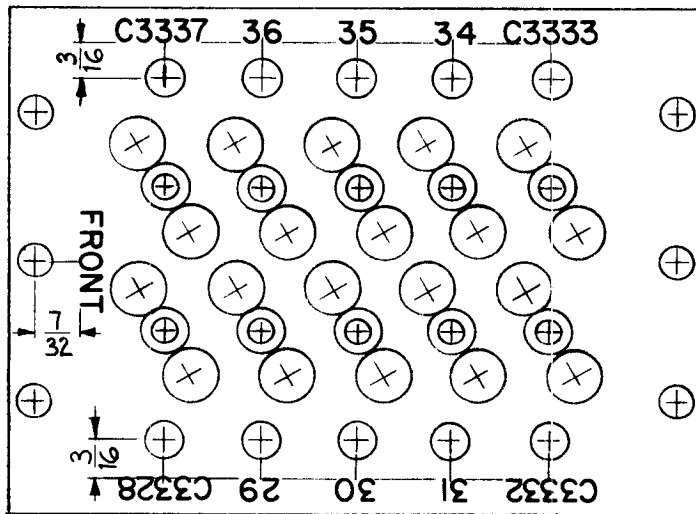
ASS'Y. NO.

3300

DATE

8-15-62

LD-1080



UNLESS OTHERWISE SPECIFIED~

1- 1/8 HIGH BLACK LUSTERLESS, GOTHIC LETTERING.

MARKING PROCESS: AS PER TMC SPECIFICATION S-727

2- ALL LETTERING TO BE CENTERED ON HOLES.

NOTICE TO CUSTOMERS REGARDING THIS DRAWING

THIS DRAWING IS THE PROPERTY OF THE TECHNICAL MATERIEL CORP. IT IS LOANED TO YOU FOR YOUR INFORMATION ONLY. IT IS NOT TO BE REPRODUCED OR COPIED IN ANY MANNER WITHOUT THE WRITTEN PERMISSION OF THE TECHNICAL MATERIEL CORP. ANY INFORMATION CONTAINED HEREIN IS UNCLASSIFIED EXCEPT WHERE SHOWN OTHERWISE.

Property of

THE TECHNICAL MATERIEL CORPORATION
MAMARONECK, NEW YORK

REF: PX-658 (1)

REQ.	ITEM	PART NO.	J. STRUMMER DESCRIPTION			SYMBOL
			THE TECHNICAL MATERIEL CORP.			
			MAMARONECK, NEW YORK			
			LETTERING, CRYSTALS, MTG. BOARD			
			3300 DECK			
SYM	DESCRIPTION	DATE	CH. NO.	DRAFTS	CHECKER	ENG. APP.
UNLESS OTHERWISE SPECIFIED: DIMENSIONS ARE IN INCHES TOLERANCES ON FRAC. ± 1/64 DEC. ± .005 ANGLES ± 1/2°		SCALE: MAXIMUM ALLOWABLE TOLERANCES HAVE BEEN DETERMINED AND ANY DEVIATIONS WILL BE CAUSE FOR REJECTION. REMOVE ALL BURRS AND SHARP EDGES				
					W.A.F.	J.W.C.
					DRAWN	CHECKED
					J.M.A.	J.M.A.
					FINISH & SPEC. NO.	LD-1080
					ELC. DES. APP.	MCH. DES. APP.