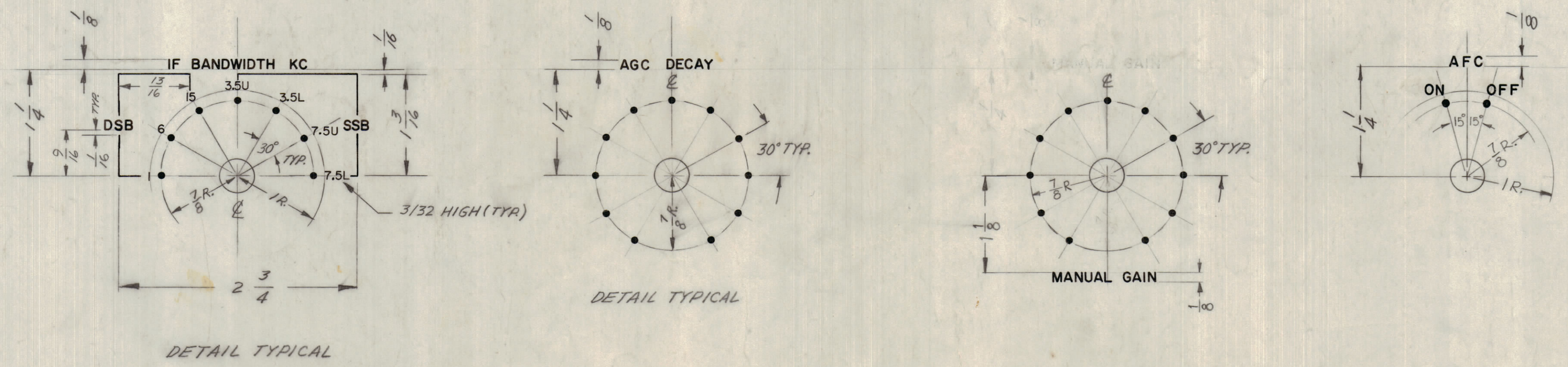


UNLESS OTHERWISE SPECIFIED
 1. ALL ENGRAVING TO BE 3/32 WHITE FILLED GOTHIC.
 2. ALL DOTS TO BE WHITE FILLED.
 3. ALL LINES TO BE WHITE FILLED.
 4. ALL LETTERING GROUPS TO BE CENTERED ON HOLES OR INDICATING LINES

LETTER HEIGHT	DEPTH OF STROKE	WIDTH OF STROKE
3/32	.010	.015
1/8	.010	.020
3/16	.010	.025
DOTS	.010	1/16
LINES	.010	.015



NOTICE TO PERSONS RECEIVING THIS DRAWING
 THE TECHNICAL MATERIEL CORPORATION claims proprietary right in the material disclosed herein. This drawing is issued in confidence for engineering information only and may not be reproduced or used to manufacture anything shown herein without permission from THE TECHNICAL MATERIEL CORPORATION to the user. This drawing is loaned for mutual assistance and is subject to recall at any time.
 Property of:
 THE TECHNICAL MATERIEL CORPORATION
 MAMARONECK, NEW YORK

REF: MS-2695(8)

SYM	ZONE	DESCRIPTION	DATE	CH. NO.	DRAFTS	CHECKER	ENG. APP.
A	F5	DIM ON "CHANNEL B" WAS 3	3-13-63	BAG1	TC	WJ	[Signature]

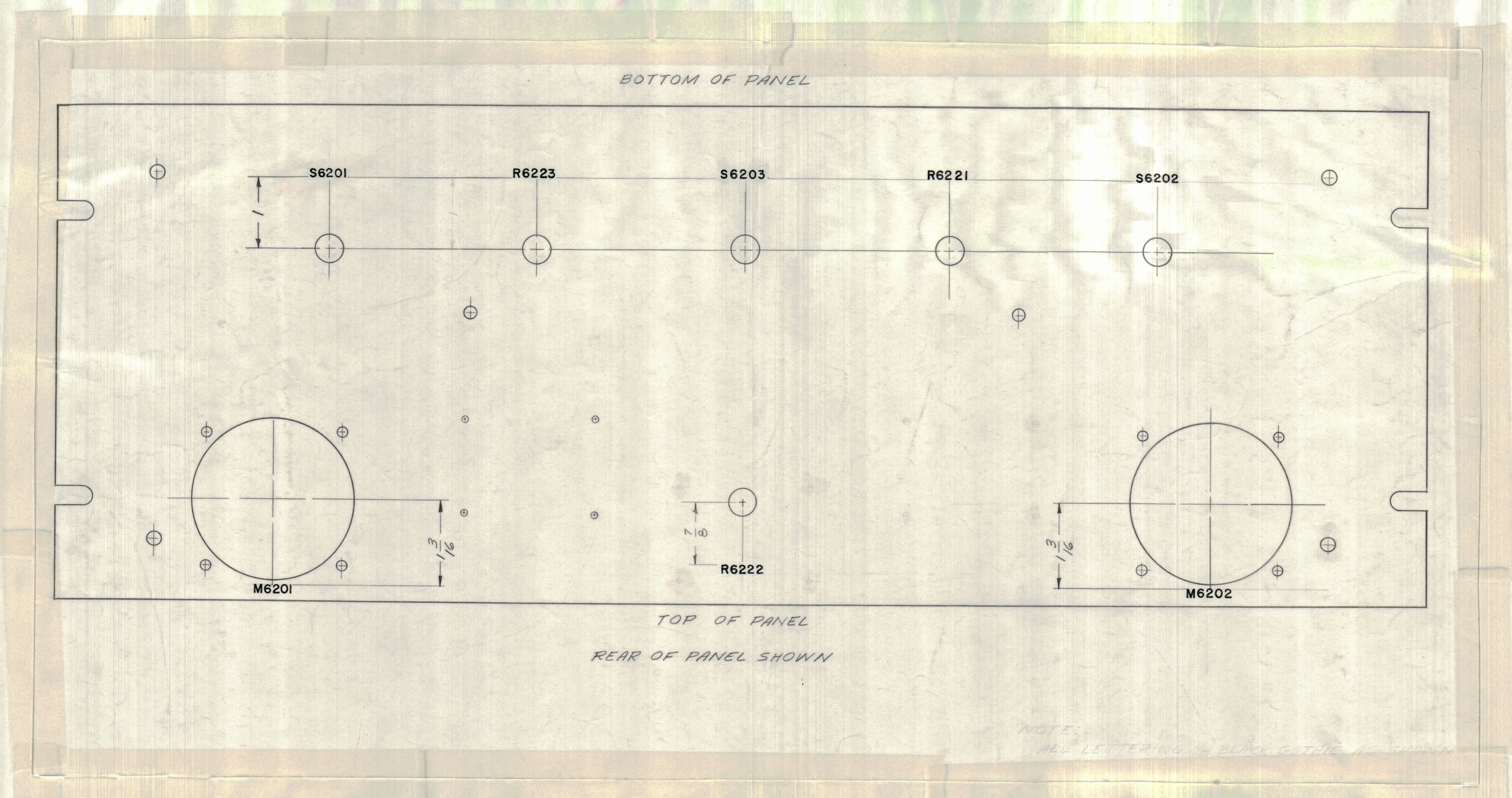
UNLESS OTHERWISE SPECIFIED:
 DIMENSIONS ARE IN INCHES
 TOLERANCES ON FRACTIONS ± 1/64 DECIMALS ± .005 ANGLES ± 1/2°

SCALE: MAXIMUM ALLOWABLE TOLERANCES HAVE BEEN DETERMINED AND ANY DEVIATIONS WILL BE CAUSE FOR REJECTION. REMOVE ALL BURRS & SHARP EDGES

REQ. PER UNIT	MODEL	SECTION	ASS'Y. NO.	DATE
1	HFI-1			10-10-61

REQ. ITEM	PART NO.	M. GELLMAN	DESCRIPTION	SYMBOL
			THE TECHNICAL MATERIEL CORP. MAMARONECK, NEW YORK	
			ENGRAVING, FRONT PANEL	
			WA RUZZO [Signature]	
			LD-1045	A

ELEC. DES. APP. MECH. DES. APP. SHEET 1 OF 2



NOTE:
ALL LETTERING 1/8 BLACK GOTHIC 14 POINT
UNLESS OTHERWISE SPECIFIED,
1. ALL LETTERING TO BE 1/8 HIGH BLACK GOTHIC, MARKING PROCESS: AS PER TMC SPECIFICATION S-723
2. ALL LETTER GROUPS TO BE CENTERED ON HOLES OR INDICATING LINES.

NOTICE TO PERSONS RECEIVING THIS DRAWING
THE TECHNICAL MATERIEL CORPORATION claims proprietary right in the material disclosed hereon. This drawing is issued in confidence for engineering information only and may not be reproduced or used to manufacture anything shown hereon without permission from THE TECHNICAL MATERIEL CORPORATION to the user. This drawing is loaned for mutual assistance and is subject to recall at any time.
Property of:
THE TECHNICAL MATERIEL CORPORATION
MAMARONECK, NEW YORK

REF: MS-2695 (8).

SYM	ZONE	DESCRIPTION	DATE	CH. NO.	DRAFTS	CHECKER	ENG. APP.
A	-	SEE SHEET 1 OF 2, REV 'A'	3-13-63	8961	RC	WJ	WJ
UNLESS OTHERWISE SPECIFIED:			SCALE DO NOT SCALE				
DIMENSIONS ARE IN INCHES			MAXIMUM ALLOWABLE TOLERANCES HAVE BEEN DETERMINED AND ANY DEVIATIONS WILL BE CAUSE FOR REJECTION. REMOVE ALL BURRS & SHARP EDGES				
TOLERANCES ON FRACTIONS ± 1/64			DECIMALS ± .005			ANGLES ± 1/2°	

REQ. PER UNIT	MODEL	SECTION	ASS'Y. NO.	DATE
1	HFI-1			1-3-62

REQ. ITEM	PART NO.	DESCRIPTION	SYMBOL
		M. GELLMAN	
		THE TECHNICAL MATERIEL CORP. MAMARONECK, NEW YORK	
		LETTERING, FRONT PANEL REAR	
		MATERIAL	
		W.S. RUZZO	STP
		DRAWN	CHECKED
		TYPE & TEMPER	HEAT TREAT. SPEC.
		LD-1045	A
		FINISH & SPEC. NO.	ELEC. DES. APP. MECH. DES. APP.
			SHEET 2 OF 2

LD-1045 A