

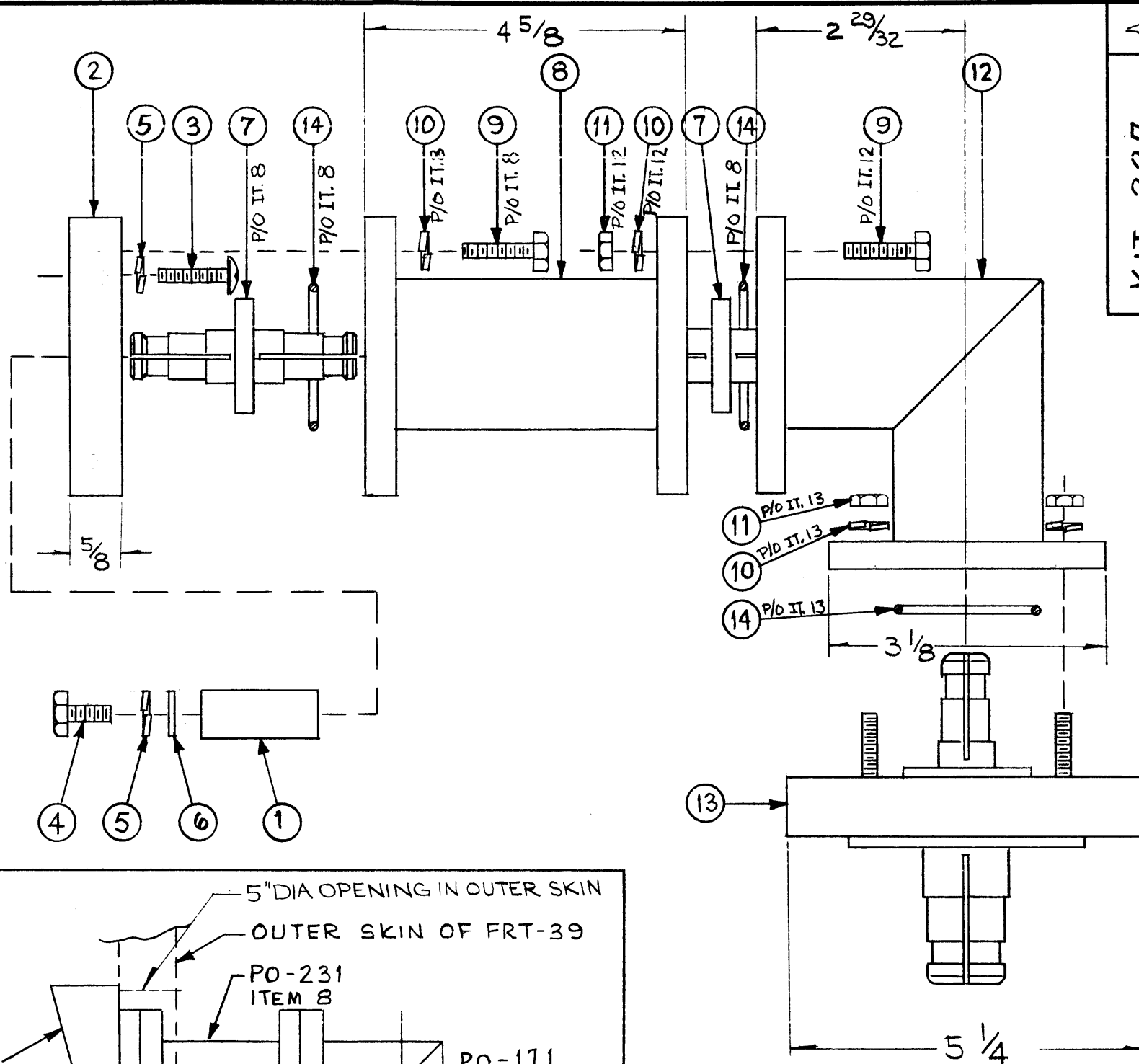
A
KIT-227

REVISIONS

SYM	DESCRIPTION	DATE	E.M.N. NO.	DRAFT	CHKD	APPD
A	ON IT. 7, 8, 9, 10, 11 & 14: "P/O xxx" NOTE ADDED.	4-2-65	13815	PT	<i>[Signature]</i>	<i>[Signature]</i>

ORDERING INFORMATION:

PART NO.	REMARKS
KIT-227-1	AS SHOWN
KIT-227-2	LESS ITEM 12 AND HARDWARE
KIT-227-3	LESS ITEM 12, 13 AND HARDWARE



REQ'D.	ITEM	PART NUMBER	DESCRIPTION	SYMBOL
3	14	GA-158-2	GASKET, "O" RING	
1	13	PO-222-50	ADAPTER, 3/8 TO 1 5/8 EIA	
1	12	PO-171-50	ANGLE, RIGHT, 1 5/8 EIA	
8	11	NTH3118BN16	NUT, HEX	
12	10	LWS 31 MRN	WASHER, LOCK, SPLIT	
8	9	SCHH3118BN16	SCREW, MACHINE, HEX HD	
1	8	PO-231-50-4.625	EXTENSION 1 5/8 EIA	
2	7	PO-218-50	CONNECTOR, CENTER	
1	6	FW 25 HBN	WASHER, FLAT	
5	5	LWS 25 MRN	WASHER, LOCK, SPLIT	
1	4	SCHH2520BN10	SCREW, MACHINE, HEX HD	
4	3	SCRP2520BN16	SCREW, MACHINE, RD HD	
1	2	PM-708	PLATE, ADAPTER	
1	1	PM-710-1	ADAPTER, CENTER CONTACT	

LIST OF MATERIAL

MATERIAL	THE TECHNICAL MATERIEL CORP. MAMARONECK, NEW YORK		
FINISH	TITLE ADAPTER KIT 3/8 EIA FLANGE GPT-10K TRANSMITTER		
UNLESS OTHERWISE SPECIFIED DIMENSIONS ARE IN INCHES AND INCLUDE CHEMICALLY APPLIED OR PLATED FINISHES	DRAWN M. TANTILLO DATE 2-5-65	FINAL APPROVAL <i>[Signature]</i> DATE 2-18-65	DATE
DECIMALS .X ± .05 .XX ± .01 .XXX ± .005	TOLERANCES	FRACTIONS ± 1/64 ANGLES ± 0° 30'	ELECT. DES <i>[Signature]</i> DATE 2/18/65
Q'TY./UNIT SCALE		MODEL USED ON CODE	ASS'Y. NO. SHEET KIT-227 REV. LTR. A

NOTES

THE CONTENTS OF THIS DRAWING ARE THE EXCLUSIVE PROPERTY OF THE TECHNICAL MATERIEL CORP. ITS UNAUTHORIZED USE OR REPRODUCTION IN WHOLE OR IN PART IS STRICTLY FORBIDDEN.