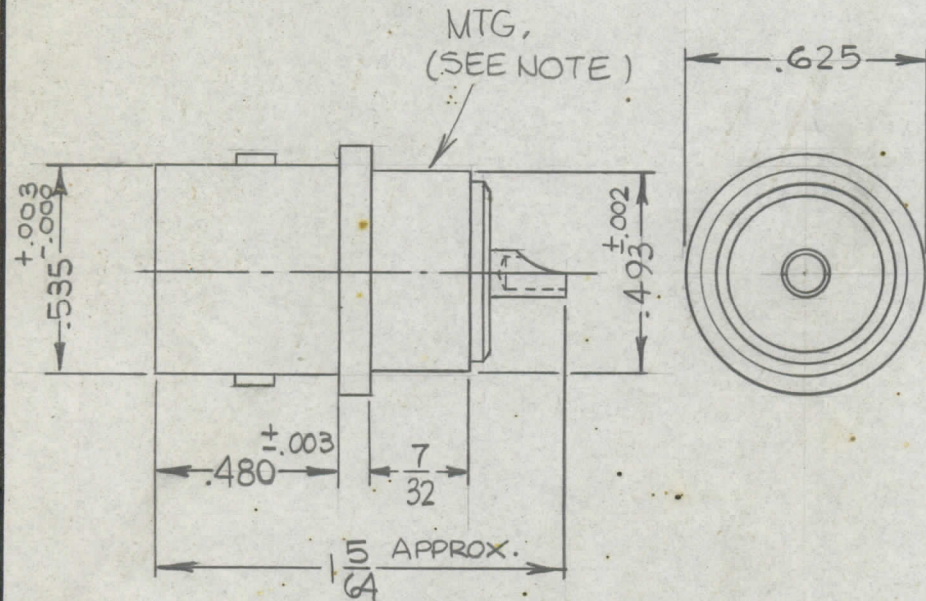


STANDARD DRAWING

REQ. PER UNIT	USED ON		JJ 255	Ø
	MODEL	ASS'Y. NO.		



SPECIFICATIONS

SERIES--C
NUMBER OF CONTACTS--ONE (1)
TYPE OF CONTACT--FEMALE
DIELECTRIC--TEFLON

ELECTRICAL DATA

MAX. PEAK OPR. VOLT--1500 V
FREQ. LIMIT--10,000 MC
NOMINAL IMPEDANCE--50 OHMS

CABLE ACCOMODATIONS

TYPE--SOLDER CUP

MATERIAL

EXTERNAL PARTS--BRASS
CONTACT--BERYLLIUM COPPER
GASKET--NONE

FINISH

EXTERNAL PARTS--SILVER PLATE, RHODIUM FLASH
CONTACT--SILVER PLATE, GOLD FLASH

MOUNTING-- SOLDER MOUNTED

REQ.	ITEM	PART NO.	DESCRIPTION	SYMBOL															
			THE TECHNICAL MATERIEL CORP. MAMARONECK. NEW YORK																
			CONNECTOR,																
			RECEPTACLE, SERIES C																
Ø	ORIGINAL RELEASE	9-29-65	H. AUSTIN	QC 9/24/65															
SYM	DESCRIPTION	DATE	CH. NO.	DRAFTS	CHECKER	ENG. APP.													
UNLESS OTHERWISE SPECIFIED DIMENSIONS ARE IN INCHES AND INCLUDE CHEMICALLY APPLIED OR PLATED FINISHES		SCALE		TYPE & TEMPER		HEAT TREAT. SPEC.		DRAWN		CHECKED		FINAL APPROVAL		FINISH & SPEC. NO.		ELEC. DES. APP.		MECH. DES. APP.	
DECIMALS .X ± .05 .XX ± .01 .XXX ± .005	TOLERANCES	FRACTIONS ± 1/64 ANGLES ± 0° 30'	CODE C	S401-70 (2699)								JJ 255						Ø	