

THE CONTENTS OF THIS DRAWING ARE THE EXCLUSIVE PROPERTY OF THE TECHNICAL MATERIEL CORP. ITS UNAUTHORIZED USE OR REPRODUCTION IN WHOLE OR IN PART IS STRICTLY FORBIDDEN.

REQ. PER UNIT	USED ON		
	MODEL	ASS'Y. NO.	DATE
7	HFI-1		4-4-62
4	SBS		4-4-62

JJ-245 B

NOTES:

1. MATERIAL - DIALLYL PHTHALATE GLASS-FILLED PER MIL-M-19833, TYPE GDI-30 (GD).
2. PIN CONTACT - BRASS, GOLD PLATED .00003 MINIMUM THICKNESS OVER .0002 SILVER PLATE.
3. MALE AND FEMALE MOUNTING PLATE AND BUSHING - STAINLESS STEEL, TYPE 303 PASSIVATED.
4. MOUNTING - SCREWS AND NUTS - BRASS CADMIUM PLATED, PER QQ-P-416 CLASS 3.
5. SOLDER CUP TO ACCEPT A 16 AWG WIRE.

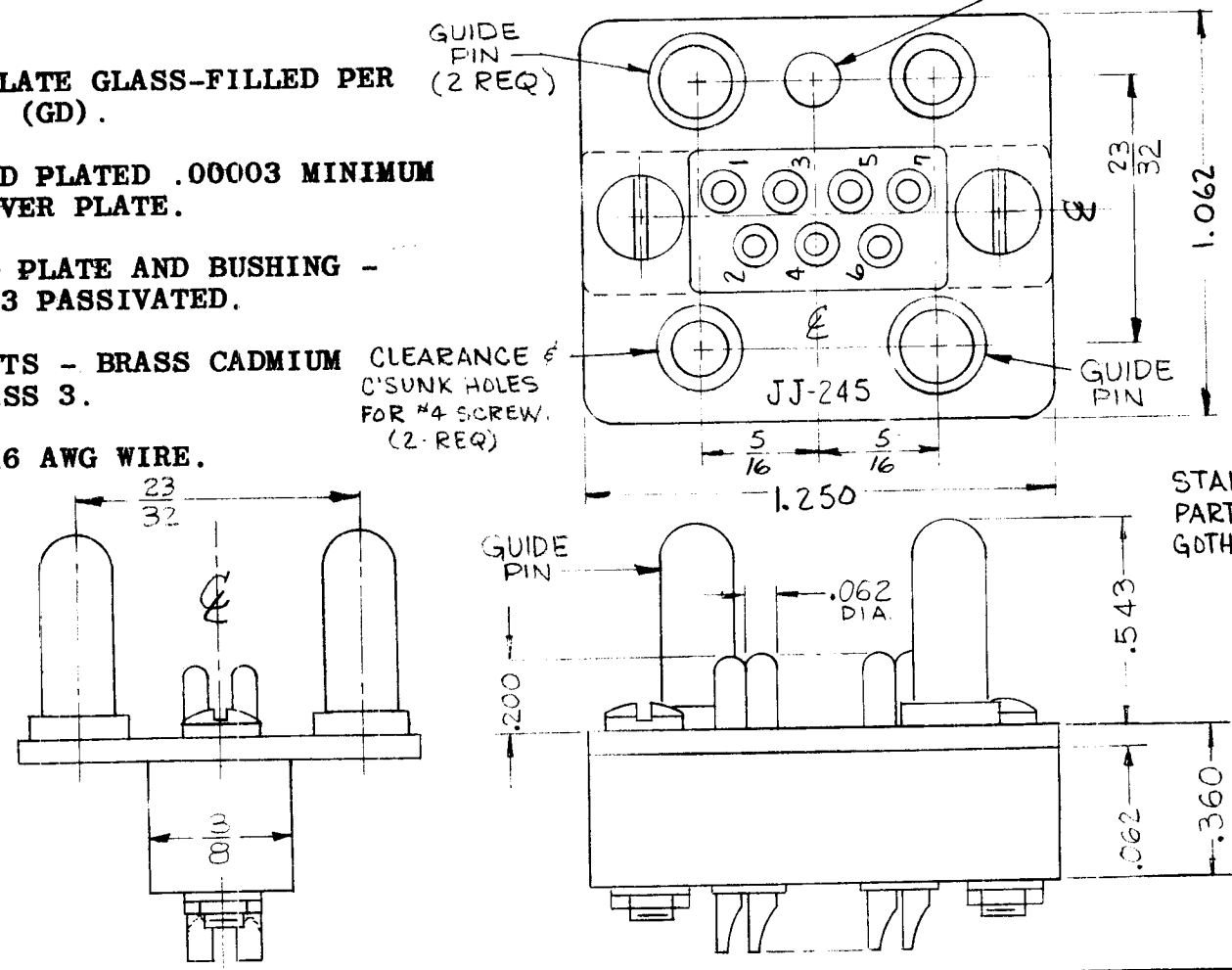
GUIDE PIN (2 REQ)

CLEARANCE FOR #6 SCREW (1-REQ)

CLEARANCE OF C'SUNK HOLES FOR #4 SCREW. (2-REQ)

STAMP TMC PART NO. 1/8 HIGH GOTHIC AS SHOWN

REF: MATES WITH JJ-216



REQ.	ITEM	PART NO.	DESCRIPTION				SYMBOL
THE TECHNICAL MATERIEL CORP. MAMARONECK, NEW YORK							
CONNECTOR, RECEPTACLE, MALE							
B	GUIDE PINS ADDED (NOTES) DIM. 23/32 WAS 3/8 C. TO C.	1-25-63	8091	<i>AG</i>	<i>AG</i>	<i>AG</i>	
A	DWG COMPLETELY REVISED	11-1-62	7537	<i>GB</i>	<i>GB</i>	<i>GB</i>	
SYM	DESCRIPTION	DATE	CH. NO.	DRAFTS	CHECKER	ENG. APP.	
UNLESS OTHERWISE SPECIFIED: DIMENSIONS ARE IN INCHES TOLERANCES ON FRAC. ± 1/64 DEC. ± .005 ANGLES ± 1/2°		SCALE: S-401-136					
MAXIMUM ALLOWABLE TOLERANCES HAVE BEEN DETERMINED AND ANY DEVIATIONS WILL BE CAUSE FOR REJECTION. REMOVE ALL BURRS AND SHARP EDGES		TYPE & TEMPER		HEAT TREAT. SPEC.		DRAWN	
FINISH & SPEC. NO.		ELEC. DES. APP.		MECH. DES. APP.		FINAL APPROVAL	
						JJ-245	
						B	