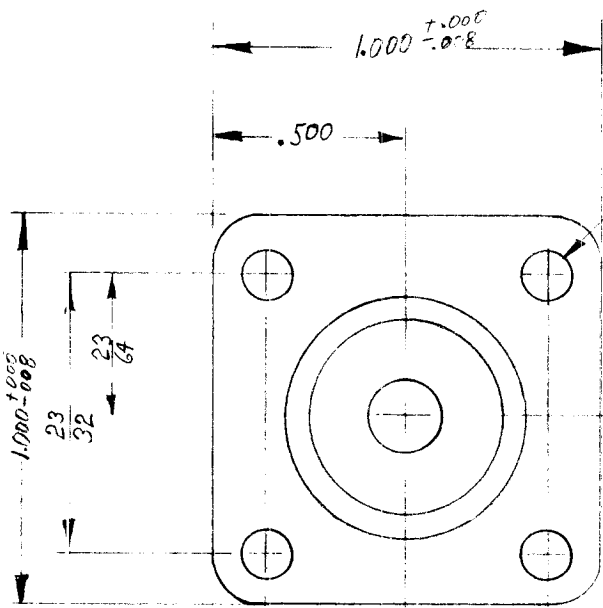
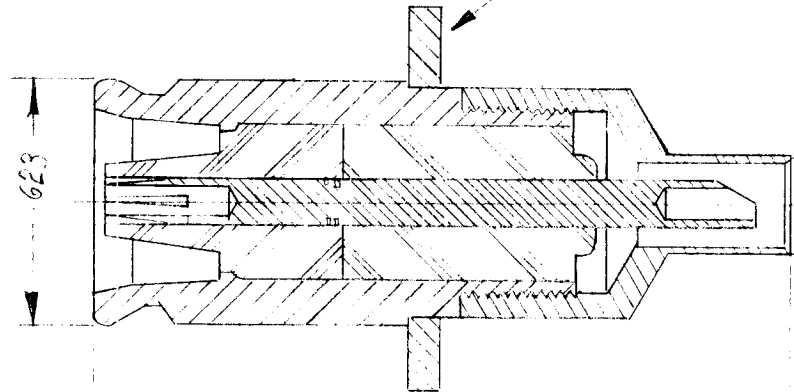


REQ. PER UNIT	USED ON			JJ-167	A
	MODEL	ASSY. NO.	DATE		
			2-16-60		



1/8 DIA
4 HOLES

STAMP TMC PART NO. (JJ-167)
IN 1/16 HIGH GOTHIC.



SPECIFICATIONS

SERIES ~ QDS
 NO OF CONTACTS ~ ONE (1)
 TYPE OF CONTACT ~ FEMALE
 DIELECTRIC ~ TEFLON

ELECTRICAL DATA
 MAX. PEAK VOLT. ~ 5,000 V.
 NOM. IMPEDANCE ~ 50Ω

CABLE ACCOMODATIONS
 TYPE ~ HOOD RG-58/U, RG-59/U

MATERIAL
 EXTERNAL PARTS - BRASS
 CONTACTS - BERYLLIUM COPPER

FINISH
 EXTERNAL PARTS ~ SILVER PLATE & RHODIUM FLASH.
 CONTACTS ~ SILVER PLATE & GOLD FLASH.

ISSUE	ITEM	CHANGED FROM	DATE	CH. NO.	DRAFTS	CHECKER	ENG. APP.	REQ.	ITEM	PART NO.	DESCRIPTION	SYMBOL	
											THE TECHNICAL MATERIEL CORP. MAMARONECK, NEW YORK		
											CONNECTOR, RECEPTACLE W/HOOD, QDS.		
A	1	SPECIFICATION ADDED	5/16/61										
TOLERANCES			SCALE: 2:1 S-401-70 (3245)										
DEC. DIM. ± FRAC. DIM. ± ANGULAR DIM. ±			MAXIMUM ALLOWABLE TOLERANCES HAVE BEEN DETERMINED AND ANY DEVIATIONS WILL BE CAUSE FOR REJECTION. REMOVE ALL BURRS AND SHARP EDGES					TYPE & TEMPER	HEAT TREAT. SPEC.	DRAWN	CHECKED	FINAL APPROVAL	
												JJ-167	A
								FINISH & SPEC. NO.	ELEC. DES. APP	MECH. DES. APP			