

IF IT IS FOUND DESIRABLE TO CHANGE ANY TOLERANCE OR OTHER DETAIL SPECIFIED ON THIS DRAWING NOTIFY THE PURCHASER PROMPTLY.

STANDARD DRAWING

JJ-048

MAXIMUM ALLOWABLE TOLERANCES HAVE BEEN DETERMINED AND DEVIATIONS WILL BE CAUSE FOR REJECTION. REMOVE ALL BURRS AND SHARP EDGES

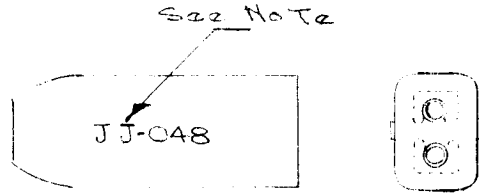
USED ON

MODEL

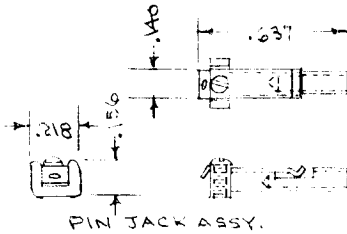
PROJECT NO.

ASS'Y. NO.

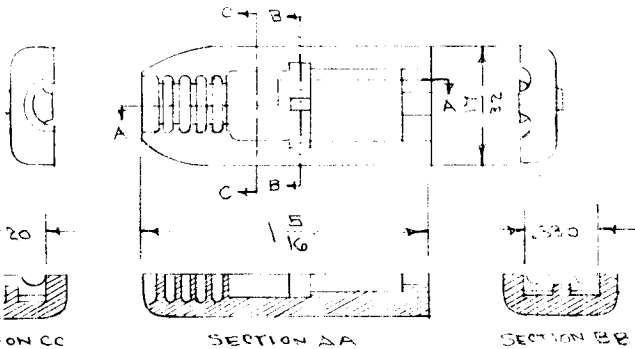
DATE



ASSEMBLY



PIN JACK ASSY.



NOTE

Type Number to be 3/32 Molded Characters, Raised Not More than 1/64 in Height.

TO BE IN ACC. WITH JAN-J-641 & AMEND

REQ.	ITEM	PART NO.	DESCRIPTION	SYMBOL
			THE TECHNICAL MATERIEL CORP. MAMARONECK, NEW YORK	
STOCK SIZE				
			JACK, TELEPHONE	
MATERIAL		WEIGHT PER PC.		
TYPE & TEMPER			C.D.D. 1-13-53	
HEAT TREAT. SPEC.			DRAWN	ELEC. DES. APP. MECH. DES. APP.
FINISH & SPEC. NO.			CHECKED	FINAL APPROVAL
			Super Sales JK-48 (JAN-J-641)	JJ-048

ISSUE ITEM CHANGED FROM DATE CN. NO. DRAFTS CHECKER ENG. APP.

TOLERANCES

SCALE

ALL OTHERS

DEC. DIM. $\pm .005$
FRAC. DIM. $\pm 1/64$
ANGULAR DIM. \pm

DRILL, PUNCH, COMMERCIAL STOCK SIZES AND MANUFACTURERS TOLERANCES ARE NOT INCLUDED.