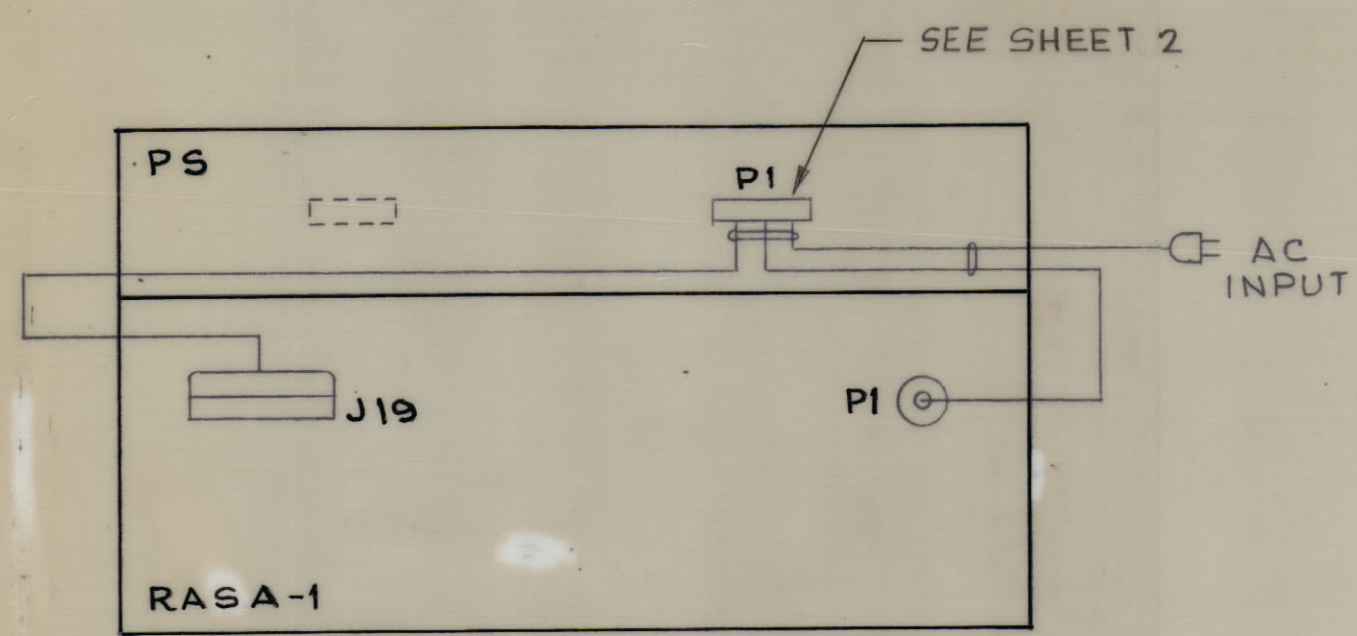


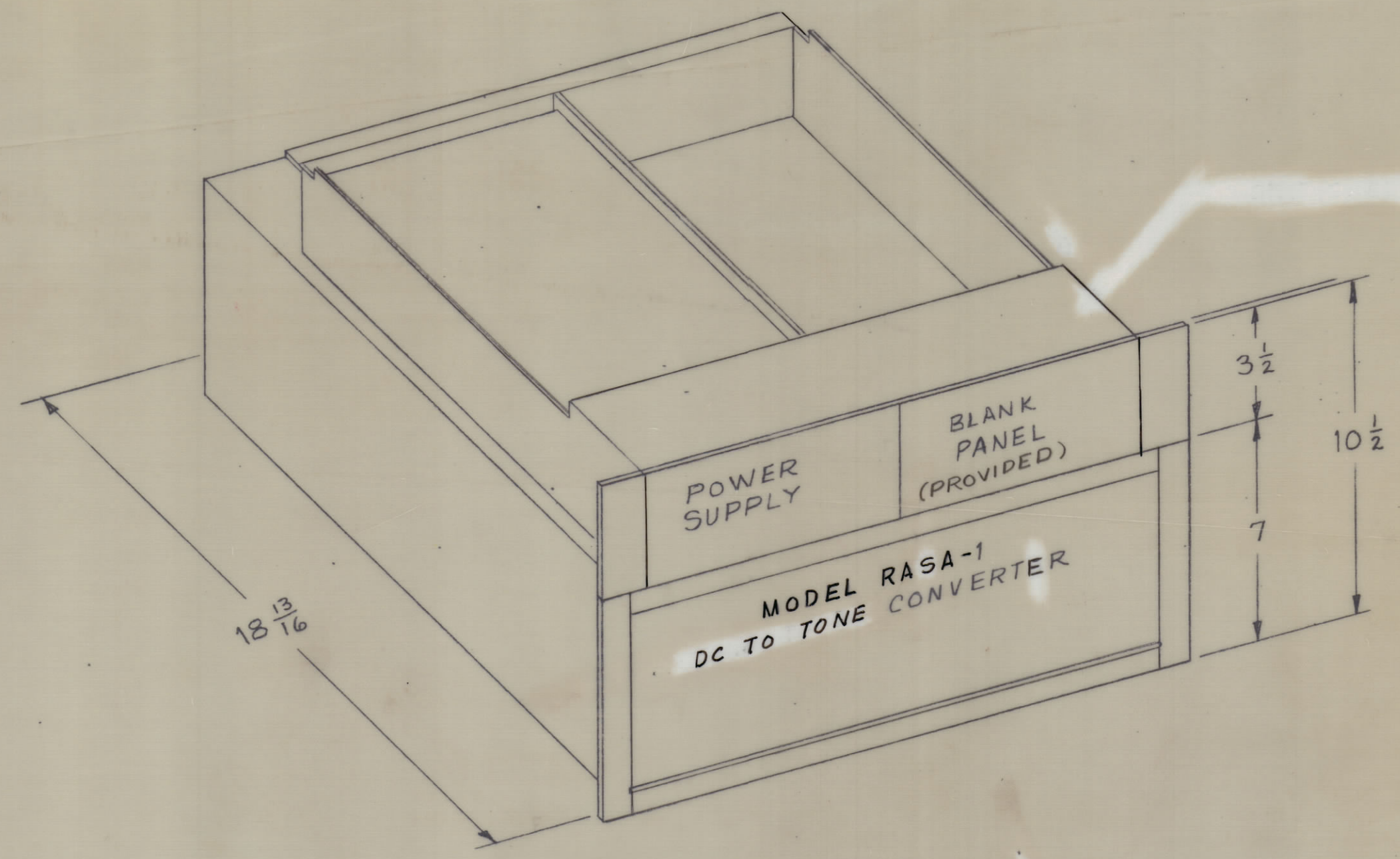
| REVISIONS | | | | | | |
|-----------|------|------------------------|---------|----------|-------|--------------------|
| SYM | ZONE | DESCRIPTION | DATE | E.M.N.O. | DRAFT | CHKD APPD |
| A | | REVISED | 9/27/65 | | NJT | |
| B | | REMOVED NOTE 1 SEE SH3 | 6/1/66 | 16315 | C.H. | <i>[Signature]</i> |

TECHNICAL DATA

POWER INPUT - 70 WATTS
 VOLTAGE - 115/230 VAC
 PHASE - 1 ϕ
 FREQUENCY - 50/60 CPS
 HEAT DISSIPATION - 70 WATTS, BTU 24/HR
 AMBIENT TEMP RANGE - 0° TO 50° C
 RELATIVE HUMIDITY - 0-90 %
 WEIGHT - 36 lbs.



INTERCONNECTION DIAGRAM



| QTY REQ | ITEM | PART NO. | DESCRIPTION | SYMBOL |
|---|------|---|---|--------|
| BILL OF MATERIAL | | | | |
| THE TECHNICAL MATERIEL CORP. MAMARONECK, NEW YORK | | | | |
| CONVERTER-POWER SUPPLY GROUP, SEND | | | | |
| UNLESS OTHERWISE SPECIFIED DIMENSIONS ARE IN INCHES TOLERANCES ON FRACTIONS DECIMALS ANGLES $\pm 1/64$ $\pm .005$ $\pm 1/2^\circ$ | | FINAL APPROVAL <i>[Signature]</i> DATE 5/25/65 | CODE 82679 SIZE C DWG. NO. ID-330 ISSUE B | |
| MATERIAL | | MECH. DES. <i>[Signature]</i> DATE 5/25/65 | | |
| FINISH | | ELECT. DES. <i>[Signature]</i> DATE 5-25-65 | | |
| MAXIMUM ALLOWABLE TOLERANCES HAVE BEEN DETERMINED AND ANY DEVIATIONS WILL BE CAUSE FOR REJECTION. | | CHECKED <i>[Signature]</i> DATE 5-19-65 | | |
| | | DRAWN M. TANTILLO DATE 5-14-65 | | |
| | | APPROVED FOR BUSHIPS | SCALE <i>NONE</i> WGT. SHEET 1 OF 5 | |
| | | CONTRACT NO. N600(63133-11-126)63002 | | |

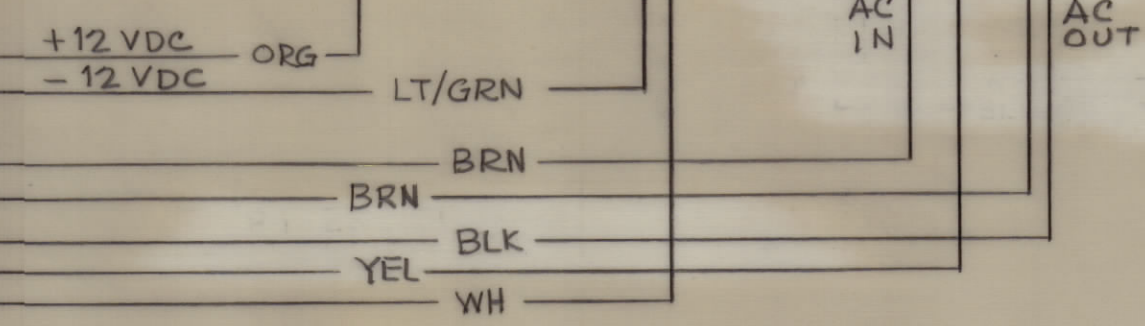
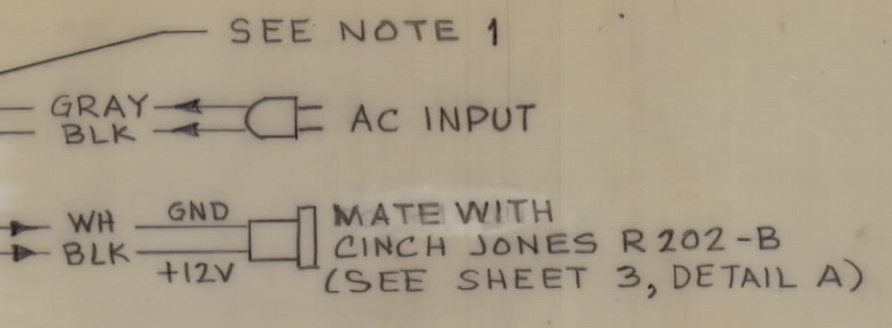
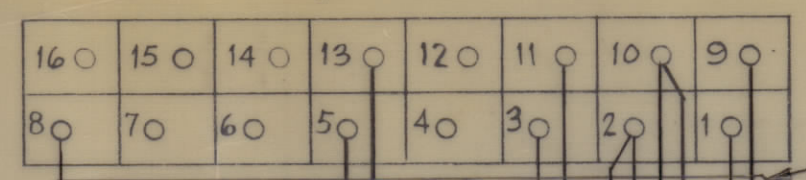
| REVISIONS | | | | | | | |
|-----------|------|---------------|---------|----------|-------|------|------|
| SYM | ZONE | DESCRIPTION | DATE | E.M.N.NO | DRAFT | CHKD | APPD |
| A | | REVISED | 9/27/65 | | MJT | | |
| B | | SEE SH 1 & 3. | 6/1/66 | 16315 | CH | | |

AMPHENOL
57-30500

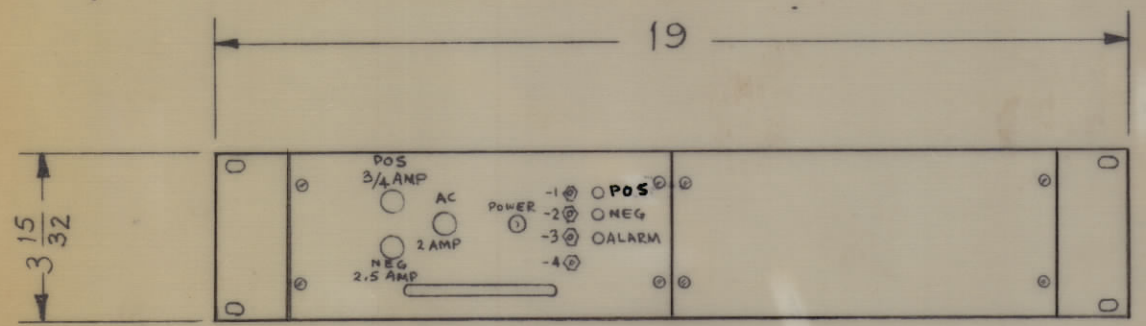
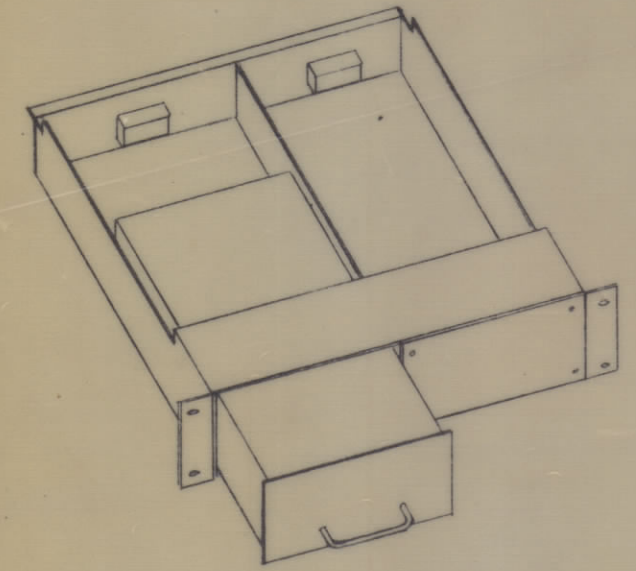
DETAIL A

P1

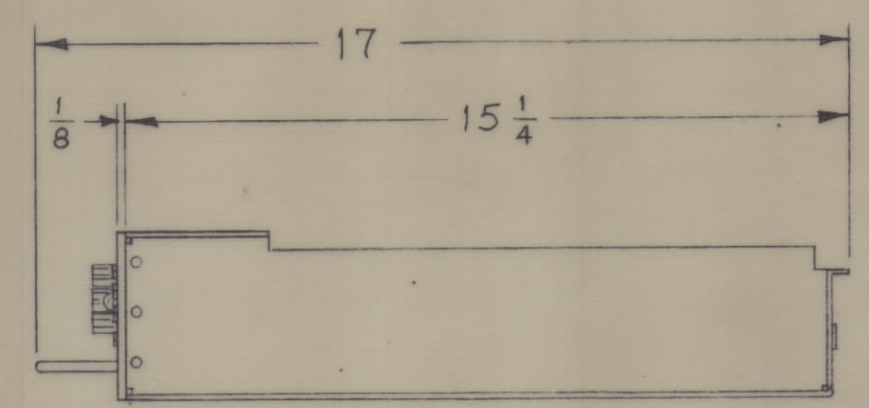
| | |
|----|----|
| 26 | 1 |
| 27 | 2 |
| 28 | 3 |
| 29 | 4 |
| 30 | 5 |
| 31 | 6 |
| 32 | 7 |
| 33 | 8 |
| 34 | 9 |
| 35 | 10 |
| 36 | 11 |
| 37 | 12 |
| 38 | 13 |
| 39 | 14 |
| 40 | 15 |
| 41 | 16 |
| 42 | 17 |
| 43 | 18 |
| 44 | 19 |
| 45 | 20 |
| 46 | 21 |
| 47 | 22 |
| 48 | 23 |
| 49 | 24 |
| 50 | 25 |



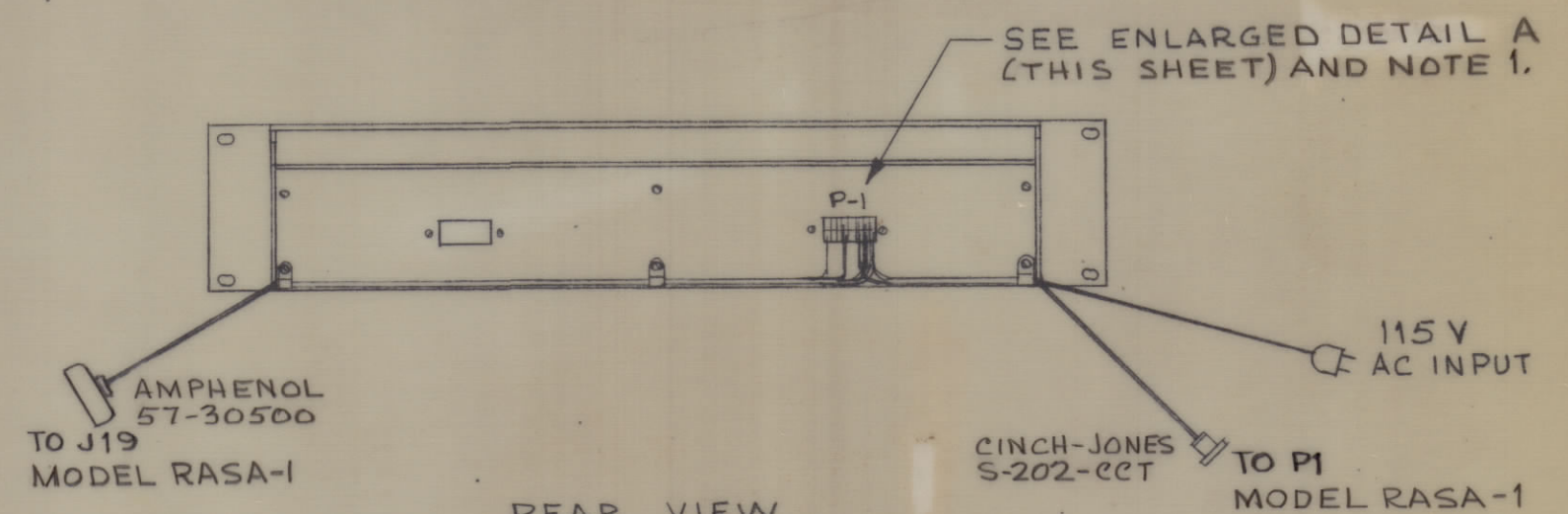
MATES WITH
AMPHENOL 57-40500
(SEE SHEET 3
DETAIL B)



FRONT VIEW



RIGHT SIDE VIEW



REAR VIEW

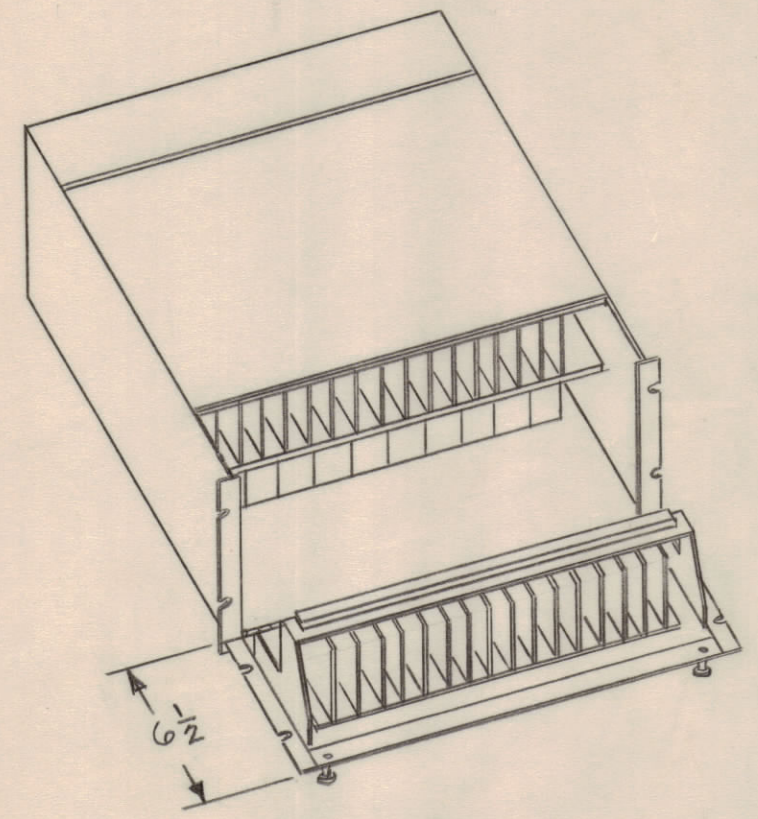
SEE ENLARGED DETAIL A
(THIS SHEET) AND NOTE 1.

NOTE:
1- CABLE HARNESS PART OF SHELF
ATTACHED TO P1. DETAIL A (THIS
SHEET) SHOWS CABLING PROVIDED
AS PART OF THE EQUIPMENT.

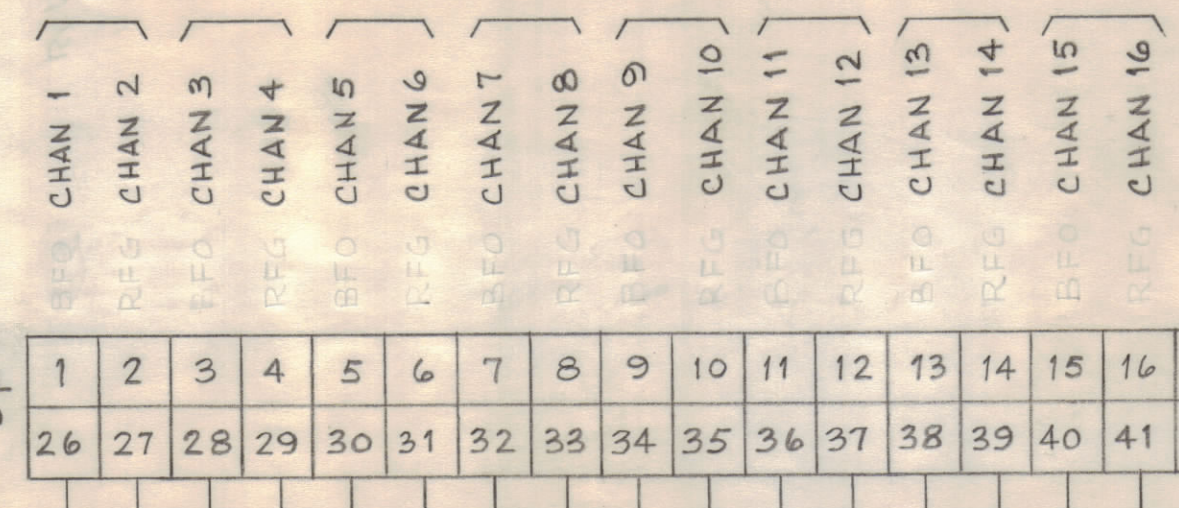
MAXIMUM
ALLOWABLE TOLERANCES HAVE BEEN
DETERMINED AND ANY DEVIATIONS
WILL BE CAUSE FOR REJECTION.

| QTY REQ | ITEM | PART NO. | DESCRIPTION | SYMBOL |
|---|------|---|---|-------------------------------------|
| BILL OF MATERIAL | | | | |
| THE TECHNICAL MATERIEL CORP. MAMARONECK, NEW YORK | | | | |
| CONVERTER-POWER SUPPLY GROUP, SEND | | | | |
| UNLESS OTHERWISE SPECIFIED DIMENSIONS ARE IN INCHES TOLERANCES ON FRACTIONS DECIMALS ANGLES ±1/64 ±.005 ±1/2° | | FINAL APPROVAL <i>[Signature]</i> DATE 5/25/65 | CODE 82679 C DWG. NO. ID-330 ISSUE B | |
| MATERIAL | | MECH. DES. <i>[Signature]</i> DATE 5/25/65 | | |
| FINISH | | ELECT. DES. <i>[Signature]</i> DATE 5-25-65 | | |
| | | CHECKED <i>[Signature]</i> DATE 5-19-65 | | |
| | | DRAWN M. TANTILLO DATE 5-17-65 | | |
| | | APPROVED FOR BUSHIPS | CONTRACT NO. N600(63133-11-126)63002 | SCALE None WGT. 11 LBS SHEET 2 OF 5 |

| REVISIONS | | | | | | | |
|-----------|------|-------------------------|---------|-----------|-------|------|--------------------|
| SYM | ZONE | DESCRIPTION | DATE | E.M.N.NO. | DRAFT | CHKD | APPD |
| A | | REVISED | 9/27/65 | | | MJT | |
| B | | 6 31/32 WAS 7. SEE SH 1 | 6/1/66 | 16315 | | C.H. | <i>[Signature]</i> |

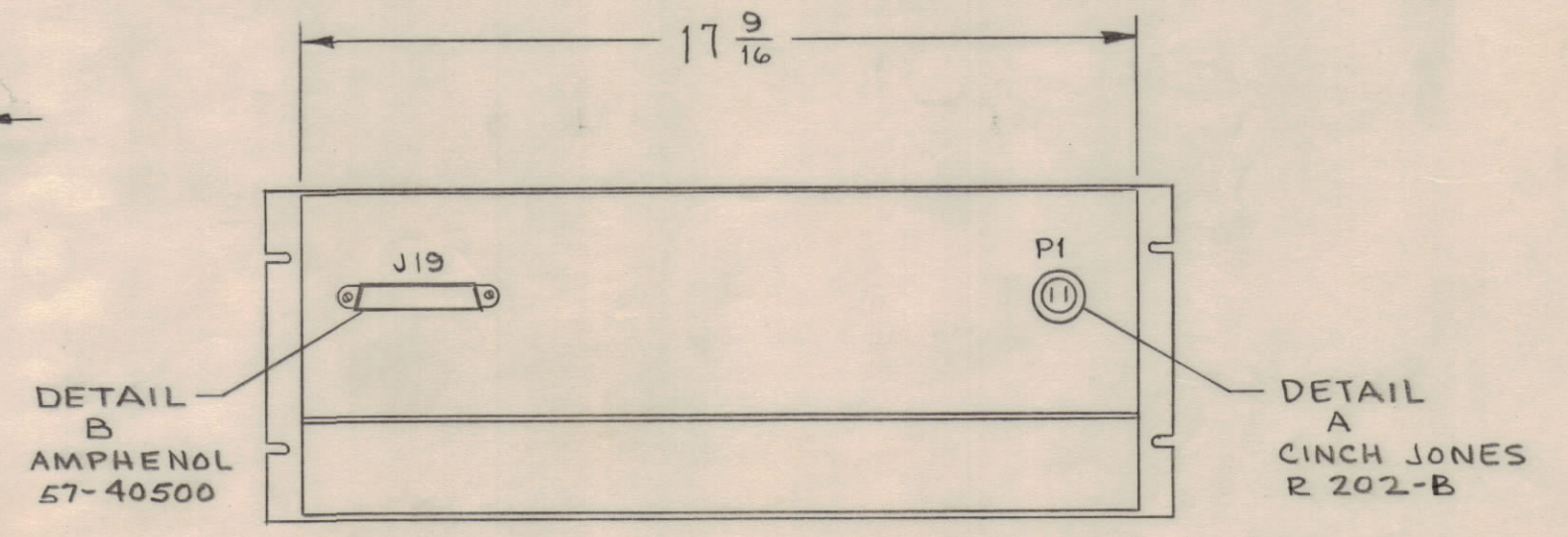
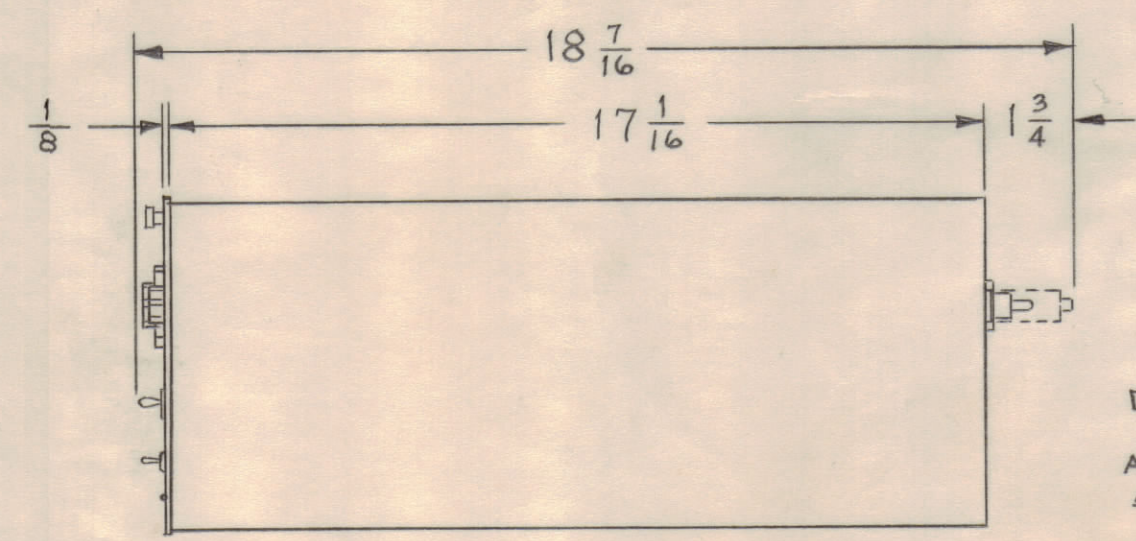
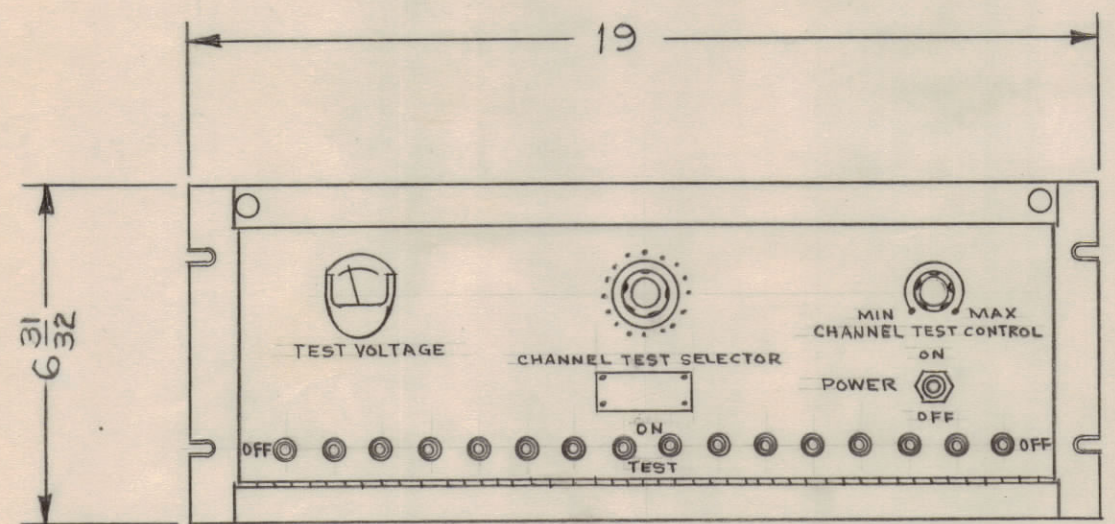
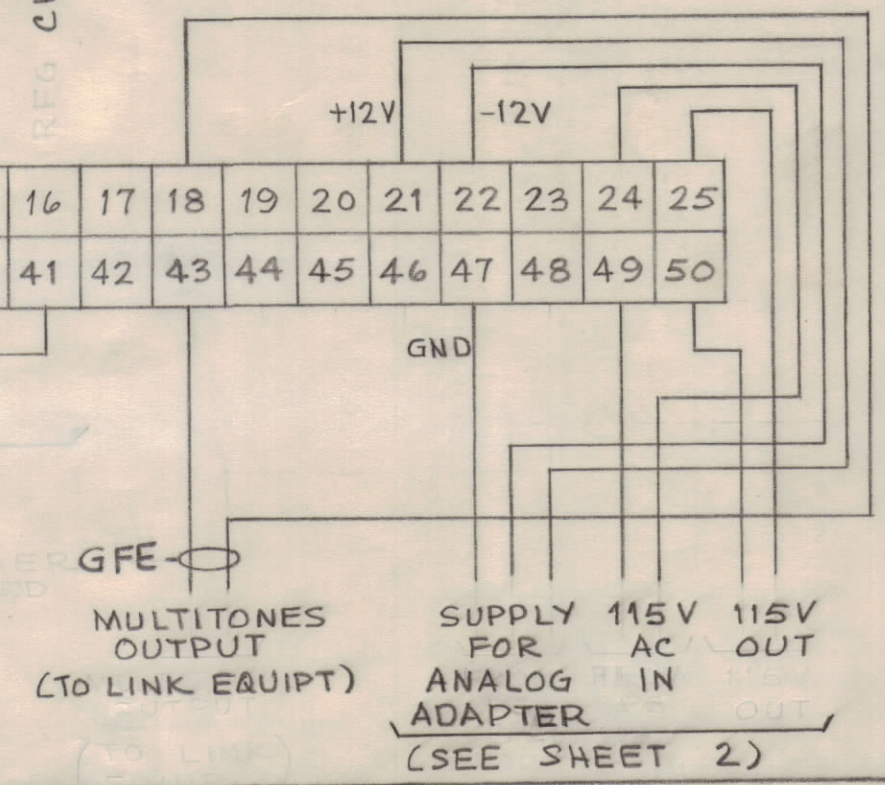


J19
AMPHENOL
57-40500
(MATES WITH
AMPHENOL
57-30500
SEE SHEET 2)



SEE SHEET 4 FOR INTERCONNECTIONS

DETAIL B



UNLESS OTHERWISE SPECIFIED
DIMENSIONS ARE IN INCHES
TOLERANCES ON
FRACTIONS DECIMALS ANGLES
±1/64 ±.005 ±1/2°

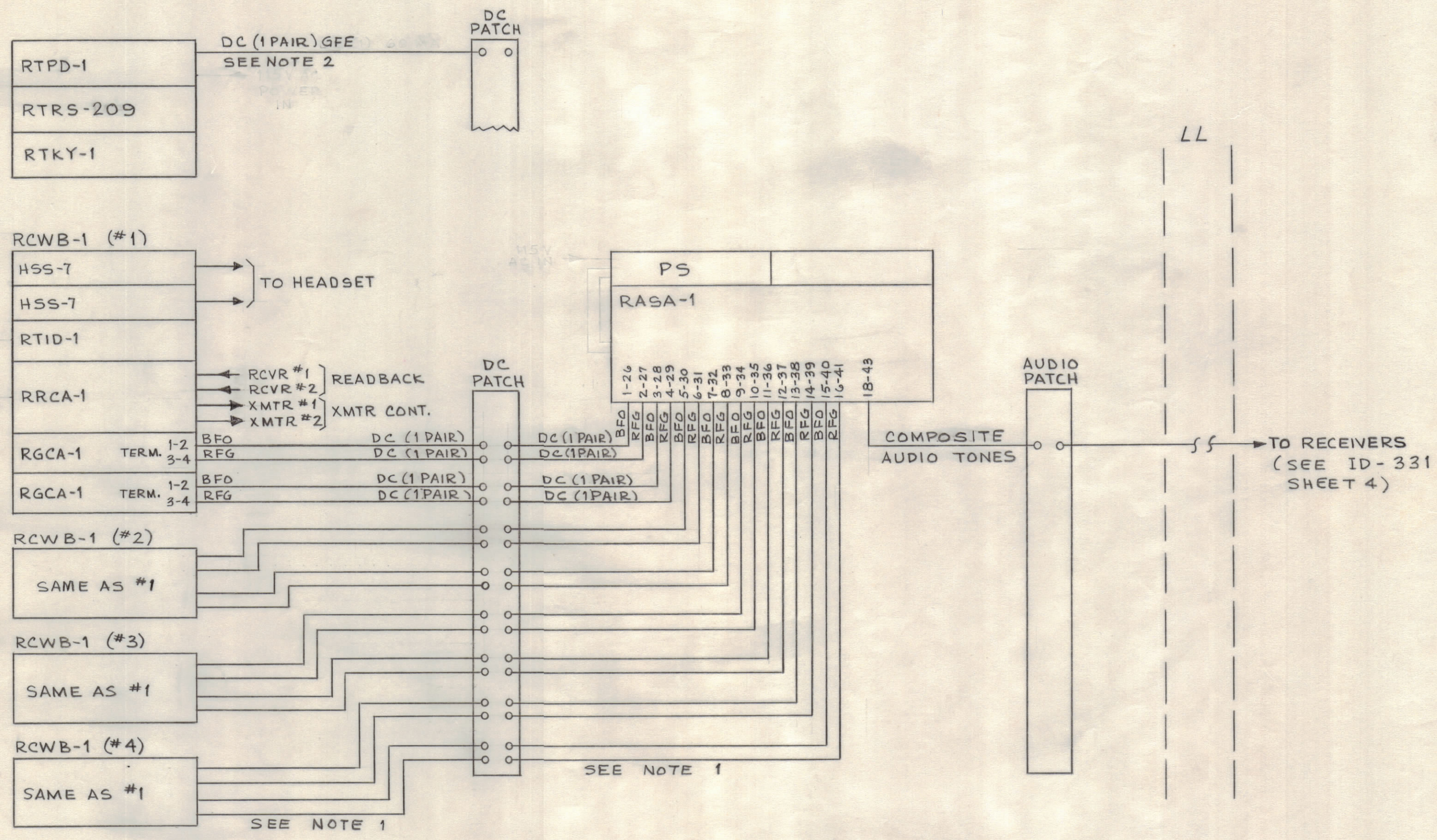
MATERIAL

FINISH

MAXIMUM
ALLOWABLE TOLERANCES HAVE BEEN
DETERMINED AND ANY DEVIATIONS
WILL BE CAUSE FOR REJECTION.

| QTY REQ | ITEM | PART NO. | DESCRIPTION | SYMBOL |
|--|------|---------------------------|--|--------|
| BILL OF MATERIAL | | | | |
| THE TECHNICAL MATERIEL CORP. MAMARONECK, NEW YORK | | | | |
| | | | CONVERTER-POWER SUPPLY GROUP, SEND | |
| | | | CONVERTER, MODEL RASA-1 | |
| FINAL APPROVAL | | DATE | CODE 82679 C DWG. NO. ID-330 SCALE NONE WGT. 25 LBS SHEET 3 OF 5 | |
| MECH. DES. | | DATE | | |
| ELECT. DES. | | DATE | | |
| CHECKED | | DATE | | |
| DRAWN | | DATE | | |
| APPROVED FOR BUSHIPS | | | | |
| CONTRACT NO. | | N600 (63133-11-126) 63002 | | |
| | | ISSUE | B | |

| REVISIONS | | | | | | | |
|-----------|------|---------------|---------|-----------|-------|--------------------|------|
| SYM | ZONE | DESCRIPTION | DATE | E.M.N.NO. | DRAFT | CHKD | APPD |
| A | | REVISED | 9/27/65 | | | MJT | |
| B | | SEE SH 1 & 3. | 6/1/66 | 16315 | C.H. | <i>[Signature]</i> | |



NOTE 1. FOR DETAILS SEE ID-325 SHEET 4.
ALL CABLING AND PATCHING FACILITIES SHOWN ARE GFE.

2. DRY CONTACT OUTPUT OF PROGRAMMER MARK SIGNAL FOR CONTACT CLOSURE.

MAXIMUM ALLOWABLE TOLERANCES HAVE BEEN DETERMINED AND ANY DEVIATIONS WILL BE CAUSE FOR REJECTION.

| QTY REQ | ITEM | PART NO. | DESCRIPTION | SYMBOL |
|---|------|--|--|--------|
| BILL OF MATERIAL | | | | |
| UNLESS OTHERWISE SPECIFIED DIMENSIONS ARE IN INCHES TOLERANCES ON FRACTIONS DECIMALS ANGLES | | THE TECHNICAL MATERIEL CORP. MAMARONECK, NEW YORK CONVERTER-POWER SUPPLY GROUP, SEND, SIMPLIFIED SYSTEM DIAGRAM | | |
| ±1/64 ±.005 ± 1/2° | | | | |
| MATERIAL | | | | |
| FINISH | | | | |
| FINAL APPROVAL | | DATE | CODE 82679 SIZE C DWG. NO. ID-330 ISSUE B SCALE NONE SHEET 4 OF 5 | |
| MECH. DES. | | DATE | | |
| ELECT. DES. | | DATE | | |
| CHECKED | | DATE | | |
| DRAWN | | DATE | | |
| APPROVED FOR BUSHIPS | | | | |
| CONTRACT NO. | | N600(63133-11-126)63002 | | |

| REVISIONS | | | | | | | |
|-----------|------|-----------------|--------|-----------|-------|------|------|
| SYM | ZONE | DESCRIPTION | DATE | E.M.N.NO. | DRAFT | CHKD | APPD |
| A | | REVISED | 9/2/65 | | | | |
| B | | SEE SHTS 1 & 3. | 9/1/66 | 16315 | C.H. | | |

| INSTALLATION MATERIAL LIST | | | | |
|----------------------------|---------|---|--------------------|---------------------------|
| PC NO. | QTY | DESCRIPTION | NAVY OR COML DESIG | FURNISHED BY (GFE OR CFM) |
| 1 | 1 | CONVERTER-POWER SUPPLY GROUP CONSISTS OF: | | CFM |
| 2 | 1 | CONVERTER, DC TO TONE | AX-585 | CFM |
| 3 | 1 | POWER SUPPLY DRAWER | AX-583 | CFM |
| 4 | 1 | POWER SUPPLY | AR-127 | CFM |
| 5 | 8 | SCREW, MACHINE | SCBP1032 BNB | CFM |
| 6 | 8 | WASHER, FIBER, FLAT | WA-101-5 | CFM |
| 7 | AS REQD | TWISTED-SHIELDED-PAIR, RADIO FLEXIBLE CABLE | TTRS | GFE |

| QTY REQ | ITEM | PART NO. | DESCRIPTION | SYMBOL |
|---|------|---|--------------------|---|
| BILL OF MATERIAL | | | | |
| UNLESS OTHERWISE SPECIFIED DIMENSIONS ARE IN INCHES TOLERANCES ON FRACTIONS DECIMALS ANGLES ±1/64 ±.005 ±1/2° | | FINAL APPROVAL <i>M. Tantillo</i> | DATE 3/4/66 | THE TECHNICAL MATERIEL CORP. MAMARONECK, NEW YORK CONVERTER-POWER SUPPLY GROUP, SEND |
| MATERIAL | | MECH. DES. | DATE | |
| FINISH | | ELECT. DES. | DATE | |
| | | CHECKED | DATE | |
| | | DRAWN M TANTILLO | DATE 9-20-65 | |
| | | APPROVED FOR BUSHIPS | CODE 82679 | SIZE C |
| | | CONTRACT NO. N600 (63133-11-126) 63002 | DWG. NO. ID-330 | ISSUE B |
| | | | SCALE NONE | SHEET 5 OF 5 |

MAXIMUM ALLOWABLE TOLERANCES HAVE BEEN DETERMINED AND ANY DEVIATIONS WILL BE CAUSE FOR REJECTION.