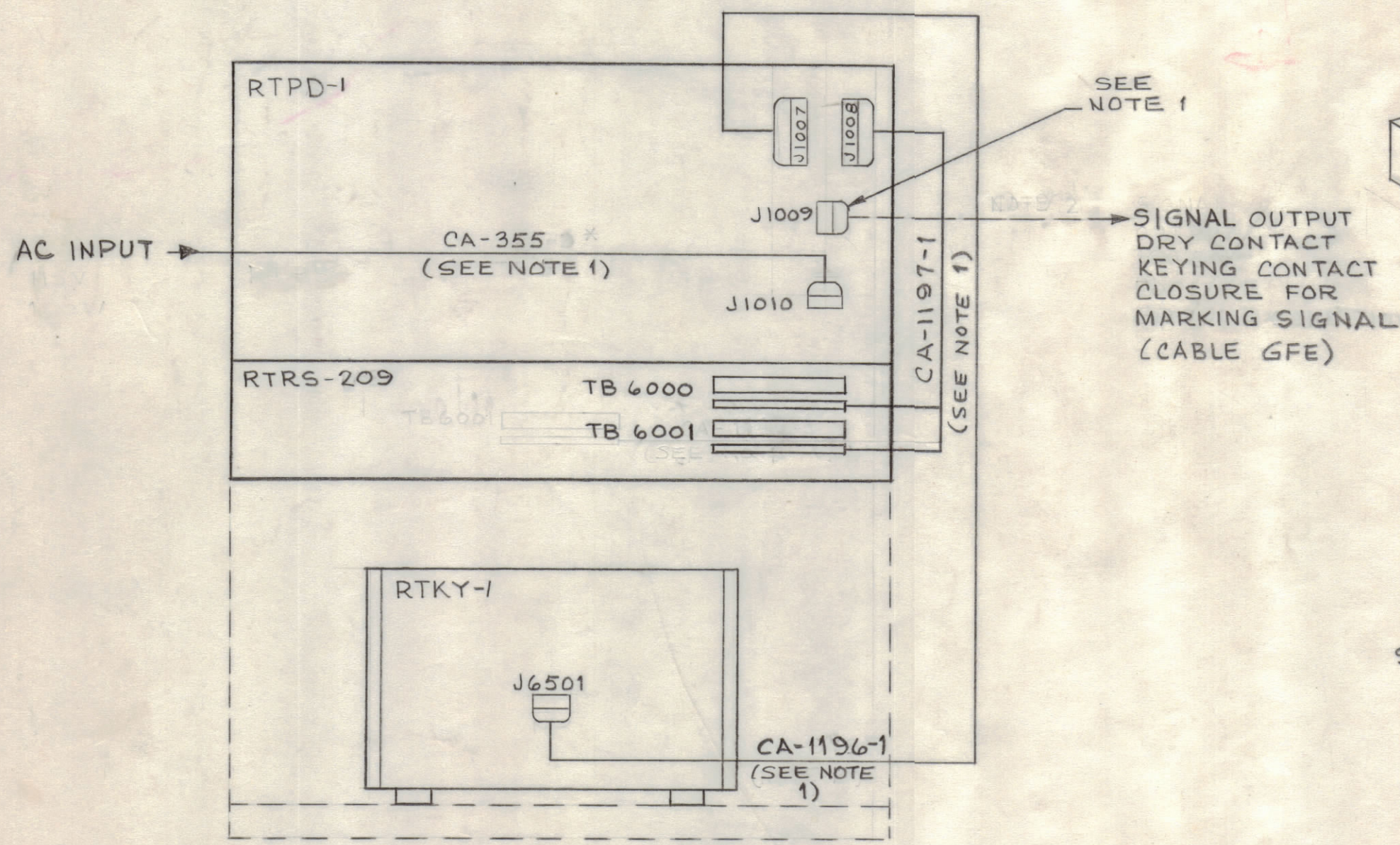
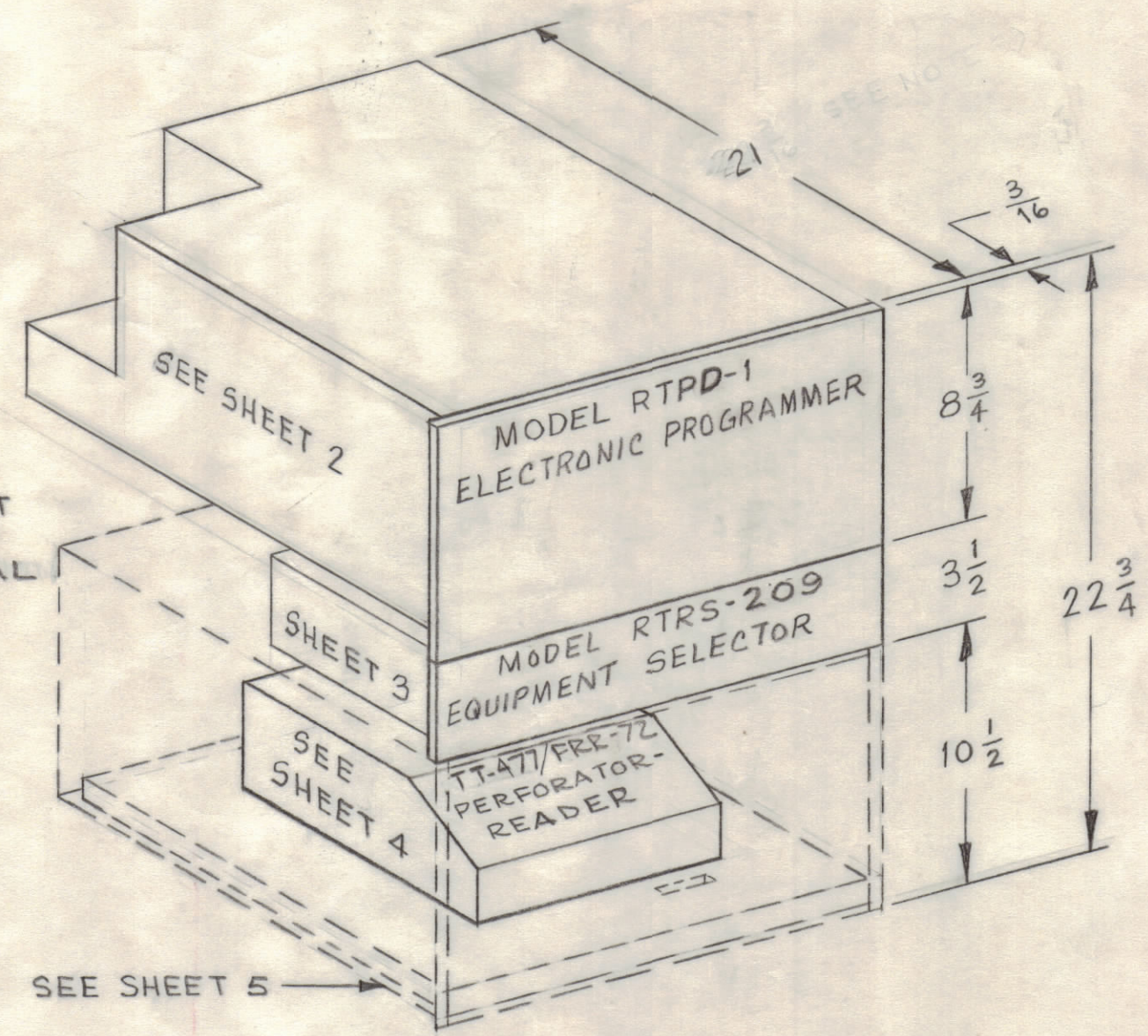


REVISIONS						
SYM	ZONE	DESCRIPTION	DATE	E.M.N.NO.	DRAFT	CHKD APPD
A		REVISED	9/27/65		MJT	
B	D5 E5	CA-1196-1 WAS CA-973 CA-1197-1 WAS CA-1145-3	1/17/66	#	MJT	
C		POWER INPUT WAS 150W; HEAT DIS SIPATION WAS 100W/342 BTU/HR SEE SHEET 4 OF 6; TECH DATA, DIM CLARIFIED, SEE SHEETS 2,3,4	5-23-66	16287	WHD	<i>[Signature]</i>



INTERCONNECTION DIAGRAM



TECHNICAL DATA

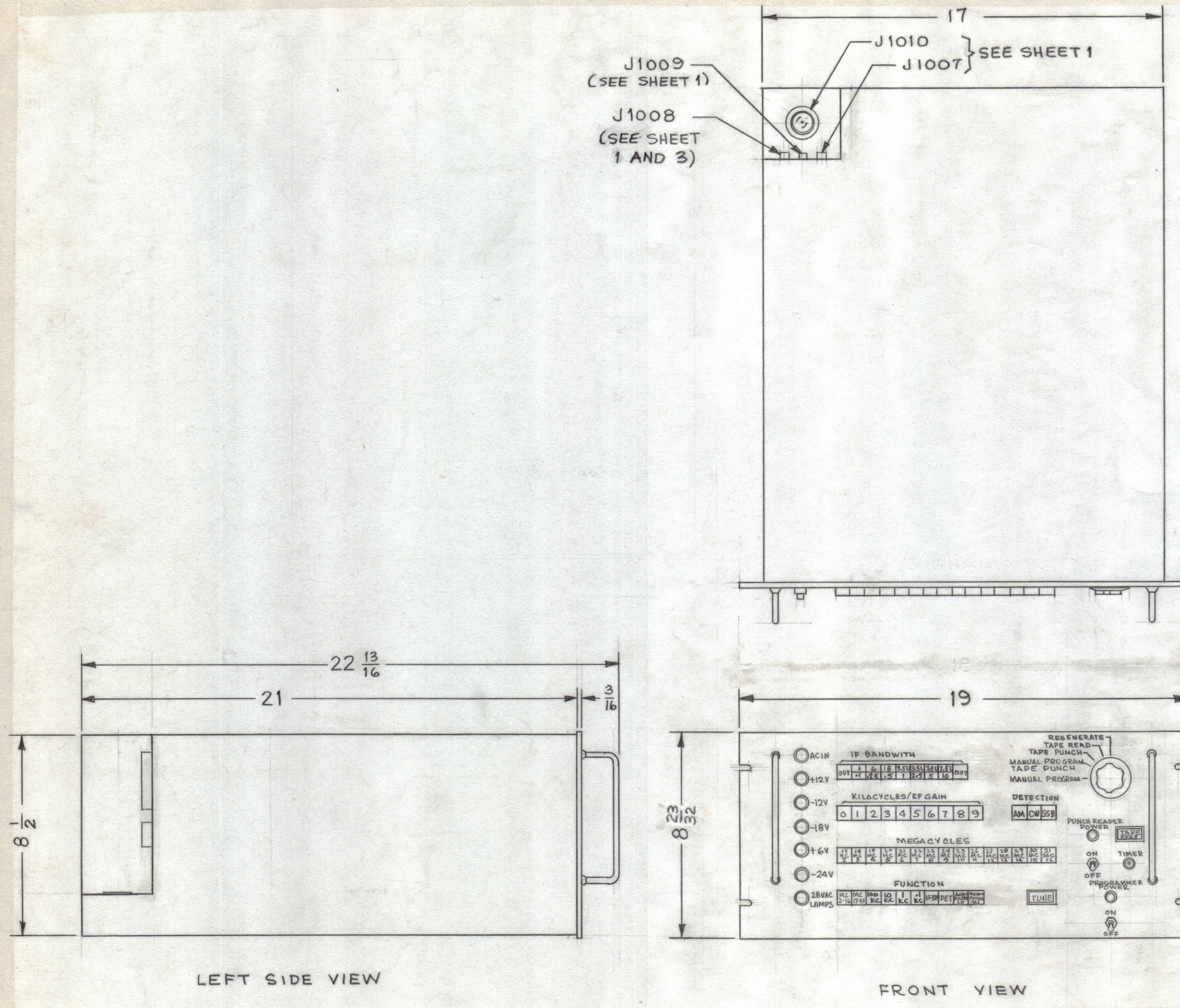
POWER INPUT -	150 WATTS
VOLTAGE -	115/230 VAC
PHASE -	1 φ
FREQUENCY -	60 CPS
HEAT DISSIPATION -	150 WATTS/510 BTU/HR
AMBIENT TEMP RANGE -	20° TO 45° C
RELATIVE HUMIDITY -	20 TO 90%
WEIGHT -	79 lbs.

- NOTES:
1. SEE SHEET 6 FOR INSTALLATION
 2. MATERIAL LIST IS SUPPLIED
 3. A RECOMMENDED PARTS LIST IS RECOMMENDED FOR THIS EQUIPMENT

MAXIMUM ALLOWABLE TOLERANCES HAVE BEEN DETERMINED AND ANY DEVIATIONS WILL BE CAUSE FOR REJECTION.

QTY REQ	ITEM	PART NO.	DESCRIPTION	SYMBOL
BILL OF MATERIAL				
THE TECHNICAL MATERIEL CORP. MAMARONECK, NEW YORK				
REMOTE TUNING CONTROL GROUP				
SUGGESTED EQUIPMENT LAYOUT AND INTERCONNECTION DIAGRAM				
UNLESS OTHERWISE SPECIFIED DIMENSIONS ARE IN INCHES TOLERANCES ON FRACTIONS DECIMALS ANGLES ±1/64 ±.005 ±1/2°		FINAL APPROVAL <i>[Signature]</i> MECH. DES. DATE 5/15/65	ELECT. DES. <i>[Signature]</i> DATE 5-18-65	CHECKED <i>[Signature]</i> DATE 5-13-65
MATERIAL		DRAWN M. J. TANTILLO	DATE 5-7-65	APPROVED FOR BUSHIPS
FINISH		CONTRACT NO. N600(63133-11-126)63002	CODE 82679	SIZE C
			DWG. NO. ID-327	ISSUE C
			SCALE NONE	SHEET 1 OF 6

REVISIONS						
SYM	ZONE	DESCRIPTION	DATE	E.M.N. NO.	DRAFT	CHKD APPD
A		REVISED	9/27/65		MJT	
B		SEE SHEETS 1, 3 & 4 OF 6	5.23.66	#	WPD	
C		SEE SHEET 1, 3 & 4; B 2 ³ / ₃₂ WAS B 3/4	5.23.66	16287	WPD	JLB JEE



TECHNICAL DATA

POWER INPUT - 100 WATTS
 VOLTAGE - 115/230 VAC
 PHASE - 1 φ
 FREQUENCY - 50/60 CPS
 HEAT DISSIPATION - 100 WATTS/340 BTU
 AMBIENT TEMP RANGE - 0° TO 50° C
 RELATIVE HUMIDITY - 0 - 90%
 WEIGHT - 49 lbs.

NOTE

1. SEE SHEET 6 FOR INSTALLATION MATERIAL LIST.

MAXIMUM ALLOWABLE TOLERANCES HAVE BEEN DETERMINED AND ANY DEVIATIONS WILL BE CAUSE FOR REJECTION.

QTY REQ	ITEM	PART NO.	DESCRIPTION	SYMBOL
BILL OF MATERIAL				
UNLESS OTHERWISE SPECIFIED DIMENSIONS ARE IN INCHES TOLERANCES ON FRACTIONS DECIMALS ANGLES ±1/64 ±.005 ±1/2°			THE TECHNICAL MATERIEL CORP. MAMARONECK, NEW YORK	
MATERIAL		REMOTE TUNING CONTROL GROUP PROGRAMMER, ELECTRONIC		
FINISH		OUTLINE AND DIMENSIONS		
APPROVED FOR BUSHIPS		CODE	SIZE	DWG. NO.
CONTRACT NO.		82679	C	ID-327
N600 (63133-11-126) 63002		SCALE	NONE	SHEET 2 OF 6

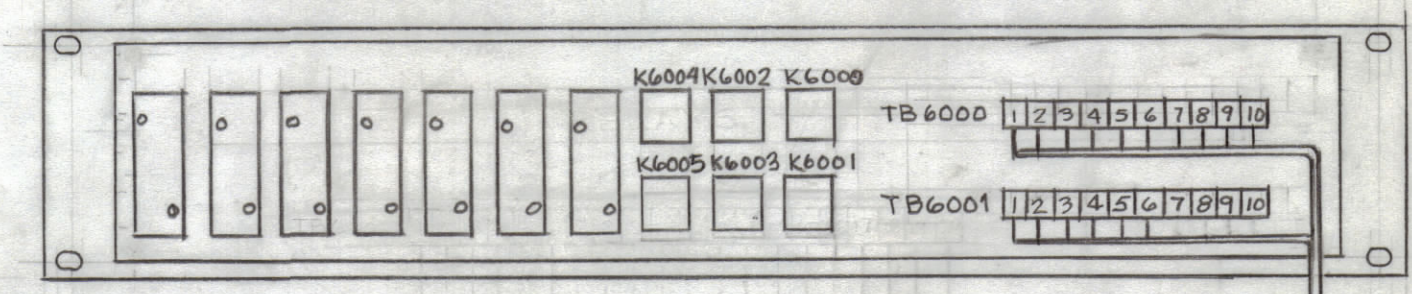
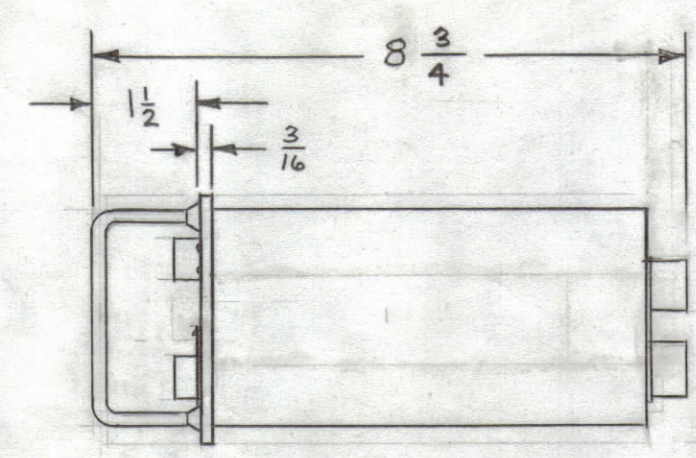
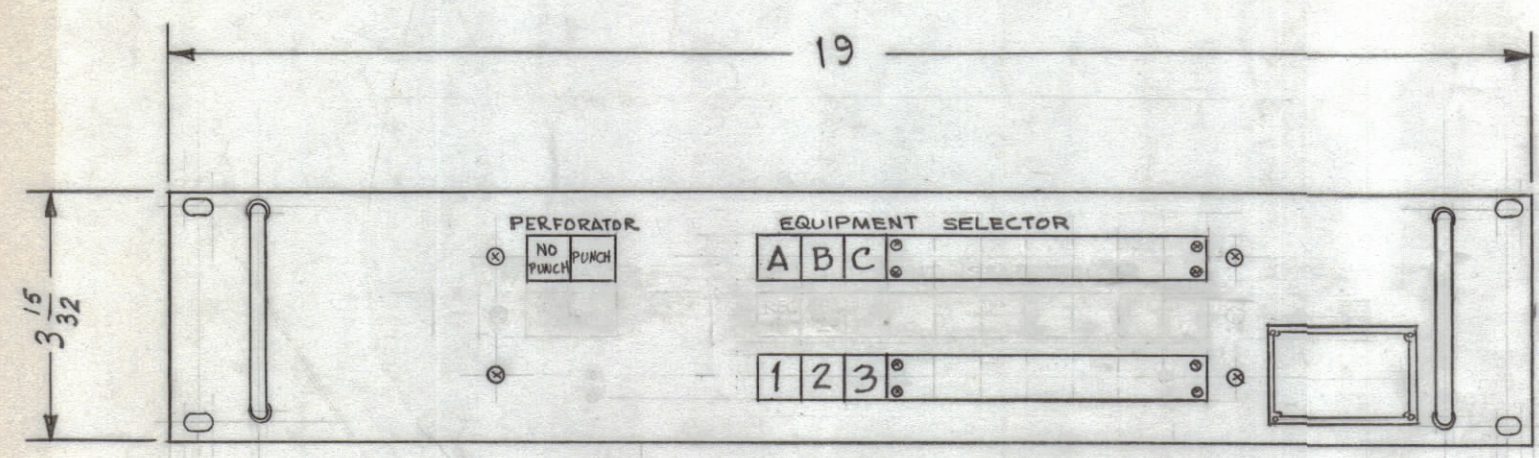
FINAL APPROVAL <i>[Signature]</i> MECH. DES.	DATE 5/18/65
ELECT. DES. <i>[Signature]</i>	DATE 5-18-65
CHECKED <i>[Signature]</i>	DATE 5-13-65
DRAWN M. TANTILLO	DATE 5-4-65

REVISIONS						
SYM	ZONE	DESCRIPTION	DATE	E.M.N.NO.	DRAFT	CHKD APPD
A		REVISED	9/27/65		MJT	
B	E2,E6 EG	CA-1197-1 WAS CA-1145-3 UPDATED. DETAIL "A"	1/17/66	#	MJT	
C		SEE SHEETS 1,2,4. TECH DATA ADDED	5/23/66	16287	WHD	<i>JEB</i>

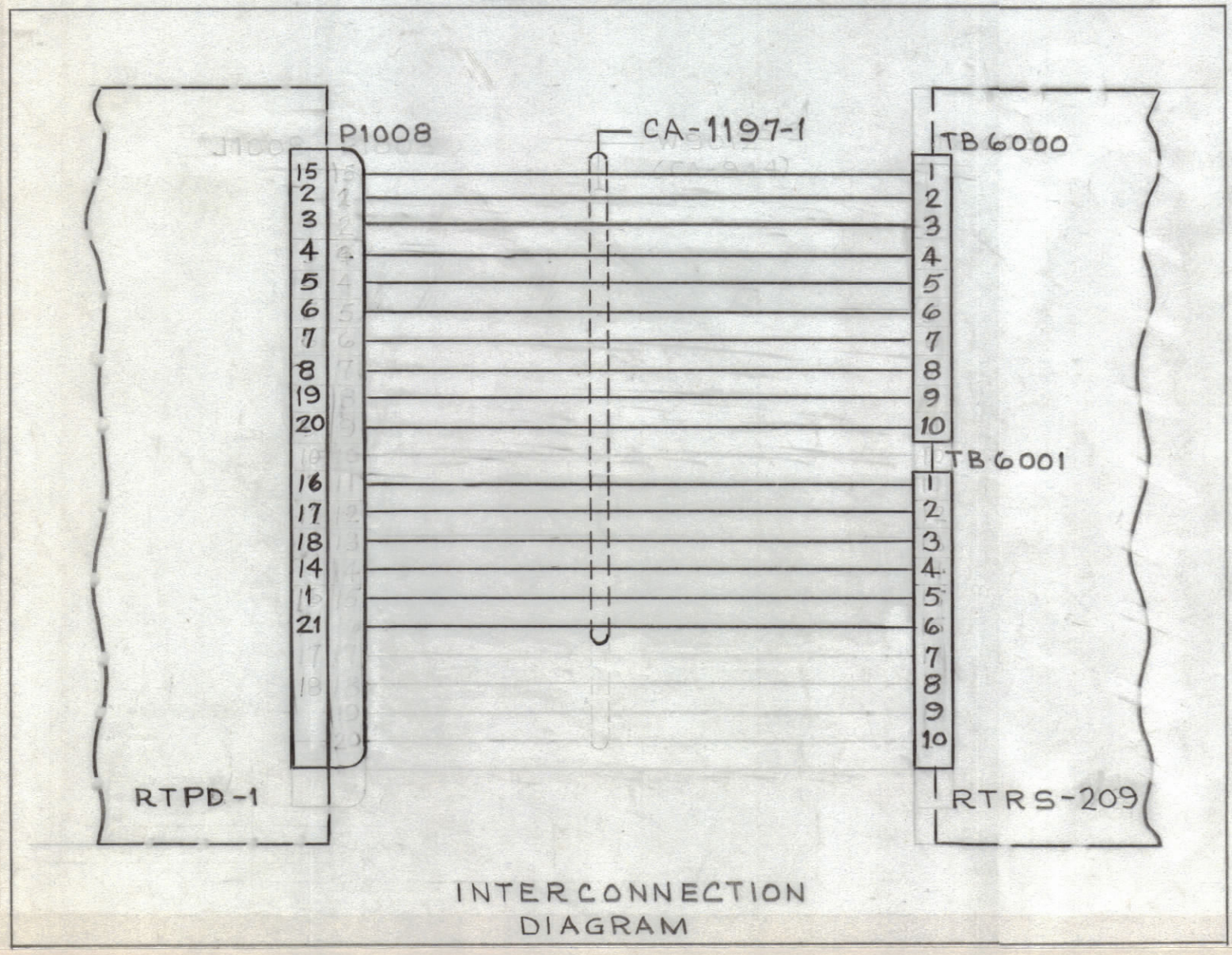
FRONT VIEW

RIGHT SIDE VIEW

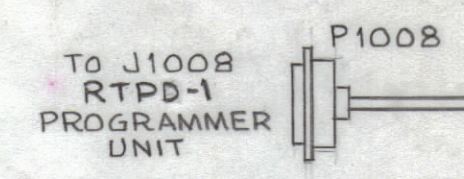
REAR VIEW



DETAIL A



INTERCONNECTION DIAGRAM



CA-1197-1 SUPPLIED

NOTE 1. THE RTRS-209 AND RTPD-1 MUST BE COLLOCATED WITH THE RTRS-209 DIRECTLY BELOW THE RTPD-1 FOR OPERATORS CONVENIENCE AND DUE TO LENGTH OF INTERCONNECTING CABLE.

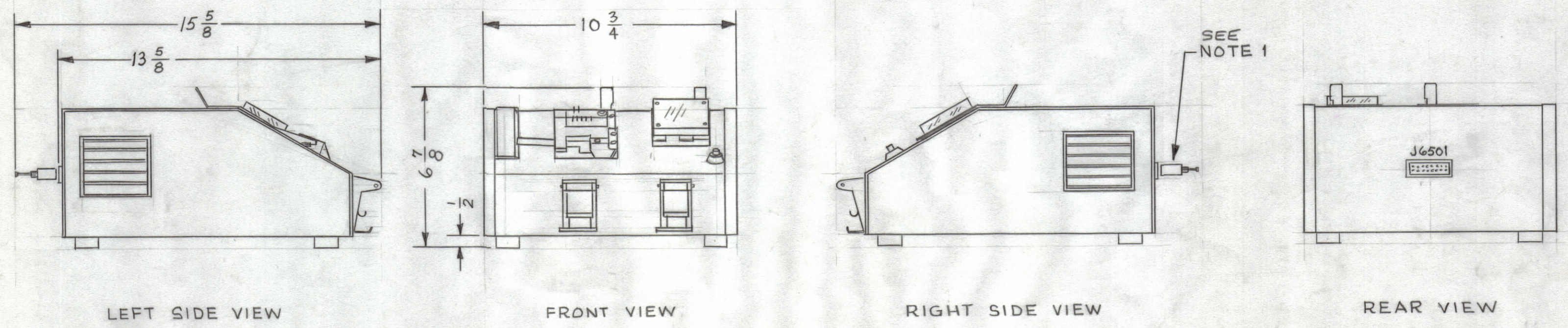
2. SEE SHEET 6 FOR INSTALLATION MATERIAL LIST.

TECHNICAL DATA
 RECEIVES OPERATING VOLTAGES FOR INDICATOR LIGHTS FROM ASSOCIATED PROGRAMER
 HEAT DISSIPATION - NEGLIGIBLE
 AMBIENT TEMPERATURE RANGE -0°C TO 50°C
 RELATIVE HUMIDITY - 0% TO 90%
 WEIGHT - 8LBS

QTY REQ	ITEM	PART NO.	DESCRIPTION	SYMBOL
BILL OF MATERIAL				
UNLESS OTHERWISE SPECIFIED DIMENSIONS ARE IN INCHES TOLERANCES ON FRACTIONS DECIMALS ANGLES ±1/64 ±.005 ±1/2°			THE TECHNICAL MATERIEL CORP. MAMARONECK, NEW YORK	
FINAL APPROVAL <i>F. C. Crator</i> 5/13/65 MECH. DES. DATE			REMOTE TUNING CONTROL GROUP SELECTOR, RECEIVER, MODEL RTRS-209	
ELECT. DES. <i>J. Edmundo</i> 5-13-65 DATE				
CHECKED <i>W. J. Johnson</i> 5-13-65 DATE				
DRAWN M TANTILLO 5-2-65 DATE				
MATERIAL			CODE 82679 C DWG. NO. ID-327 ISSUE C	
FINISH			SCALE NONE SHEET 3 OF 6	
APPROVED FOR BUSHIPS			CONTRACT NO. N600(63133-11-126)63002	

MAXIMUM ALLOWABLE TOLERANCES HAVE BEEN DETERMINED AND ANY DEVIATIONS WILL BE CAUSE FOR REJECTION.

REVISIONS						
SYM	ZONE	DESCRIPTION	DATE	E.M.N. NO.	DRAFT	CHKD APPD
A		REVISED	9/27/65		MJT	
B	B6	NOTE 1: CA-1196-1 WAS CA-973	1/17/66	H	MJT	
C		NOTE 3 ADDED; SEE SHEETS 1, 2, 3.	5.23.66	16287	WFO	JOB



TECHNICAL DATA
 POWER INPUT - 50 WATTS (NOTE 3)
 VOLTAGE - 115 VAC
 PHASE - 1 Ø
 FREQUENCY - 60 CPS
 HEAT DISSIPATION - 50 WATTS - 170 BTU/HR
 AMBIENT TEMP RANGE - 20° TO 45°
 RELATIVE HUMIDITY - 20 TO 90%
 WEIGHT - 22 lbs.

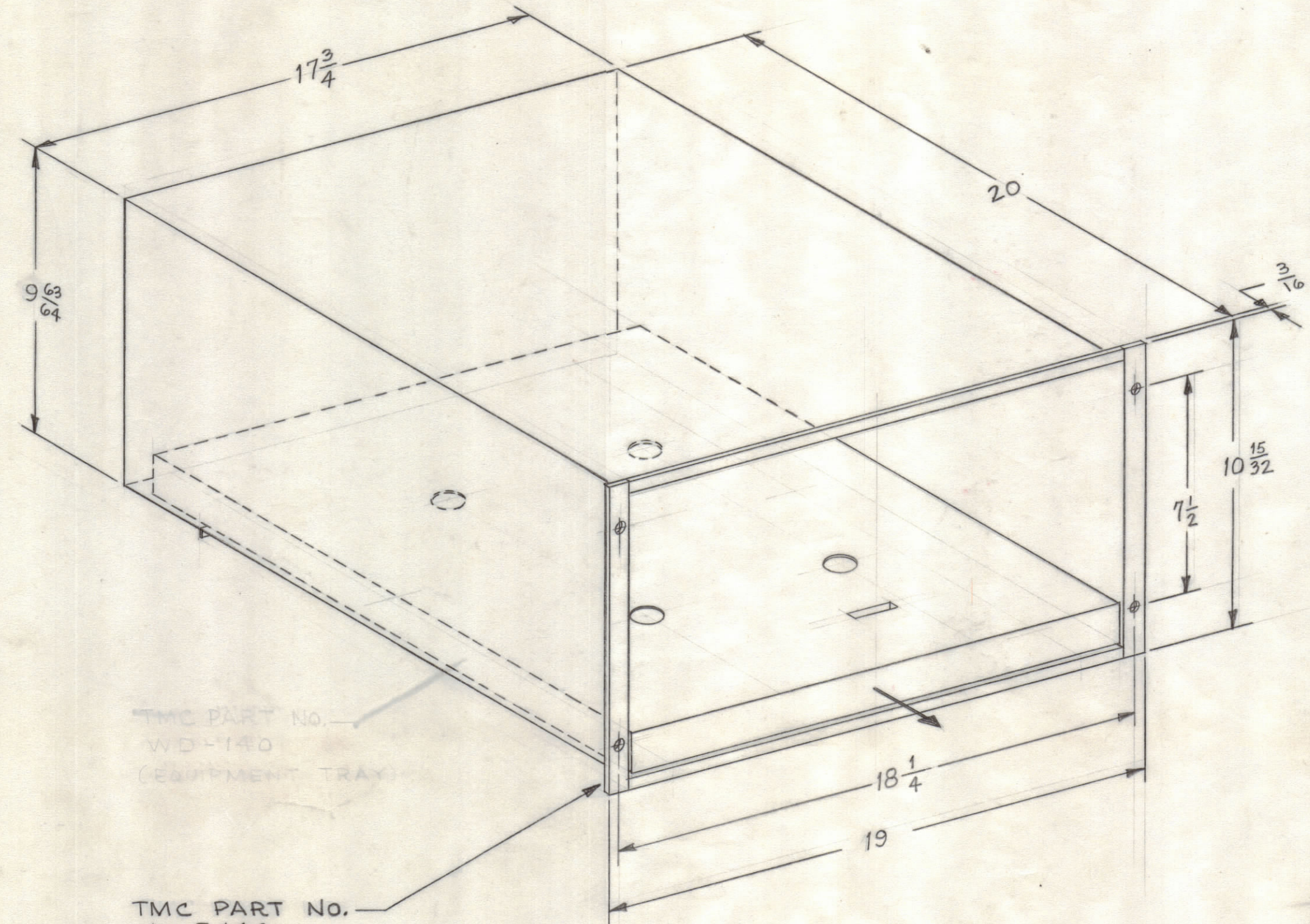
- NOTE 1. PLUG PART OF CA-1196-1
 2. THIS REQUIRES TABLE FOR MOUNTING BUT HAS CABLE FLEXIBILITY FOR RETRACTING (12) INCHES. FOR RACK MOUNTING SEE SHEET 5. FOR DETAILS.
 3. OBTAINS ITS OPERATING POWER THROUGH CA1196-1 FROM ASSOCIATED RTPD-1

MAXIMUM ALLOWABLE TOLERANCES HAVE BEEN DETERMINED AND ANY DEVIATIONS WILL BE CAUSE FOR REJECTION.

QTY REQ	ITEM	PART NO.	DESCRIPTION	SYMBOL
BILL OF MATERIAL				
UNLESS OTHERWISE SPECIFIED DIMENSIONS ARE IN INCHES TOLERANCES ON FRACTIONS DECIMALS ANGLES ±1/64 ±.005 ±1/2°			THE TECHNICAL MATERIEL CORP. MAMARONECK, NEW YORK	
MATERIAL			REMOTE TUNING CONTROL GROUP	
FINISH			PERFORATOR-READER, TT-477/FRR-72	
APPROVED FOR BUSHIPS			CODE	SIZE
CONTRACT NO. N600(63133-11-126)63002			82679	C
			DWG. NO.	ISSUE
			ID-327	C
			SCALE NONE	SHEET 4 OF 6

FINAL APPROVAL <i>J.E. Egan</i>	DATE 5/13/65
MECH. DES.	DATE
ELECT. DES. <i>J.E. Egan</i>	DATE 5-13-65
CHECKED <i>M. T. Tillo</i>	DATE 5-13-65
DRAWN M. TANTILLO	DATE 5-4-65

REVISIONS						
SYM	ZONE	DESCRIPTION	DATE	E.M.N.NO.	DRAFT	CHKD
X1	C6	PART NO. AND DISCRPTION CORRECTED WAS WD-140 & A-4010 IN ERROR.	12/30/65	-	MJ	T
A		REVISED	5.23.66	-	WFO	
B		SEE SHEETS 1,3 & 4 OF 6	5.23.66	-	WFO	
C		SEE SHEETS 1,2,3, & 4	5.23.66	16287	WFO	JCF



NOTE:
 1. THIS TYPE OF SHELF IS RECOMMENDED FOR RACK MOUNTING BUT IS NOT SUPPLIED.

TMC PART NO. WD-140 (EQUIPMENT TRAY)
 TMC PART NO. A-5414
 CONSISTING OF: SLIDES, TK 123-1 AND EQUIPMENT TRAY, WD-140

MAXIMUM ALLOWABLE TOLERANCES HAVE BEEN DETERMINED AND ANY DEVIATIONS WILL BE CAUSE FOR REJECTION.

QTY REQ	ITEM	PART NO.	DESCRIPTION	SYMBOL
BILL OF MATERIAL				
UNLESS OTHERWISE SPECIFIED DIMENSIONS ARE IN INCHES TOLERANCES ON FRACTIONS DECIMALS ANGLES ±1/64 ±.005 ±1/2°		FINAL APPROVAL <i>[Signature]</i> MECH. DES. DATE 3/4/66 ELECT. DES. DATE CHECKED DATE DRAWN M TANTILLO DATE 7/22/65	THE TECHNICAL MATERIEL CORP. MAMARONECK, NEW YORK MODEL RTKY SHELF, RACK MOUNTING FOR	
MATERIAL		APPROVED FOR BUSHIPS	CODE 82679	SIZE C
FINISH		CONTRACT NO. N600(63133-11-126)63002	DWG. NO. ID-327	ISSUE C
			SCALE NONE	SHEET 5 OF 6

REVISIONS						
SYM	ZONE	DESCRIPTION	DATE	E.M.N. NO.	DRAFT	CHKD. APPD.
X1	F7	ITEM 10 PART NO. CORRECTED WAS A-4010, IN ERROR	12/30/65	-	MJT	
X2		ITEM 5 PART NO. WAS CA-973 ITEM 6 PART NO. WAS CA-1145-3	1/17/66	-	MJT	
A		REVISED	5/22/66	-	WUW	
B		SEE SHEETS 1, 3 & 4 OF 6	5/22/66	-	WUW	
C		SEE SHEETS 1, 2, 3, & 4	5/22/66	16287	WUW	

INSTALLATION MATERIAL LIST				
PC NO.	QTY	DESCRIPTION	NAVY OR COML DESIG	FURNISHED BY (GFE OR CFM)
-	1	REMOTE TUNING CONTROL GROUP CONSISTS OF:		CFM
1	1	PROGRAMMER, ELECTRONIC	MX-615	CFM
2	1	SELECTOR, RECEIVER	RTRS-209	CFM
3	1	PERFORATOR-READER	TT-477/FRR-72	CFM
4	1	POWER CABLE, AC	CA-355	CFM
5	1	CABLE INTERCONNECT	CA-1196-1	CFM
6	1	CABLE INTERCONNECT	CA-1197-1	CFM
7	8	SCREW, MACHINE 10-32	SCB1032BN8	CFM
8	8	WASHER, FIBER, FLAT	WA-101-5	CFM
9	1	PLUG		
10	1	SHELF, RACK MOUNTING (SIMILIAR TO TMC TYPE)	A-5414	GFE

QTY REQ	ITEM	PART NO.	DESCRIPTION	SYMBOL
BILL OF MATERIAL				
UNLESS OTHERWISE SPECIFIED DIMENSIONS ARE IN INCHES TOLERANCES ON FRACTIONS DECIMALS ANGLES ±1/64 ±.005 ±1/2°			THE TECHNICAL MATERIEL CORP. MAMARONECK, NEW YORK	
MATERIAL			REMOTE TUNING CONTROL GROUP	
FINISH			CODE 82679	
CONTRACT NO.			SIZE C	
			DWG. NO. ID-327	
			ISSUE C	
			SCALE	
			SHEET 6 OF 6	

MAXIMUM ALLOWABLE TOLERANCES HAVE BEEN DETERMINED AND ANY DEVIATIONS WILL BE CAUSE FOR REJECTION.