

5

4

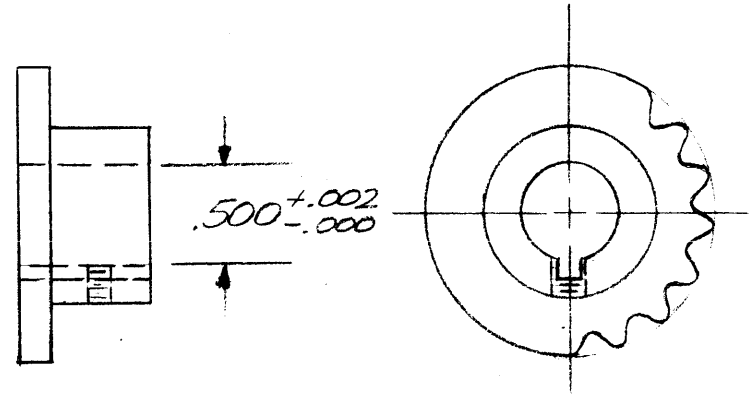
3

2

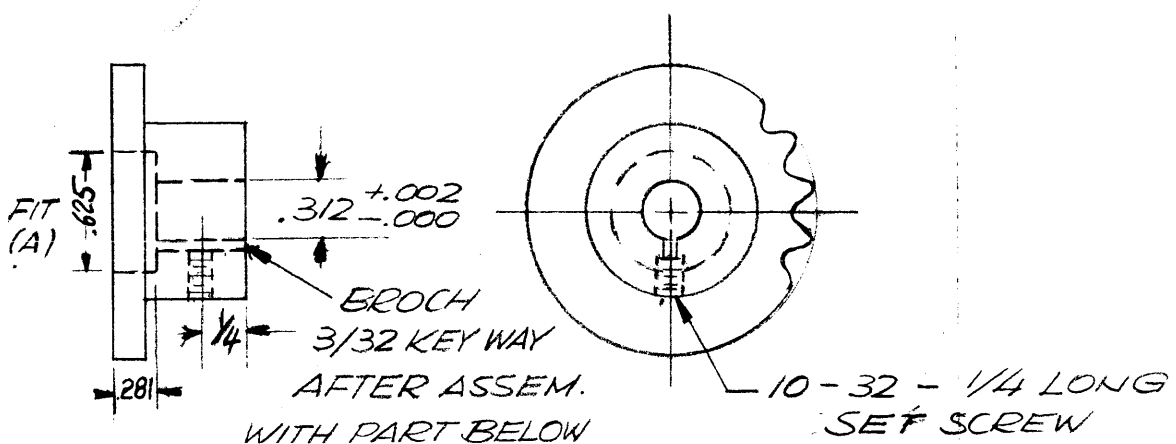
1

REVISIONS

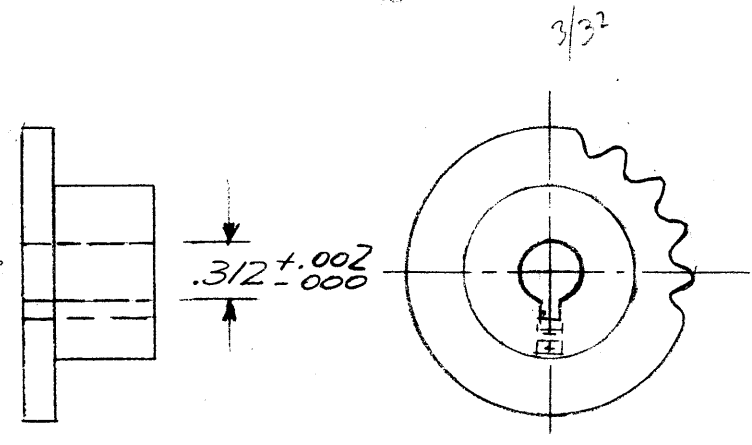
ZONE	LTR	DESCRIPTION	DATE	E.M.N.NO	DRAFI	CHKD	APPD
	Ø	ORIG REL FOR PROD	11/3/67	H	GE		JDE



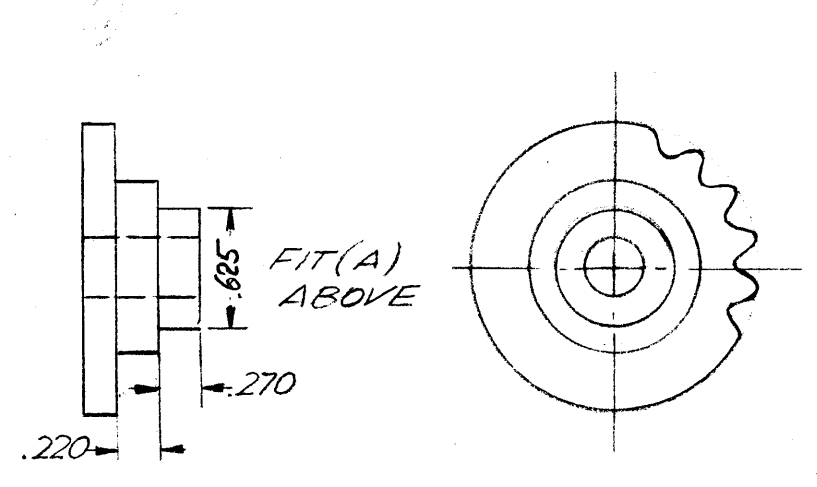
BORE HOLE TO .500^{+.002}/_{-.000} BROCH 1/8 KEYWAY
-4



BROCH 3/32 KEYWAY AFTER ASSEM. WITH PART BELOW
10-32 - 1/4 LONG SET SCREW
-2



BROCH FOR 3/32 KEY-WAY
-3



FIT(A) ABOVE
-1

NOTE:
USE S401-15 (# K 2517)

QTY / UNIT	MODEL USED ON	ASS'Y NO.
-4	2	SPT 3KVHF AX8080, AX8081
-3	4	SPT 3KVHF AX8080, AX8081
-2	2	SPT 3KVHF AX8080, AX8081
-1	2	SPT 3KVHF AX8080, AX8081

APPLICATION	
CODE	

NOTICE TO PERSONS RECEIVING THIS DRAWING
THE TECHNICAL MATERIEL CORPORATION claims proprietary right in the material disclosed hereon. This drawing is issued in confidence for engineering information only and may not be reproduced or used to manufacture anything shown hereon without permission from THE TECHNICAL MATERIEL CORPORATION to the user. This drawing is loaned for mutual assistance and is subject to recall at any time.

UNLESS OTHERWISE SPECIFIED DIMENSIONS ARE IN INCHES AND INCLUDE CHEMICALLY APPLIED OR PLATED FINISHES

DECIMALS	FRACTIONS
.X ± .05	1/64
.XX ± .01	TOLS. ANGLES
.XXX ± .005	0° - 30'

MATERIAL PURCHASE

FINISH

REQ'D	ITEM	PART NUMBER	DESCRIPTION	SYM.
LIST OF MATERIAL				
FINAL APPROVAL		DATE	THE TECHNICAL MATERIEL CORP. MAMARONECK, NEW YORK	
MECH. DES.		DATE		
ELECT. DES.		DATE	SPROCKET WHEEL	
CHECKED		DATE		
DRAWN		DATE	SIZE B CODE IDENT. NO. 82679 DWG NO. GR8001 ISSUE	
C GROB		10/25/68		
SCALE			SHEET 1 OF 1	