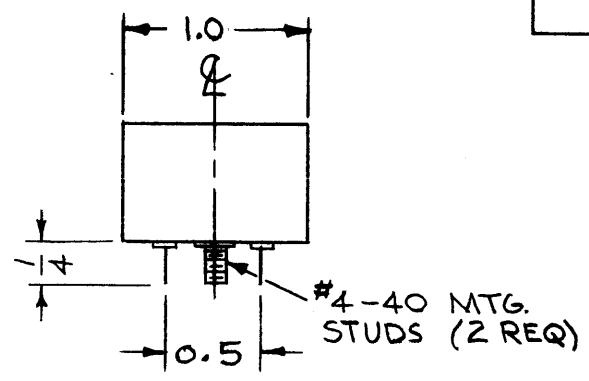
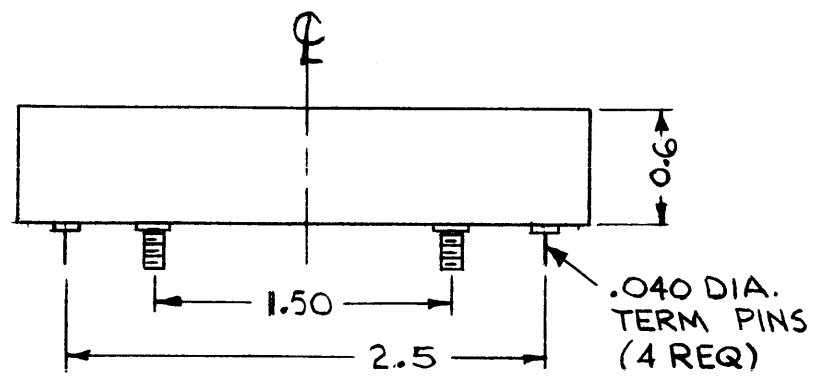


LETTERING APPROX. SIZE SHOWN, BLACK GOTHIC.



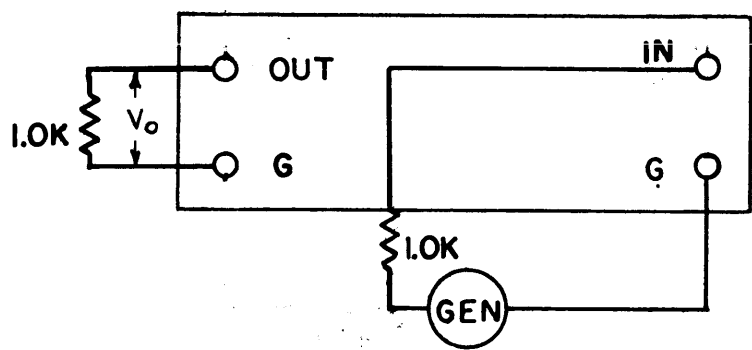
FX268 B

REVISIONS					
SYM	DESCRIPTION	DATE	E.M.N. NO.	DRAFT	CHKD
X	EXPERIMENTAL RELEASE	10/12/66	X	RME	[Signature]
Ø	ORIGINAL RELEASE FOR PROD	10/24/66	Ø	RME	[Signature]
A	CHG'D TEST DIAGRAM, INSERTION LOSS WAS 60dB	11/2/66	1717.4	RME	[Signature]
B	94KHZ DEL FROM FILTER, GRAPH DEL, SPECS REV.	6.22.67	18293	LWJ	[Signature]

SPECIFICATIONS

ELECTRICAL:
 SOURCE & LOAD IMPEDANCE: 1.0 K
 TEMP. RANGE: 0° TO 70°C
 TYPE: BANDPASS
 ALL dB MEASUREMENTS ARE RELATIVE TO MAX SIGNAL RESPONSE IN THE PASSBAND
 C.F.: 3.0 MHz
 -1 dB POINTS: 2.993 MHz MAX, 3.007 MHz MIN
 -60 dB POINTS: 2.75 MHz MIN, 3.25 MHz MAX
 RIPPLE: ± .5 dB MAX BETWEEN -1dB POINTS
 INSERTION LOSS: 10 dB MAX

MECHANICAL:
 CASE: STEEL, HERMETICALLY SEALED
 FINISH: POWDER BLASTED BRIGHT NICKEL
 MOUNTING: 4-40 x 1/4" STUDS (2 REQ)
 TERMINAL: DOUBLE END PIN TYPE, SILVER PLATED, BEAD INSULATION



INSERTION (LOSS OR GAIN) ±(V1 - V0) IN dB

NOTICE TO PERSONS RECEIVING THIS DRAWING

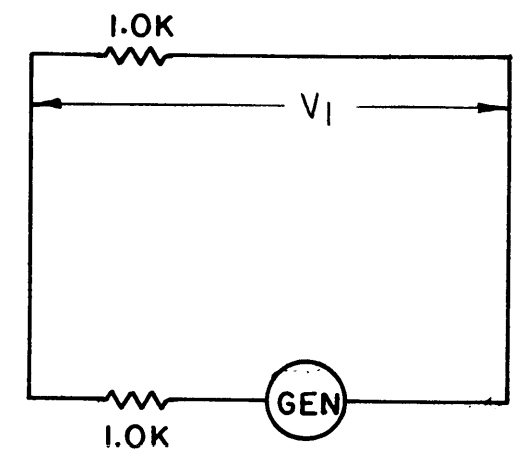
THE TECHNICAL MATERIEL CORPORATION claims proprietary right in the material disclosed hereon. This drawing is issued in confidence for engineering information only and may not be reproduced or used to manufacture anything shown hereon without permission from THE TECHNICAL MATERIEL CORPORATION to the user. This drawing is loaned for mutual assistance and is subject to recall at any time.

Property of:
 THE TECHNICAL MATERIEL CORPORATION
 MAMARONECK, NEW YORK

MMX-1		ASS'Y. NO.
Q'TY./UNIT	MODEL USED ON	
SCALE	CODE	S401-308 ()

THE CONTENTS OF THIS DRAWING ARE THE EXCLUSIVE PROPERTY OF THE TECHNICAL MATERIEL CORP. ITS UNAUTHORIZED USE OR REPRODUCTION IN WHOLE OR IN PART IS STRICTLY FORBIDDEN.

REQ'D.	ITEM	PART NUMBER	DESCRIPTION	SYMBOL
LIST OF MATERIAL				
MATERIAL		THE TECHNICAL MATERIEL CORP. MAMARONECK, NEW YORK		
FINISH		TITLE FILTER BANDPASS 3.0 MHz SYMMETRICAL		
UNLESS OTHERWISE SPECIFIED DIMENSIONS ARE IN INCHES AND INCLUDE CHEMICALLY APPLIED OR PLATED FINISHES		DRAWN RME	DATE 10/12/66	FINAL APPROVAL [Signature]
DECIMALS .X ± .05 .XX ± .01 .XXX ± .005		CHECKED [Signature]	DATE 10/13/66	DATE
FRACTIONS ± 1/64 ANGLES ± 0° 30'		ELECT. DES. [Signature]	DATE 10/12/66	FX268
TOLERANCES		MECH. DES.	DATE	B
				REV. LTR.



NOTES