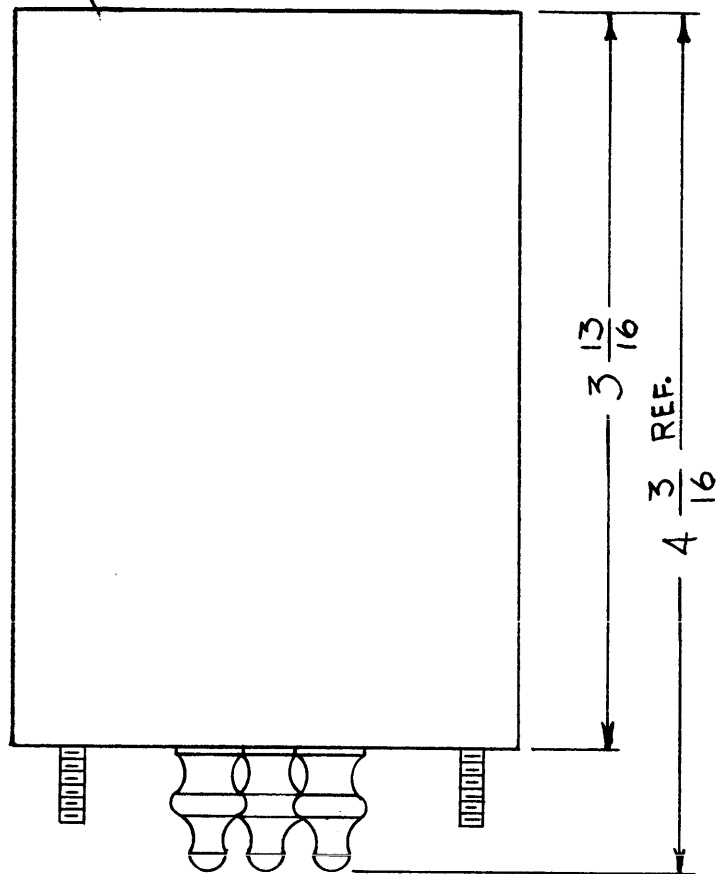
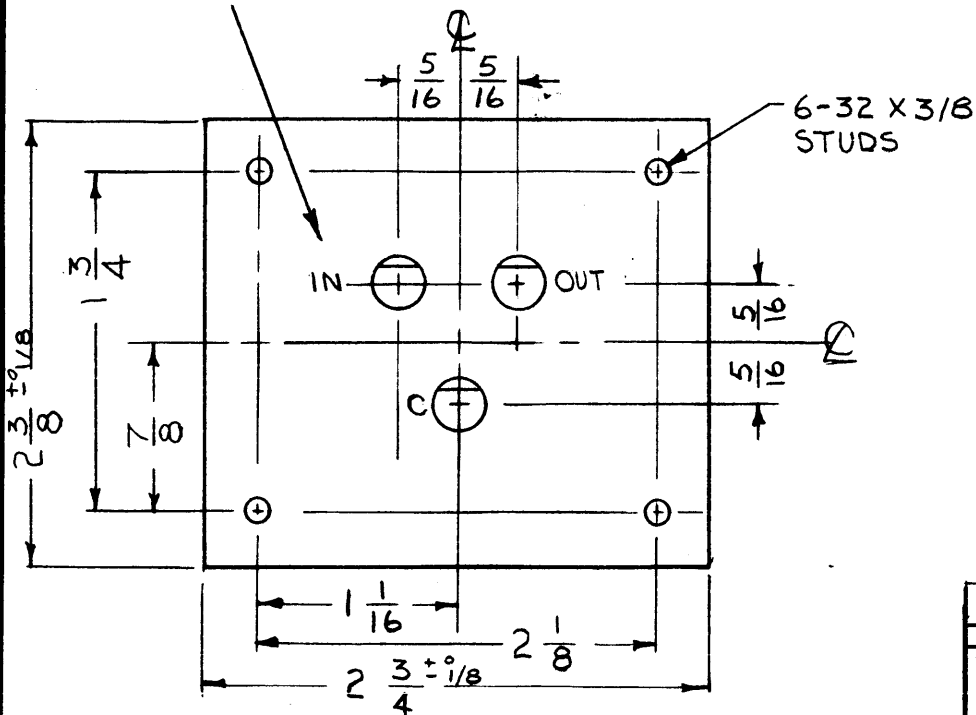


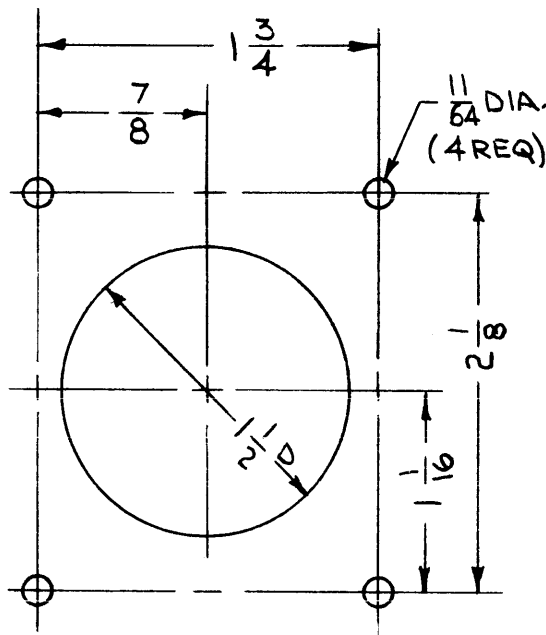
MARK TMC PART/NO.  
1/8 HIGH W/LATEST  
REVISION LETTER



TERMINAL IDENTIFICATION TO BE  
MAINTAINED WITHIN 1-1/2 DIA CIRCLE  
LETTERING TO BE 1/8 HIGH.

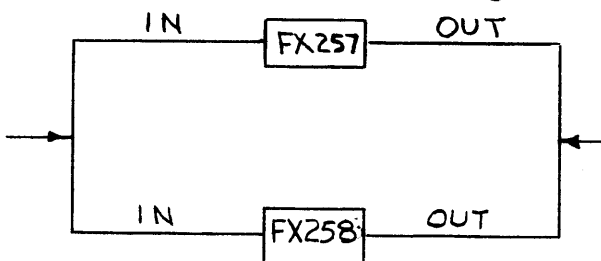


NOTES



MOUNTING DETAIL

SHALL BE CAPABLE OF  
OPERATING AS FOLLOWS



WITH NO DETERIORATION  
OF ITS CHARACTERISTICS.

FX257

REVISIONS

SYM	DESCRIPTION	DATE	E.M.N. NO.	DRAFT	CHKD	APPD
X	EXPERIMENTAL RELEASE	9-28-66	X	RME		
Ø	ORIGINAL RELEASE FOR PRODUCTION	9-8-67	Ø	RG		

SPECIFICATIONS

FILTER, BANDPASS, CENTERED ON 1575 CPS  
FLAT WITHIN 3 DB TO ±100 CPS DOWN NOT LESS THAN 40 DB AT ±340 CPS.  
INSERTION LOSS 6 DB,

INPUT AND OUTPUT IMPEDANCE: 600 OHMS

TERMINALS: SHALL BE STEATITE BODY, TINNED LUGS, AND NEOPRENE GLAND  
HERMETICALLY SEALED. (TE134 OR EQUAL)

CASE: SHALL BE MADE OF COLD ROLLED STEEL, ELECTRO TINNED

FINISH: SHALL BE GRAY, TMC SPECIFICATION §115 THE STUDS AND  
TERMINALS SHALL BE FREE OF PAINT

LETTERING: SHALL BE 1/8 HIGH GOTHIC CHARACTERS AND SHALL BE COATED  
WITH CLEAR FUNGICIDAL LACQUER, EXCEPT METAL STAMPING

UNIT SHALL BE HERMETICALLY SEALED

REQ'D.	ITEM	PART NUMBER	DESCRIPTION	SYMBOL
--------	------	-------------	-------------	--------

LIST OF MATERIAL

MATERIAL	THE TECHNICAL MATERIEL CORP. MAMARONECK, NEW YORK			
FINISH	TITLE FILTER; BANDPASS 1575 CPS RECEIVING			

UNLESS OTHERWISE SPECIFIED DIMENSIONS ARE IN INCHES AND INCLUDE CHEMICALLY APPLIED OR PLATED FINISHES		DRAWN RME	DATE 9-28-66	FINAL APPROVAL SAM	DATE 10/11/67
DECIMALS .X ± .05 .XX ± .01 .XXX ± .005	TOLERANCES	CHECKED [Signature]	DATE	ELECT. DES. [Signature]	DATE
FRACTI NS ± 1/64 ANGLES ± 0° 30'		MECH. DES.	DATE	FX 257	Ø
				SHEET	REV. LTR.

SFP-3		ASS'Y. NO.
Q'TY./UNIT	MODEL USED ON	
SCALE	CODE	S401-308

THE CONTENTS OF THIS DRAWING ARE THE EXCLUSIVE PROPERTY  
OF THE TECHNICAL MATERIEL CORP. ITS UNAUTHORIZED USE OR  
REPRODUCTION IN WHOLE OR IN PART IS STRICTLY FORBIDDEN.