

A  
FX 238

| REVISIONS |                                 |         |            |       |           |
|-----------|---------------------------------|---------|------------|-------|-----------|
| SYM       | DESCRIPTION                     | DATE    | E.M.N. NO. | DRAFT | CHKD APPD |
| X1        | GRAPH & SPECS CLARIFIED         | 5/16/66 | X1         | JSD   | JSD       |
| Ø         | ORIGINAL RELEASE FOR PRODUCTION | 5/17/66 | Ø          | CV    | JSD       |
| A         | "OR GLASS" ADDED TO TERMS       | 9.30.66 | 16923      | WPS   | JSD       |

**ELECTRICAL SPECIFICATIONS:**

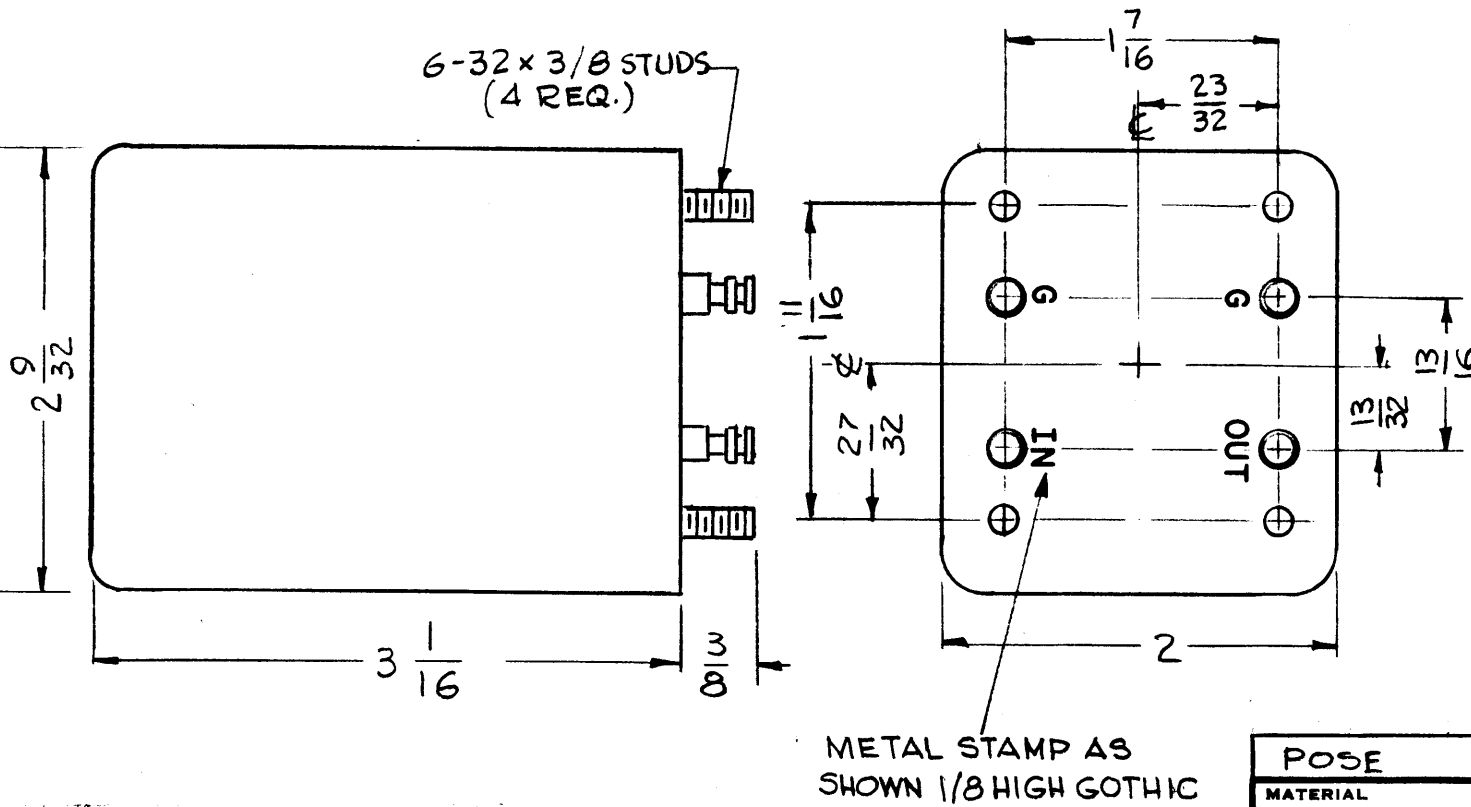
1. TYPE: UPPER SIDEBAND
2. DB MEASUREMENTS: ALL DB MEASUREMENTS ARE RELATIVE TO MAXIMUM SIGNAL RESPONSE IN THE PASS BAND.
3. CARRIER FREQUENCY: 250.000 KCS.
4. CARRIER SUPPRESSION: AT LEAST 55DB.
5. -1DB POINTS: NOT HIGHER THAN 250.250 & NOT LOWER THAN 253.040
6. -60DB POINTS: 250.000 KCS MINIMUM AND 253.250 KCS MAX.
7. INSERTION LOSS ~~1.0DB MAXIMUM~~
8. INPUT IMPEDANCE: 10K OHMS UNBALANCED.
9. OUTPUT IMPEDANCE: 10K OHMS UNBALANCED.
10. PASS BAND RESPONSE VS. TEMPERATURE:
  - ±0.5db FROM +15°C TO +55°C
  - ±1.5db FROM -30°C TO +15°C
  - ±3.0db FROM -40°C TO -30°C

NOTE: CHANNEL DESIGNATION REFERS TO 250.000 KCS FURTHER SIDEBAND INVERSIONS MUST BE TAKEN INTO ACCOUNT IN DETERMINING THE FINAL CHANNEL DESIGNATION.

**MECHANICAL SPECIFICATIONS:**

CASE: STEEL  
 FINISH: TMC GRAY (S-115) OR POWDER BLASTED BRIGHT NICKEL  
 NOTE: TERMINAL END UNPAINTED  
 MOUNTING: 6-32 X 3/8 STUDS (4 required)  
 TERMINAL: DOUBLE END PIN TYPE, BRASS, SILVER PLATED, TEFLON OR GLASS INSULATED

FX 238  
 UPPER SIDEBAND  
 FILTER  
 THE TECHNICAL MATERIEL  
 CORPORATION  
 MAMARONECK NEW YORK



MARKING PROCESS: AS PER TMC SPECIFICATION S-727.

|            |               |            |
|------------|---------------|------------|
| 1          | SBE-8         |            |
| Q'TY./UNIT | MODEL USED ON | ASS'Y. NO. |
| SCALE      | CODE          |            |
|            | C             |            |

THE CONTENTS OF THIS DRAWING ARE THE EXCLUSIVE PROPERTY OF THE TECHNICAL MATERIEL CORP. ITS UNAUTHORIZED USE OR REPRODUCTION IN WHOLE OR IN PART IS STRICTLY FORBIDDEN.

| POSE  |  | LIST OF MATERIAL                                     |                 |                                      |  |
|---|--|--|-----------------|--------------------------------------|--|
| MATERIAL  |  | THE TECHNICAL MATERIEL CORP.<br>MAMARONECK, NEW YORK |                 |                                      |  |
| FINISH  |  | TITLE<br>FILTER, BANDPASS<br>UPPER SIDEBAND -3KC-    |                 |                                      |  |
| UNLESS OTHERWISE SPECIFIED<br>DIMENSIONS ARE IN INCHES AND INCLUDE<br>CHEMICALLY APPLIED OR PLATED FINISHES |  | DRAWN<br>G.D.-L                                      | DATE<br>8-10-65 | FINAL APPROVAL<br><i>[Signature]</i> |  |
| DECIMALS<br>.X ± .05<br>.XX ± .01<br>.XXX ± .005  |  | CHECKED<br><i>[Signature]</i>                        | DATE            | DATE<br>5/18/66                      |  |
| FRACTIONS<br>± 1/64<br>ANGLES<br>± 0° 30'   |  | ELECT. DES.  | DATE            | DATE                                 |  |
| TOLERANCES  |  | MECH. DES.   | DATE            | DATE                                 |  |
|   |  | SHEET<br>FX 238                                      |                 | REV. LTR.<br>A                       |  |

**NOTES**