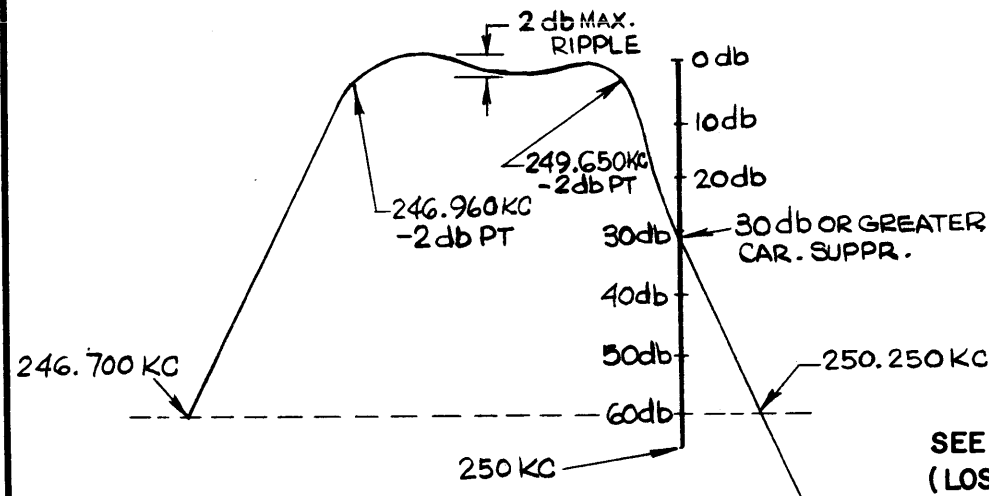
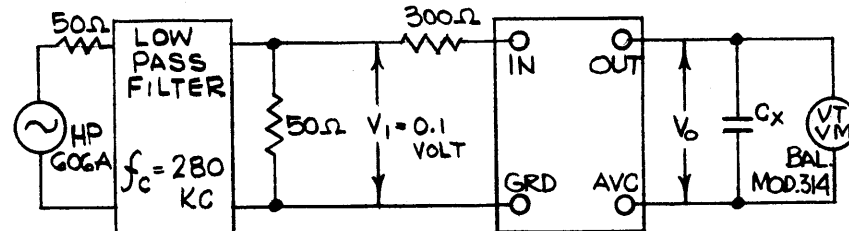


**ELECTRICAL SPECIFICATIONS**

1. TYPE: INNER LOWER SIDEBAND
2. DB MEASUREMENTS: ALL DB MEASUREMENTS ARE RELATIVE TO MAXIMUM SIGNAL RESPONSE IN PASSBAND.
3. CARRIER FREQUENCY: 250 KC
4. CARRIER SUPPRESSION: -30DB OR GREATER.
5. -2 DB POINTS: 249.650 KC OR GREATER, 246.960 KC OR LESS.
6. -60DB POINTS: 246.700 KC OR GREATER, 250.250 KC OR LESS.  
ALL RETURN LOBES AND SPURIOUS SHALL BE -60DB OR GREATER, OVER THE RANGE OF ±50KC FROM CARRIER FREQ.
7. MAX. PASSBAND RIPPLE: 2DB
8. INSERTION (LOSS OR GAIN): -3DB ±1DB
9. INPUT IMPEDANCE: 300 OHMS (NOMINAL)
10. OUTPUT IMPEDANCE: (NOT TO EXCEED 50K OHMS INTERNALLY TERMINATED)  $C_X = 10.5$  pf
11. D.C. RESISTANCE ACROSS OUTPUT: NOT TO EXCEED 5K OHMS
12. PASSBAND RESPONSE VS TEMPERATURE:  
±1.0 DB FROM +15°C TO +55°C  
±1.5 DB FROM -30°C TO +15°C  
±3.0DB FROM -40°C TO -30°C
13. ENVELOPE DELAY SHALL NOT EXCEED ±350 MICROSECONDS FROM NOMINAL OVER 80 PER CENT OF THE FILTER PASSBAND.

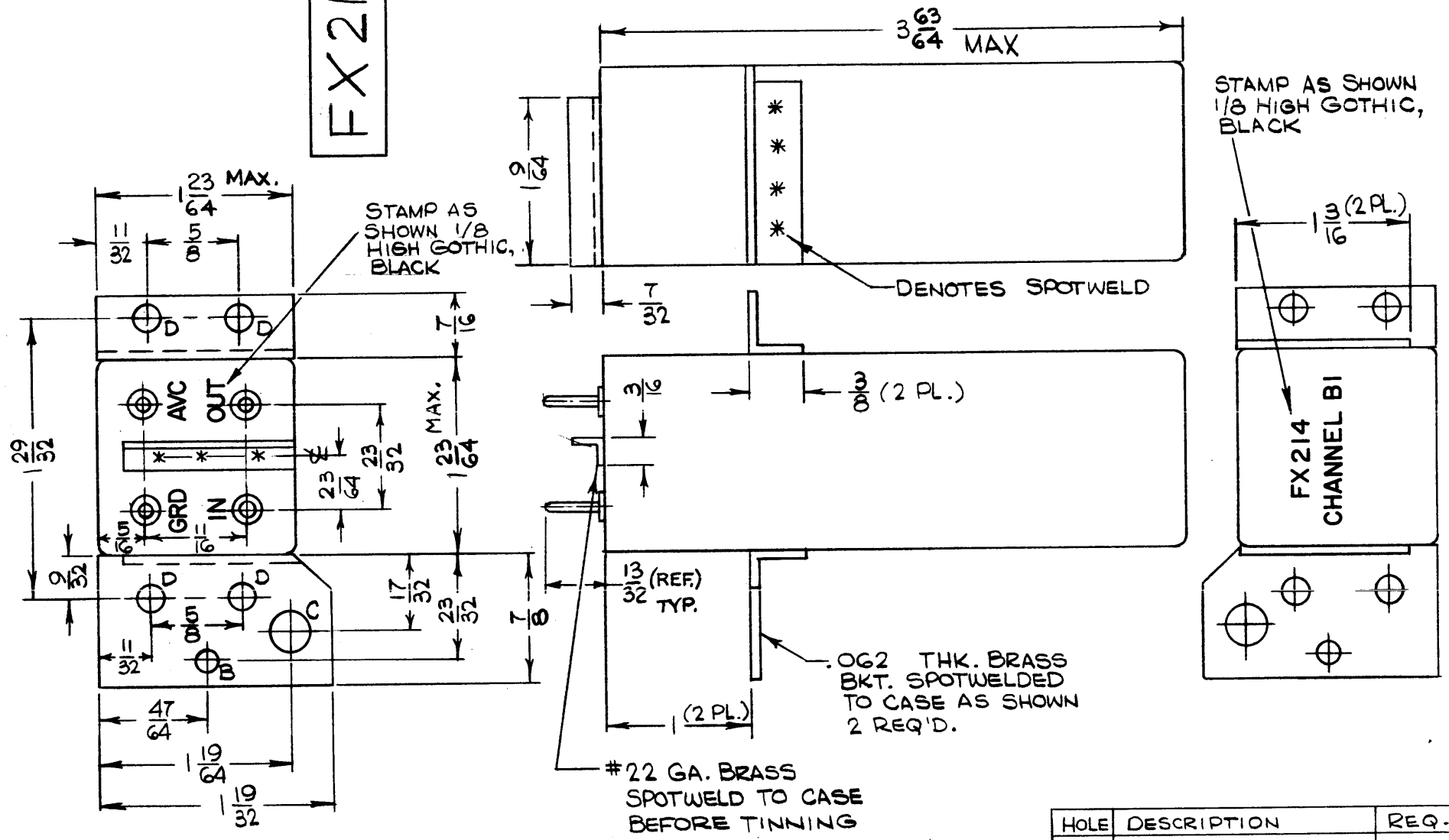


SEE TEST PROCEDURE S764. INSERTION (LOSS OR GAIN) =  $\pm(V_o - V_i)$  IN DB



EX214

REVISIONS						
SYM	DESCRIPTION	DATE	E.M.N. NO.	DRAFT	CHKD	APPD
Ø	ORIGINAL RELEASE FOR PRODUCTION	2/21/66				
A	REVISED PER EMN	6-23-66	16643			



NOTE: TERMINAL DIM. ARE REF.

HOLE	DESCRIPTION	REQ.
B	5/32 DIA.	1
C	9/32 DIA.	1
D	3/16 DIA	4

FINISH: MOUNTING BRACKETS DO NOT PAINT EDGES, TOP AND BOTTOM SURFACES OF MOUNTING BRACKETS.

**NOTES**

Q'TY./UNIT	MSAA-1	ASS'Y. NO.
SCALE	MODEL USED ON	
	CODE	
	C	
THE CONTENTS OF THIS DRAWING ARE THE EXCLUSIVE PROPERTY OF THE TECHNICAL MATERIEL CORP. ITS UNAUTHORIZED USE OR REPRODUCTION IN WHOLE OR IN PART IS STRICTLY FORBIDDEN.		

REQ'D.	ITEM	PART NUMBER	DESCRIPTION	SYMBOL
LIST OF MATERIAL				
MATERIAL		BRASS		
FINISH		HOT TIN DIP S115 TMC SMOOTH GREY ENAMEL - SEE MTG. BRKT. NOTE		
TITLE		THE TECHNICAL MATERIEL CORP. MAMARONECK, NEW YORK		
TITLE		FILTER CRYSTAL, ASYMMETRICAL INNER LOWER SIDEBAND		
DRAWN	H. AUSTIN	DATE	7-28-65	FINAL APPROVAL
CHECKED		DATE		
ELECT. DES.		DATE		
MECH. DES.		DATE		
UNLESS OTHERWISE SPECIFIED DIMENSIONS ARE IN INCHES AND INCLUDE CHEMICALLY APPLIED OR PLATED FINISHES		TOLERANCES		
DECIMALS		FRACTIONS		
.X ± .05		± 1/64		
.XX ± .01		ANGLES		
.XXX ± .005		± 0° 30'		
SHEET				REV. LTR.

FX.214 A