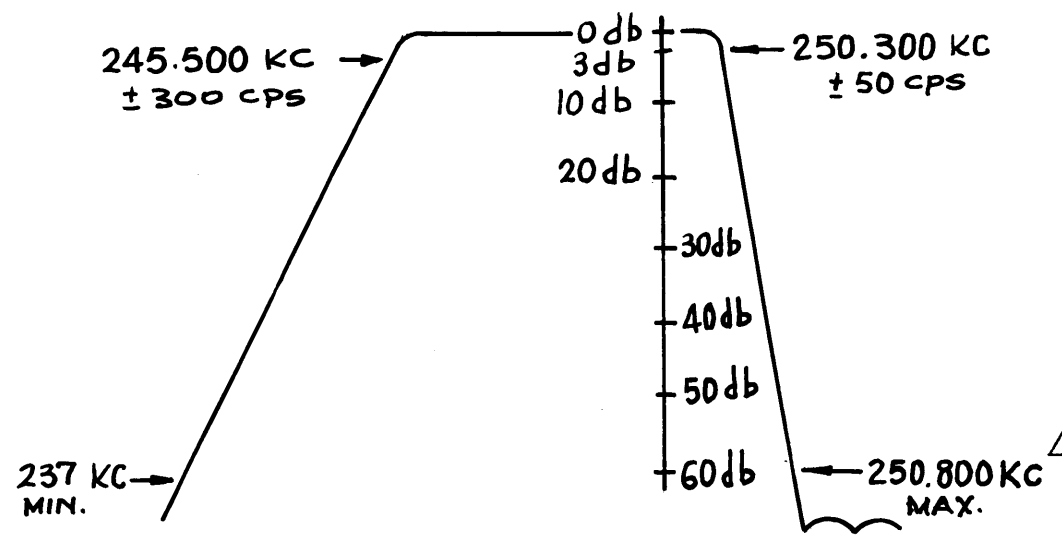
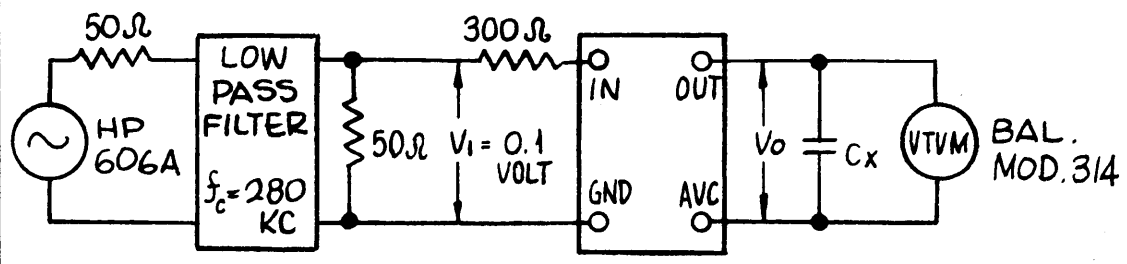


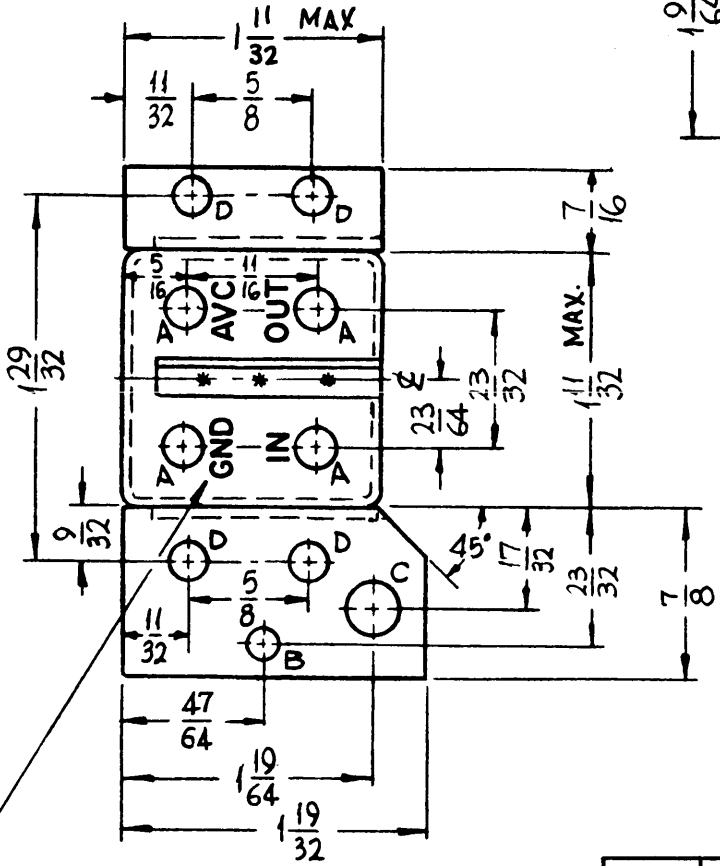
ELECTRICAL SPECIFICATIONS

1. TYPE: LOWER SIDEBAND
2. db MEASUREMENTS: ALL db MEASUREMENTS ARE RELATIVE TO MAX. SIGNAL RESPONSE IN PASSBAND.
3. CARRIER FREQ: SEE ATTEN. CHARACTERISTIC
4. CARRIER SUPP: SEE ATTEN. CHARACTERISTIC
5. -3db POINTS: 245,500 kc ± 300 cps -250,300 kc ± 50 cps
6. -60db POINTS: 237 kc MIN - 250,800 kc MAX
ALL RETURN LOBES AND SPURIOUS SHALL BE -60 db OR GREATER, OVER THE RANGE OF ±50KC FROM CARRIER FREQUENCY.
7. MAXIMUM PASSBAND RIPPLE: 2.5 db
8. INSERTION (LOSS OR GAIN): +3 db ± 1 db
9. INPUT IMPEDANCE: 300 OHMS (NOMINAL)
10. OUTPUT IMPEDANCE: NOT TO EXCEED 12.5K OHMS (INTERNALLY TERMINATED)
11. D.C. RESISTANCE ACROSS OUTPUT: NOT TO EXCEED 5K OHMS.
12. TEMP. RANGE: 0° TO 70°C

SEE TEST PROCEDURE INSERTION (LOSS OR GAIN) = ±(V₀ - V₁) IN DB



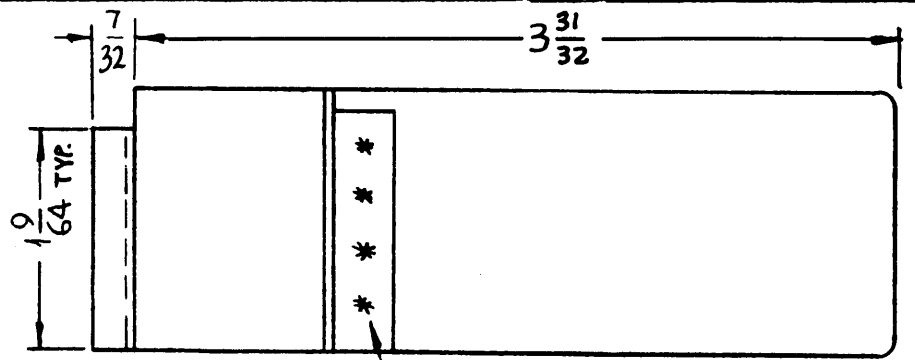
ATTENUATION CHARACTERISTICS



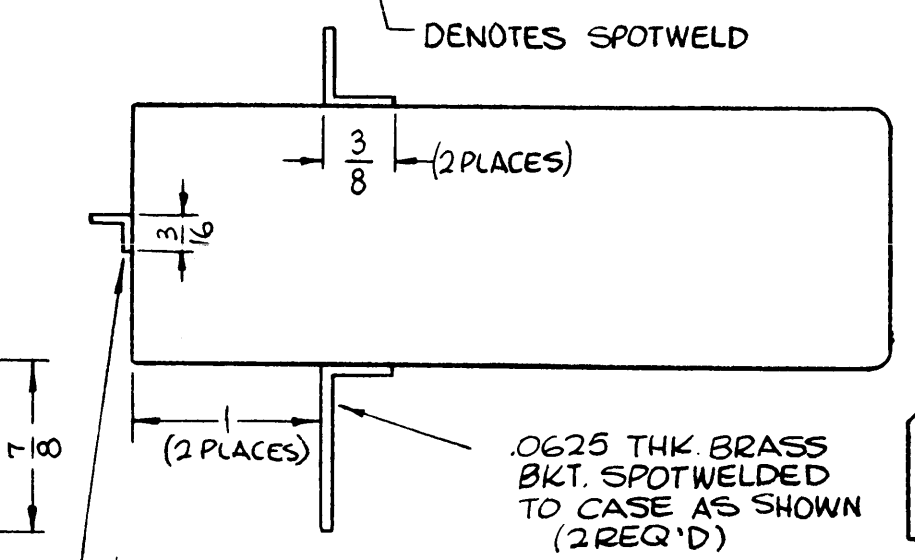
STAMP AS SHOWN
1/8 HIGH GOTHIC, BLACK.

| SYM | DESCRIPTION | DATE | E.M.N. NO. | DRAFT | CHKD | APPD |
|-----|-------------------------------------|----------|------------|-------|------|------|
| | | | | | | |
| X | EXPERIMENTAL RELEASE | 10-5-64 | X | SRG | | |
| Ø | ORIGINAL RELEASE FOR PRODUCTION | 10-15-64 | Ø | JRB | | |
| A | ADDED "OR BRUSHED NICKEL" TO FINISH | 8/25/66 | 16772 | CE D | JRB | JC |

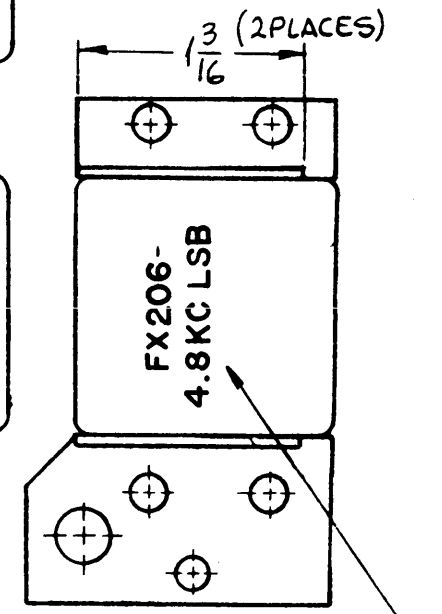
FX 206



| HOLE | DESCRIPTION | REQ. |
|------|-------------|------|
| A | .209 DIA. | 4 |
| B | 5/32 DIA. | 1 |
| C | 9/32 DIA. | 1 |
| D | 3/16 DIA. | 4 |



22 GA. BRASS SPOTWELD TO CASE BEFORE TINNING.



STAMP AS SHOWN
1/8 HIGH GOTHIC,
BLACK, W/LATEST
REV. LETTER

STANDARD DRAWING

FINISH ; MTG. BRACKETS:
DO NOT PAINT EDGES, TOP & BOTTOM SURFACES OF MTG. BRACKETS,

NOTES

| | | |
|------------|---------------|------------|
| KIT-193 | | |
| Q'TY./UNIT | MODEL USED ON | ASS'Y. NO. |
| SCALE 1:1 | CODE C | 3401-210 |

THE CONTENTS OF THIS DRAWING ARE THE EXCLUSIVE PROPERTY OF THE TECHNICAL MATERIEL CORP. ITS UNAUTHORIZED USE OR REPRODUCTION IN WHOLE OR IN PART IS STRICTLY FORBIDDEN.

| REQ'D. | ITEM | PART NUMBER | DESCRIPTION | SYMBOL |
|---|------|-------------------------|--|----------------------------|
| LIST OF MATERIAL | | | | |
| MATERIAL BRASS | | | THE TECHNICAL MATERIEL CORP. MAMARONECK, NEW YORK | |
| FINISH HOT TIN DIP, S115 TMC SMOOTH GRAY ENAMEL OR BRUSHED NICKEL SEE MOUNTING BRACKET NOTE | | | TITLE FILTER BAND PASS 4.8 KC BW 250 KC LSB | |
| UNLESS OTHERWISE SPECIFIED DIMENSIONS ARE IN INCHES AND INCLUDE CHEMICALLY APPLIED OR PLATED FINISHES | | DRAWN SRG | DATE 10-5-64 | FINAL APPROVAL [Signature] |
| DECIMALS X ± .05 .XX ± .01 .XXX ± .05 | | CHECKED @ | DATE 10-8-64 | |
| FRACTIONS ± 1/64 ANGLES ± 0° 30' | | ELECT. DES. [Signature] | DATE 10/15/64 | |
| TOLERANCES | | MECH. DES. [Signature] | DATE | |
| | | | SHEET | REV. LTR. |

FX 206

A