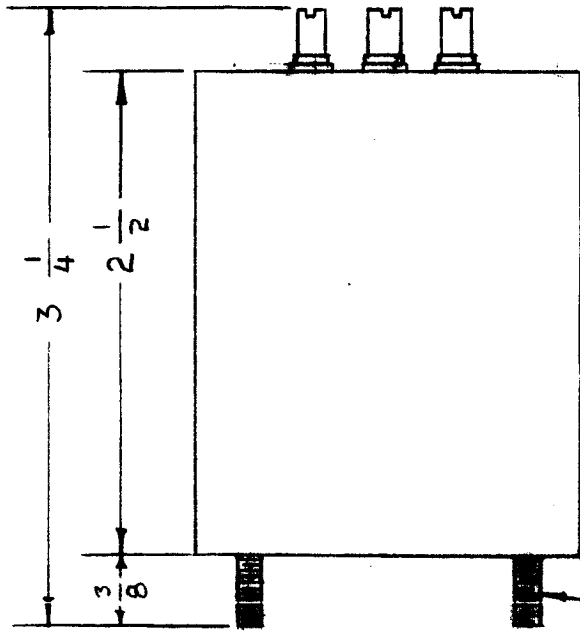


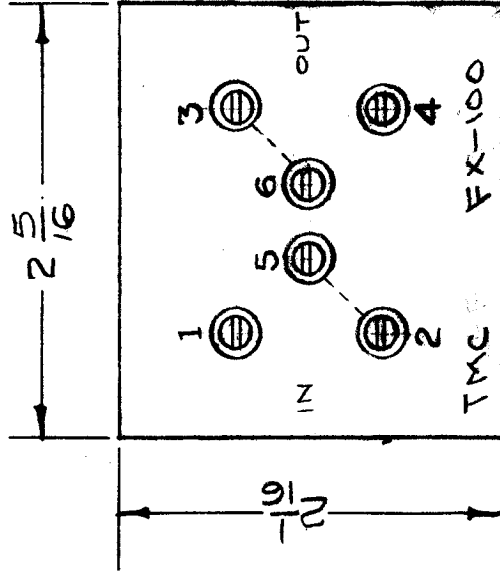
IF IT IS FOUND DESIRABLE TO CHANGE ANY TOLERANCE OR OTHER DETAIL SPECIFIED ON THIS DRAWING NOTIFY THE PURCHASER PROMPTLY.

MAXIMUM ALLOWABLE TOLERANCES HAVE BEEN DETERMINED AND DEVIATIONS WILL BE CAUSE FOR REJECTION. REMOVE ALL BURRS AND SHARP EDGES



6-32 STUDS
4 REQ'D

NOTE:
FOR TEST SPEC SEE S-187
S-188



STAMP AS SHOWN.
LETTERING 1/8 HIGH

- MECHANICAL SPEC.
1. CASE, STEEL.
2. TERMINALS, CERAMIC.
3. FILLER, COMPOUND.
4. FINISH, GREY.
5. STUDS 6-32 X 3/8 LG.
- ELECTRICAL SPEC.
1. 1800 CYCLE CARRIER
INPUT 1-2
OUTPUT 3-4
2. 1500 CYCLE CARRIER
1. PLACE JUMPER
BETWEEN 2-5
2. PLACE JUMPER
BETWEEN 3-6
INPUT-1-2
OUTPUT-3-4

FX-100

USED ON

MODEL	PROJECT NO.	ASSY. NO.	DATE
XFD-1	160	A-322	12-17-52

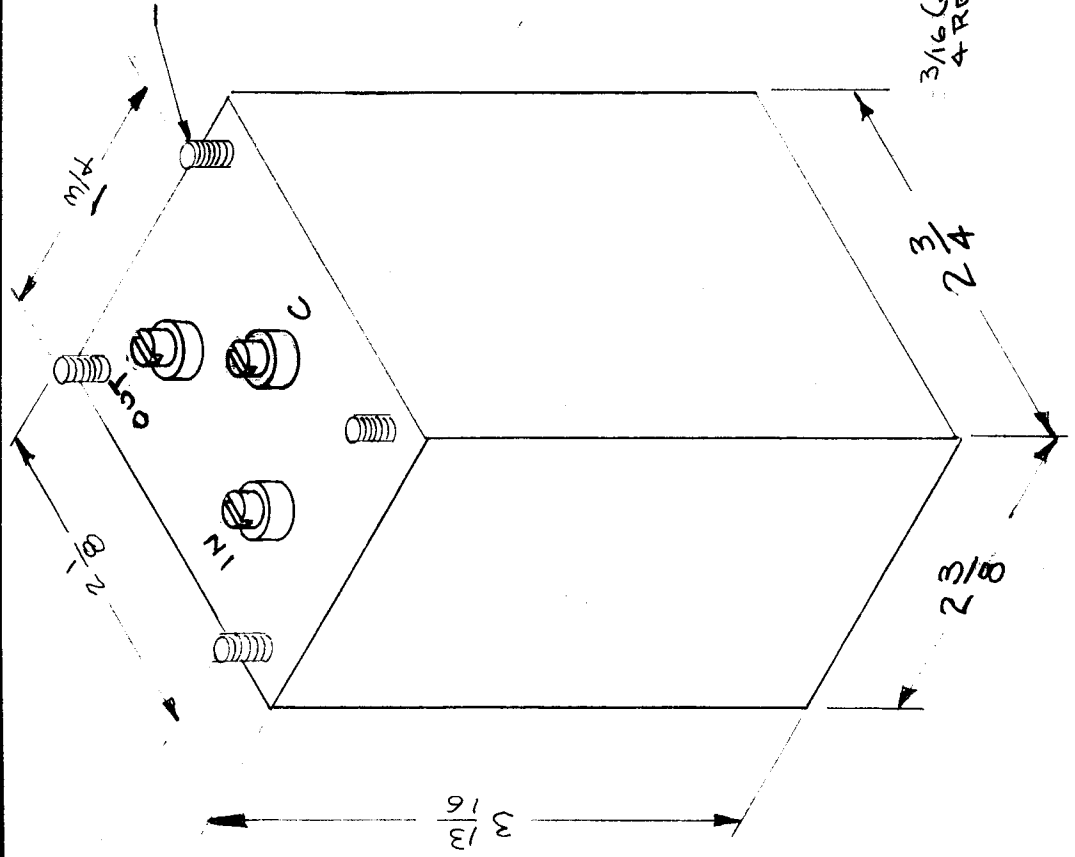
DIMENSION FOR REF. ONLY.

REQ. ITEM	PART NO.	DESCRIPTION	SYMBOL
	ff	THE TECHNICAL MATERIEL CORP. MAMARONECK, NEW YORK	
STOCK SIZE			
MATERIAL	ff	FILTER	
WEIGHT PER PC.			
TYPE & TEMPER	ff		
HEAT TREAT. SPEC.	ff		
FINISH & SPEC. NO.	ff		
DRAWN		ELEC. DES. APP.	MECH. DES. APP.
16 12-17-52		C.D.D.	
CHECKED		FINAL APPROVAL	
1A-279		FX-100	
		A	

ISSUE ITEM	CHANGED FROM	DATE	CN. NO.	DRAFTS	CHECKER	ENG. APP.
A 1	DIM. CHG'D. FROM 2 X 2-1/4 TO 2-1/16 X 2-5/16 AS PER BX-100-B	16/58	1	16	Ande	
TOLERANCES						
SCALE FULL						
DRILL, PUNCH, COMMERCIAL STOCK SIZES AND MANUFACTURERS TOLERANCES ARE NOT INCLUDED.						
ALL OTHERS	DEC. DIM. ±					
	FRAC. DIM. ±					
	ANGULAR DIM. ±					

RE. PER UNIT	459	USED ON	FX-150
MODEL	GSB-1	ASSY. NO.	
		DATE	8-23-56

6-32 X 3/8 STUDS



MECHANICAL SPECIFICATIONS:

Case - Steel
 Studs - 6-32 x 3/8
 Color - TMC Gray

ELECTRICAL SPECIFICATIONS:

Band Pass: Output must be flat within 6 db in the region - 17.30 Kc to 19.80 Kc.
Band Rejection: Output must be down at least 40.0 db at 16.80 Kc and 20.30 Kc.
Insertion Loss: Less than 3 db measured at the point of minimum loss within pass band.
Input-Output Nominal Impedances: 20,000 ohms, unbalanced.

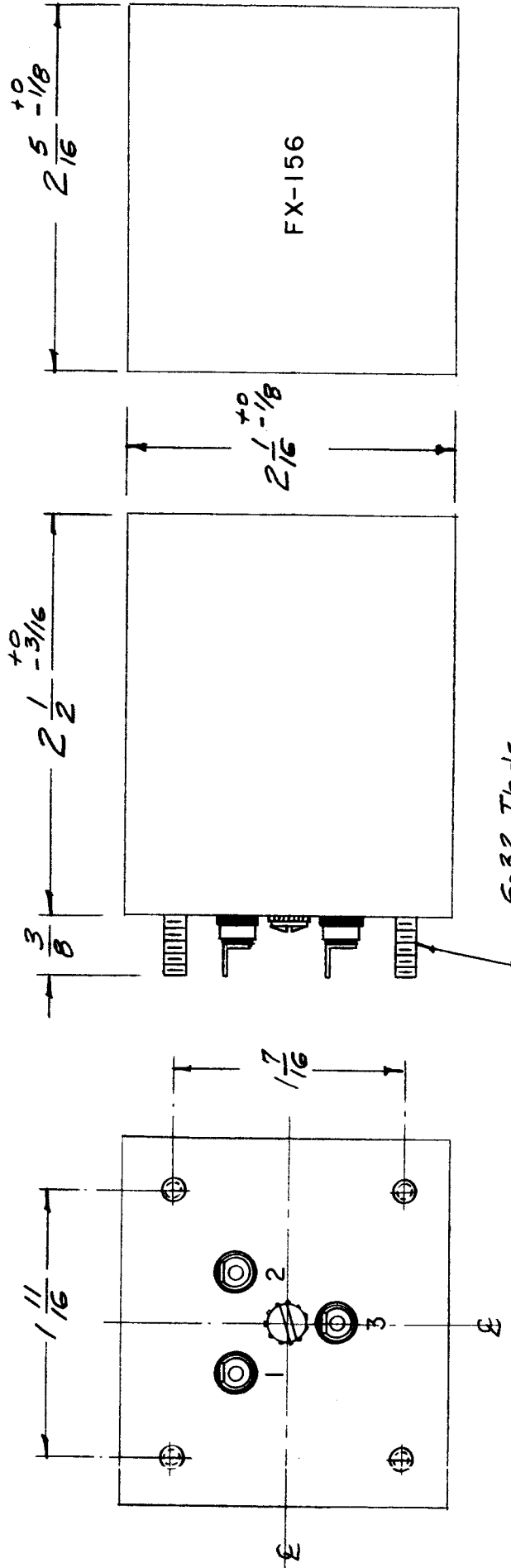
DRILLING PLAN

REG. ITEM	C 1	REQ. ITEM		PART NO.		DESCRIPTION	SYMBOL
STOCK SIZE						THE TECHNICAL MATERIEL CORP. MAMARONECK, NEW YORK	
MATERIAL						BAND PASS FILTER	
TYPE & TEMPER						10/24/56 G.S.	ASJ
HEAT TREAT. SPEC.						DRAWN	FINAL APPROVAL
FINISH & SPEC. NO.						P.R.X	FX-150 C
						ELEC. DES. APP.	MECH. DES. APP.

DATE	10/58	3	16	16	16	16	16
CH. NO.		2	2	2	2	2	2
DRAFTS							
CHECKER							
ENG. APP.							
SCALE:	4A-1335						

MAXIMUM ALLOWABLE TOLERANCES HAVE BEEN DETERMINED AND ANY DEVIATIONS WILL BE CAUSE FOR REJECTION. REMOVE ALL BURRS AND SHARP EDGES

REQ. PER. UNIT	MODEL	USED ON
1	TTC	ASSY. NO.
		DATE
		2-26-59
FX-156		



ELECTRICAL SPECIFICATIONS:

- Bandpass = 935 cps (± 10 cps)
- Input Impedance = 600 Ω
- Output Impedance = 600 Ω

MECHANICAL SPECIFICATIONS:

- CASE: Rectangular, Steel, MIL Type FB, Hermetically Sealed.
- FINISH: TMC Smooth Grey Enamel (Except Terminal End)

REQ. ITEM	DESCRIPTION	SYMBOL
	THE TECHNICAL MATERIEL CORP.	
	MAMARONECK, NEW YORK	
	FILTER, BANDPASS, 935 CFS	
	16 ^{2/24/59}	<i>AMP</i>
	DRAWN	CHECKED
	<i>RWR</i>	<i>DBB</i>
	ELEC. DES. APP	MECH. DES. APP
	FINISH & SPEC. NO.	FINAL APPROVAL
		FX-156

SCALE: FULL

2A-1651

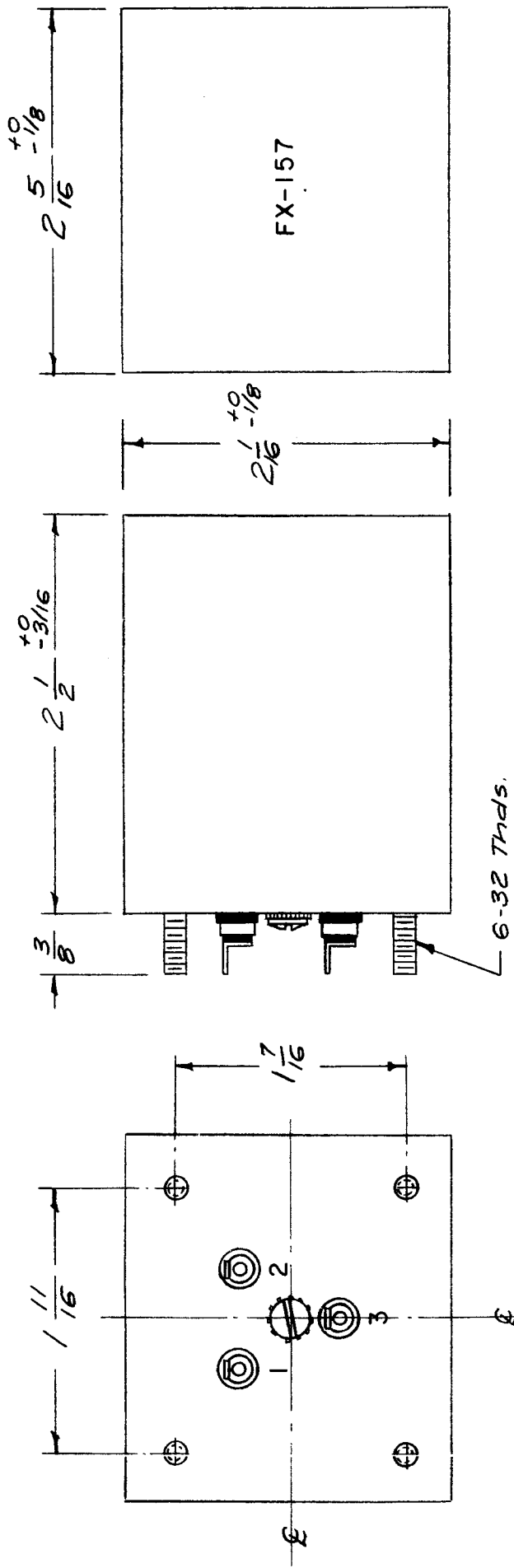
MAXIMUM ALLOWABLE TOLERANCES HAVE BEEN DETERMINED AND ANY DEVIATIONS WILL BE CAUSE FOR REJECTION. REMOVE ALL BURRS AND SHARP EDGES

DEC. DIM. \pm

FRAC. DIM. $\pm 1/64$

ANGULAR DIM. \pm

REQ. PER. UNIT	1	MODEL	TTG	USED ON	
		ASSY. NO.		DATE	
				2-26-59	FX-157



ELECTRICAL SPECIFICATIONS:

- Bandpass = 2805 cps (\pm 28 cps)
- Input Impedance = 600 Ω
- Output Impedance = 600 Ω

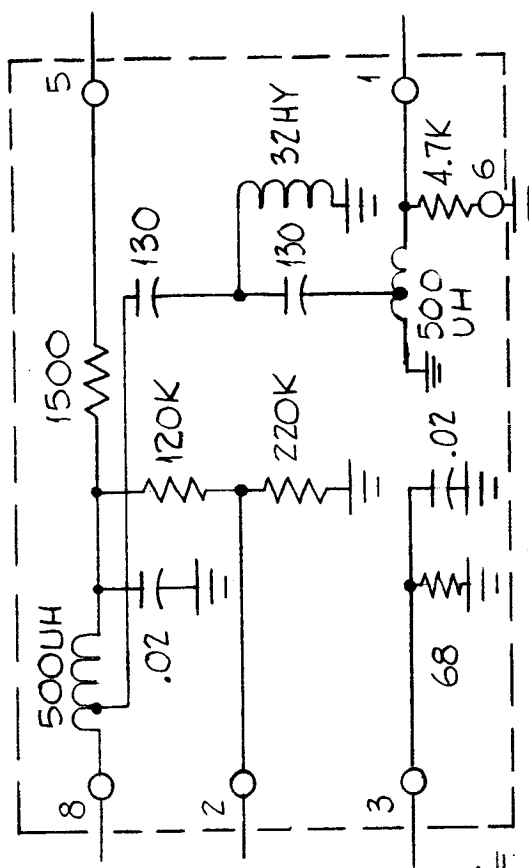
MECHANICAL SPECIFICATIONS:

CASE: Rectangular, Steel, MIL Type FB, Hermetically Sealed.
 FINISH: TMC Smooth Grey Enamel (Except Terminal End)

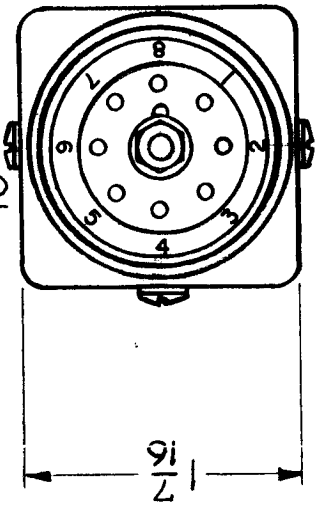
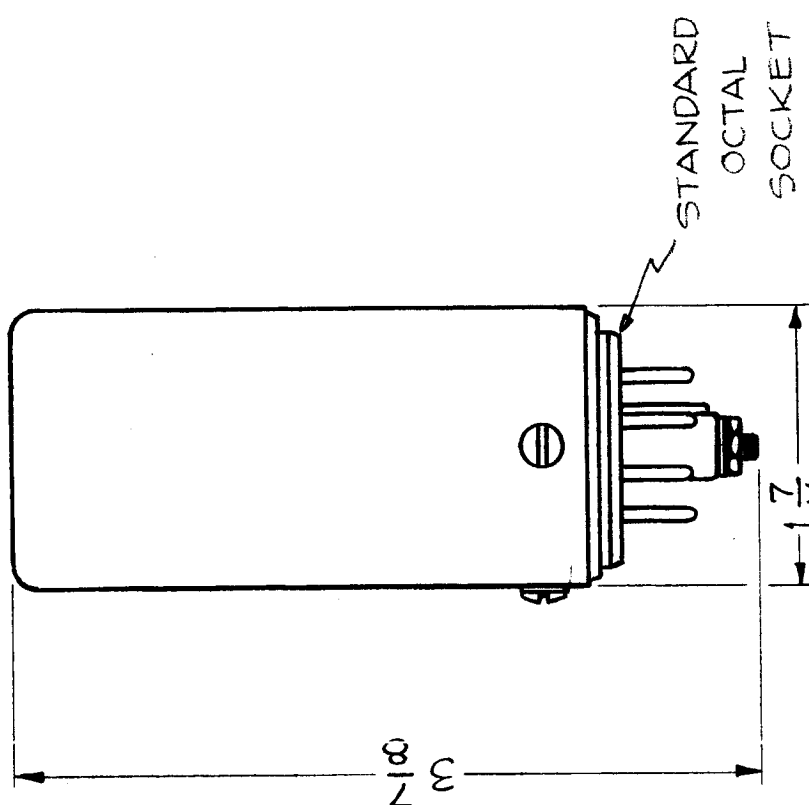
REQ. ITEM	CH. NO.	DRAFTS	CHECKER	ENG. APP.	REQ. ITEM	PART NO.	DESCRIPTION	SYMBOL
							THE TECHNICAL MATERIEL CORP.	
							MAMARONECK, NEW YORK	
							FILTER, BANDPASS, 2805CPS.	
ISSUE ITEM	CHANGED FROM	DATE	SCALE: FULL	2A-1652	16726/59			
TOLERANCES								
DEC. DIM. \pm								
FRAC. DIM. \pm 1/64								
ANGULAR DIM. \pm								
					DRAWN		CHECKED	
					BWB		90B	
					TYPE & TEMPER	HEAT TREAT. SPEC.		
					FINISH & SPEC. NO.			
					FINAL APPROVAL			
							FX-157	

REQ. PER UNIT	MODEL	USED ON	DATE
1	CMO-1	ASBY. NO.	4-ZO-60
			FX-161 B

CUTOFF FREQ - 1.3 MC
 INPUT - PIN 8
 OUTPUT - PIN 1
 GROUND - PIN 6
 CASE - ALUMINUM

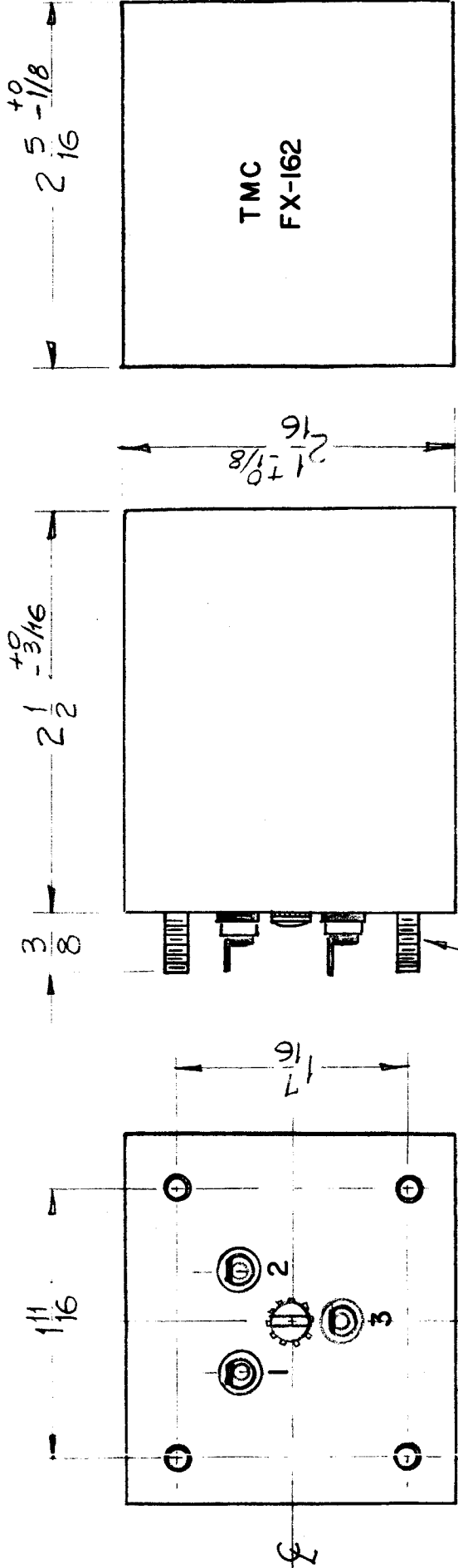


Schematic



ISSUE ITEM	CHANGED FROM	DATE	CH. NO.	DRAFTS	CHECKER	ENG. APP.	REG. ITEM	PART NO.	DESCRIPTION	SYMBOL	
B 2	Schematic Revised	12-28-60	3821	RU	JCB	STM			THE TECHNICAL MATERIEL CORP. MAMARONECK, NEW YORK		
A 1	ON SCHEMATIC 68 WAS 68K, ADDED 120K	12/9/60	3677	STM	JCB	J			FILTER, HIGH PASS		
TOLERANCES											
DEC. DIM. ±											
FRAC. DIM. ± 1/64											
ANGULAR DIM. ±											
MATERIAL											
TYPE & TEMPER											
HEAT TREAT. SPEC.											
FINISH & SPEC. NO.											
DRAWN											
CHECKED											
ELEC. DES. APP. MECH. DES. APP.											
J.C. Biola											
165											
FINAL APPROVAL											
FX-161 B											

REQ. PER. UNIT	1
MODEL	CLL-1
USED ON	
ASSY. NO.	
DATE	9-9-60
FX-162	



6-32 Thds.

ELECTRICAL SPECIFICATIONS

LOWPASS FREQ. - 2Kc

MECHANICAL SPECIFICATIONS

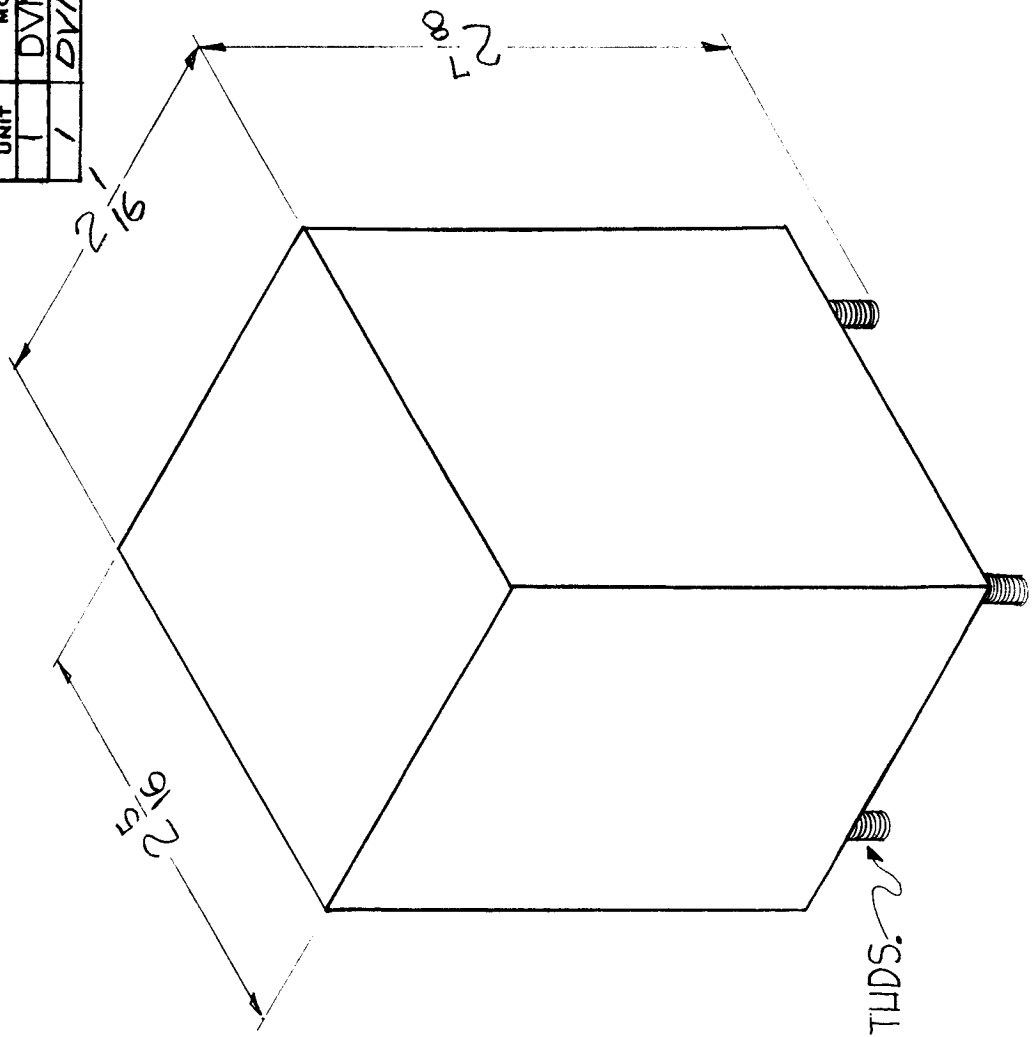
CASE: RECTANGULAR, STEEL, MIL TYPE FB, HERMETICALLY SEALED.

FINISH: TMC SMOOTH GREY ENAMEL (EXCEPT TERMINAL END).

REQ. ITEM	REQ. ITEM	PART NO.	DESCRIPTION	SYMBOL		
			THE TECHNICAL MATERIEL CORP.			
			MAMARONECK, NEW YORK			
			FILTER, LOWPASS 2KC			
ISSUE ITEM	CHANGED FROM	DATE	CH. NO.	DRAFTS	CHECKER	ENG. APP.
TOLERANCES						
SCALE: FULL 4A-1905						
MAXIMUM ALLOWABLE TOLERANCES HAVE BEEN DETERMINED AND ANY DEVIATIONS WILL BE CAUSE FOR REJECTION. REMOVE ALL BURRS AND SHARP EDGES						
DEC. DIM. ±						
FRAC. DIM. ±						
ANGULAR DIM. ±						
TYPE & TEMPER	HEAT TREAT. SPEC.	DRAWN	CHECKED	FINAL APPROVAL		
		DRM	KD	K6		
FINISH & SPEC. NO.	ELEC. DES. APP. MECH. DES. APP.					
	FX-162					

REQ. PER. UNIT	MODEL	USED ON	FX-164
1	DVM-2	ASS'Y. NO.	
1	DVM-4	DATE	7-6-61
			2-8-62

ELECTRICAL SPECIFICATIONS
 SYMMETRICAL BANDPASS
 100 KC CRYSTAL FILTER
 6DB BW 500 CPS



6-32 THDS.

ISSUE ITEM	CHANGED FROM	DATE	CH. NO.	DRAFTS	CHECKER	ENG. APP.	REQ. ITEM	PART NO.	DESCRIPTION	SYMBOL
TOLERANCES									THE TECHNICAL MATERIEL CORP.	
DEC. DIM. ±									MAMARONECK, NEW YORK	
FRAC. DIM. ± 1/64									CRYSTAL FILTER	
ANGULAR DIM. ±										
SCALE: DO NOT SCALE (4A-1916)										
MAXIMUM ALLOWABLE TOLERANCES HAVE BEEN DETERMINED AND ANY DEVIATIONS WILL BE CAUSE FOR REJECTION. REMOVE ALL BURRS AND SHARP EDGES										
TOLERANCES										
MATERIAL										
TYPE & TEMPER										
HEAT TREAT. SPEC.										
FINISH & SPEC. NO.										
ELEC. DES. APP.										
MECH. DES. APP.										
DRAWN										
CHECKED										
FINAL APPROVAL										
FX-164										

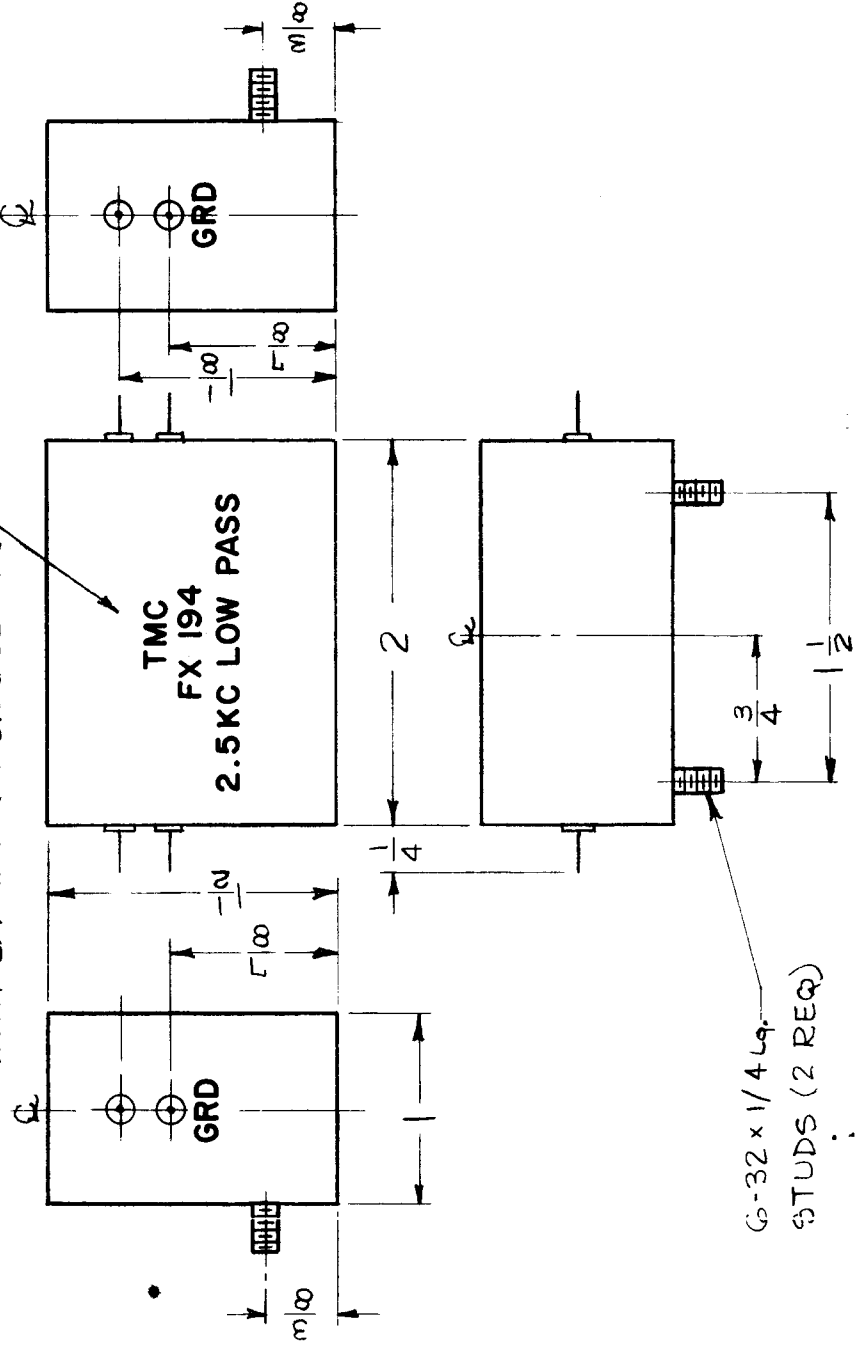
STANDARD DRAWING

THE CONTENTS OF THIS DRAWING ARE THE EXCLUSIVE PROPERTY OF THE TECHNICAL MATERIEL CORP. ITS UNAUTHORIZED USE FOR REPRODUCTION IN WHOLE OR IN PART IS STRICTLY FORBIDDEN.		USED ON ASSY. NO.	DATE
REQ. PER UNIT 1	MODEL VLR-1	A-3168	5-27-63
			FX 194 A

STAMP AS SHOWN, 1/8 HIGH BLACK GOTHIC LETTERING. WITH LATEST REVISION LETTER.

~ SPECIFICATIONS ~

- 1 ~ LOW PASS FILTER.
- 2 ~ PASSBAND RIPPLE ~ ±1.5db.
- 3 ~ DOWN - 3db AT 2.5KC. ±100cps.
- 4 ~ DOWN - 60db OR BETTER AT 3.0KC AND UP.
- 5 ~ TEMPERATURE RANGE ~ 0° - 50°C.
- 6 ~ INPUT IMPEDANCE ~ 600Ω.
- 7 ~ OUTPUT IMPEDANCE ~ 600Ω.
- 8 ~ CASE ~ STEEL, HERMETICALLY SEALED.
- 9 ~ FINISH ~ TMC GRAY, S 115.
- 10 ~ TERMINALS ~ .040 ± .003
- 11 ~ NICKEL-IRON-COBALT ALLOY.
- 12 ~ DE-GASSED - 4 REQ.
- 13 ~ TERMINAL INSULATION ~ GLASS.



SYM	DESCRIPTION	DATE	CH. NO.	DRAFTS	CHECKER	ENG. APP.	REQ. ITEM	PART NO.	M. GELLMAN	DESCRIPTION	SYMBOL	
A	ITA 3.0K CWAS 30KC. IT. 10 ±.040 ±.003 W/AS ±.003 ±.000 CPS BAND ORIGINAL RELEASE FOR PRODUCTION	6-23-64	14300	DIV	DR	JC				THE TECHNICAL MATERIEL CORP. MAMARONECK. NEW YORK		
O		6-1-64	0	A.M.	R	NA				FILTER, LOW PASS, 2.5 KC		
	UNLESS OTHERWISE SPECIFIED DIMENSIONS ARE IN INCHES AND INCLUDE CHEMICALLY APPLIED OR PLATED FINISHES	SCALE 1:1										
DECIMALS		FRACTIONS		CODE	CHECKER		TYPE & TEMPER		DRAWN		FINAL APPROVAL	
.X ±.05		1/8		C	SEE SPEC 9		HEAT TREAT. SPEC.		G. J. JONES		FX 194	
.XX ±.01		ANGLES			FINISH & SPEC. NO.		ELEC. DES. APP.		MECH. DES. APP.			
.XXX ±.005		± 0° 30'			S401-120							