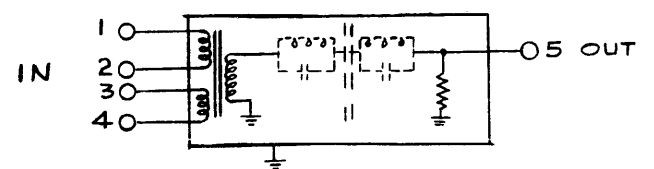


TMC
FX-154

SPECIFICATIONS

MECHANICAL
CASE—Steel, Hot tinned.
FINISH—Smooth Grey Enamel.

ELECTRICAL
BANDPASS—Output must be flat within 3 db. in the region of 13.70 Kcs. to 16.65 Kcs.
BAND REJECTION - Output must be down at least 50.0db at 12.40 Kcs. and 17.50 Kcs.
INSERTION LOSS - Less than 4db. at the point of minimum loss within bandpass.
INPUT IMPEDANCE - 1000 Ω bal./unbal. (Split Primary)
OUTPUT IMPEDANCE - 10,000 Ω unbal. (internally terminated)



PROPERTY OF THE TECHNICAL MATERIEL CORPORATION

The TECHNICAL MATERIEL CORPORATION claims proprietary right in the internal circuit shown. This drawing is loaned to you for engineering information only and may not be reproduced or used to manufacture anything shown hereon without permission from THE TECHNICAL MATERIEL CORPORATION to the user. This drawing is loaned for mutual assistance and is subject to recall at any time.

Property of:
THE TECHNICAL MATERIEL CORPORATION
MAMARONECK, NEW YORK

ISSUE	ITEM	CHANGED FROM	DATE	CH. NO.	DRAFTS	CHECKER	APP.
A	1	DIM. CHG'D. FROM 2-19/64 X2-22/64 TO 2-3/8 X 2-3/4 AS PER BK-111	1/8/58	1	16	JAW	JW
TOLERANCES			4A-1424				
DEC. DIM. ±			MAXIMUM ALLOWABLE TOLERANCES HAVE BEEN DETERMINED AND ANY DEVIATIONS WILL BE CAUSE FOR REJECTION.				
FRAC. DIM. ± 1/64			REMOVE ALL BURRS AND SHARP EDGES				
ANGULAR DIM. ±							

1	SBE-1+2	LS-B	Z101	6-21-57
REQ. PER UNIT	MODEL	USE	SYMBOL	DATE
USED ON				

REQ. ITEM	PART NO.	DESCRIPTION	SYMBOL
	//	THE TECHNICAL MATERIEL CORP. MAMARONECK, NEW YORK	
	//	FILTER, BANDPASS (FX-154)	
	//	16 6-21-57	JAW
	//	TYPE & TEMPER	CHECKED
	//	HEAT TREAT. SPEC.	FINAL APPROVAL
	//	FINISH & SPEC. NO.	ELEC. DES. APP. MECH. DES. APP.
		MVP	FX-154 A