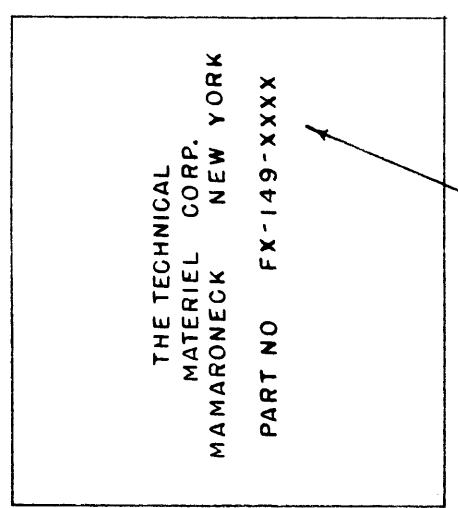
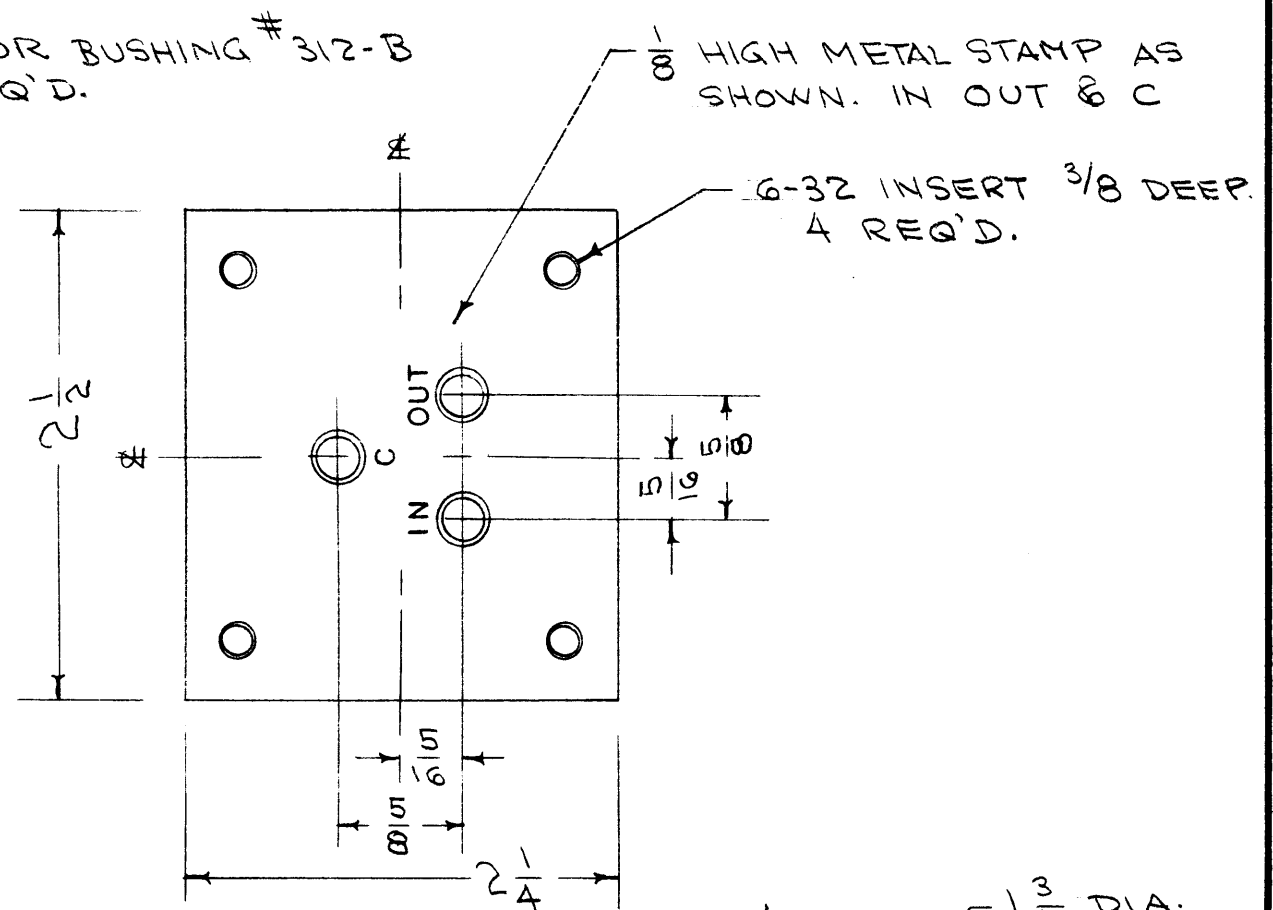
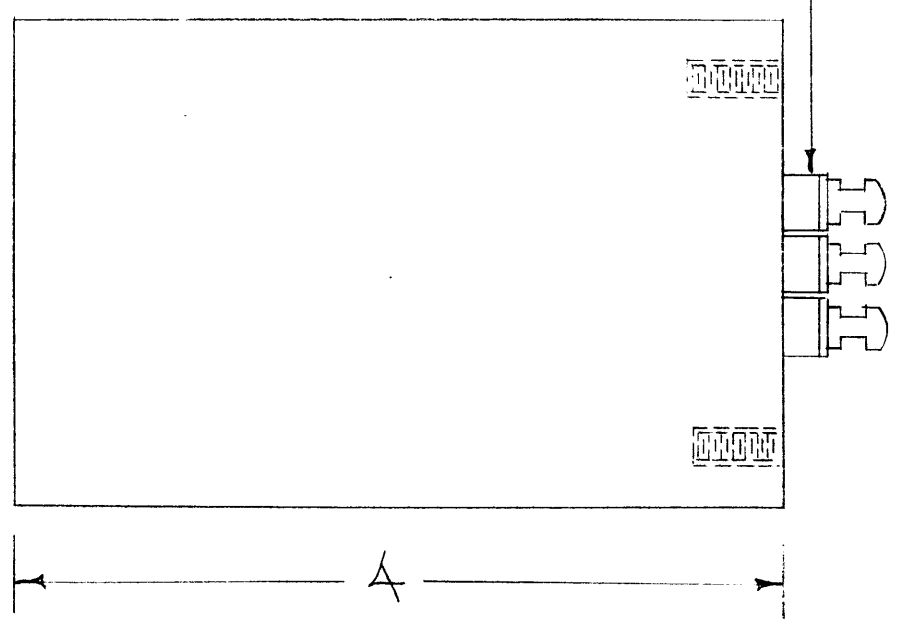


FX-149

BLACK STAMPING AS BELOW



CENTER FREQUENCY



ELECTRICAL CHARACTERISTICS:

BAND PASS: OUTPUT MUST BE FLAT WITHIN 3 db. WITHIN THE REGION OF ± 255 CPS OF CENTER FREQUENCY.

BAND REJECTION: THE OUTPUT MUST BE DOWN AT LEAST 40 db. AT ± 680 CPS OF CENTER FREQ. AND SHALL NEVER BE LESS THAN THIS FIGURE IN THE FREQ. RANGE OF 0 TO $(f_c - 680$ CPS) AND FROM $(f_c + 680$ CPS) TO 20 KCS.

INSERTION LOSS: LESS THAN 3 db.

INPUT & OUTPUT IMPEDANCES: BOTH 600 OHMS, UNBALANCED.

CONNECTIONS: DESIGN TO BE SUCH THAT ANY NUMBER OF MEMBERS OF THIS FAMILY OF FILTERS MAY BE OPERATED WITH THEIR INPUTS CONNECTED IN PARALLEL.

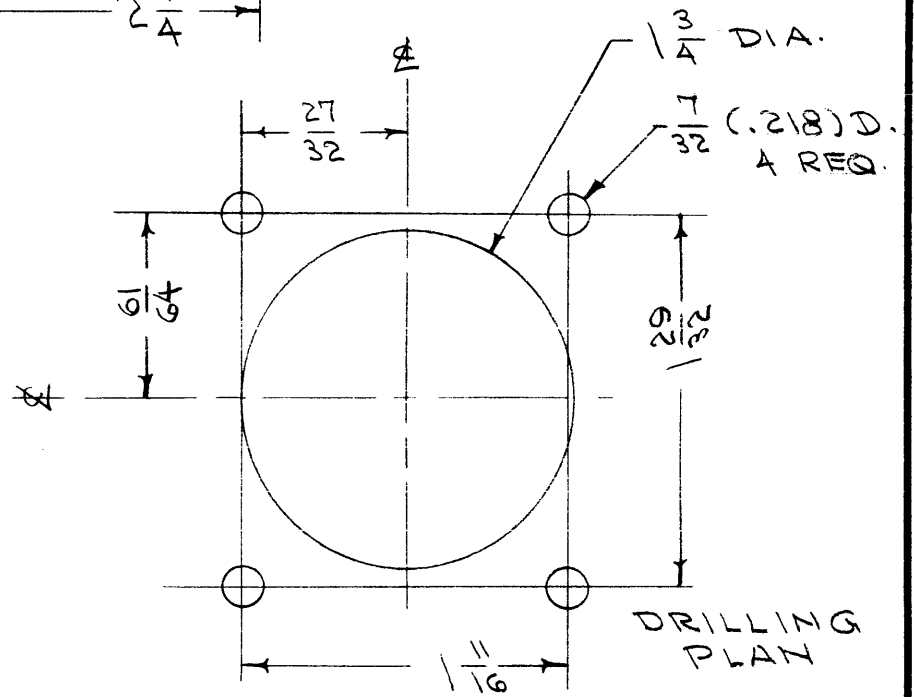
MECHANICAL SPECIFICATIONS:

CASE: STEEL $2\frac{1}{4} \times 2\frac{1}{2} \times 4$

INSERTS: 6-32 X $\frac{3}{8}$ DEEP

FINISH: S-115 TMC SMOOTH GRAY ENAMEL

STAMPING: AS SHOWN ABOVE



TYPE DESIGNATION

FX-149-XXXX

STYLE NUMBER CENTER FREQ.

REF. BURNELL & CO.

ISSUE	ITEM	CHANGED FROM	DATE	CH. NO.	DRAFTS	CHECKER	ENG. APP.

TOLERANCES		SCALE:
DEC. DIM. \pm	MAXIMUM ALLOWABLE TOLERANCES HAVE BEEN DETERMINED AND ANY DEVIATIONS WILL BE CAUSE FOR REJECTION. REM VE ALL BURRS AND SHARP EDGES	
FRAC. DIM. \pm		
ANGULAR DIM. \pm		

REQ. PER UNIT	MODEL	PROJECT NO.	ASS'Y. NO.	DATE	USED ON

REQ. ITEM	PART NO.	DESCRIPTION	SYMBOL
		THE TECHNICAL MATERIEL CORP. MAMARONECK. NEW YORK	
		FILTER, BAND PASS	
		STEEL	
		MATERIAL	
		TYPE & TEMPER	
		HEAT TREAT. SPEC.	
		FINISH & SPEC. NO.	
		ELEC. DES. APP.	
		MECH. DES. APP.	