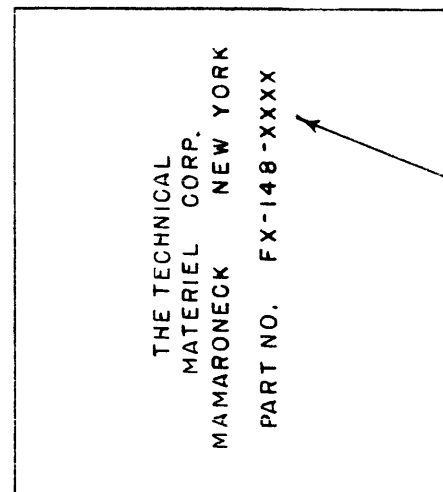
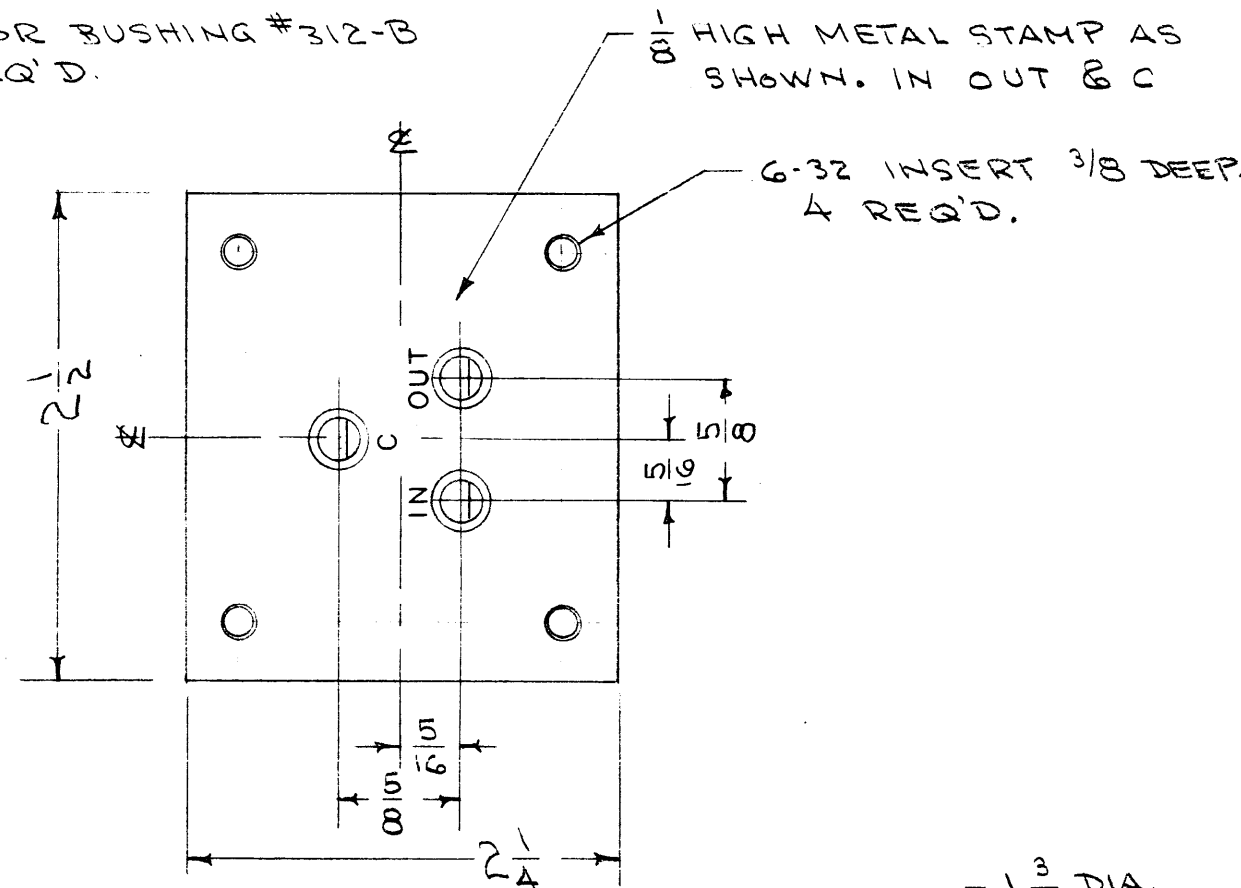
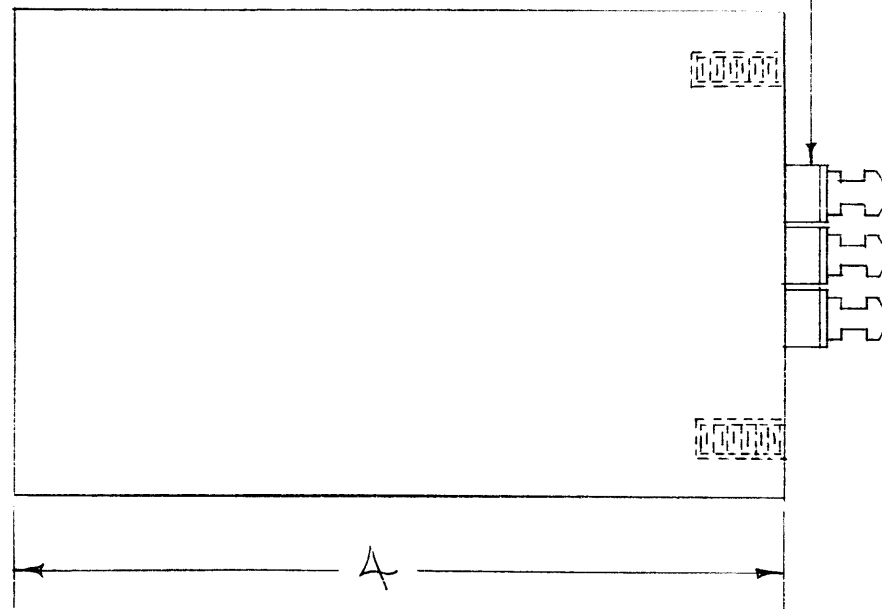


EX-148

BLACK STAMPING AS BELOW



CENTER FREQUENCY

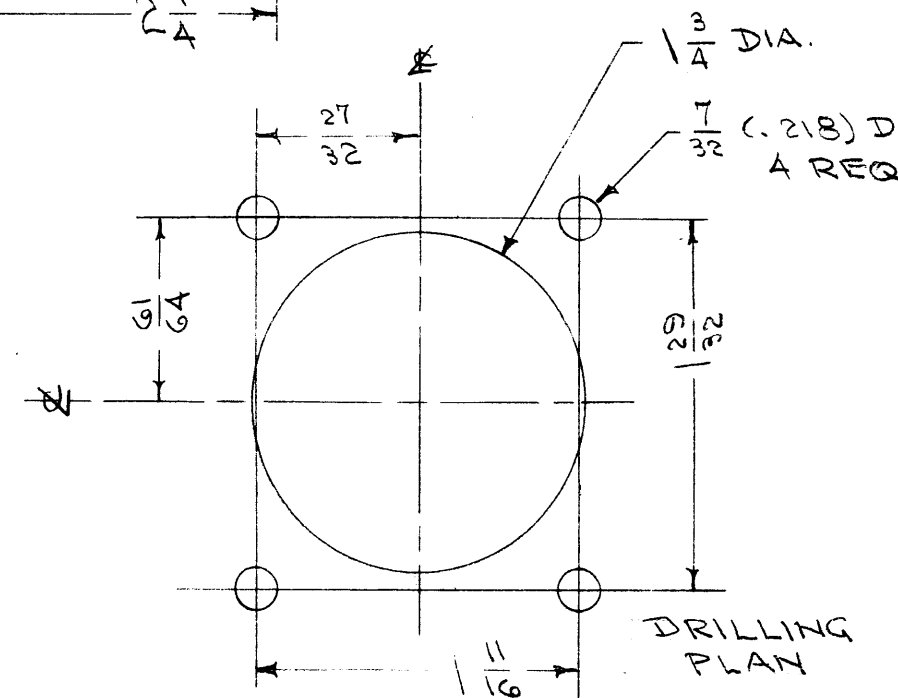


**ELECTRICAL CHARACTERISTICS:**

- BAND PASS:** OUTPUT MUST BE FLAT WITHIN 3db. WITHIN THE REGION OF  $\pm 255$  CPS OF CENTER FREQUENCY.
- BAND REJECTION:** THE OUTPUT MUST BE DOWN AT LEAST 25 db. AT  $\pm 680$  CPS OF CENTER FREQ. AND SHALL NEVER BE LESS THAN THIS FIGURE IN THE FREQ. RANGE OF 0 TO  $(f_c - 680$  CPS) AND FROM  $(f_c + 680$  CPS) TO 20 KCS.
- INSERTION LOSS:** LESS THAN 3db.
- INPUT & OUTPUT IMPEDANCES:** BOTH 600 OHMS, UNBALANCED.
- CONNECTIONS:** DESIGN TO BE SUCH THAT ANY NUMBER OF MEMBERS OF THIS FAMILY OF FILTERS MAY BE OPERATED WITH THEIR OUTPUTS CONNECTED IN PARALLEL.

**MECHANICAL SPECIFICATIONS**

- CASE:** STEEL 2 1/4 X 2 1/2 X 4
- INSERTS:** 6-32 X 3/8 DEEP.
- FINISH:** S-115 TMC SMOOTH GRAY ENAMEL
- STAMPING:** AS SHOWN ABOVE



**TYPE DESIGNATION**

FX-148-XXXX

STYLE NUMBER CENTER FREQ.

REF. BURNELL & CO.

ISSUE ITEM	CHANGED FROM	DATE	CH. NO.	DRAFTS	CHECKER	ENG. APP.
TOLERANCES		SCALE:				
DEC. DIM. $\pm$	MAXIMUM ALLOWABLE TOLERANCES HAVE BEEN DETERMINED AND ANY DEVIATIONS WILL BE CAUSE FOR REJECTION.					
FRAC. DIM. $\pm$	REMOVE ALL BURRS AND SHARP EDGES					
ANGULAR DIM. $\pm$						

REQ. PER UNIT	MODEL	PROJECT NO.	ASS'Y. NO.	DATE

REQ. ITEM	PART NO.	DESCRIPTION	SYMBOL
		THE TECHNICAL MATERIEL CORP. MAMARONECK. NEW YORK	
STOCK SIZE		FILTER, BAND PASS	
MATERIAL			
TYPE & TEMPER		HEAT TREAT. SPEC.	
FINISH & SPEC. NO.		ELEC. DES. APP.	MECH. DES. APP.