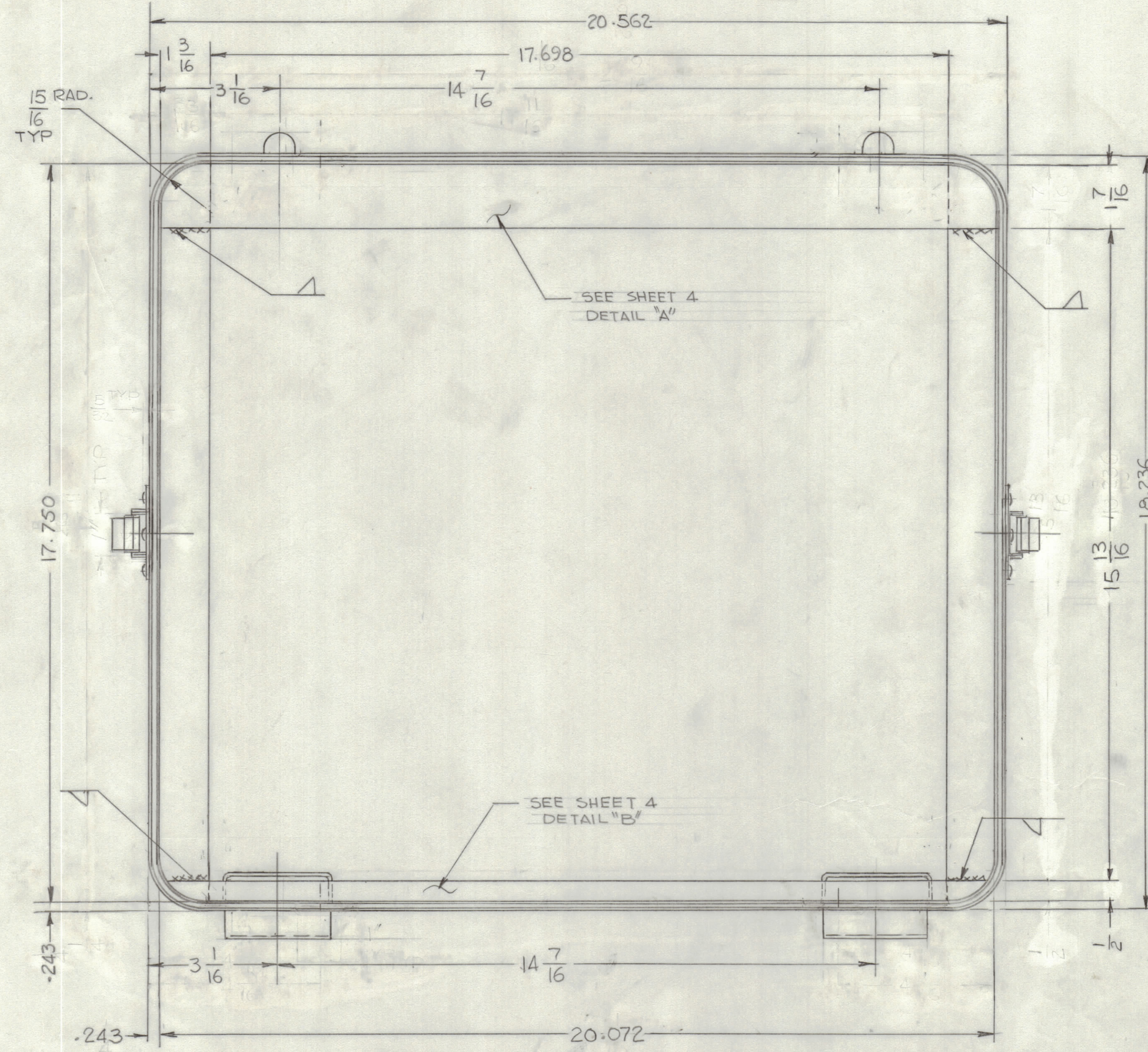
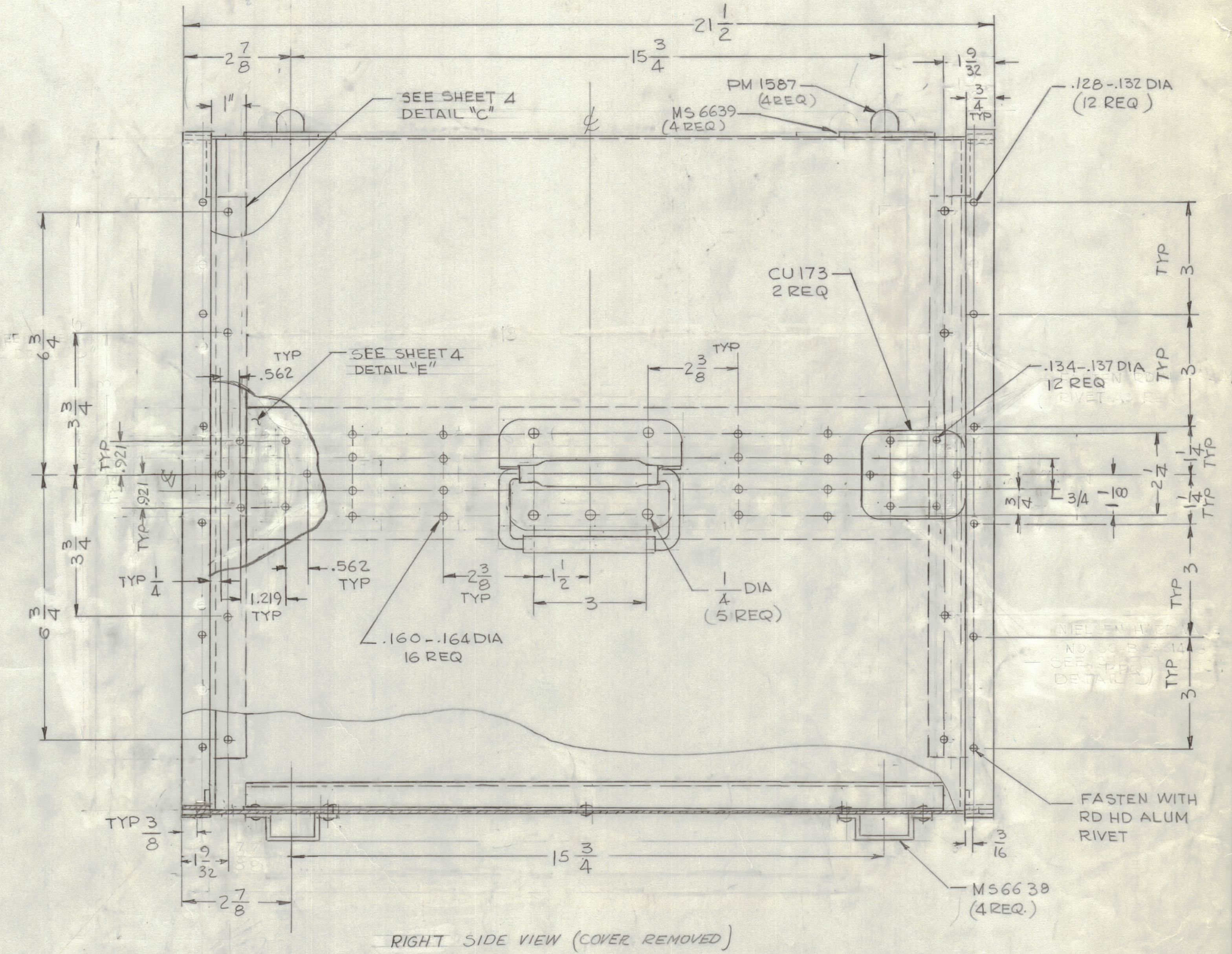


REVISIONS							
E.M.N.NO	DRAFT	CHKD	ZONE	LTR	DESCRIPTION	DATE	APPROVED
				X	ORIGINAL ISSUE		
					ORIGINAL RELEASE	1-10-77	*



FRONT VIEW (COVER REMOVED)



RIGHT SIDE VIEW (COVER REMOVED)

5	TOC-25	
3	TOC-24	
QTY / UNIT	MODEL USED ON	ASS'Y NO.
APPLICATION		
CODE		
MATERIAL		
FINISH 5521		

UNLESS OTHERWISE SPECIFIED DIMENSIONS ARE IN INCHES AND INCLUDE CHEMICALLY APPLIED OR PLATED FINISHES

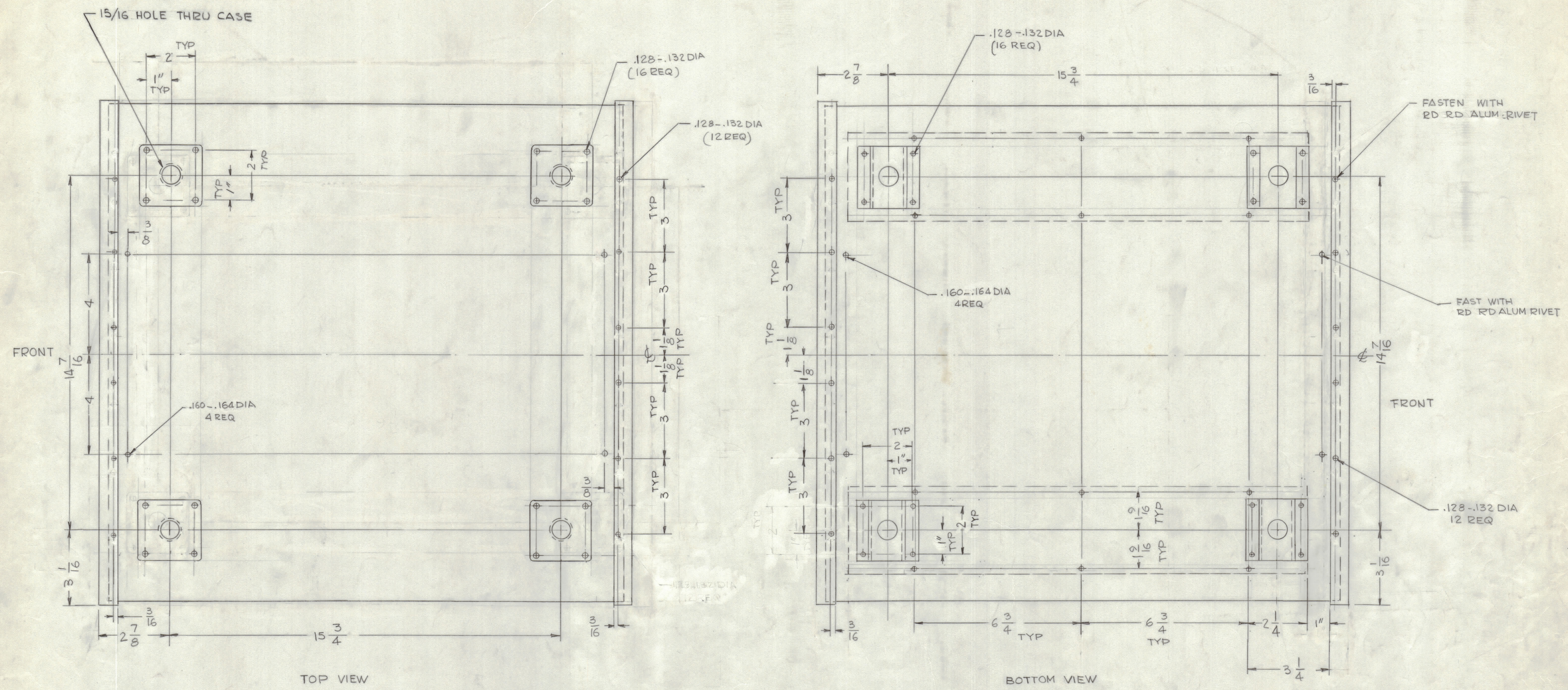
TOLERANCES ON
 DECIMALS .X ± .05
 .XX ± .01
 .XXX ± .005

FRACTIONS ± 1/64
 ANGLES ± 0° -30'

QTY. REQ.	ITEM	PART NO.	DESCRIPTION	SYMBOL
LIST OF MATERIAL				
FINAL APPROVAL		DATE	THE TECHNICAL MATERIEL CORP.	
MECH. DES.		DATE	MAMARONECK, NEW YORK	
ELECT. DES.		DATE	CASE, TRANSIT OPERATING	
CHECKED		DATE		
DRAWN		DATE		
MATERIAL			SIZE CODE IDENT NO. DWG NO.	ISSUE
FINISH 5521			D 82679 CW 108	
SCALE 1:2			SHEET 1 OF 4	

NOTICE TO PERSONS RECEIVING THIS DRAWING
 THE TECHNICAL MATERIEL CORPORATION claims proprietary right in the material disclosed hereon. This drawing is issued in confidence for engineering information only and may not be reproduced or used to manufacture anything shown hereon without permission from THE TECHNICAL MATERIEL CORPORATION to the user. This drawing is loaned for mutual assistance and is subject to recall at any time.

REVISIONS						
E.M.N.NQ	DRAFT	CHKD	ZONE	LTR	DESCRIPTION	DATE
					ORIGINAL RELEASE	1-10-77



- FINISH NOTE:**
- 5404 YEL IRIDITE
 - 5114 ZINC CHROMATE PRMER
 - 5521 TMC GRAY TEXTURED VINYL PAINT

5	TOC-25	
3	TOC-24	
QTY / UNIT	MODEL USED ON	ASS'Y NO.
APPLICATION		
CODE		

NOTICE TO PERSONS RECEIVING THIS DRAWING
 THE TECHNICAL MATERIEL CORPORATION claims proprietary right in the material disclosed hereon. This drawing is issued in confidence for engineering information only and may not be reproduced or used to manufacture anything shown hereon without permission from THE TECHNICAL MATERIEL CORPORATION to the user. This drawing is loaned for mutual assistance and is subject to recall at any time.

UNLESS OTHERWISE SPECIFIED DIMENSIONS ARE IN INCHES AND INCLUDE CHEMICALLY APPLIED OR PLATED FINISHES

TOLERANCES ON

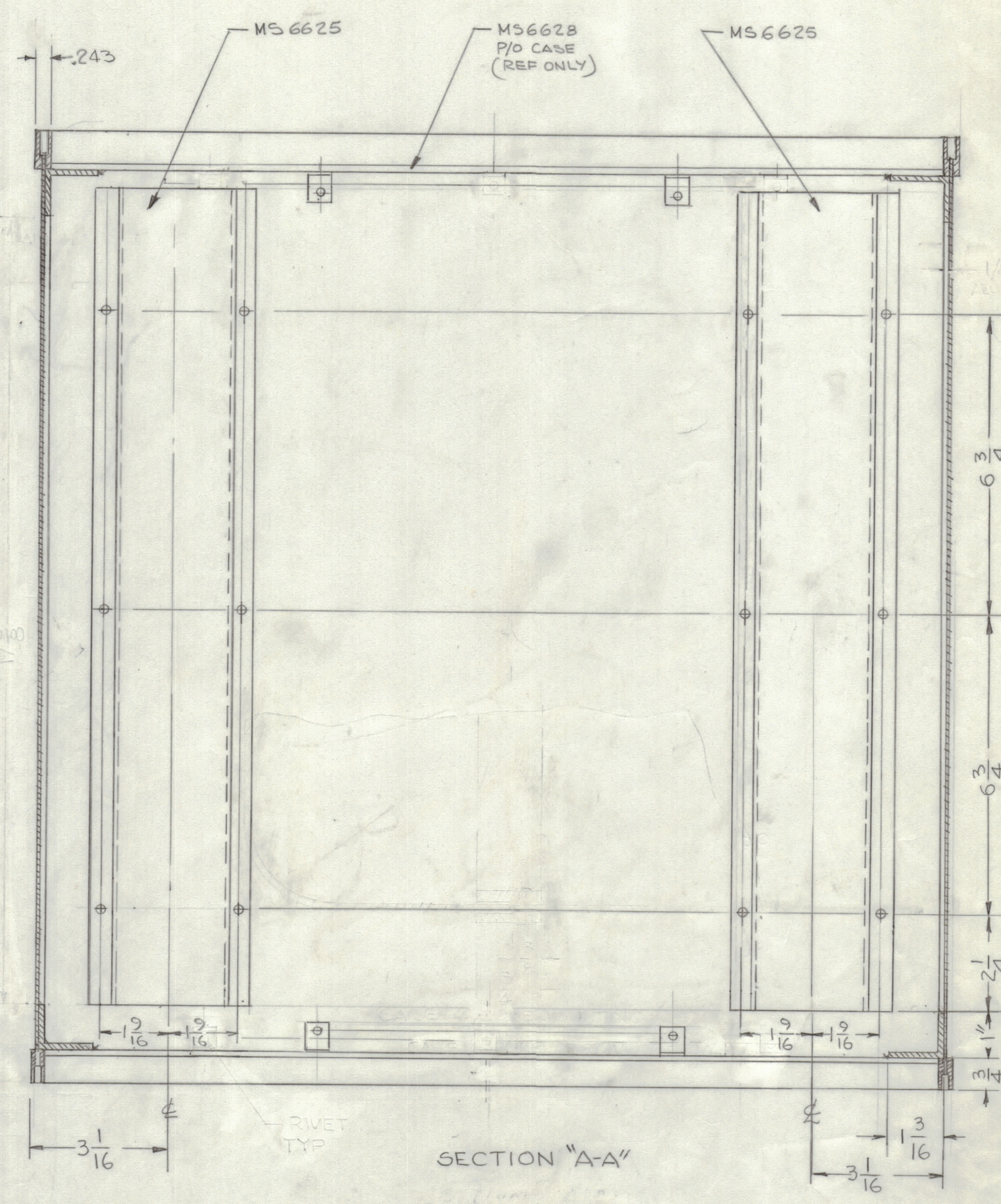
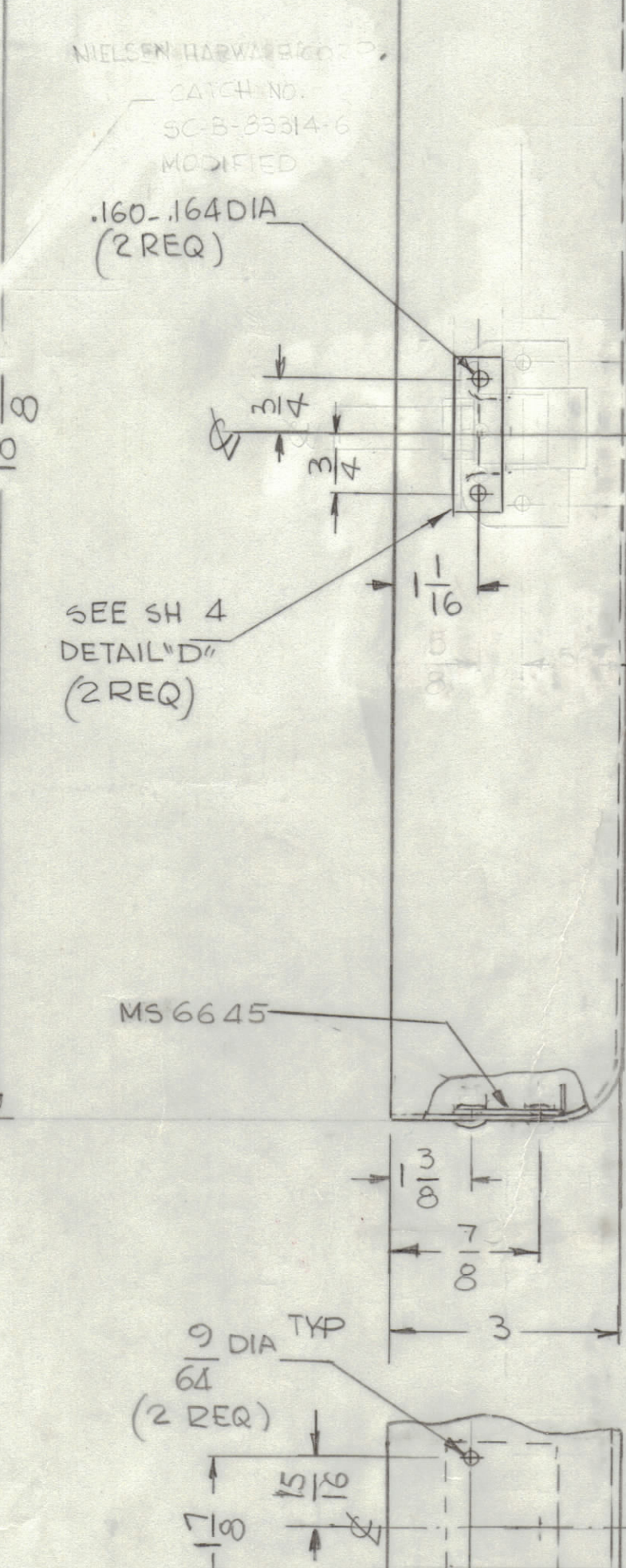
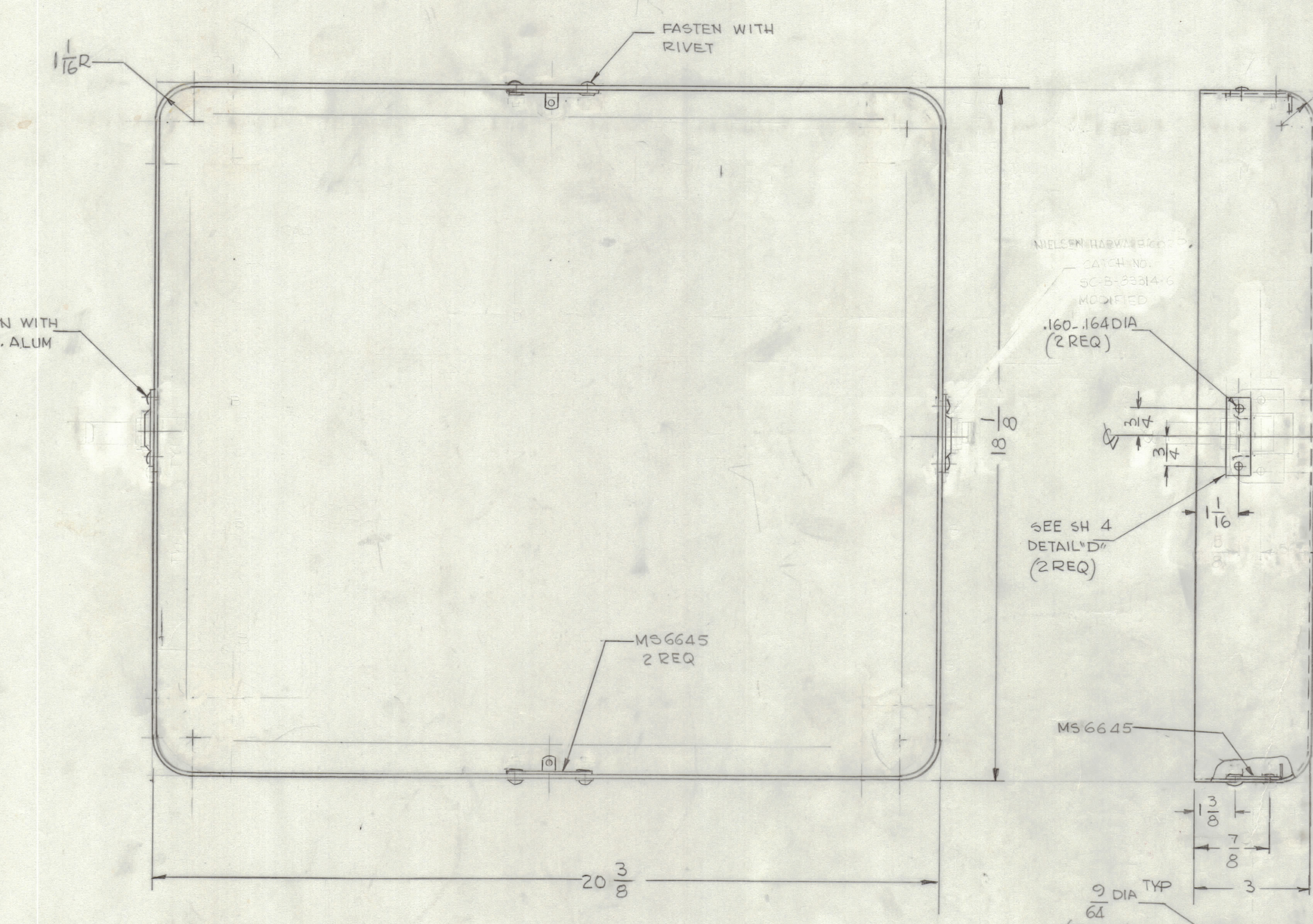
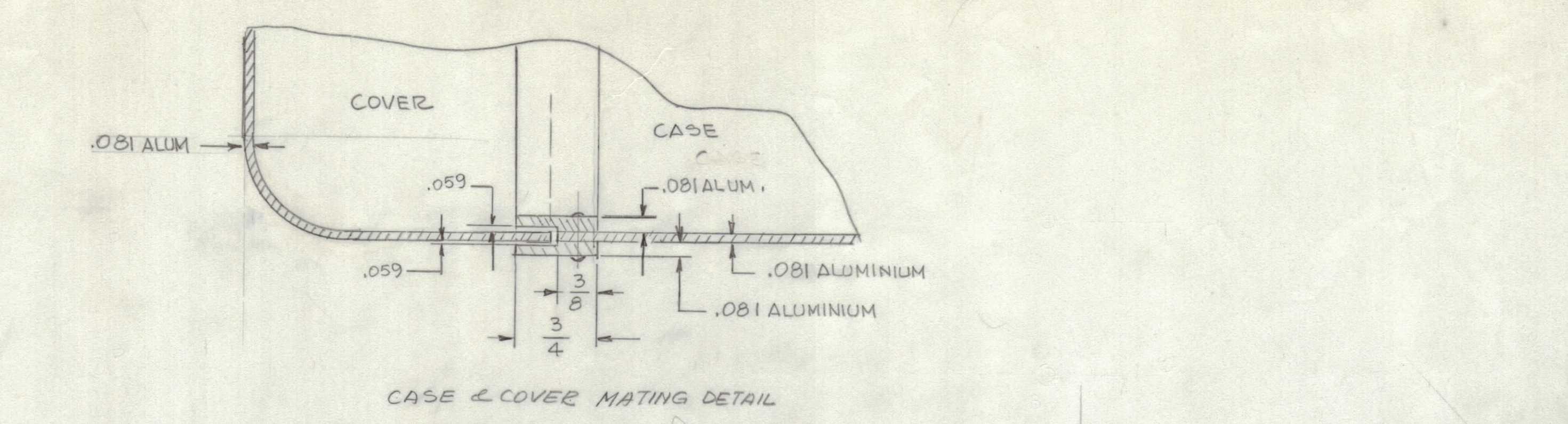
DECIMALS	FRACTIONS
.X ± .05	± 1/64
.XX ± .01	ANGLES
.XXX ± .005	± 0° -30'

MATERIAL

FINISH

QTY. REQ.	ITEM	PART NO.	DESCRIPTION	SYMBOL
LIST OF MATERIAL				
THE TECHNICAL MATERIEL CORP. MAMARONECK, NEW YORK				
CASE, TRANSIT OPERATING				
SIZE		CODE	IDENT NO.	DWG NO.
D		82679	CW	108
SCALE 1:2		SHEET 2 OF 4		

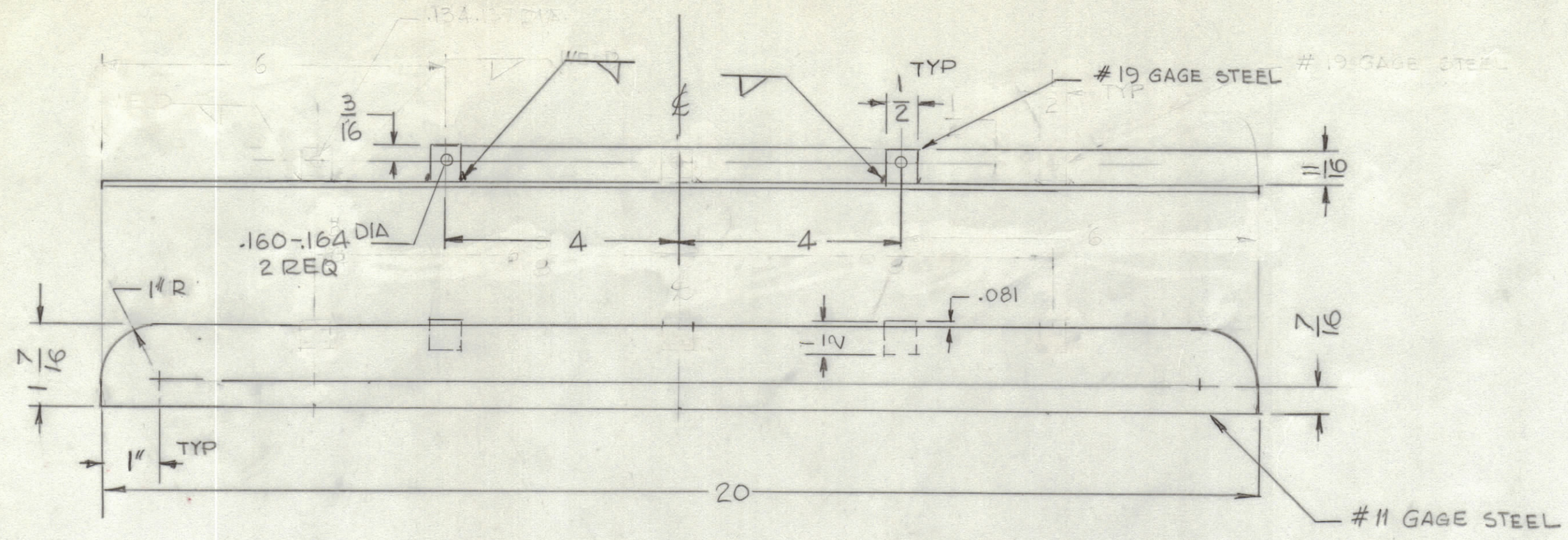
				REVISIONS			
E.M.N.O	DRAFT	CHKD	ZONE	LTR	DESCRIPTION	DATE	APPROVED
				10	ORIGINAL RELEASE	1-10-77	



QTY. REQ.	ITEM	PART NO.	DESCRIPTION	SYMBOL
LIST OF MATERIAL				
THE TECHNICAL MATERIEL CORP. MAMARONECK, NEW YORK				
CASE, TRANSIT OPERATING COVER & SECTION				
FINAL APPROVAL		DATE	1/10/77	
MECH. DES.		DATE		
ELECT. DES.		DATE		
CHECKED		DATE		
DRAWN		DATE	8-22-75	
MATERIAL			SIZE	CODE IDENT NO. DWG NO.
FINISH			D	82679 CW108
SCALE				
				ISSUE
				3 OF 4

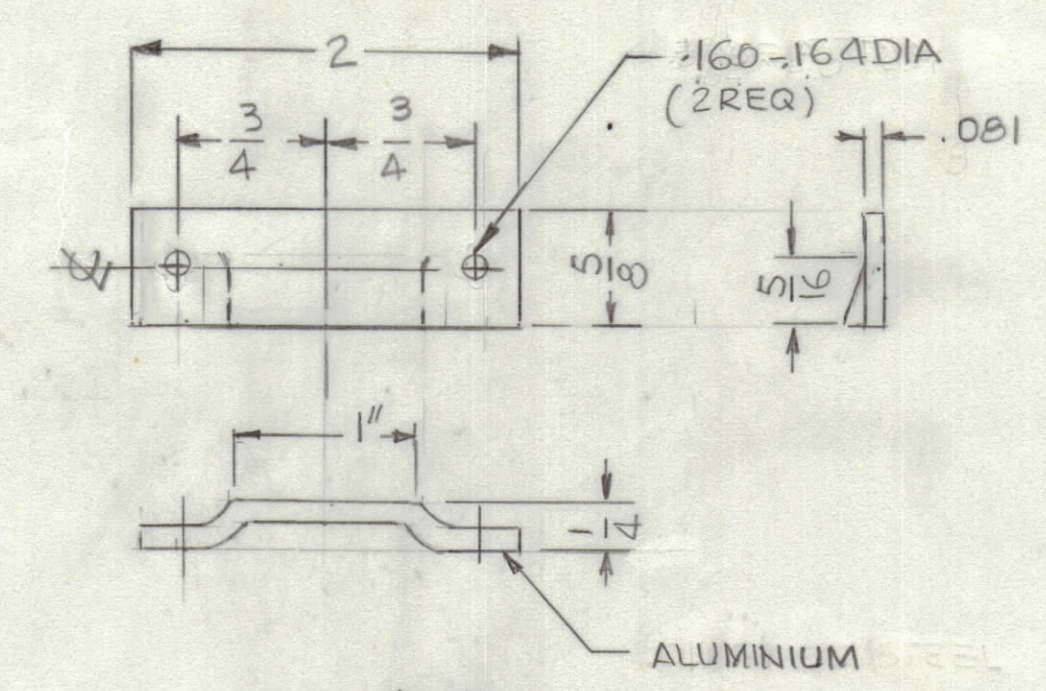
5	TOC-25	
3	TOC-24	
QTY / UNIT	MODEL USED ON	ASS'Y NO.
APPLICATION		
CODE		
<small>NOTICE TO PERSONS RECEIVING THIS DRAWING THE TECHNICAL MATERIEL CORPORATION claims proprietary right in the material disclosed herein. This drawing is issued in confidence for engineering information only and may not be reproduced or used to manufacture anything shown hereon without permission from THE TECHNICAL MATERIEL CORPORATION to the user. This drawing is loaned for mutual assistance and is subject to recall at any time.</small>		

REVISIONS					
E.M.N.O.	DRAFT	CHKD	ZONE	LTR	DATE
				X1	
				Ø	ORIGINAL RELEASE
					1-10-77



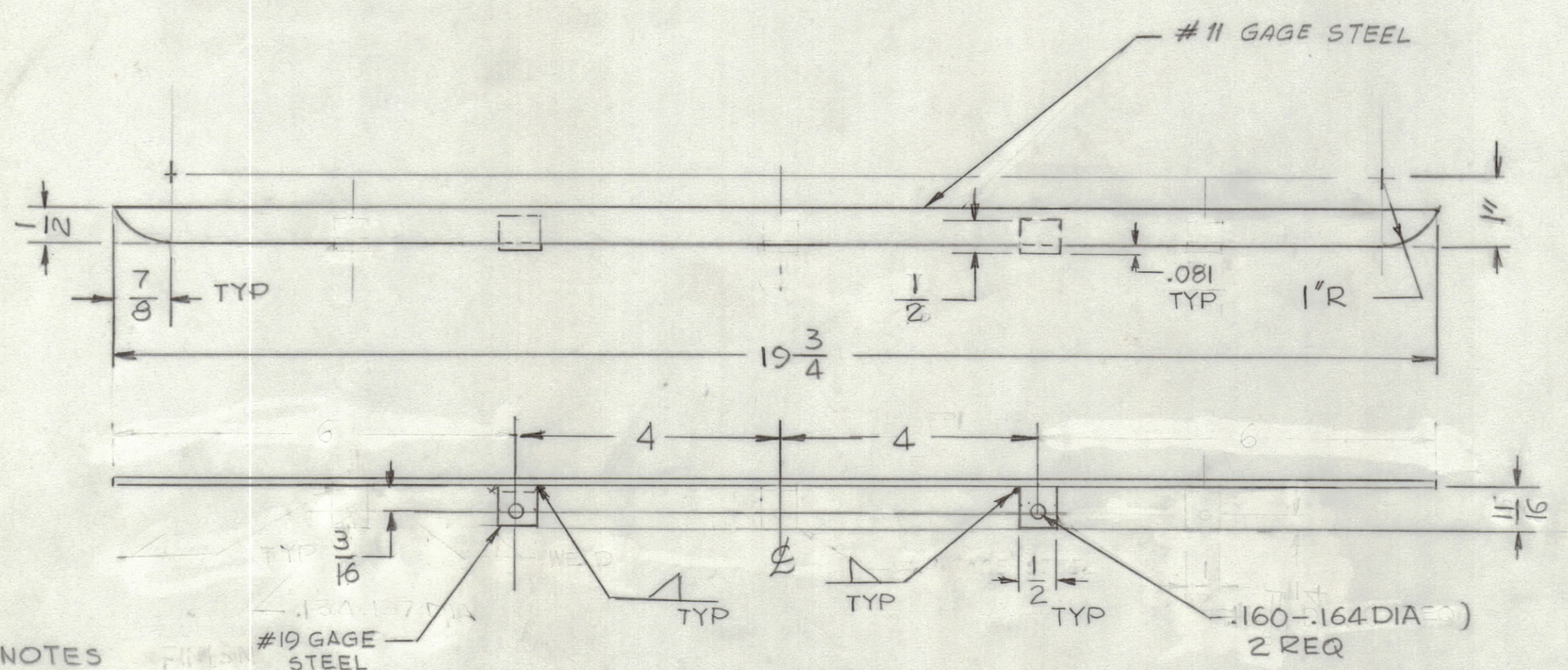
FINISH NOTES:
 1- S404 YEL IRIDITE
 2- S114 ZINC CHROMATE PRIMER
 3- S521 TMC GRAY TEXTURED PAINT

DETAIL "A"
 2 REQ



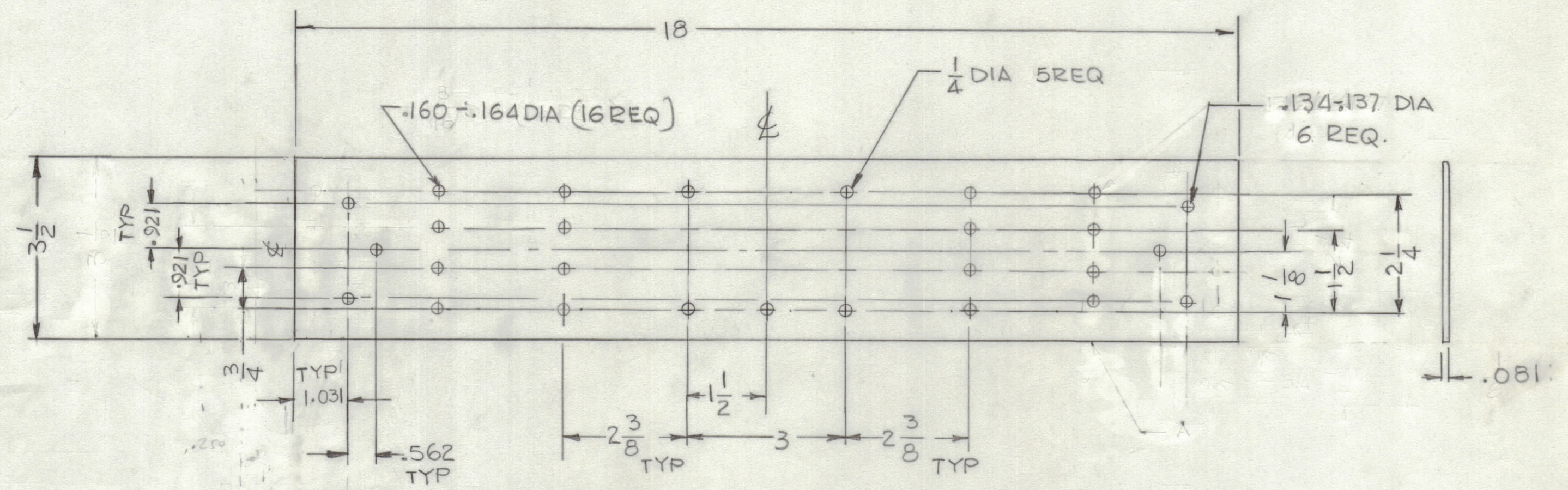
FINISH NOTES
 1- S404 YEL IRIDITE
 2- S114 ZINC CHROMATE PRIMER
 3- S521 TMC GRAY TEXTURED PAINT

DETAIL "D"
 2 REQ



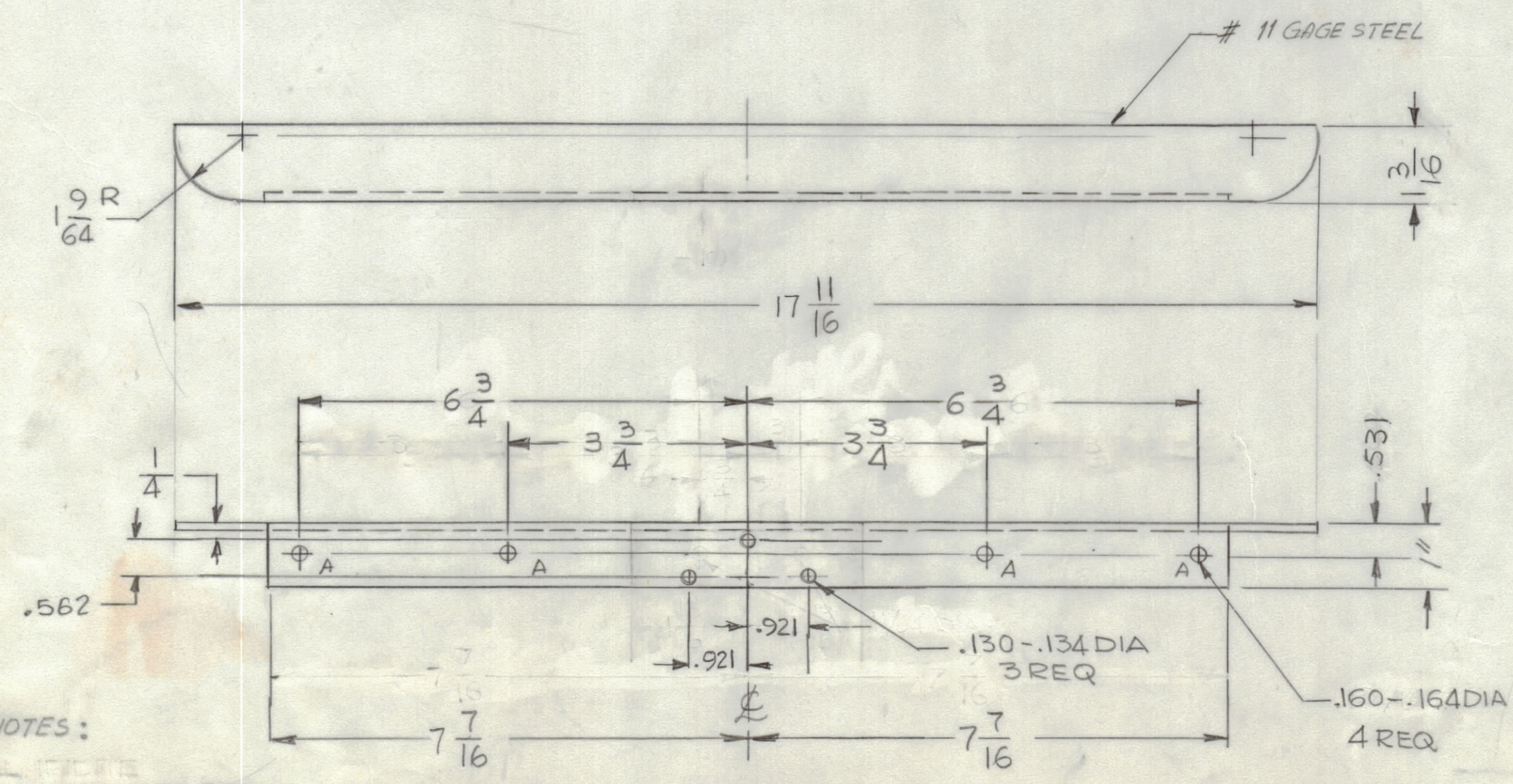
FINISH NOTES
 1- S404 YEL IRIDITE
 2- S114 ZINC CHROMATE PRIMER
 3- S521 TMC GRAY TEXTURED PAINT

DETAIL "B"
 2 REQ



FINISH NOTES
 1- S404 YEL IRIDITE
 2- S114 ZINC CHROMATE PRIMER
 3- S521 TMC GRAY TEXTURED PAINT

DETAIL "E"
 2 REQ



FINISH NOTES:
 1- S404 YEL IRIDITE
 2- S114 ZINC CHROMATE PRIMER
 3- S521 TMC GRAY TEXTURED PAINT

DETAIL "C"
 4 REQ

A - NO. 8 DRILL
 (.199 DIA 6 REQ)

QTY / UNIT	MODEL USED ON	ASS'Y NO.
5	TOC-25	
3	TOC-24	

APPLICATION
 CODE

QTY. REQ.	ITEM	PART NO.	DESCRIPTION	SYMBOL
			LIST OF MATERIAL	
			THE TECHNICAL MATERIEL CORP. MAMARONECK, NEW YORK	
			CASE TRANSIT OPERATING (DETAIL)	
			SIZE	CODE IDENT NO. DWG NO.
			D	82679
			SCALE 1:2	SHEET 4 OF 4

QTY. REQ.	ITEM	PART NO.	DESCRIPTION	SYMBOL
			LIST OF MATERIAL	
			THE TECHNICAL MATERIEL CORP. MAMARONECK, NEW YORK	
			CASE TRANSIT OPERATING (DETAIL)	
			SIZE	CODE IDENT NO. DWG NO.
			D	82679
			SCALE 1:2	SHEET 4 OF 4

QTY. REQ.	ITEM	PART NO.	DESCRIPTION	SYMBOL
			LIST OF MATERIAL	
			THE TECHNICAL MATERIEL CORP. MAMARONECK, NEW YORK	
			CASE TRANSIT OPERATING (DETAIL)	
			SIZE	CODE IDENT NO. DWG NO.
			D	82679
			SCALE 1:2	SHEET 4 OF 4

UNLESS OTHERWISE SPECIFIED DIMENSIONS ARE IN INCHES AND INCLUDE CHEMICALLY APPLIED OR PLATED FINISHES

DECIMALS	FRACTIONS
.X ± .05	± 1/64
.XX ± .01	ANGLES ± 0° - 30'
.XXX ± .005	

DATE	DATE	DATE	DATE
7/10/77			

NOTICE TO PERSONS RECEIVING THIS DRAWING
 THE TECHNICAL MATERIEL CORPORATION claims proprietary right in the material disclosed hereon. This drawing is issued in confidence for engineering information only and may not be reproduced or used to manufacture anything shown hereon without permission from THE TECHNICAL MATERIEL CORPORATION to the user. This drawing is loaned for mutual assistance and is subject to recall at any time.