

THE CONTENTS OF THIS DRAWING ARE THE EXCLUSIVE PROPERTY OF THE TECHNICAL MATERIEL CORP. ITS UNAUTHORIZED USE OR REPRODUCTION IN WHOLE OR IN PART IS STRICTLY FORBIDDEN.

REQ. PER UNIT

MODEL

TER-5K/600

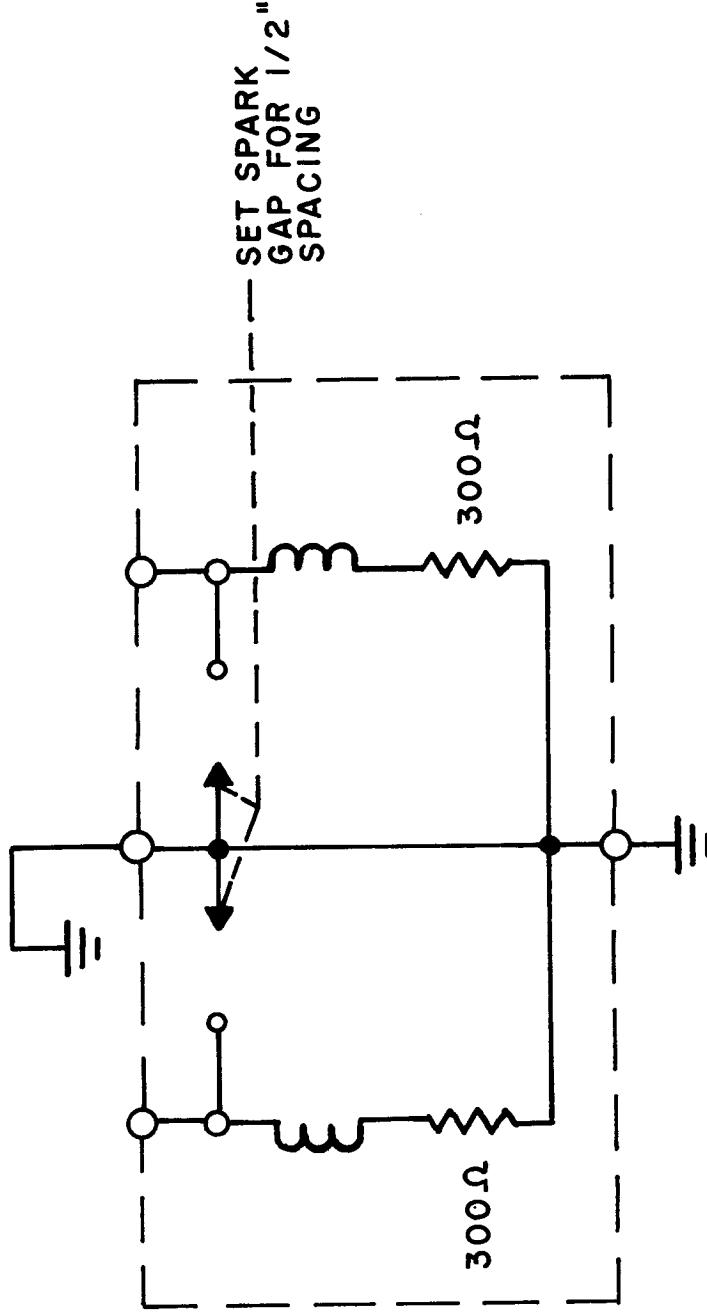
USED ON

ASSY. NO.

CK-605

DATE

9/17/62



REQ. ITEM	PART NO.	DESCRIPTION	SYMBOL
		THE TECHNICAL MATERIEL CORP. MAMARONECK, NEW YORK	
		DIAGRAM, SCHEMATIC	
		TER-5K-600	
		J.A.B. <i>Hde</i>	<i>BP</i>
		DRAWN	FINAL APPROVAL
		<i>QB</i>	<i>BP</i>
		CHECKED	CK-605
		ELEC. DES. APP.	
		MECH. DES. APP.	
		FINISH & SPEC. NO.	
		SCALE:	
		UNLESS OTHERWISE SPECIFIED:	
		DIMENSIONS ARE IN INCHES	
		TOLERANCES ON	
		FRAC. ± 1/64 DEC. ± .005 ANGLES ± 1/2°	
		REMOVE ALL BURRS AND SHARP EDGES	
		WILL BE CAUSE FOR REJECTION.	
		MAXIMUM ALLOWABLE TOLERANCES HAVE	
		BEEN DETERMINED AND ANY DEVIATIONS	
		TYPE & TEMPER	
		HEAT TREAT. SPEC.	
		MATERIAL	
		STOCK SIZE	

THE CONTENTS OF THIS DRAWING ARE THE EXCLUSIVE PROPERTY OF THE TECHNICAL MATERIEL CORP. ITS UNAUTHORIZED USE FOR REPRODUCTION IN WHOLE OR IN PART IS STRICTLY FORBIDDEN.

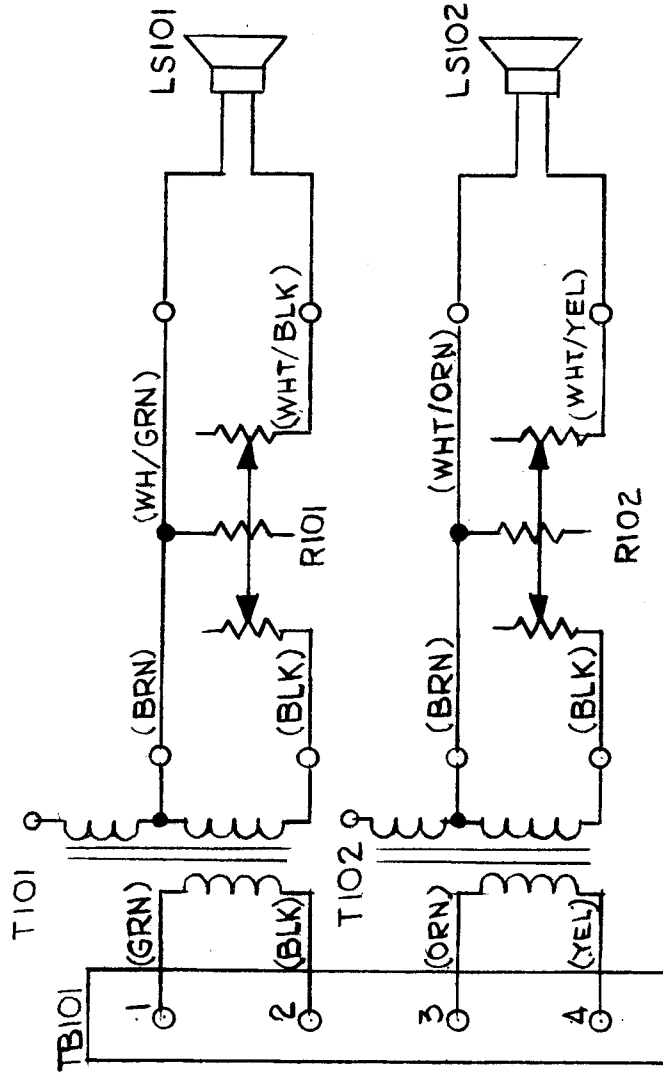
REQ.  
PER  
UNIT  
1

MODEL  
LSP-11

USED ON  
ASSY. NO.  
DATE  
2-23-63

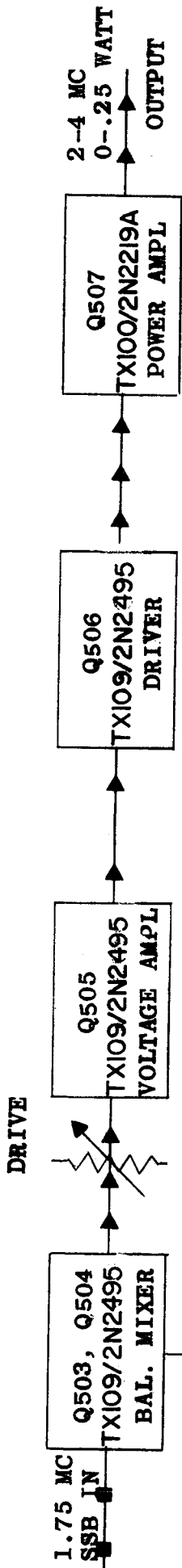
CK-623

A



REQ. ITEM	PART NO.	STURMER DESCRIPTION	SYMBOL
		THE TECHNICAL MATERIEL CORP. MAMARONECK. NEW YORK	
		SCHEMATIC DIAGRAM	
		LSP-11	
		MATERIAL	
		DRAWN G.D.L.	
		CHECKED	FINAL APPROVAL
		ELC. DES. APP. MECH. DES. APP.	
		FINISH & SPEC. NO.	CK-623 A
		DATE 4-24-63	
		CH. NO. 8680	
		CHECKER JMY	
		ENG. APP. KSA	
		SCALE	
		DESCRIPTION	
		UNLESS OTHERWISE SPECIFIED DIMENSIONS ARE IN INCHES AND INCLUDE CHEMICALLY APPLIED OR PLATED FINISHES	
		TOLERANCES	
		DECIMALS	
		.X ± .05	FRACTIONS ± 1/64
		.XX ± .01	ANGLES ± 0° 30'
		.XXX ± .005	
		CODE	
		TYPE & TEMPER HEAT TREAT. SPEC.	

REQ. PER UNIT	USED ON
	ASSY. NO. DATE
	CK-661



1.75 MC SSB IN

Q503, Q504  
TX109/2N2495  
BAL. MIXER

DRIVE

Q505  
TX109/2N2495  
VOLTAGE AMPL.

Q506  
TX109/2N2495  
DRIVER

Q507  
TX100/2N2219A  
POWER AMPL.

OUTPUT

2-4 MC  
0-.25 WATT

Q502  
TX09/2N2495  
BUFFER

3.750  
to  
5.750

Q501  
TX109/2N2495  
OSCILLATOR

F1  
F2

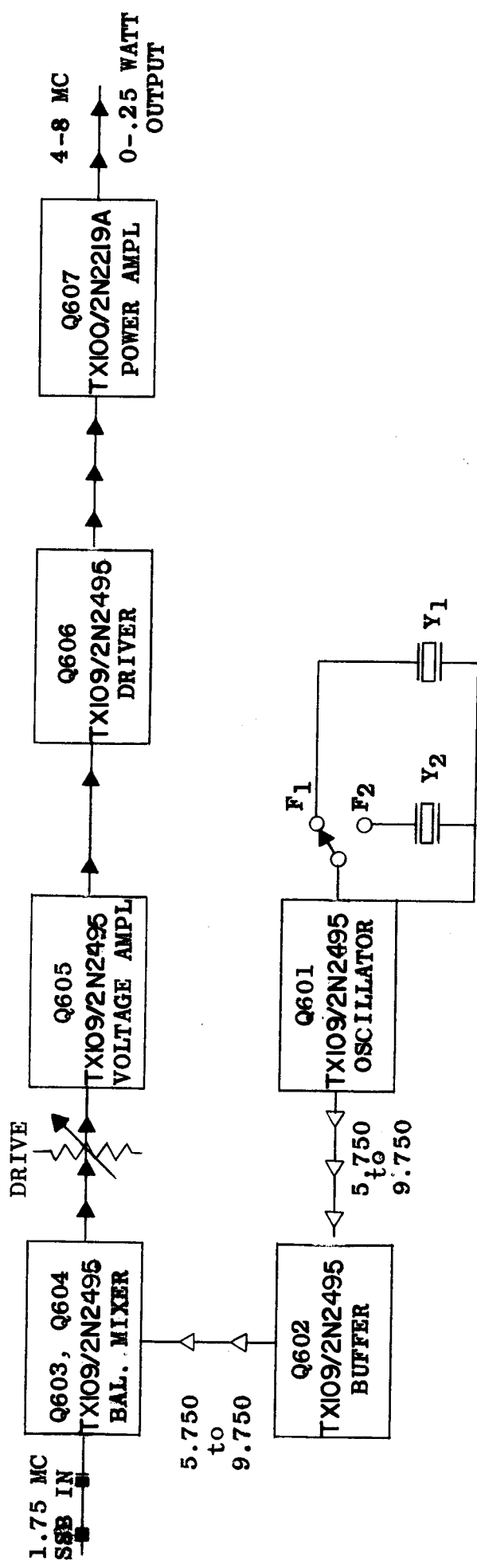
Y1  
Y2

- INTERMEDIATE FREQUENCY - 1.75 MC
- ▲ R. F. FREQUENCY - 2-4 MC
- △ INJECTION FREQUENCY - 3.750-5.750 MC

-12 VDC to Q501 thru Q506  
+12 VDC to Q505 and Q506  
-40 VDC to Q507

REQ. ITEM	PART NO.	DESCRIPTION	SYMBOL
15082	14937	Q501	
14937	13897	Q505	
4-21-64	11854	Q506	
8-13-64	11341	Q507	
5-1-64		Q502	
		Q503, Q504	
		Q505	
		Q506	
		Q507	
THE TECHNICAL MATERIEL CORP. MAMARONECK, NEW YORK			
BLOCK DIAGRAM, XMTR CONVERTER			
TIRT-1, 2-4 MC			
DRAWN		WAP 1/6/64	PK
CHECKED		12/24/63	BP
FINAL APPROVAL			
TYPE & TEMPER.		HEAT TREAT. SPEC.	FINISH & SPEC. NO.
MATERIAL		ENG. APP.	MECH. DES. APP.
SCALE		DATE	CH. NO. DRAFTS
UNLESS OTHERWISE SPECIFIED		DIMENSIONS ARE IN INCHES AND INCLUDE	
CHEMICALLY APPLIED OR PLATED FINISHES		FRACTIONS	
		XX ± .01	
		XXX ± .005	
TOLERANCES		CODE	
		A	

REQ. PER UNIT	MODEL	USED ON
	TTR-2	ASS'Y. NO.
		DATE
		CK-662 D

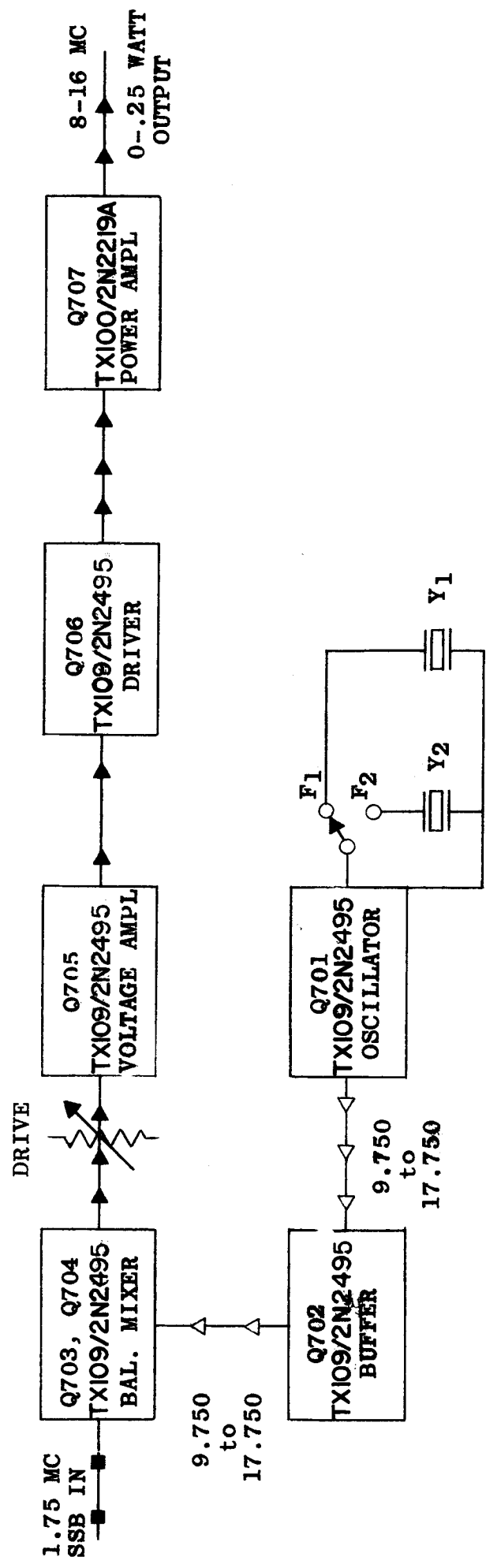


-12 VDC to Q601 thru Q606  
 +12 VDC to Q605 and Q606  
 -40 VDC to Q607

—■— INTERMEDIATE FREQUENCY - 1.75 MC  
 —▲— R. F. FREQUENCY - 4-8 MC  
 —△— INJECTION FREQUENCY - 5.750-9.750 MC

SYM	DESCRIPTION	DATE	CH. NO.	DRAFTS	CHECKER	ENG. APP.	REQ. ITEM	PART NO.	KOHM/PALMER DESCRIPTION	SYMBOL	
D	ALL 2N2495 WERE 2N2496	11/2/65	15082	AVV	QPS				THE TECHNICAL MATERIEL CORP. MAMARONECK. NEW YORK		
C	ALL 2N2496 WAS 2N2084	11/9/65	14937	AVV	QPS				BLOCK DIAGRAM, XMTR CONVERTER		
B	TX109/2N2084 WAS 2N2084 (5PL) TX100/2N2219A WAS 2N2219 (1PL)	4-21-65	13897	RF	QPS				TTRT-2, 4-8 MC		
A	"DRIVE" SYM. RELOCATED	5-1-64	11341	ATB	QPS						
	UNLESS OTHERWISE SPECIFIED DIMENSIONS ARE IN INCHES AND INCLUDE CHEMICALLY APPLIED OR PLATED FINISHES	SCALE		TYPE & TEMPER		HEAT TREAT. SPEC.		DRAWN		CHECKED	
	DECIMALS							MAR 1/6/64		RF	
	FRACTIONS							ELEC. DES. APP.		MECH. DES. APP.	
	TOLERANCES	A						FINISH & SPEC. NO.		CK-662 D	
	.X ± .05										
	.XX ± .01										
	.XXX ± .005										
	ANGLES										
	± 0° 30'										

REQ. PER UNIT	MODEL	USED ON
	TTRT-3	ASSY. NO.
		DATE
		CK-663 D



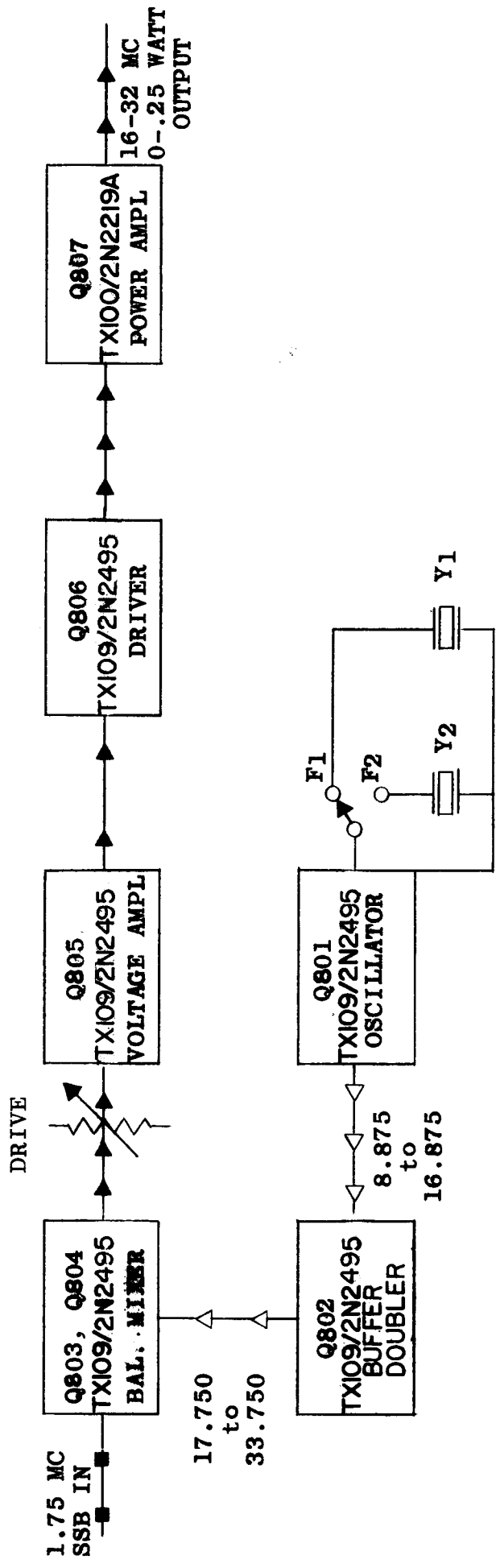
-12 VDC to Q701 thru Q706  
 +12 VDC to Q705 and Q706  
 -40 VDC to Q707

- INTERMEDIATE FREQUENCY - 1.75 MC
- ▶ R. F. FREQUENCY - 8-16 MC
- ▷ INJECTION FREQUENCY - 9.750-17.750 MC

SYM	DESCRIPTION	CH. NO.	DRAFTS	CHECKER	ENG. APP.	SCALE	DATE	REQ. ITEM	PART NO.	SYMBOL
D	ALL 2N2495 AS WERE 2N2496	15082	AVN	QCB			12/65		K&H/PALMER	
C	ALL 2N2496 WERE 2N2084 OR 2N2495	14937	AVN	SL			12/65		THE TECHNICAL MATERIEL CORP. MAMARONECK. NEW YORK	
B	TX109 ADJ. TO 2N2084 (PL) TX104 ADJ. TO 2N2495 (PL); TX100/2N2219A WAS 2N2219 (PL)	13897	SL	QCB			4-21-65		BLOCK DIAGRAM, XMTN CONVERTER	
A	DRIVE SYM. RELOCATED ON Q705 TO 2N2495 WAS 2N2084	11341	MTB	QCB			5-1-64		TTRT-3, 8-16 MC	
UNLESS OTHERWISE SPECIFIED DIMENSIONS ARE IN INCHES AND INCLUDE CHEMICALLY APPLIED OR PLATED FINISHES										
TOLERANCES FRACTIONS ANGLES										
DECIMALS X ± .05 ± 1/64 ± .01 ± 0° 30'										
DRAWN 1/6/64 WAP										
CHECKED 12/24/63 JDE										
FINAL APPROVAL BP										
FINISH & SPEC. NO. CK-663 D										

CK-664 E

REQ. PER UNIT	MODEL	USED ON
TIRT-4	TIRT-4	ASSY. NO.
		DATE



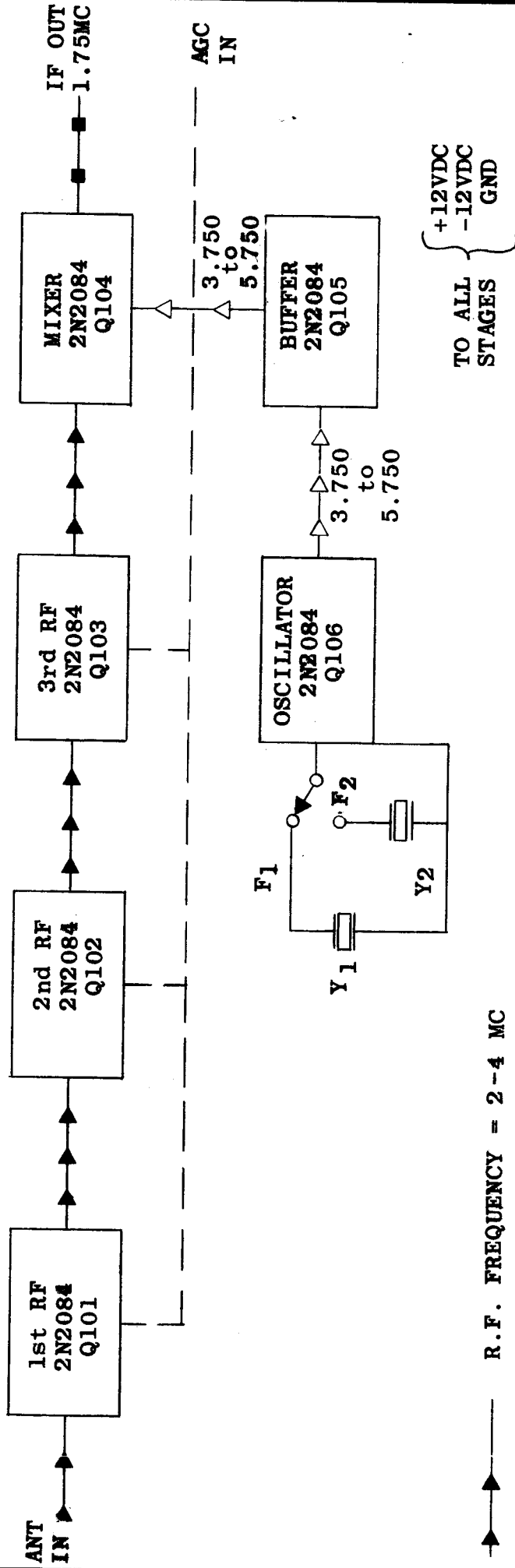
-12 VDC to Q801 thru Q806  
 +12 VDC to Q805 and Q806  
 -40 VDC to Q807

—■— INTERMEDIATE FREQUENCY - 1.75 MC  
 —▶— R. F. FREQUENCY - 16-32 MC  
 —△— INJECTION FREQUENCY - 17.750 to 33.750

SYM	DESCRIPTION	CH. NO.	DATE	CHECKER	ENG. APP.	SCALE	TOLERANCES	FRACTIONS	
E	ALL 2N2495 WERE 2N2496	12/6	1/26	K.V.V.	9/16				
D	ALL 2N2496 WERE 2N2084 OR 2N2495	14937	1/165	K.V.V.	9/16				
C	TX109 ADD. TO 2N1084 (SPL.) TX104 AND TO 2N2495 (2PL.) TX100/2N219A WAS 2N219A (1PL.)	13897	4-21-65	J.F.	9/16				
B	ALL SYM. WERE 500 SERIES	11850	8-13-64	MTB	9/16				
A	DRIVE SYM. RELOCATED ON Q5056 2N2495 WAS 2N2084	11341	5-1-64	MTB	9/16				
UNLESS OTHERWISE SPECIFIED DIMENSIONS ARE IN INCHES AND INCLUDE CHEMICALLY APPLIED OR PLATED FINISHES									
TOLERANCES									
.XX ± .01									
.XXX ± .005									
FRACTIONS									
± 1/64									
ANGLES									
± 0° 30'									
CODE									
A									
TYPE & TEMPER		HEAT TREAT. SPEC.		CHECKED		DRAWN		FINAL APPROVAL	
MATERIAL				17/24/63		WAP 1/6/64		RK	
STOCK SIZE									
PART NO.		REQ. ITEM		DESCRIPTION		SYMBOL			
KOHIN/PALMER				THE TECHNICAL MATERIEL CORP. MAMARONECK, NEW YORK					
TIRT-4, 16-32 MC				BLOCK DIAGRAM, TRAN CONVERTER					
								CK-664 E	

CK-665

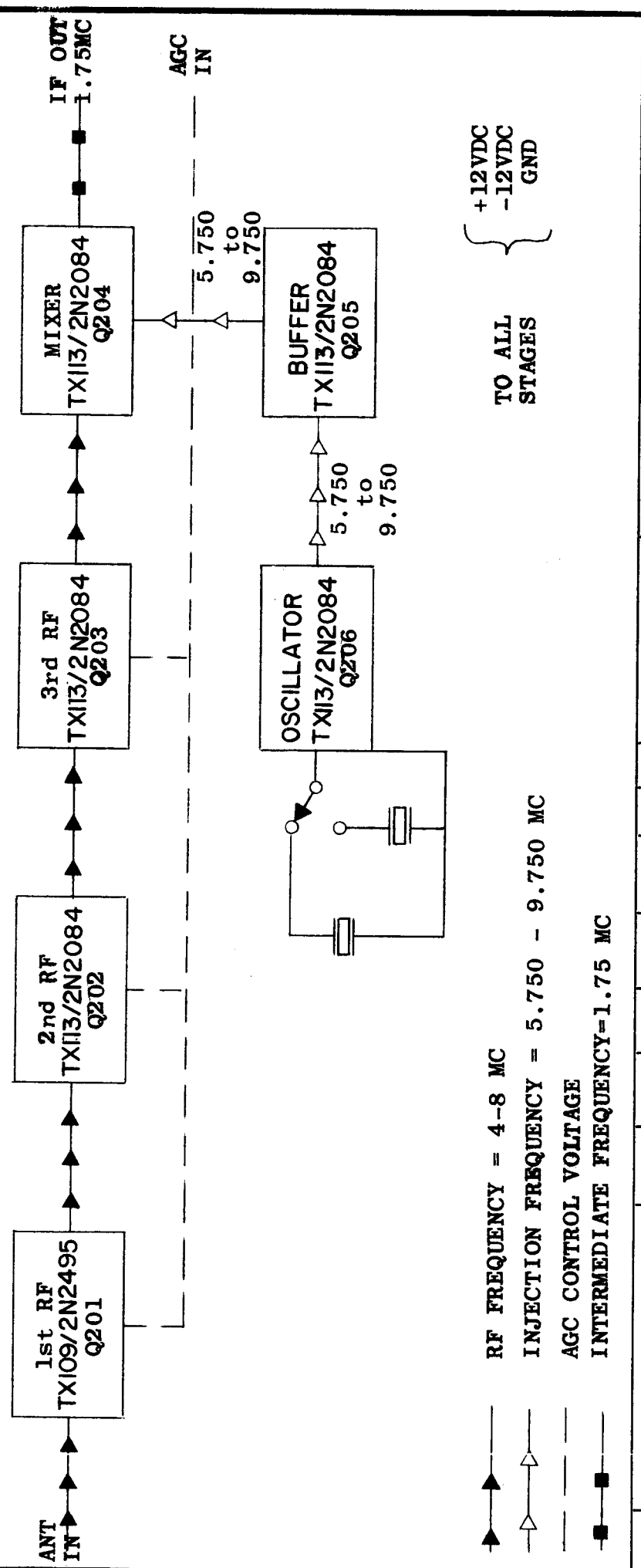
REQ. PER UNIT	USED ON
TTRR-1	ASSY. NO.
	DATE
	10-30-63



——— R. F. FREQUENCY = 2-4 MC  
 - - - INJECTION FREQUENCY = 3.750 - 5.750 MC  
 ——— AGC CONTROL VOLTAGE  
 —■— INTERMEDIATE FREQUENCY = 1.75 MC

REQ. ITEM	PART NO.	DESCRIPTION	SYMBOL
		PALMER	
		THE TECHNICAL MATERIEL CORP. MAMARONECK. NEW YORK	
		BLOCK DIAGRAM RCYR CONVERTER	
		TTRR-1 2-4 MC	
		W.A. PALMER 11/18/63	
		DRAWN	CHECKED
		W.A. PALMER 11/18/63	FINAL APPROVAL
		ELEC. DES. APP. MECH. DES. APP.	CK-665
		FINISH & SPEC. NO.	
		TYPE & TEMPER	HEAT TREAT. SPEC.
		MATERIAL	
		DATE	CH. NO.
		DRAFTS	CHECKER
		ENG. APP.	
		SCALE	
		DESCRIPTION	
		UNLESS OTHERWISE SPECIFIED	
		DIMENSIONS ARE IN INCHES AND INCLUDE	
		CHEMICALLY APPLIED OR PLATED FINISHES	
		TOLERANCES	
		FRACTIONS	
		DECIMALS	
		XX ± .01	± 1/64
		XXX ± .005	ANGLES
			± 0° 30'
		CODE	A

REQ. PER UNIT	MODEL	USED ON	
TTR-2	TTR-2	ASSY. NO.	DATE
		10-30-63	10-30-63
		CK-666 B	

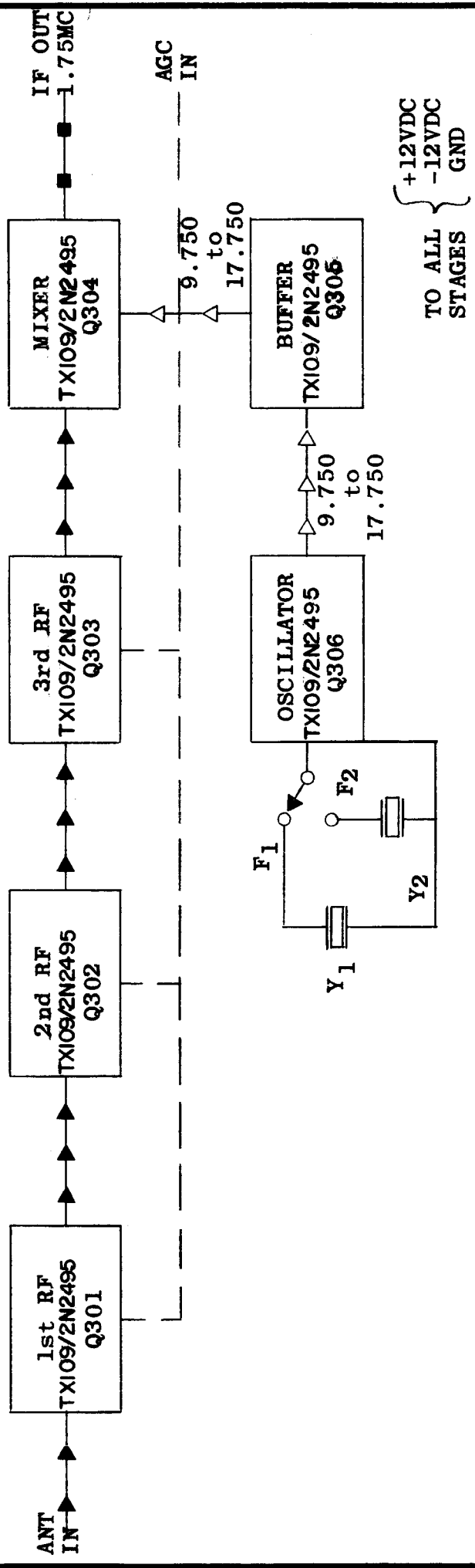


SYM	DESCRIPTION	DATE	CH. NO.	DRAFTS	CHECKER	ENG. APP.	SCALE	CODE	TOLERANCES
B	TX109/2N2495 WERE 2N2496	11/2/65	15082	H.V.	<i>[Signature]</i>				FRACTIONS ± 1/64 ANGLES ± 0° 30'
A	TX113/2N2084 AND TX109/2N2496 WAS 2N2084	10/8/65	14931	H.V.	<i>[Signature]</i>				DECIMALS ± .05 ± .01 ± .005
UNLESS OTHERWISE SPECIFIED DIMENSIONS ARE IN INCHES AND INCLUDE CHEMICALLY APPLIED OR PLATED FINISHES									
TOLERANCES		A							
REQ. ITEM		PART NO.		DESCRIPTION		SYMBOL			
FAIRMER				THE TECHNICAL MATERIEL CORP. MAMARONECK, NEW YORK					
BLOCK DIAGRAM, RCVR CONVERTER		TTR-2 4-6 MC		DRAWN JDA 11/8/65		CHECKED [Signature]			
MATERIAL		FINISH & SPEC. NO.		ELEC. DES. APP. MECH. DES. APP.		FINAL APPROVAL			
TTR-2 4-6 MC		CK-666 B		W.A. PALMER 11/18/63		KOHN			



REQ. PER UNIT	MODEL	USED ON ASSY. NO.	DATE
	TTRR-3		10-30-63

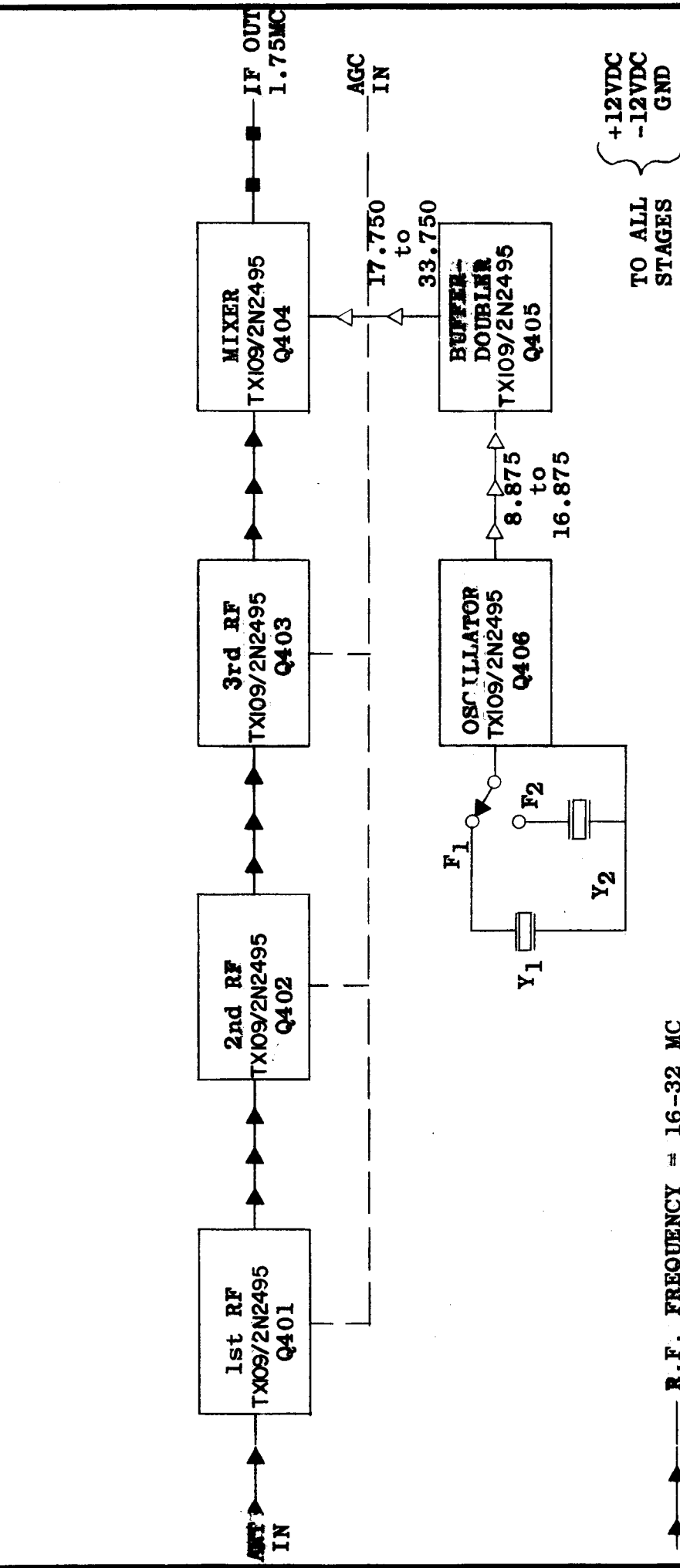
CK-667 B



———▶ R. F. FREQUENCY = 8-16 MC  
 ———▶ INJECTION FREQUENCY = 9.750 - 17.750 MC  
 ———▶ AGC CONTROL VOLTAGE  
 ———▶ INTERMEDIATE FREQUENCY = 1.75 MC

REQ. ITEM	PART NO.	DESCRIPTION	SYMBOL
		Palmer	
		THE TECHNICAL MATERIEL CORP. MAMARONECK. NEW YORK	
		BLOCK DIAGRAM, RCVR CONVERTER	
		TTRR-3 8-16	
		10-30-63	11/18/63
		W. A. PALMER 4/18/63	KOHN
		ELEC. DES. APP. MECH. DES. APP.	CK-667 B
		FINISH & SPEC. NO.	
		TYPE & TEMPER	HEAT TREAT. SPEC.
		MATERIAL	
		STOCK SIZE	
		SCALE	
		DATE	CH. NO.
		11/2/65	15082
		10/18/65	14937
		DESCRIPTION	DESCRIPTION
		ALL 2N2495 WERE 2N2496	
		ALL 2N2496 WERE 2N284 OR 2N2495	
		UNLESS OTHERWISE SPECIFIED DIMENSIONS ARE IN INCHES AND INCLUDE CHEMICALLY APPLIED OR PLATED FINISHES	
		TOLERANCES	FRACTIONS
		.X ± .05	± 1/64
		.XX ± .01	ANGLES
		.XXX ± .005	± 0° 30'
		CODE	A

REQ. PER UNIT	MODEL	USED ON	DATE
	TTR-4	ASSY. NO.	10-30-63
		CK-668 D	



—▶— R.F. FREQUENCY = 16-32 MC  
 —◁— INJECTION FREQUENCY = 17.750 - 33.750 MC  
 --- AGC CONTROL VOLTAGE  
 —■— INTERMEDIATE FREQUENCY = 1.75 MC

+12VDC  
-12VDC  
GND  
TO ALL STAGES

SYM	DESCRIPTION	DATE	CH. NO.	DRAFTS	CHECKER	ENG. APP.	SCALE	CODE
D	ALL 2N2495 WERE 2N2496	11/2/65	15082	AKV	AKV			
C	ALL 2N2496 WERE 2N2084 OR 2N2495	10/7/65	14937	AKV	AKV			
B	2ND & 3RD RF WERE 2N2084	8.12.64	11833	NB	NB			
A	ON Q402, 3, 5, 6 { 2N2084 WAS 2N2495	5-1-64	11344	NB	NB			

REQ. ITEM	PART NO.	DESCRIPTION	SYMBOL
		PALMER	
		THE TECHNICAL MATERIEL CORP. MAMARONECK. NEW YORK	
		BLOCK DIAGRAM, RCVR. CONVERTER	
		TTR-4 16-32 MC	
		W. A. ALAMOR 11/18/63	
		10-30-63	
		11/18/63	
		W. A. ALAMOR 11/18/63	
		11/18/63	
		KOHN	
		11/18/63	
		ELEC. DES. APP. MECH. DES. APP.	
		FINISH & SPEC. NO.	
		HEAT TREAT. SPEC.	
		MATERIAL	
		STOCK SIZE	
		TYPE & TEMPER	
		CHECKED	
		FINAL APPROVAL	
		CK-668 D	

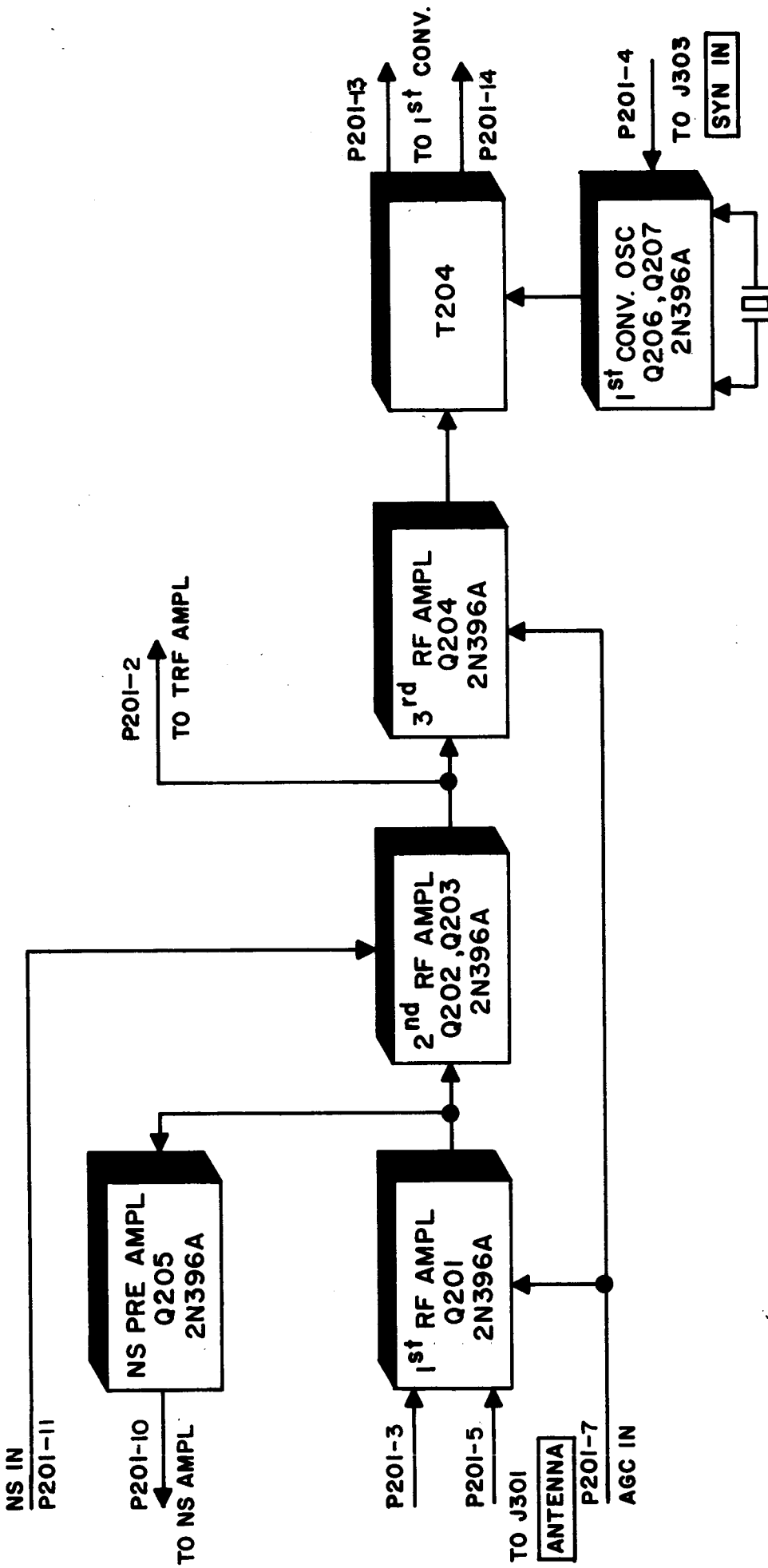


THE CONTENTS OF THIS DRAWING ARE THE EXCLUSIVE PROPERTY OF THE TECHNICAL MATERIEL CORP. ITS UNAUTHORIZED USE FOR REPRODUCTION IN WHOLE OR IN PART IS STRICTLY FORBIDDEN.

REQ. PER UNIT: 1  
 MODEL: VLRA-1  
 ASSY. NO.: AX-432  
 USED ON: DATE: 6-20-63

CK 673

Ø



REF: CK-676

REQ. ITEM	PART NO.	M. GELLMAN DESCRIPTION	SYMBOL
Ø		THE TECHNICAL MATERIEL CORP. MAMARONECK. NEW YORK	
X1		DIAGRAM, BLOCK (RF MODULE)	
SYM			
	5-11-64	A.M. @	
	3-11-64	98	
	DATE	CH. NO.	DRAFTS
			CHECKER
			ENG. APP.
			SCALE
			UNLESS OTHERWISE SPECIFIED DIMENSIONS ARE IN INCHES AND INCLUDE CHEMICALLY APPLIED OR PLATED FINISHES
			FRACTIONS ± 1/64 ANGLES ± 0° 30'
			TOLERANCES A
			DECIMALS .X ± .05 .XX ± .01 .XXX ± .005
			FINISH & SPEC. NO.
			TYPE & TEMPER
			HEAT TREAT. SPEC.
			MATERIAL
			STOCK SIZE
			ELC. DES. APP. MECH. DES. APP.
			CHECKED
			DRAWN
			FINAL APPROVAL
			CK 673 Ø

THE CONTENTS OF THIS DRAWING ARE THE EXCLUSIVE PROPERTY OF THE TECHNICAL MATERIEL CORP. ITS UNAUTHORIZED USE FOR REPRODUCTION IN WHOLE OR IN PART IS STRICTLY FORBIDDEN.

REQ. PER UNIT  
1

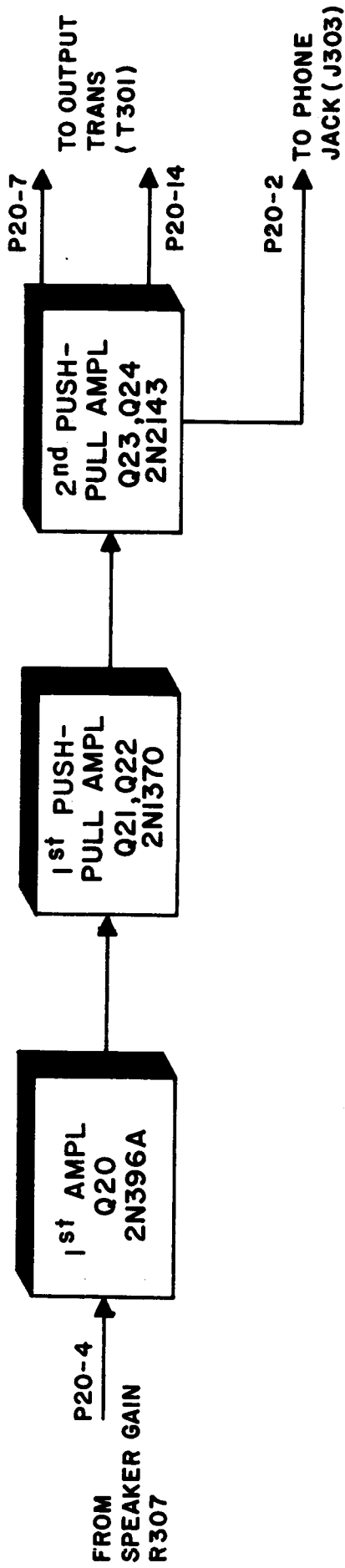
MODEL  
VLR-1

USED ON  
ASSY. NO.  
AX-431

DATE

6-21-63

CK 674 0



REF: CK-675

REQ. ITEM	PART NO.	M. GELLMAN	DESCRIPTION	SYMBOL
			THE TECHNICAL MATERIEL CORP. MAMARONECK, NEW YORK	
	STOCK SIZE		DIAGRAM, BLOCK (AF MODULE)	
	MATERIAL			
	TYPE & TEMPER		DRAWN	CHECKED
	HEAT TREAT. SPEC.		ELC. DES. APP.	MECH. DES. APP.
	FINISH & SPEC. NO.		FINAL APPROVAL	
SYM	DESCRIPTION	DATE	CH. NO.	DRAFTS
0	ORIGINAL RELEASE FOR PRODUCTION	5-11-64	0	A.M. (C)
	UNLESS OTHERWISE SPECIFIED DIMENSIONS ARE IN INCHES AND INCLUDE CHEMICALLY APPLIED OR PLATED FINISHES	SCALE		
	TOLERANCES	FRACTIONS	CODE	
	.X ± .05	± 1/64	A	
	.XX ± .01	ANGLES		
	.XXX ± .005	± 0° 30'		