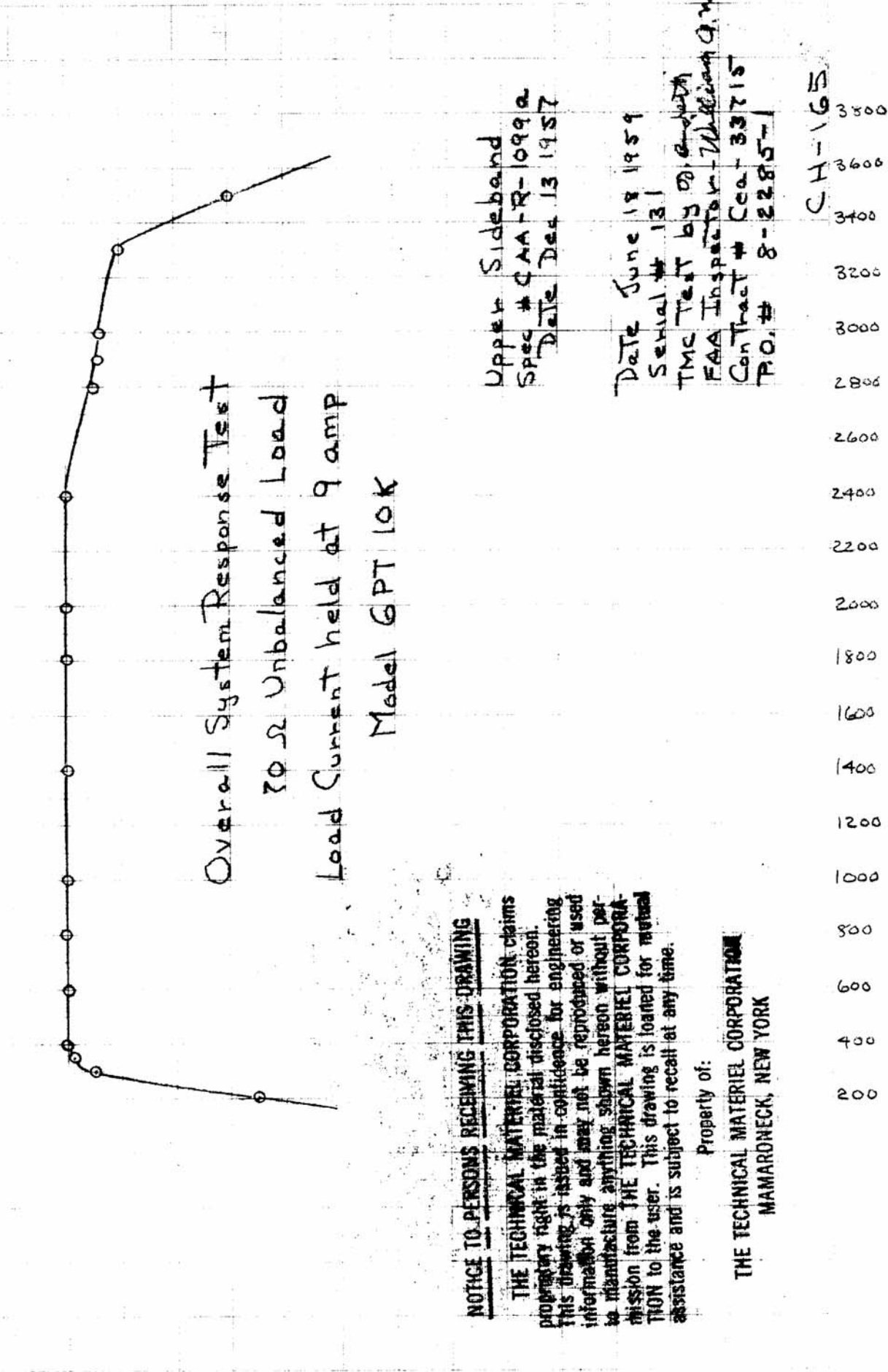


Audio Input Level dBm



Overall System Response Test  
 30 Ω Unbalanced Load  
 Load Current held at 9 amp  
 Model GPT 10K

NOTICE TO PERSONS RECEIVING THIS DRAWING

THE TECHNICAL MATERIEL CORPORATION claims proprietary right in the material disclosed hereon. This drawing is issued in confidence for engineering information only and may not be reproduced or used to manufacture anything shown hereon without permission from THE TECHNICAL MATERIEL CORPORATION to the user. This drawing is loaned for mutual assistance and is subject to recall at any time.

Property of:

THE TECHNICAL MATERIEL CORPORATION  
 MAMARONECK, NEW YORK

Upper Sideband  
 Spec # CAA-R-1099a  
 Date Dec 13 1957

Date June 18 1959  
 Serial # 131  
 TMC Test by D. G. Smith  
 FAA Inspector - William G. Walker  
 Contract # CA-33715  
 P.O. # 8-2285-1

3800  
3600  
3400  
3200  
3000  
2800  
2600  
2400  
2200  
2000  
1800  
1600  
1400  
1200  
1000  
800  
600  
400  
200

Freq. CPS

CH-165

F mc	Milimho's	Resistance	MMF
2.8	1.6	$\frac{1}{1.6} = 625 \Omega$	+ 4
4.0	1.6	$\frac{1}{1.6} = 625 \Omega$	+ 5
6.0	1.6	$\frac{1}{1.6} = 625 \Omega$	+ 6
8.0	1.65	$\frac{1}{1.65} = 606 \Omega$	+ 5
12	1.67	$\frac{1}{1.67} = 598 \Omega$	+ 4
16	1.85	$\frac{1}{1.85} = 550 \Omega$	+ 2
20	1.95	$\frac{1}{1.95} = 525 \Omega$	0
24	1.85	$\frac{1}{1.85} = 550 \Omega$	- 2
28	1.85	$\frac{1}{1.85} = 550 \Omega$	0

ALL MEASUREMENTS TAKEN WITH WAYNE KERR BRIDGE B801  
 600 Ω BAL LOAD USED FOR TEST  
 OF ALL GPT-10K TRANSMITTERS.

NOTICE TO PERSONS RECEIVING THIS DRAWING

THE TECHNICAL MATERIEL CORPORATION claims proprietary right in the material disclosed hereon. This drawing is issued in confidence for engineering information only and may not be reproduced or used to manufacture anything shown hereon without permission from THE TECHNICAL MATERIEL CORPORATION to the user. This drawing is loaned for mutual assistance and is subject to recall at any time.

Property of:  
 THE TECHNICAL MATERIEL CORPORATION  
 MAMARONECK, NEW YORK

ISSUE	ITEM	CHANGED FROM	DATE	CH. NO.	DRAFTS	CHECKER	ENG. APP.
TOLERANCES			SCALE:				
DEC. DIM. ±			MAXIMUM ALLOWABLE TOLERANCES HAVE BEEN DETERMINED AND ANY DEVIATIONS WILL BE CAUSE FOR REJECTION.				
FRAC. DIM. ±			REMOVE ALL BURRS AND SHARP EDGES				
ANGULAR DIM. ±							

REQ. PER UNIT	MODEL	PROJECT NO.	ASS'Y. NO.	DATE

USED ON

REQ. ITEM	PART NO.	DESCRIPTION	SYMBOL
THE TECHNICAL MATERIEL CORP. MAMARONECK, NEW YORK			
RF BRIDGE MEASUREMENTS			
OF DUMMY LOAD TER-5000-600			
TYPE & TEMPER	HEAT TREAT. SPEC.	DRAWN	CHECKED
		<i>WJ</i>	<i>QB</i>
FINISH & SPEC. NO.		ELEC. DES. APP.	MECH. DES. APP.
		<i>QB</i>	<i>QB</i>
CH-165			