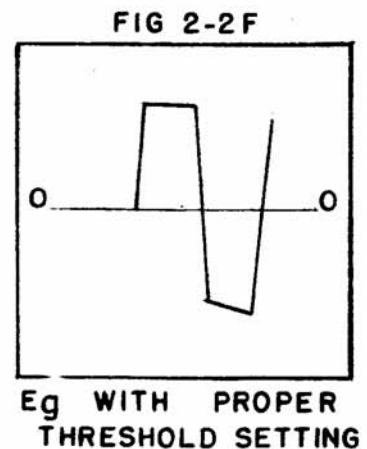
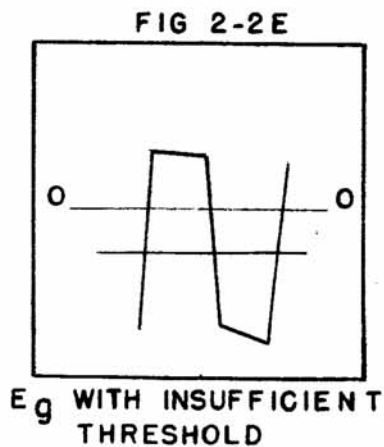
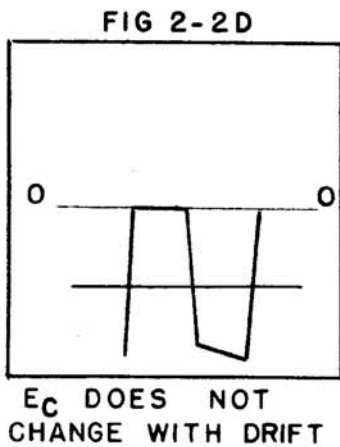
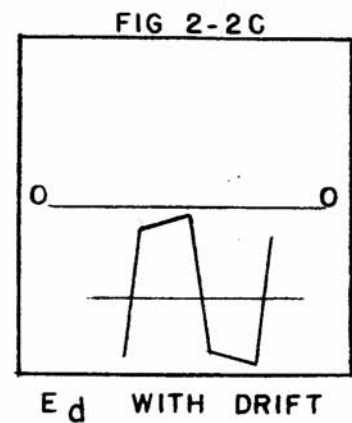
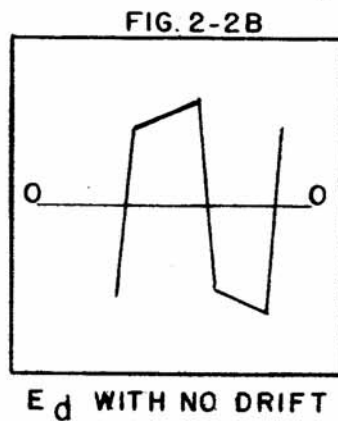
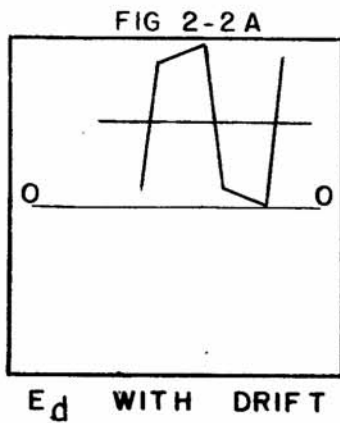
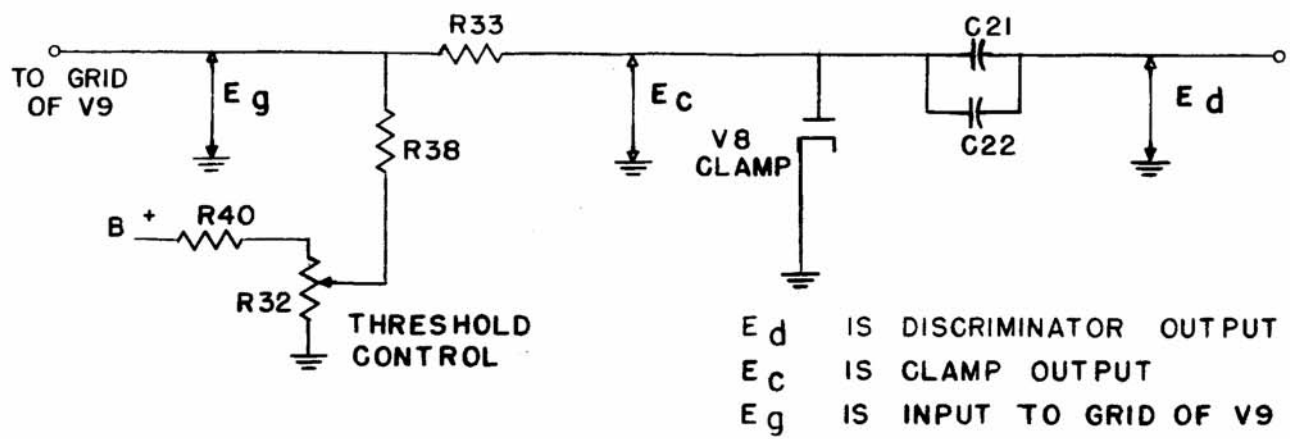


ILLUSTRATION OF THE CLAMP & THRESHOLD OPERATION:



NOTE:

( $E_g$  SEEN WHILE V9 IS REMOVED FROM SOCKET.)  
 ALL PATTERNS SEEN USING HIGH IMPEDANCE SCOPE  
 WITH DC AMPLIFIER (SUCH AS DUMONT 304 H  
 WITH 2507 PROBE)