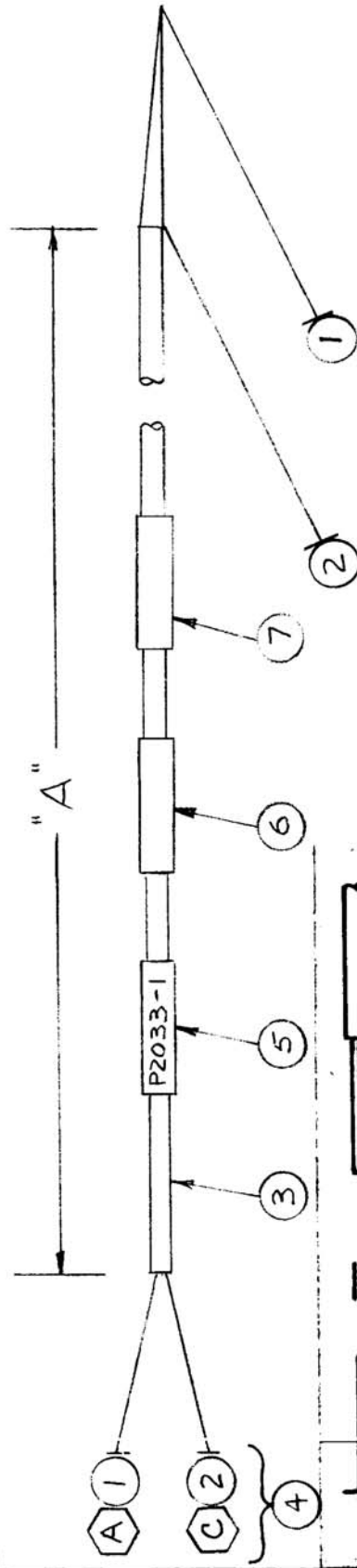


TMC PART NO.	"A"	ITEM NO. 6	ITEM NO. 7	USED ON	DATE
CA 974	181"	LA107-12-RTIA-UNIT #1	LA107-12-CA974	ASSY. NO.	11-18-64
CA974-2	65"	LA107-12-RTID-1	LA107-12-CA974-2	MODEL	
				COPA-2	CA 977
				REQ. UNIT	1



NOTE \* USE ITEM 11 FOR PINS A, C ON ITEM 4.  
 † CUT AS REQ.

THIS SYMBOL DENOTES END OF INSULATION AND NAIL DRIVING POINT. WIRE MUST BE STRIPPED 3/4" BEYOND THIS POINT AND TINNED 1/2" UNLESS OTHERWISE SPECIFIED.

WIRES SHOULD BE PLACED IN CABLE IN NUMERICAL SEQUENCE AS THEY APPEAR IN ITEM COLUMN BY CATEGORY.

1- ALL RF CABLES  
 2- ALL SHIELDED CABLES  
 3- ALL OTHERS  
 SPACE LACING APPROX. 3/4" APART

DETAIL - ITEM 4

REQ. ITEM	PART NO.	DESCRIPTION	SYMBOL
X 11	PX830-16-1	INSULATION, SLEEVING, ELECT.	
X 10	TA100-1	INS. TAPE, EL PLST	
X 9	CD101-1MW	CORD, NYLON, LACING	
X 8	BS100	SOLDER, TIN ALLOY	
1	SEE CHART	SLVG, MARKER, CABLE	
1	SEE CHART	SLVG, MARKER, CABLE	
1	LA107-12-P2033-1	SLVG, MARKER, CABLE	
1	PL247-1P	CONN., PLUG, MALE - 11/C	
† 3	PX100-1-166	INSULATION, SLVG, SIZE 6	
† 2	MWC24(7)U6	WIRE, ELEC, INSULATION	
† 1	MWC24(7)U4	WIRE, ELEC, INSULATION	

SYMBOL	DESCRIPTION	THE TECHNICAL MATERIEL CORP. MAMARONECK, NEW YORK	STOCK SIZE	MATERIAL	FINISH & SPEC. NO.	MECH. DES. APP.	MECH. DES. APP.
B	ADDED PART NO. CHART						
A	375 WAS - 12.2, 376 WAS - 12.24						
Ø	37 WAS - 12.23						
X1	ORIGINAL RELEASE FOR PRODUCTION						
	ITEM 4 DETAIL ADDED DASH NO'S ADDED TO ITEMS 5, 6, 7.						
SYM	DATE	CH. NO.	DRAFTS	CHECKER	ENG. APP.		
	3/14/66	15946	HLA	HLA			
	7/27/68	1974	H.V.				
	2/24/65						
	2-17-65						
	SCALE						
	UNLESS OTHERWISE SPECIFIED DIMENSIONS ARE IN INCHES AND INCLUDE CHEMICALLY APPLIED OR PLATED FINISHES						
	TOLERANCES						
	DECIMALS						
	.X ± .05						
	.XX ± .01						
	.XXX ± .005						
	FRACTIONS						
	± 1/64						
	ANGLES						
	± 0° 30'						
	TYPE & TEMPER	HEAT TREAT. SPEC.					
	BROWN	CHECKED					
	M.H.S.	JCB					
	RTIA-1 UNIT #1 TO FILTER ASSY						
	CABLE ASSY, SP						
	THE TECHNICAL MATERIEL CORP. MAMARONECK, NEW YORK						
	INSULATION, SLEEVING, ELECT.						
	INS. TAPE, EL PLST						
	CORD, NYLON, LACING						
	SOLDER, TIN ALLOY						
	SLVG, MARKER, CABLE						
	SLVG, MARKER, CABLE						
	SLVG, MARKER, CABLE						
	CONN., PLUG, MALE - 11/C						
	INSULATION, SLVG, SIZE 6						
	WIRE, ELEC, INSULATION						
	WIRE, ELEC, INSULATION						
	FINISH & SPEC. NO.						
	2-26-65						
	ELEC. DES. APP.						
	MECH. DES. APP.						
	FINAL APPROVAL						
	CA 974						
	B						