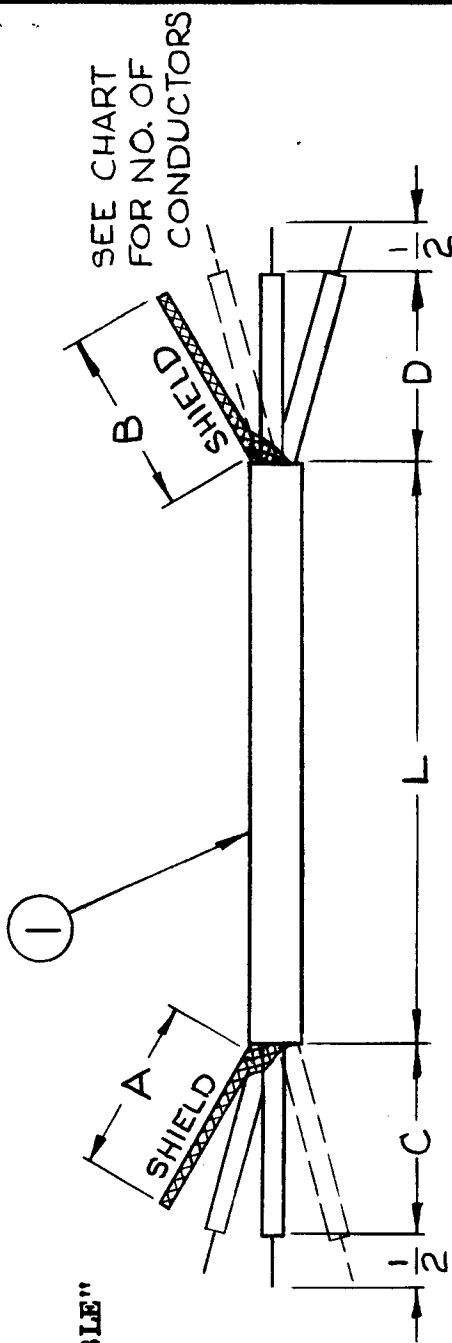


STANDARD DRAWING

REQ. PER UNIT	USED ON	MODEL	DATE
1		TTRR-1,2,3,4	8-10-63
			CA-808
			A

TMC PART NO.	ITEM 1	NO. OF CONDUCTORS	DIMENSIONS										
			L	A	B	C	D	FOR CONDUCTOR NO.1	FOR CONDUCTOR NO.2	FOR CONDUCTOR NO.3			
CA-808-1	WI-149-1	2	9-3/4	1/2	0	5/8	1/4	BLACK	1/4	1/8	N/A	N/A	N/A
CA-808-2	WI-149-1	2	8-9/16	1/2	0	5/16	1/4	BLACK	1/4	1/8	N/A	N/A	N/A



NOTE: N/A INDICATES "NOT APPLICABLE"

REQ. ITEM	PART NO.	KOHN	DESCRIPTION	SYMBOL
			THE TECHNICAL MATERIEL CORP. MAMARONECK, NEW YORK	
	STOCK SIZE		CABLE ASSY, SHIELDED	
	MATERIAL			
TYPE & TEMPER	HEAT TREAT. SPEC.	AK	8-10-63	8/14/63
		DR	8-26-63	W.A. PALMER
FINISH & SPEC. NO.				MECH. DES. APP.
				FINAL APPROVAL
				CA-808
				A

REQ. PER UNIT

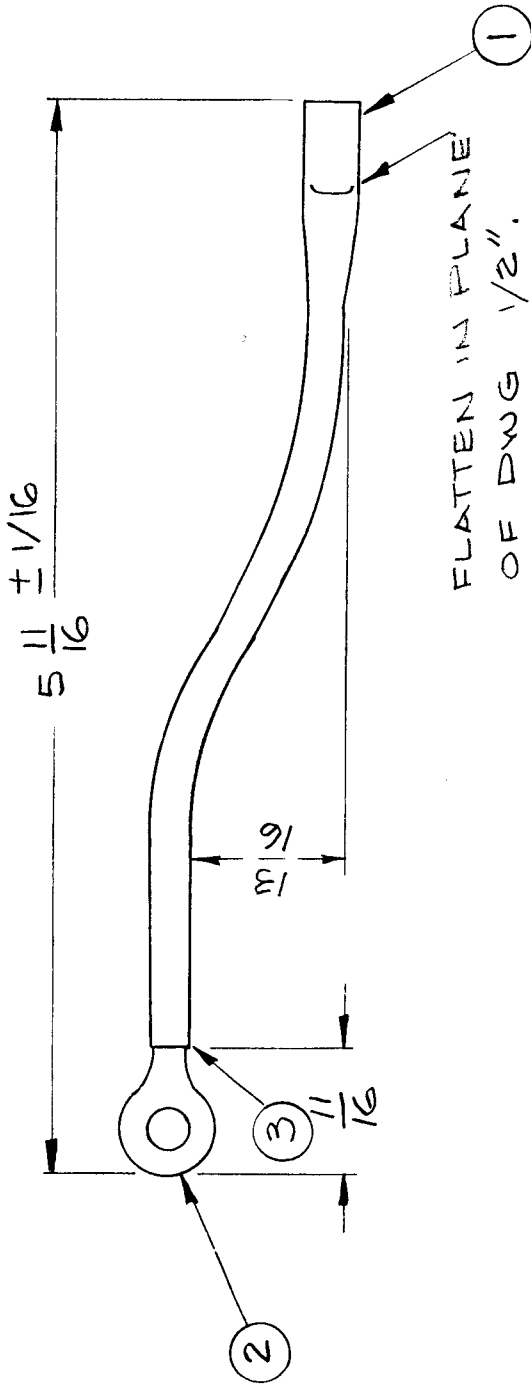
USED ON

MODEL
HLC-344

ASSY. NO.
ST 1078

DATE
10-17-63

CA-809 A



NOTE:
ITEM # 2 IS SOLDERED TO ITEM # 1.

REQ. ITEM	3	BS-101-1	SOLDER, SILVER	SYMBOL
	2	TE-156-32953	TERMINAL PLUG	
	1	TU-100-3 N	TUBING, COPPER	
REQ. ITEM		PART NO.	JOHNSON DESCRIPTION	SYMBOL
			THE TECHNICAL MATERIEL CORP. MAMARONECK. NEW YORK	
		STOCK SIZE	LEAD, ELECTRICAL	
		MATERIAL		
		COPPER		
TYPE & TEMPER	HEAT TREAT. SPEC.	DRAWN	CHECKED	FINAL APPROVAL
5245, S 423		ALAMIS	JUL 19 1963	
FINISH & SPEC. NO.		ELEC. DES. APP. MECH. DES. APP.		CA-809 A

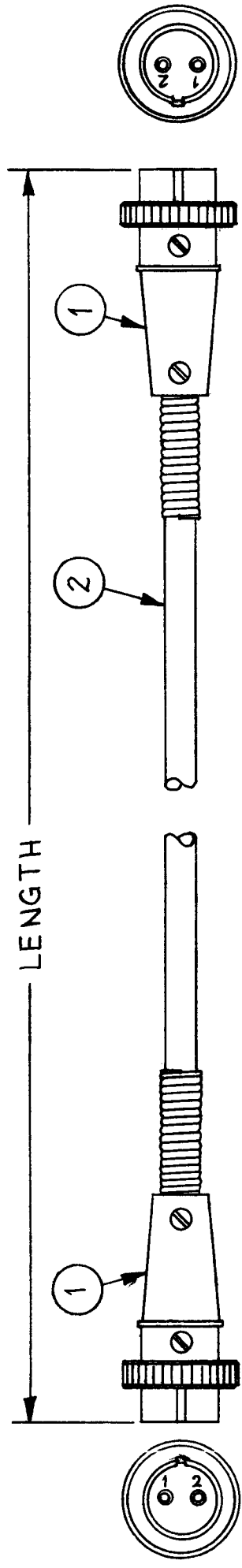
SYM	A	DESCRIPTION	DATE	CH. NO.	DRAFTS	CHECKER	ENG. APP.
		ITEM WAS: REQ. TU-100-3-C FINISH WRS CAD. PLATED. IT. 3 W. 85-101	8.13.64	12131	MB	MB	
		UNLESS OTHERWISE SPECIFIED DIMENSIONS ARE IN INCHES AND INCLUDE CHEMICALLY APPLIED OR PLATED FINISHES					SCALE 1:1
		TOLERANCES					CODE
		.X ± .05					FRACTIONS
		.XX ± .01					± 1/64
		.XXX ± .005					ANGLES
							± 0° 30'

STANDARD DRAWING

WIRING CONNECTION	
ITEM 2 COLOR	FROM TO
WHITE	PIN 1 PIN 1
BLACK	PIN 2 PIN 2

REQ. PER UNIT	MODEL	USED ON ASSY. NO.	DATE
---------------	-------	-------------------	------

CA-850



TMC PART NO. TO BE IN THE FOLLOWING FORM:

CA-850 - "XXX"

BASIC TMC PART NO. LENGTH

NOTE: FOR 119" LENGTHS OR LESS, EXPRESS IN INCHES.
FOR 10 FOOT LENGTHS OR OVER, EXPRESS IN FEET TO THE NEAREST FOOT OR HALF FOOT USE LETTER "F".

X	2	WI-121-1	WIRE, RUBBER, SHEATHED	SYMBOL
2	1	PL-239-2	CONNECTOR, PLUG, ELECTRICAL	
REQ. ITEM	PART NO.	MARTEN 60 DESCRIPTION		
STOCK SIZE		THE TECHNICAL MATERIEL CORP. MAMARONECK. NEW YORK		
MATERIAL		CABLE ASSY., SPECIAL PURPOSE ELECTRICAL INTERLOCK		
TYPE & TEMPER		M. TANTILLO 11-13-63		
HEAT TREAT. SPEC.		DRAWN 11/17/63		
FINISH & SPEC. NO.		CHECKED [Signature] FINAL APPROVAL		
ELEC. DES. APP.		MECH. DES. APP. CA-850		

NTS

SCALE

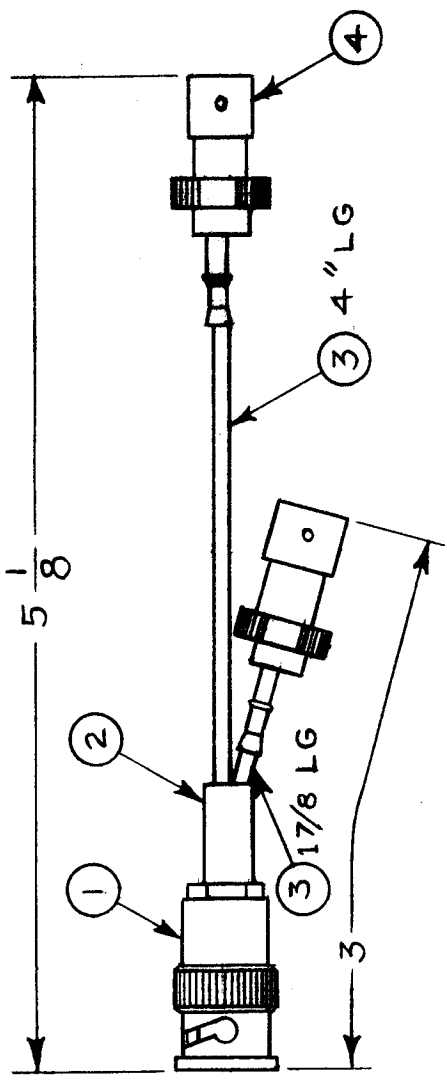
CODE A

UNLESS OTHERWISE SPECIFIED DIMENSIONS ARE IN INCHES AND INCLUDE CHEMICALLY APPLIED OR PLATED FINISHES

DECIMALS
X ± .05
XX ± .01
XXX ± .005

FRACTIONS
± 1/64
ANGLES
± 0° 30'

SUPERSEDED
DIRECTLY REPLACED BY -
 UG 274 */U



- NOTES:**
1. CRIMP ITEM 4 TO ITEM 3 WITH CRIMPING TOOL.
 2. STRIP BOTH ENDS OF ITEM 3 1/4" LONG.

REQ. ITEM	PART NO.	DESCRIPTION	SYMBOL
2	PL 243-1	CONNECTOR, BNC PLUG, CRIMP	
X	RG 174/U	CABLE, COAXIAL	
5/8	PX 830-10-4	INSULATION SLEEVING, ELECT	
1	UG 260/U	CONNECTOR, BNC PLUG, CRIMP	
		I. JOHNSON	
		THE TECHNICAL MATERIEL CORP. MAMARONECK. NEW YORK	
		CABLE ASSY.	
		R.F., BRANCHED	
		<i>H. Ketcher</i>	
		<i>Ca</i>	
		<i>RP</i>	
		CHECKED	FINAL APPROVAL
		DRAWN	
		ELEC. DES. APP.	MECH. DES. APP.
		FINISH & SPEC. NO.	CA 864
			A

SYM	DESCRIPTION	DATE	CH. NO.	DRAFTS	CHECKER	ENG. APP.
A	ADDED SUPERSEDED NOTE	8.16.66	16770	RME	<i>RME</i>	
Ø	ORIGINAL RELEASE FOR PRODUCTION	12.1.64	Ø	R.F.		
X	EXPERIMENT RELEASE	3/13/64		NP		

UNLESS OTHERWISE SPECIFIED DIMENSIONS ARE IN INCHES AND INCLUDE CHEMICALLY APPLIED OR PLATED FINISHES	SCALE	CODE
FRACTIONS ± 1/64 ANGLES ± 0° 30'	1:1	S401-71
DECIMALS .X ± .05 .XX ± .01 .XXX ± .005		

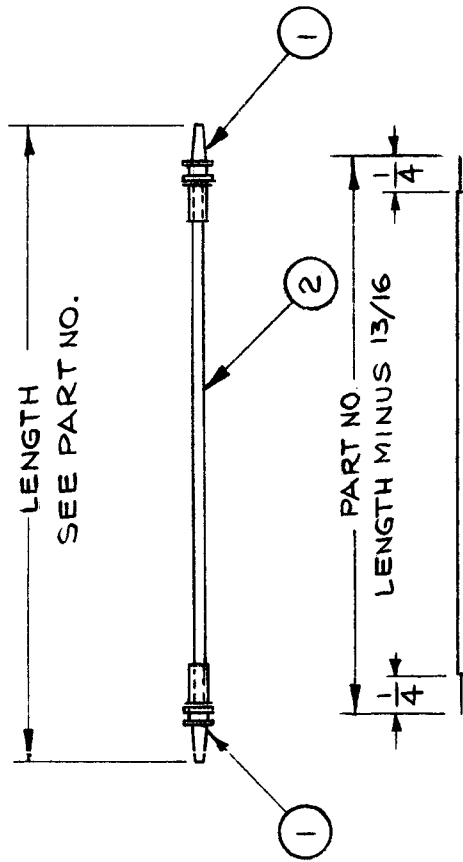
STANDARD DRAWING

REQ. PER UNIT
LPP-4

MODEL
ASS'Y. NO.
DATE
12-1-64

USED ON
CA875

Ø



NOTES:
1. CRIMP IT. ① TO IT. ② WITH TP-125-1 CRIMPING TOOL.

ITEM 2 COLOR CODE	ITEM 2 COLOR CODE
1	BRN
2	RED
3	ORN
4	VEL
5	GRN
6	BLU
7	VIO
8	GREY
9	WHT
0	BLK

EXAMPLE PART NO.

CA875 - 9 - 2.75
 T T T
 BASIC TMC NO. COLOR CODE LENGTH (TO 2 DEC. PLACES)

ORIGINAL RELEASE FOR PRODUCTION
 12.3.64
 12.1.64
 EXP. RELEASE

DATE
 12.3.64
 12.1.64
 CH. NO.
 DRAFTS
 CHECKER
 ENG. APP.

TYPE & TEMPER
 HEAT TREAT. SPEC.
 FINISH & SPEC. NO.

DRAWN
 CHECKED
 FINAL APPROVAL

12.1.64
 12-2-64

THE TECHNICAL MATERIEL CORP.
 MAMARONECK. NEW YORK
 LEAD, ELECTRICAL

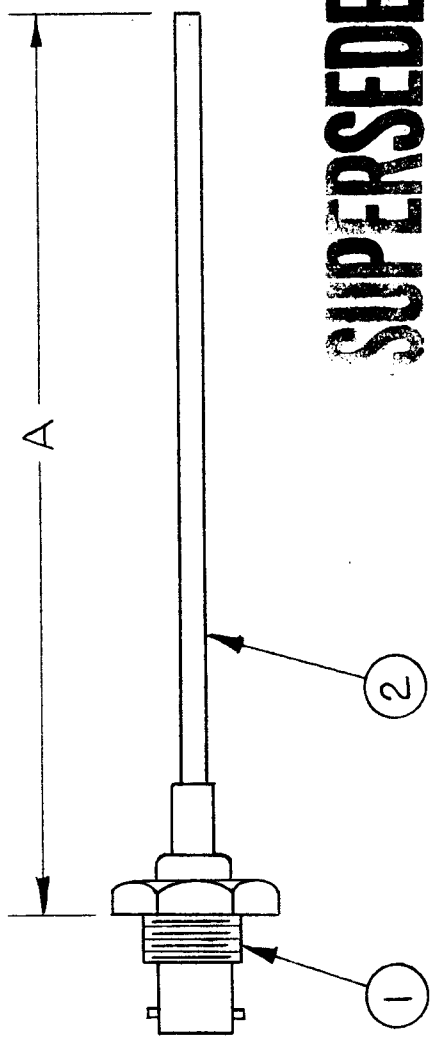
DECIMALS
 .X ± .05
 .XX ± .01
 .XXX ± .005

FRACTIONS
 ± 1/64
 ANGLES
 ± 0° 30'

SCALE
 CODE
 A

REQ. ITEM	DESCRIPTION	SYMBOL
X 2	LWC22(7)U--	WIRE, ELECTRICAL, INSULATED
2 1	PL-242-1	CONNECTOR PLUG, TAPER PIN
THE TECHNICAL MATERIEL CORP. MAMARONECK. NEW YORK		
LEAD, ELECTRICAL		
MATERIAL		
STOCK SIZE		
FINISH & SPEC. NO.		
TYPE & TEMPER		
HEAT TREAT. SPEC.		
DRAWN		
CHECKED		
FINAL APPROVAL		
ELEC. DES. APP.		
MECH. DES. APP.		
CA875		

PART No.	DIM. "A"	FUNCTION	MODEL	SUPERSEDED BY
CA-881-1	7 1/2"	MIXER INPUT	MSA-1	CA480-114-7.50
CA-881-2	11"	NOTCH FILTER IN & OUT	MSA-1	CA480-114-11



SUPERSEDED

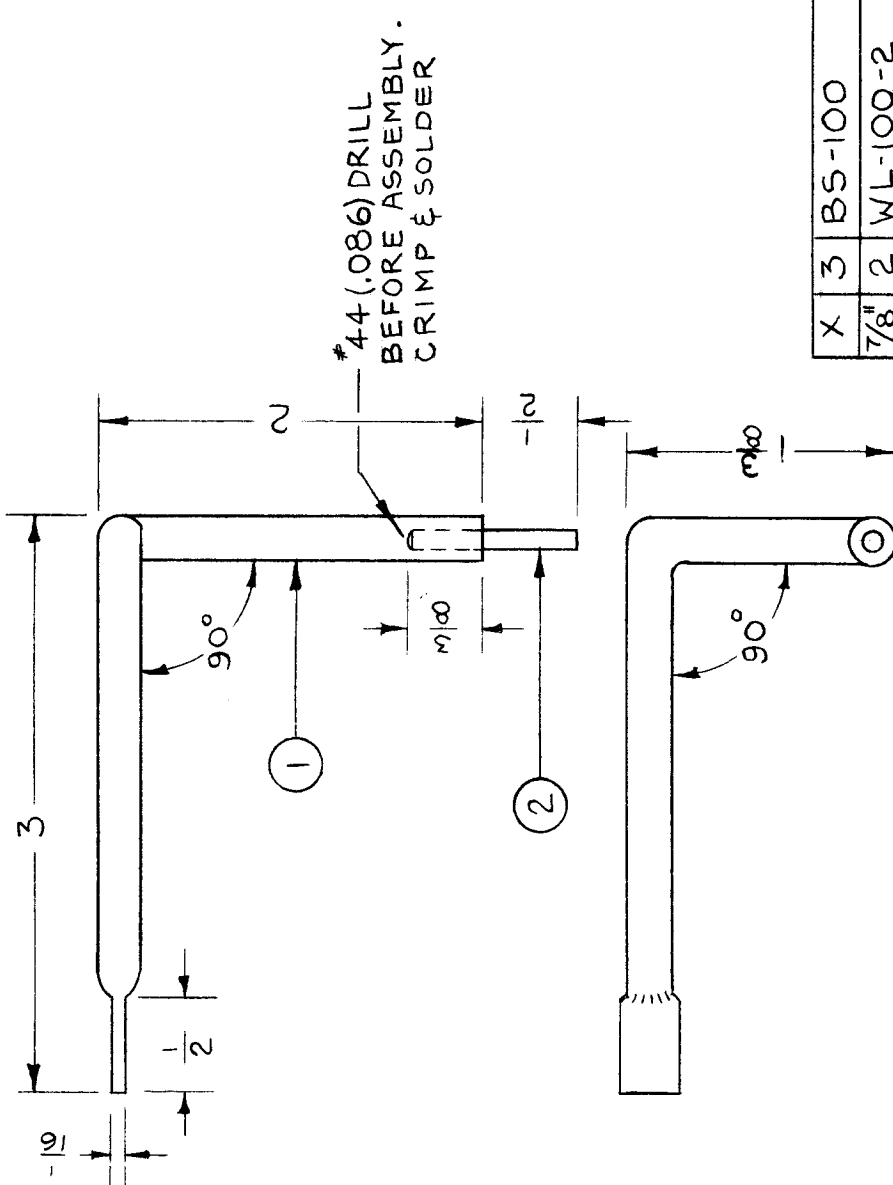
DIRECTLY REPLACED BY

EMN # 11906 - 7-21-64 - G. Jensen

CA480 PER CHART

REQ. ITEM	PART NO.	DESCRIPTION	SYMBOL
X 2	RG-174/U	CABLE, COAXIAL	
1 1	JJ-172	CONNECTOR, BNC SERIES	
		AALTONEN	
		THE TECHNICAL MATERIEL CORP. MAMARONECK. NEW YORK	
		CABLE ASSY., IF INPUT	
		3.17.64	
		ANTB	
		DRAWN	
		CHECKED	
		FINAL APPROVAL	
		MECH. DES. APP.	
		ELEC. DES. APP.	
		FINISH & SPEC. NO.	

SYMBOL	DESCRIPTION	DATE	CH. NO.	DRAFTS	CHECKER	ENG. APP.
A	SUPERSEDED ADDED TO CHART # PICTORIAL	7-21-64	11906			
O	ORIGINAL RELEASE FOR PRODUCTION	4/13/64	O	AM.	@	
X	EXPERIMENTAL RELEASE	4-13-64	X	AM.	@	
	UNLESS OTHERWISE SPECIFIED DIMENSIONS ARE IN INCHES AND INCLUDE UNLESS OTHERWISE SPECIFIED OR PLATED FINISHES FRACTIONS ± 1/64 IN. ± .01 IN.					
	SCALE					
	CODE					
	A					

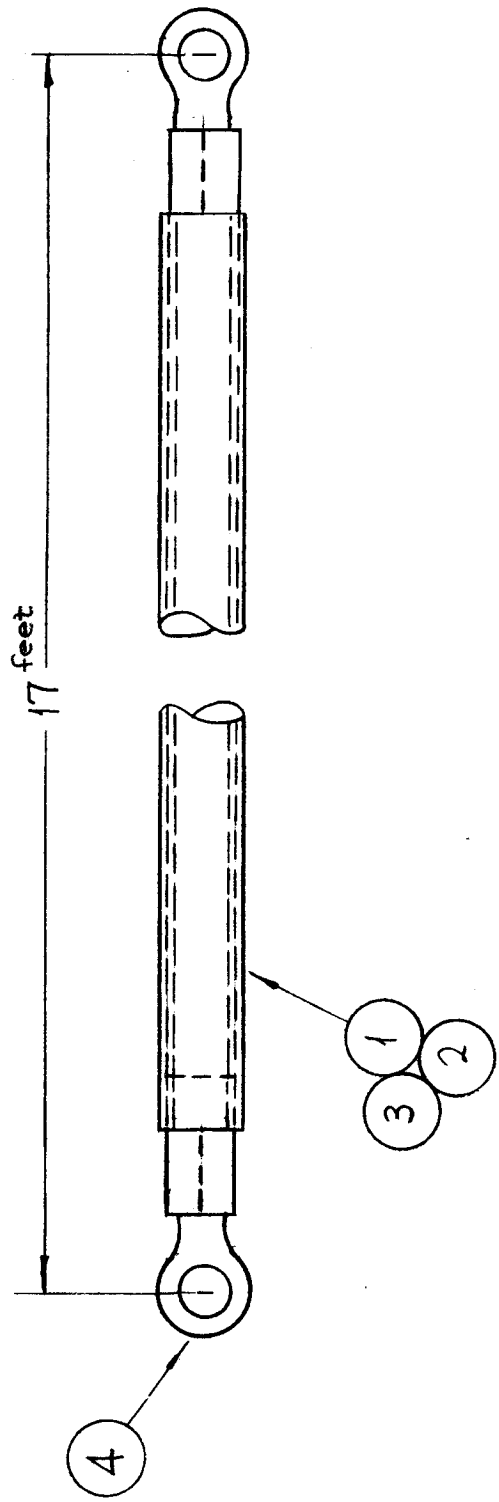


REQ. ITEM	PART NO.	DESCRIPTION	SYMBOL
X 3	BS-100	SOLDER, TIN ALLOY	
7/8	WL-100-2	WIRE, BUSS, #12	
6/4	TU-100-2 N	TUBING, COPPER	
		R. HAY	
		THE TECHNICAL MATERIEL CORP. MAMARONECK. NEW YORK	
		LEAD, ELECTRICAL	
		4.7.64 JTB	
		DRAWN	
		CHECKED	
		4/16/64	
		FINAL APPROVAL	
		CA-886	
		ELEC. DES. APP. MECH. DES. APP.	

SYM	DESCRIPTION	DATE	CH. NO.	DRAFTS	CHECKER	ENG. APP.
0	ORIGINAL RELEASE FOR PRODUCTION	4/11/64				
X	EXPERIMENTAL RELEASE	4/16/64				
	UNLESS OTHERWISE SPECIFIED DIMENSIONS ARE IN INCHES AND INCLUDE CHEMICALLY APPLIED OR PLATED FINISHES					
	TOLERANCES					
	DECIMALS					
	.X ± .05					
	.XX ± .01					
	.XXX ± .005					
	FRACTIONS					
	± 1/64					
	ANGLES					
	± 0° 30'					
	SCALE					
	CODE					
	A					

REQ. PER UNIT	MODEL	USED ON
GPT-200K	AS-123	ASSY. NO.
	AS-123	DATE
		4-20-64

CA-888 0



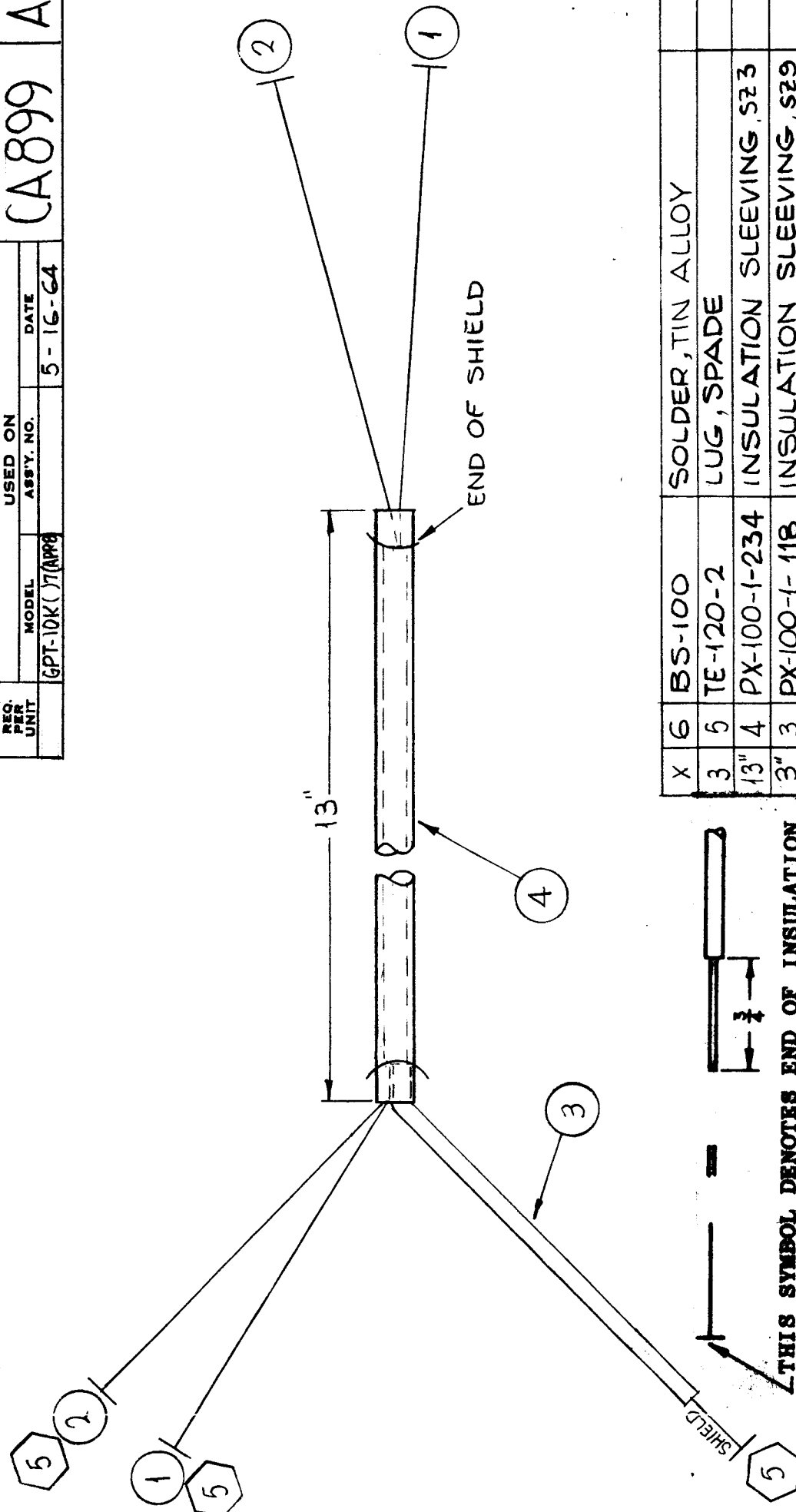
TMC No.	ITEM	COLOR	REQ.
CA-888-1	WI-147-1	WHITE	1
CA-888-2	WI-147-2	PINK	1

REQ. ITEM	PART NO.	DESCRIPTION	SYMBOL
6	BS-100	SOLDER, SOFT	
5	GL-114	COMPOUND, SILICONE LUBRICANT	
2	TE-197-6-25	TERMINAL LUG INSULATED	
203 3/4	PX-370-37-7	INSULATION, SLEEVING	
203 1/2	PX-370-1-7	INSULATION, SLEEVING	
204 1	SEE CHART	WIRE, SPECIAL PURPOSE (H.V.)	
		F. BUDETTI	
STOCK SIZE		THE TECHNICAL MATERIEL CORP. MAMARONECK, NEW YORK	
MATERIAL		LEAD ELECTRICAL	
TYPE & TEMPER		DRAWN	
HEAT TREAT. SPEC.		CHECKED	
FINISH & SPEC. NO.		ELEC. DES. APP. MECH. DES. APP.	

SYM	DESCRIPTION	DATE	CH. NO.	DRAFTS	CHECKER	ENG. APP.
0	ORIGINAL RELEASE	5.16.64		ASB		
UNLESS OTHERWISE SPECIFIED DIMENSIONS ARE IN INCHES AND INCLUDE CHEMICALLY APPLIED OR PLATED FINISHES						
TOLERANCES		FRACTIONS		CODE		
.X ± .05		± 1/64		ANGLES		
.XX ± .01		± 0° 30'		±		
.XXX ± .005						

CA899 A

REQ. PER UNIT	MODEL	USED ON
	GPT-10K (17 APP)	ASSY. NO.
		DATE
		5-16-64



THIS SYMBOL DENOTES END OF INSULATION AND NAIL DRIVING POINT. WIRE MUST BE STRIPPED 3/4" BEYOND THIS POINT AND TINNED 1/2" UNLESS OTHERWISE SPECIFIED.

SYM	DESCRIPTION	DATE	CH. NO.	DRAFTS	CHECKER	ENG. APP.
A	IT. 4 WAS PX-100-1-250 IT. 3 WAS PX-100-1-125	10.8.64	12.568	AS	AS	AS
O	ORIG. PROD. RELEASE	6-16-64		A.M.	@	@

UNLESS OTHERWISE SPECIFIED DIMENSIONS ARE IN INCHES AND INCLUDE CHEMICALLY APPLIED OR PLATED FINISHES		SCALE	
DECIMALS	FRACTIONS	TOLERANCES	CODE
.X ± .05	± 1/64	± .005	A
.XX ± .01	± 0° 30'		
.XXX ± .005			

REQ. ITEM	PART NO.	DESCRIPTION	SYMBOL
X 6	BS-100	SOLDER, TIN ALLOY	
3 5	TE-120-2	LUG, SPADE	
13" 4	PX-100-1-234	INSULATION SLEEVING, S23	
3" 3	PX-100-1-118	INSULATION SLEEVING, S29	
19" 2	MWC 22(7)SJ4	CABLE, INSULATED	YEL
19" 1	MWC 22(7)SJ2	CABLE, INSULATED	RED
		BUDETTI	
		THE TECHNICAL MATERIEL CORP. MAMARONECK. NEW YORK	
		CABLE, JUMPER	
		MATERIAL	
		STOCK SIZE	
		FINISH & SPEC. NO.	
		TYPE & TEMPER	
		HEAT TREAT. SPEC.	
		CHECKED	
		DRAWN	
		ELC. DES. APP.	
		MECH. DES. APP.	
		FINAL APPROVAL	