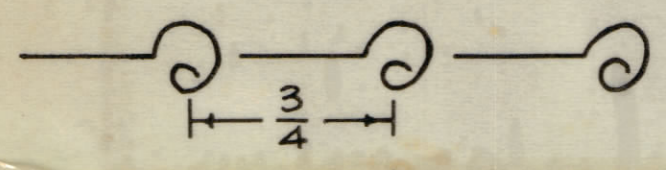


UNLESS OTHERWISE SPECIFIED WIRES SHOULD BE PLACED IN CABLE IN NUMERICAL SEQ. AS THEY APPEAR IN ITEM COLUMN BY CATEGORY.

1. ALL R.F. CABLES
2. ALL SHIELDED CABLES
3. ALL OTHERS  
SPACE LACING APPROXIMATELY 3/4" APART.

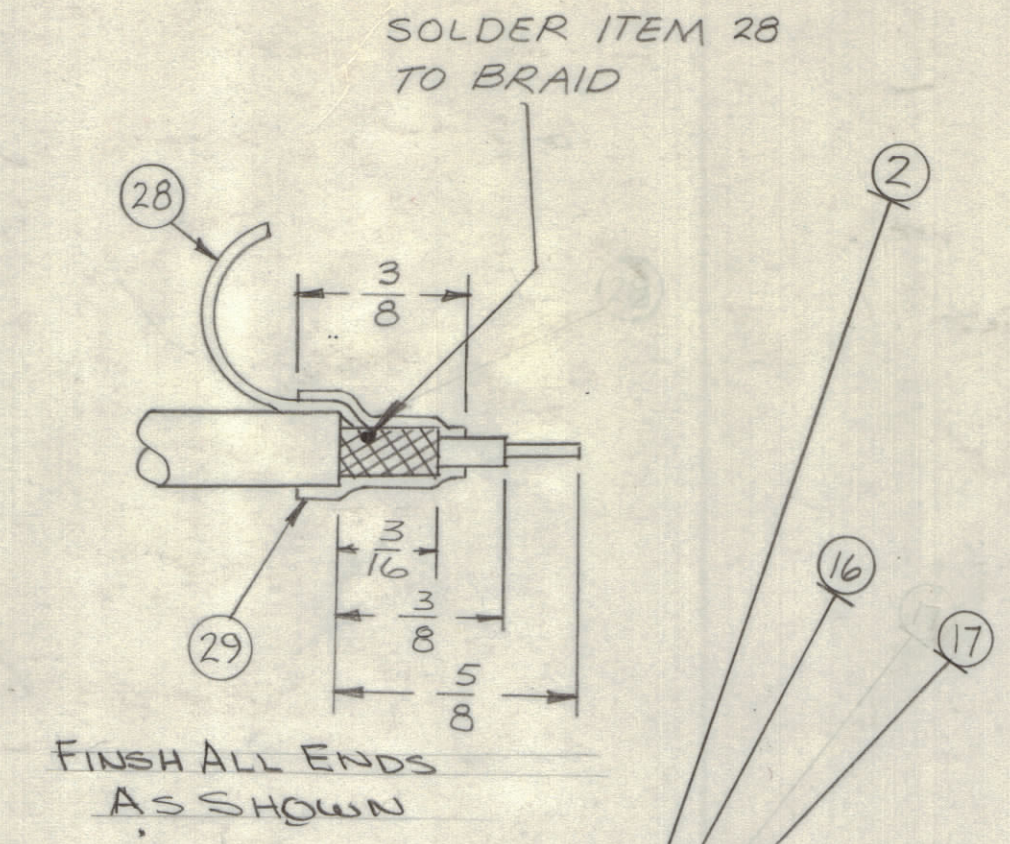
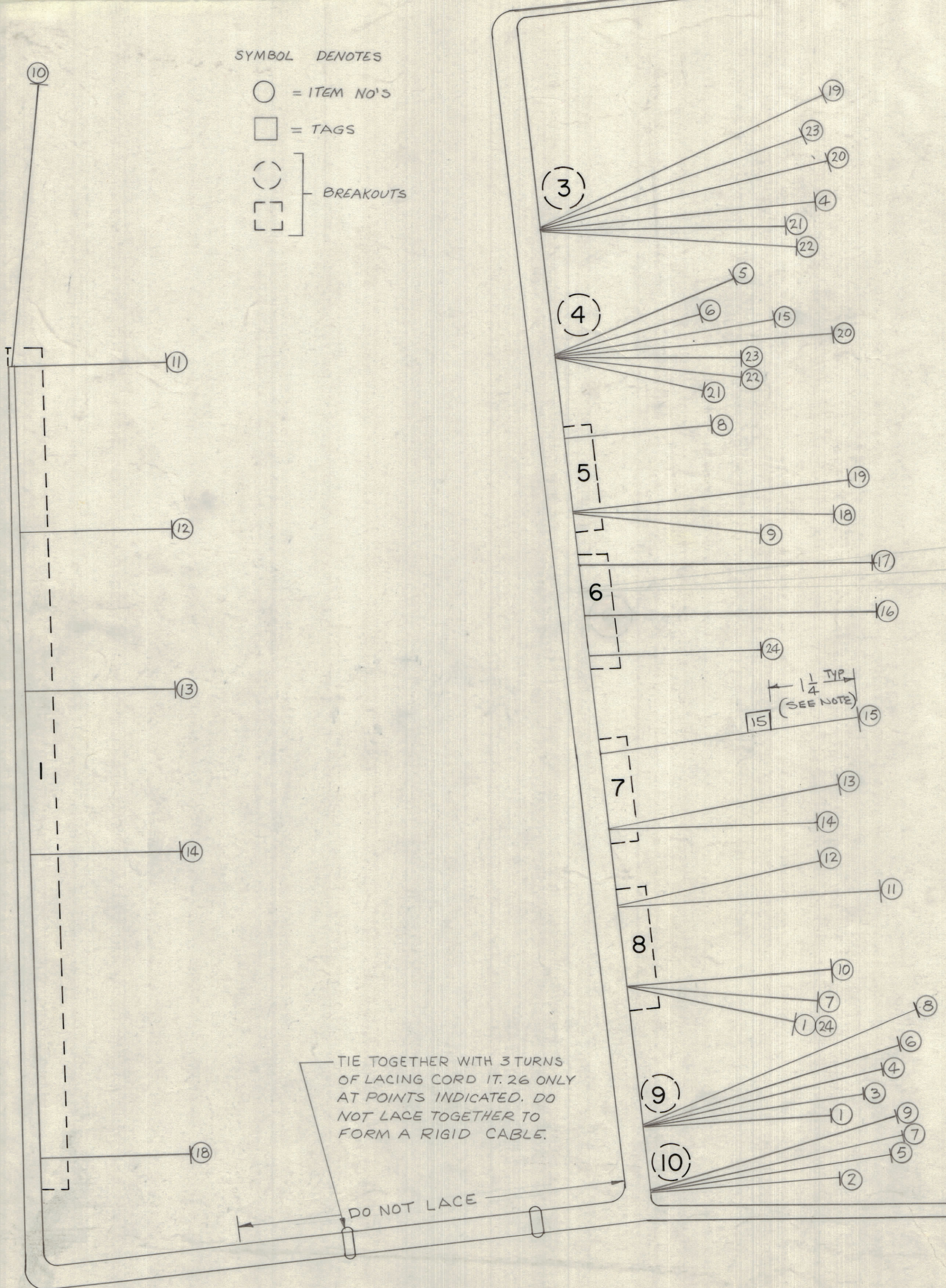


THIS SYMBOL DENOTES END OF INSULATION AND NAIL DRIVING POINT. WIRE MUST BE STRIPPED 3/4" BEYOND THIS POINT AND TINNED 1/2" UNLESS OTHERWISE SPECIFIED.

SYMBOL DENOTES

- = ITEM NO'S
- = TAGS
- ⊖ (circle with dash) = BREAKOUTS
- ⊞ (square with dash) = BREAKOUTS

REVISIONS						
ZONE	LTR	DESCRIPTION	DATE	E.M.N.NO	DRAFT	CHKD APPD
	X	EXP. RELEASE	9.27.68	11	H.S.	
		ORIG. RELEASE FOR PROD.	10.6.68		R.G.	



**LABEL NOTE**  
ATTACH LABELS (LA101-) TO BOTH ENDS OF EACH WIRE (1/4 FROM END, TYP).

TIE TOGETHER WITH 3 TURNS OF LACING CORD IT. 26 ONLY AT POINTS INDICATED. DO NOT LACE TOGETHER TO FORM A RIGID CABLE.

DO NOT LACE

1	VOXC)-7	
QTY / UNIT	MODEL USED ON	ASS'Y NO.
APPLICATION		
CODE		

**NOTICE TO PERSONS RECEIVING THIS DRAWING**  
THE TECHNICAL MATERIEL CORPORATION claims proprietary right in the material disclosed herein. This drawing is issued in confidence for engineering information only and may not be reproduced or used to manufacture anything shown hereon without permission from THE TECHNICAL MATERIEL CORPORATION to the user. This drawing is loaned for mutual assistance and is subject to recall at any time.

UNLESS OTHERWISE SPECIFIED DIMENSIONS ARE IN INCHES AND INCLUDE CHEMICALLY APPLIED OR PLATED FINISHES		FINAL APPROVAL <i>[Signature]</i>	DATE
TOLERANCES ON		ELECT. DES. <i>[Signature]</i>	DATE 10/4/68
DECIMALS .X ± .05 .XX ± .01 .XXX ± .005	FRACTIONS ± 1/64 ANGLES ± 0° -30'	CHECKED <i>[Signature]</i>	DATE 10/3/68
MATERIAL		DRAWN <i>[Signature]</i>	DATE 9.26.68
FINISH			

QTY. REQ.	ITEM	PART NO.	DESCRIPTION	SYMBOL
LIST OF MATERIAL				
THE TECHNICAL MATERIEL CORP. MAMARONECK, NEW YORK				
WIRING HARNESS BRANCHED				
SIZE	CODE IDENT. NO.	DWG NO.	ISSUE	
D	82679	CA 1438	Ø	
SCALE	SHEET			OF