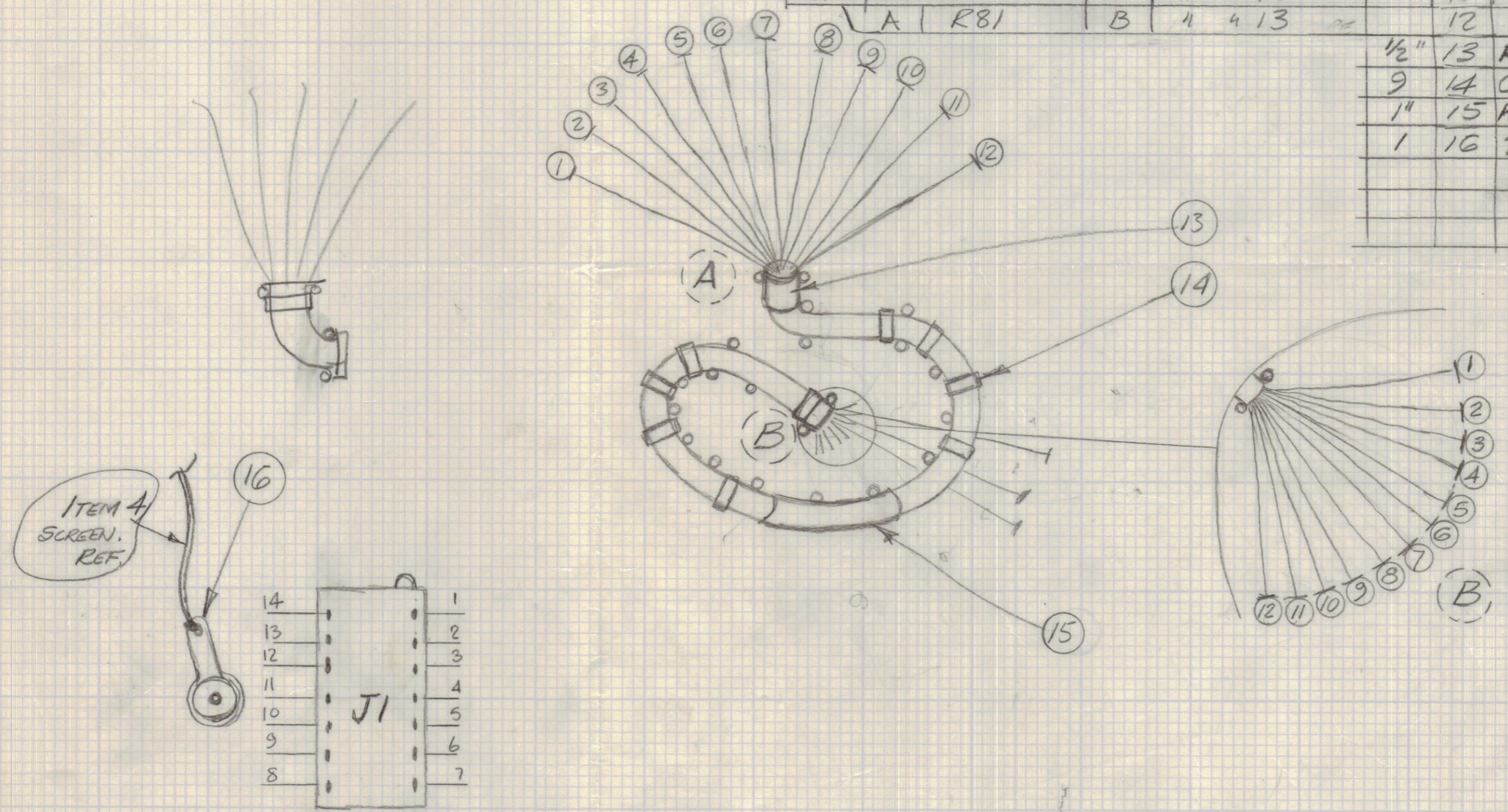


BREAKOUT	FROM COMPONENT	BREAKOUT	TO COMPONENT	REQ	ITEM	PART NO	DESCRIPTION
A	R105, R109	B	J1 PIN 1		1	WI140E26E2	WIRE ELEC INS.
A	C104	B	" " 2		2	WI140E26E7	" " "
A	CR101	B	" " 3		3	WI140E26E0	" " "
A	C107	B	" " 4		4	RG174U	CABLE, SCREEN, SINGLE.
A	GRD AT C105 & C106	B	ITEM 16		4		SCREEN OF CABLE ITEM 4.
A	R11	B	" " 6		5	WI140E26E9	WIRE ELEC INS.
A	R21	B	" " 7		6	"	" " "
A	R31	B	" " 8		7	"	" " "
A	R41	B	" " 9		8	"	" " "
A	R51	B	" " 10		9	"	" " "
A	R61	B	" " 11		10	"	" " "
A	R71	B	" " 12		11	"	" " "
A	R81	B	" " 13		12	"	" " "
					1/2"	13 PX830-12-1	INS. SLEEVING ELEC SHANK.
					9	14 CU142-8	STRAP CABLE.
					1"	15 PX100-9-166	MARKED CA10554 C/W LATEST REVISION LETTER.
					1	16 TE104-4	TERMINAL LOCKING



PIN ORIENTATION OF J1 VIEWED FROM WIRING POSN.

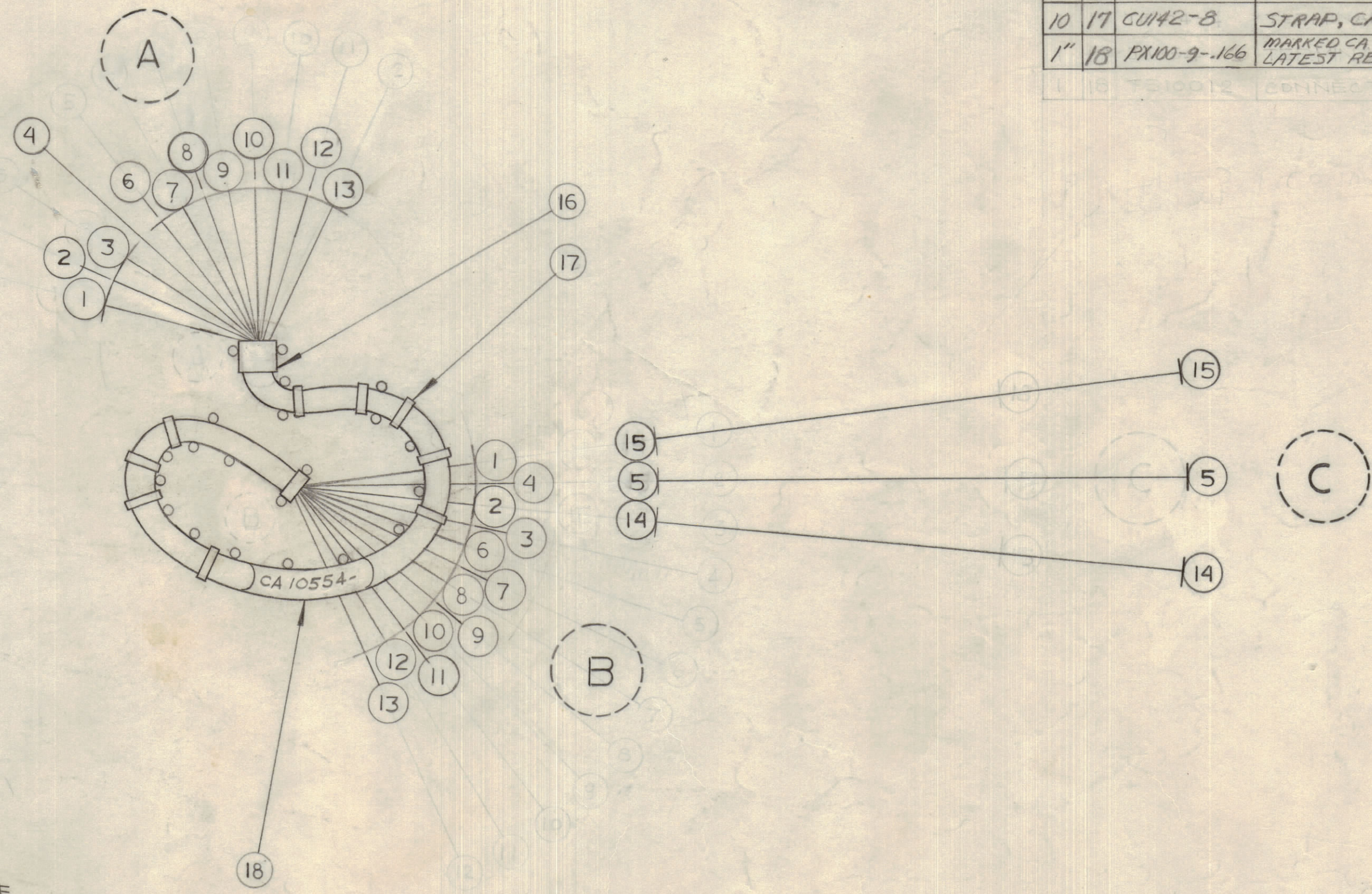
WIRING HARNESS

CA10554

replaced by Rev. A.

IF IT IS FOUND DESIRABLE TO CHANGE ANY TOLERANCE OR OTHER DETAIL SPECIFIED ON THIS DRAWING NOTIFY THE PURCHASER PROMPTLY.		DIMENSIONS IN INCHES UNLESS OTHERWISE SPECIFIED					
MAXIMUM ALLOWABLE TOLERANCES HAVE BEEN DETERMINED AND DEVIATIONS WILL BE CAUSE FOR REJECTION. REMOVE ALL BURRS AND SHARP EDGES.							
ISSUE	ITEM	CHANGED FROM	DATE	CN. NO.	DRAFTS	CHECKER	ENG. APP.
φ		REL. TO PROD.	8-11/1969		Y.M.		
A		REVISED PERCEMN	21 NOV 69	640	PW		

BREAKOUT	FROM COMPONENT	BREAK OUT	TO COMPONENT	REQ.	ITEM	PART NO.	DESCRIPTION	SYMBOL
A	R105, R109	B	J1 PIN 1		1	WI140E26E2	WIRE ELEC. INS.	
A	R105 & R106	B	J1 PIN 5		2	WI140E26E2		
A	R101	B	" " 3		3	WI140E26E9	" " "	
A	R12 & C13 (GND)	B	J1 PIN 4		4	WI140E26E0	" " " SINGLE	
B	J1 PIN 4	C	J3 PIN 1		5	WI140E26E0	" " " " SHIELD	
A	R11	B	J1 PIN 6		6	WI140E26E9	WIRE ELEC. INS.	
A	R21	B	" " 7		7	"	" " "	
A	R31	B	" " 8		8	"	" " "	
A	R41	B	" " 9		9	"	" " "	
A	R51	B	" " 10		10	"	" " "	
A	R61	B	" " 11		11	"	" " "	
A	R71	B	" " 12		12	"	" " "	
A	R81	B	" " 13		13	"	" " "	
B	J1 PIN 5	C	J3 PIN 6		14	WI140E26E2	" " " " SHIELD	
B	J1 PIN 2	C	J3 PIN 2		15	WI140E26E7	" " " "	
					1/2"	PXB30-12-1	INSUL, SLEEVING, ELECT, SHRINK	
					10	CU142-8	STRAP, CABLE	
					1"	PX100-9-.166	MARKED CA10554 C/W LATEST REVISION LTR.	T2
						TS10012	CONNECTOR REPT. J1	



CA10554 A

PIN ORIENTATION OF J1 VIEWED FROM WIRING POSN.

TOLERANCES			SCALE:
ALL	DEC. DIM. ± .05	.XX*.01	DRILL, PUNCH, COMMERCIAL STOCK
OTHERS	FRAC. DIM. ± 1/64	.XXX*.008	SIZES AND MANUFACTURERS
	ANGULAR DIM. ± 0°30'		TOLERANCES ARE NOT INCLUDED.

A010003	086/69	8-11-1969
MODEL	PROJECT NO.	DATE

STOCK SIZE		TMC (Canada) LIMITED	
		OTTAWA ONTARIO	
MATERIAL		WIRING HARNESS	
WEIGHT PER PC.			
TYPE & TEMPER		Y. MORI	SIMPSON
		DRAWN	ELEC. DES. APP. MECH. DES. APP.
HEAT TREAT. SPEC.		CHECKED	FINAL APPROVAL
		CA10554 A	
FINISH & SPEC. NO.			