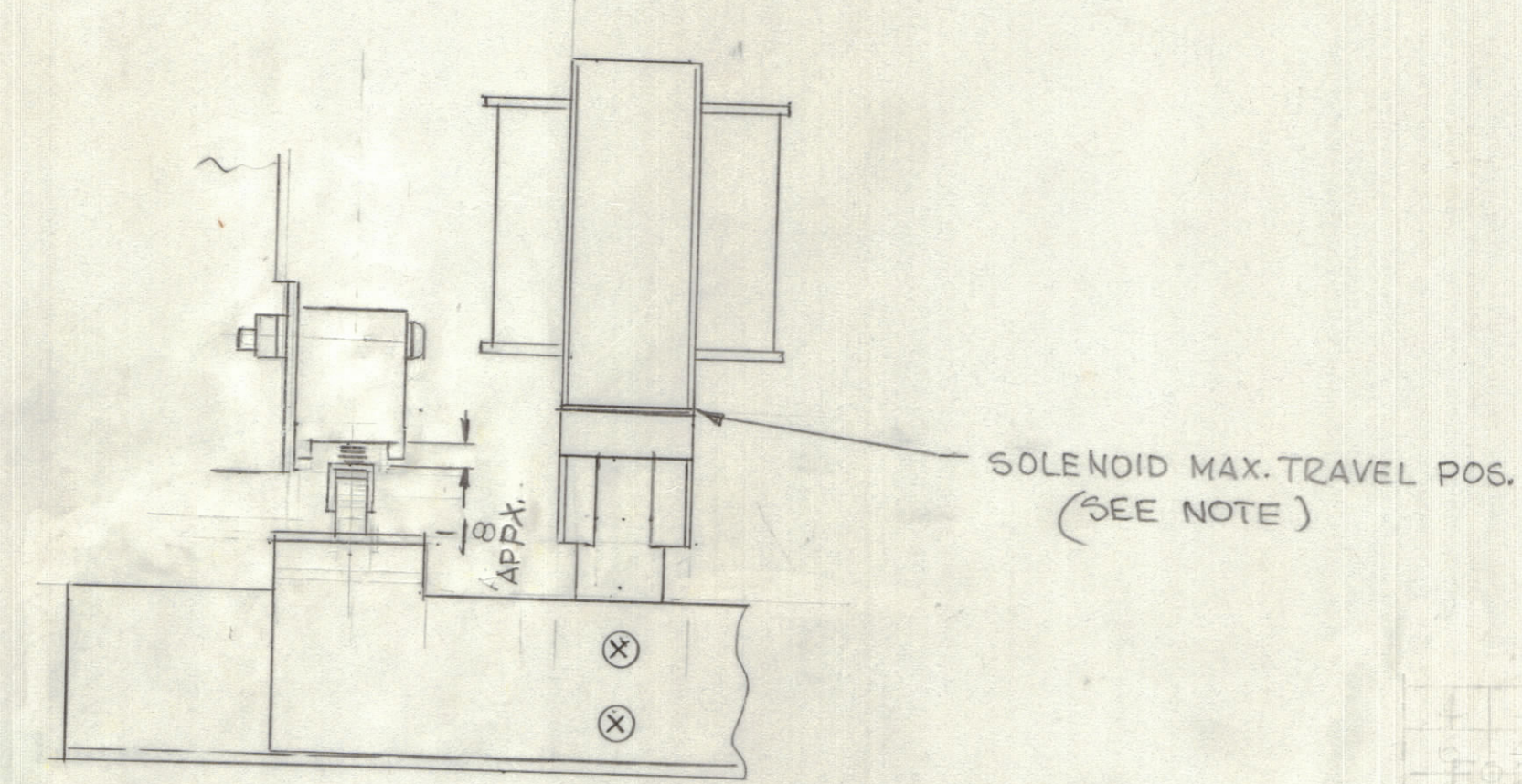
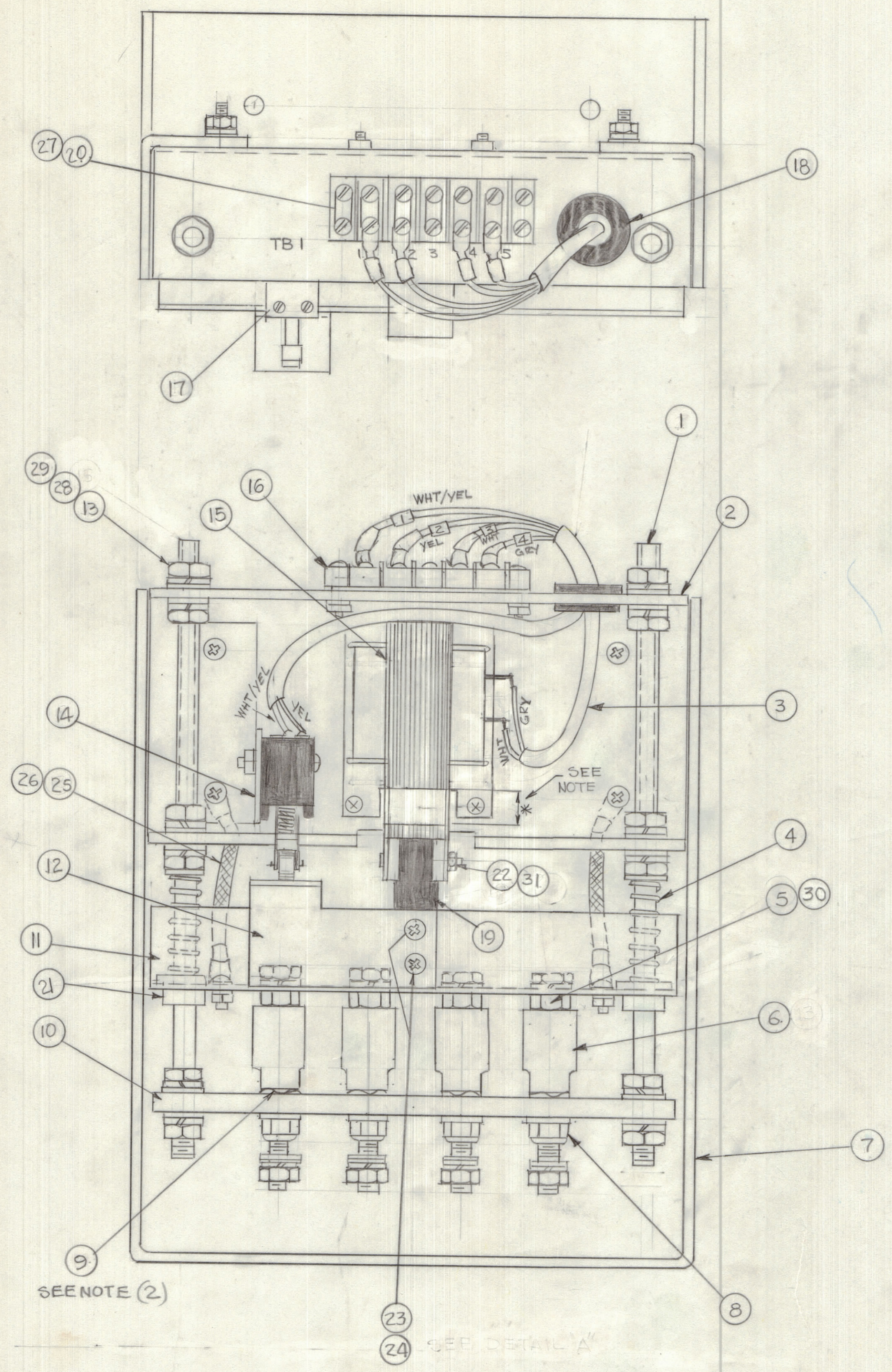


REVISIONS					
E.M.N.O	DRAFT	CHKD	ZONE	LTR	
DESCRIPTION				DATE	APPROVED
ORIGINAL RELEASE FOR PRODUCTION				7-7-78	*



NOTES:

1 - ADJUST MICROSWITCH (ITEM 17) SOLENOID MAXIMUM TRAVEL IS NOT RESTRICTED BY MICROSWITCH

2 - NUT, LOCK (ITEM 8) SHOULD BE TIGHTENED AS MUCH AS POSSIBLE TO RETAIN PROPER FLOATING ALIGNMENT.

QTY.	REQ.	ITEM	PART NO.	DESCRIPTION	SYMBOL
1	31	SCBS0440BN6	SCREW, MACHINE		
4	30	SCH2520BN10	BOLT, HEX.		
20	29	FW25MRN	WASHER FLAT		
20	28	LW525MRN	LOCWASHER, SPLIT		
1	27	PX0336-5	INS. TERM		
4	26	TE141-3	TERMINAL LUG		
X	25	WL103-4	BRAID WIRE FLAT		
2	24	SM127-0632L	NUT LOCK		
2	23	SCBS0632BN26	SCREW MACHINE		
1	22	SM127-440L	NUT LOCK		
2	21	PX1090	GLAND, SPRG		
2	20	MS154	PLATE, MTG, TERM, BD		
1	19	PX1089	INSUL SOL.		
1	18	EY102-17	GROMMET		
1	17	SW260	SW, SENS-SPDT		
1	16	TM102-5	TERM., BD-BARD		
1	15	SE100-6	SOLENOID, ELEC.		
1	14	MS6729	BRACKET		
16	13	NTH2520BNT4	NUT, HEX.		
1	12	MS6728	BRACKET		
1	11	MS5639	BAR, SHORTING		
1	10	PX1088	BAR, CONTACT		
4	9	LW119	WASHER		
4	8	SM127-25-20	NUT, LOCK		
1	7	MS5572	CHASSIS, REL.		
4	6	A5760	NUT, SHORTING ASSY		
4	5	NTC2520BN6	NUT, CAP		
2	4	SP128-4	SPG, COMP		
1	3	CA1504	CBL, SHORT ASSY		
1	2	MS5571	BRKT, MTG, REL		
2	1	SM156-11BN	ROD, THD END		

QTY.	REQ.	ITEM	PART NO.	DESCRIPTION	SYMBOL
1	31	SCBS0440BN6	SCREW, MACHINE		
4	30	SCH2520BN10	BOLT, HEX.		
20	29	FW25MRN	WASHER FLAT		
20	28	LW525MRN	LOCWASHER, SPLIT		
1	27	PX0336-5	INS. TERM		
4	26	TE141-3	TERMINAL LUG		
X	25	WL103-4	BRAID WIRE FLAT		
2	24	SM127-0632L	NUT LOCK		
2	23	SCBS0632BN26	SCREW MACHINE		
1	22	SM127-440L	NUT LOCK		
2	21	PX1090	GLAND, SPRG		
2	20	MS154	PLATE, MTG, TERM, BD		
1	19	PX1089	INSUL SOL.		
1	18	EY102-17	GROMMET		
1	17	SW260	SW, SENS-SPDT		
1	16	TM102-5	TERM., BD-BARD		
1	15	SE100-6	SOLENOID, ELEC.		
1	14	MS6729	BRACKET		
16	13	NTH2520BNT4	NUT, HEX.		
1	12	MS6728	BRACKET		
1	11	MS5639	BAR, SHORTING		
1	10	PX1088	BAR, CONTACT		
4	9	LW119	WASHER		
4	8	SM127-25-20	NUT, LOCK		
1	7	MS5572	CHASSIS, REL.		
4	6	A5760	NUT, SHORTING ASSY		
4	5	NTC2520BN6	NUT, CAP		
2	4	SP128-4	SPG, COMP		
1	3	CA1504	CBL, SHORT ASSY		
1	2	MS5571	BRKT, MTG, REL		
2	1	SM156-11BN	ROD, THD END		

QTY.	REQ.	ITEM	PART NO.	DESCRIPTION	SYMBOL
1	31	SCBS0440BN6	SCREW, MACHINE		
4	30	SCH2520BN10	BOLT, HEX.		
20	29	FW25MRN	WASHER FLAT		
20	28	LW525MRN	LOCWASHER, SPLIT		
1	27	PX0336-5	INS. TERM		
4	26	TE141-3	TERMINAL LUG		
X	25	WL103-4	BRAID WIRE FLAT		
2	24	SM127-0632L	NUT LOCK		
2	23	SCBS0632BN26	SCREW MACHINE		
1	22	SM127-440L	NUT LOCK		
2	21	PX1090	GLAND, SPRG		
2	20	MS154	PLATE, MTG, TERM, BD		
1	19	PX1089	INSUL SOL.		
1	18	EY102-17	GROMMET		
1	17	SW260	SW, SENS-SPDT		
1	16	TM102-5	TERM., BD-BARD		
1	15	SE100-6	SOLENOID, ELEC.		
1	14	MS6729	BRACKET		
16	13	NTH2520BNT4	NUT, HEX.		
1	12	MS6728	BRACKET		
1	11	MS5639	BAR, SHORTING		
1	10	PX1088	BAR, CONTACT		
4	9	LW119	WASHER		
4	8	SM127-25-20	NUT, LOCK		
1	7	MS5572	CHASSIS, REL.		
4	6	A5760	NUT, SHORTING ASSY		
4	5	NTC2520BN6	NUT, CAP		
2	4	SP128-4	SPG, COMP		
1	3	CA1504	CBL, SHORT ASSY		
1	2	MS5571	BRKT, MTG, REL		
2	1	SM156-11BN	ROD, THD END		

QTY / UNIT	MODEL USED ON	ASS'Y NO.
	PALA-10K	
APPLICATION		
CODE		
MATERIAL		
FINISH		

DECIMALS	FRACTIONS
X ± .05	= 1/64
.XX ± .01	ANGLES
.XXX ± .005	= 0° -30'

FINAL APPROVAL	DATE
* GDB	7/3/78
MECH. DES.	DATE
ELECT. DES.	DATE
CHECKED	DATE
DRAWN	DATE
GDL	6-22-78

NOTICE TO PERSONS RECEIVING THIS DRAWING

THE TECHNICAL MATERIEL CORPORATION claims proprietary right in the material disclosed hereon. This drawing is issued in confidence for engineering information only and may not be reproduced or used to manufacture anything shown herein without permission from THE TECHNICAL MATERIEL CORPORATION to the user. This drawing is loaned for mutual assistance and is subject to recall at any time.

SIZE	CODE	IDENT NO.	DWG NO.	ISSUE
D	82679	AX5096		φ
SCALE 1:1				SHEET OF