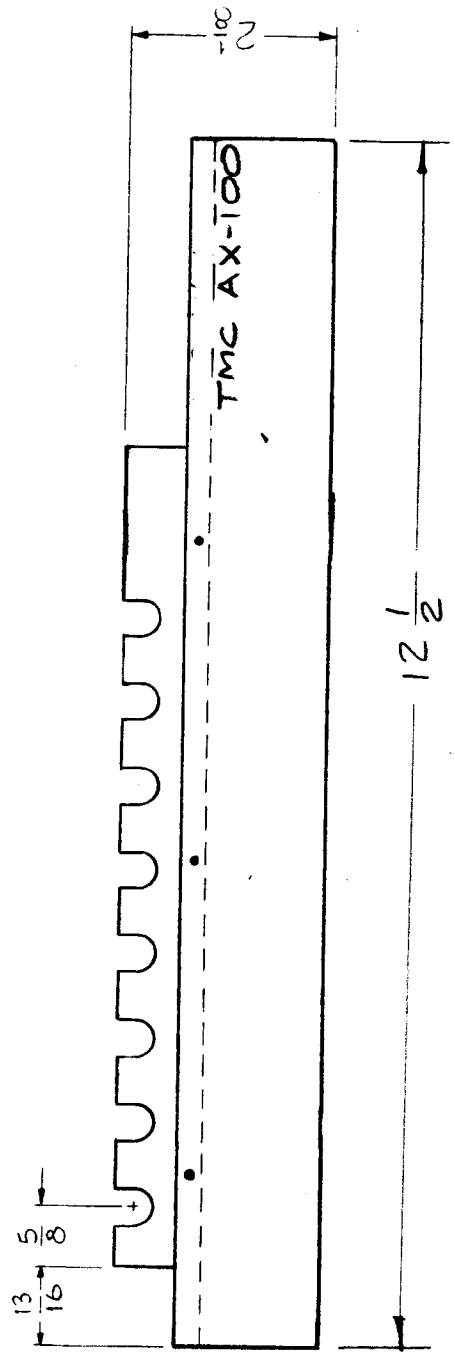
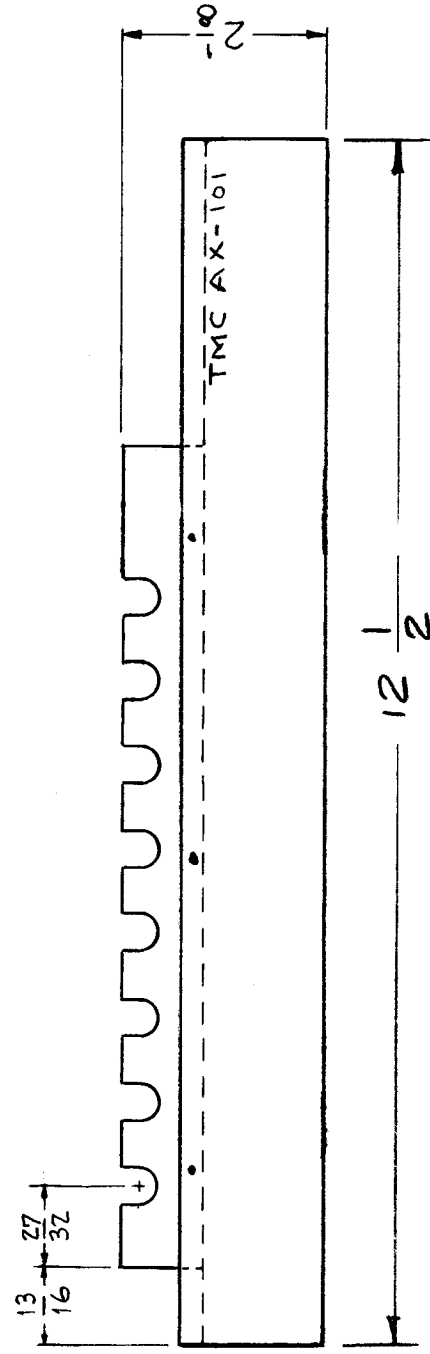


REQ. PER UNIT	1	MODEL	GPT-10K	USED ON	AX-100
ASSY. NO.		DATE	2-16-59		A



REG. ITEM		PART NO.		DESCRIPTION	SYMB L
				THE TECHNICAL MATERIEL CORP.	
				MAMARONECK, NEW YORK	
				INSULATOR, COIL SUPPORT-# 1	
					GPT10K
				U.C. BIELE	
				DRAWN	
				CHECKED	
				FINAL APPROVAL	
				AX 100	A
				ELEC. DES. APP. MECH. DES. APP.	
ISSUE ITEM		CHANGED FR M			
A 1	TMC PART NO WAS 880	3/30/59	880	OM	
TOLERANCES					
SCALE: 1 A - 1636					
MAXIMUM ALLOWABLE TOLERANCES HAVE BEEN DETERMINED AND ANY DEVIATIONS WILL BE CAUSE FOR REJECTION. REMOVE ALL BURRS AND SHARP EDGES					

REQ. PER UNIT		USED ON	
1	GPT-10K	M DEL	ASSY. N.
			DATE
			2-16-59
AX-101 A			



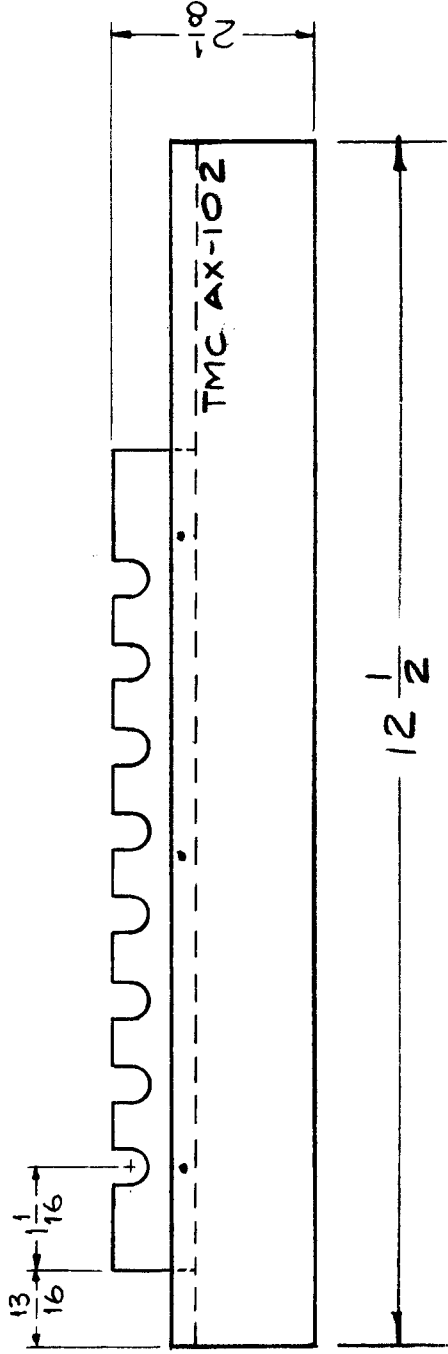
REQ. ITEM	DESCRIPTION	PART NO.	SYMBOL
	THE TECHNICAL MATERIEL CORP. MAMARONECK, NEW YORK		
	INSULATOR, COIL SUPPORT #2		
			GPT10K
	J.C. BIELE		JFM
	DRAWN		FINAL APPR VAL
	CHECKED		AX-101 A
	ELEC. DES. APP		
	MECH. DES. APP		
	FINISH & SPEC. NO.		
	HEATTREAT. SPEC.		
	TYPE & TEMPER		
	MATERIAL		
	STOCK SIZE		
	CH. NO.	880	
	DATE	3/30/59	
	DRAFTS	JLc	
	CHECKER		
	ENG. APP.		
	SCALE:	1A-1637	
TOLERANCES			
MAXIMUM ALLOWABLE TOLERANCES HAVE BEEN DETERMINED AND ANY DEVIATIONS WILL BE CAUSE FOR REJECTION. REMOVE ALL BURRS AND SHARP EDGES			
DEC. DIM. ±			
FRAC. DIM. ±			
ANGULAR DIM. ±			

AX-102 A

USED ON
M DEL
GPT-10K

DATE
2-16-59

REQ. PER UNIT
1



REQ. ITEM	DESCRIPTION	PART NO.	SYMBOL
	THE TECHNICAL MATERIEL CORP. MAMARONECK, NEW YORK		
	INSULATOR, COIL SUPPORT # 3		
	J. C. BIELE		
	DRAWN		
	CHECKED		
	FINAL APPROVAL		
	AX-102 A		
	ELEC. DES. APP. MECH. DES. APP.		
	FINISH & SPEC. NO.		
	HEAT TREAT. SPEC.		
	TYPE & TEMPER		
	MATERIAL		
	STOCK SIZE		
	ENG. APP.		
	CHECKER		
	DRAFTS		
	CH. NO.		
	DATE		
	3/30/59		
	880		
	1 A-1638		
	SCALE:		
	MAXIMUM ALLOWABLE TOLERANCES HAVE BEEN DETERMINED AND ANY DEVIATIONS WILL BE CAUSE FOR REJECTION. REMOVE ALL BURRS AND SHARP EDGES		
	TOLERANCES		
	DEC. DIM. ±		
	FRAC. DIM. ±		
	ANGULAR DIM. ±		
	CHANGED FR M		
	TMC PART NO WAS AA-102		

SYMBOL(S)	ITEM NO.	USED TO MOUNT	QTY	USED ON		AX103
				MODEL	DATE	
				GPT 10.K()7	9/24/64	

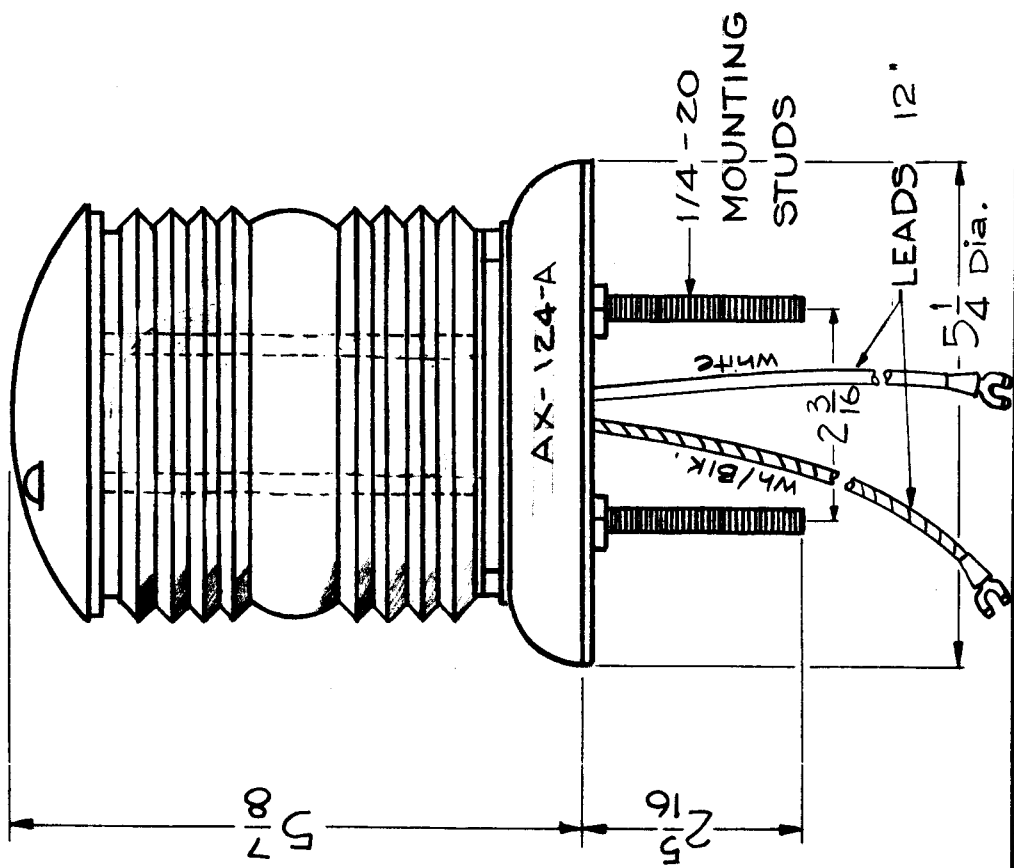
REQ. PER UNIT	MODEL	ASSY. NO.	DATE
1	GPT 10.K()7		9/24/64

ITEM NO.	DESCRIPTION	QTY
4	HA102	4
2	CU102-3 to NS3W03	2
5	CA413	5
2	W927 & 928	2
4	HA102	4
6	A2308 to A2311	6
8	A2309 to A2311	8
2	CU102-3 to NS3W03	2
2	HA102 to A2311	2
6	A2308 to A2311	6
8	A2309 to A2311	8
5	CA412 to AX172	5
2	CU102-3 to NS3W03	2
4	HA102	4
6	A2308 to A2311	6
8	A2309 to A2311	8
5	CA412 to AX172	5
2	CU102-3 to NS3W03	2
2	HA102	2
6	A2308 to A2311	6
8	A2309 to A2311	8
5	CA412 to AX172	5
2	CU102-3 to NS3W03	2
6	A2308 to A2311	6
8	A2309 to A2311	8

REQ. ITEM	PART NO.	DESCRIPTION	SYMBOL
14	16	SCBP1032BN10	SCREW, MACHINE
2	15	SCBP1032BN8	SCREW, MACHINE
19	14	NTH1032BN12	NUT, PLAIN, HEX
4	13	LMS10MRN	WASHER, LOCK, SPLIT
21	12	LWE10MRN	WASHER, LOCK, EXTERNAL HANDLE
2	11	HA102-2BN	WASHER, FLAT
18	10	FW10HBN	FERRULE, HANDLE
4	9	CU139-2B	CLAMP, "G" TYPE
2	8	CU102-3	CLAMP, "G" TYPE
5	7	CU102-2	CLAMP, "G" TYPE
2	6	WA109-56	WASHER, NM
4	5	SCHH1032BN12	SCREW, MACHINE
1	4	CA413	WIRING HARNESS
1	3	A2311	CHASSIS ASSEMBLY
1	2	A2309	PANEL ASSEMBLY, REAR
1	1	A2308	PANEL ASSEMBLY, FRONT

BUDGET 71		DESCRIPTION		SYMBOL	
		THE TECHNICAL MATERIEL CORP.		NEW YORK	
		MAMARONECK.		NEW YORK	
		HVR DECK FINAL ASSEMBLY			
B925		K. Gabler		RAC	
ENG COORD		9-25-64		CHECKED	
DRAWN				FINAL APPROVAL	
TYPE & TEMPER		HEAT TREAT. SPEC.		ELEC. DES. APP.	
FINISH & SPEC. NO.				MECH. DES. APP.	
				AX103	

REQ. PER UNIT	1	MODEL	GPT10K	USED ON ASSY. NO.	AX-124	DATE	5-26-59
				AX-124		B	



ASSEMBLY CONSISTS OF FRAME, SOCKET, RED GLASS LENS AND 12" LEADS OF #14 STRANDED WIRE WITH TERMINALS

USES LAMP BI-10G-1 (SEE 40-A15-240) SUPPLIED AS SEPARATE MAINTENANCE ITEM

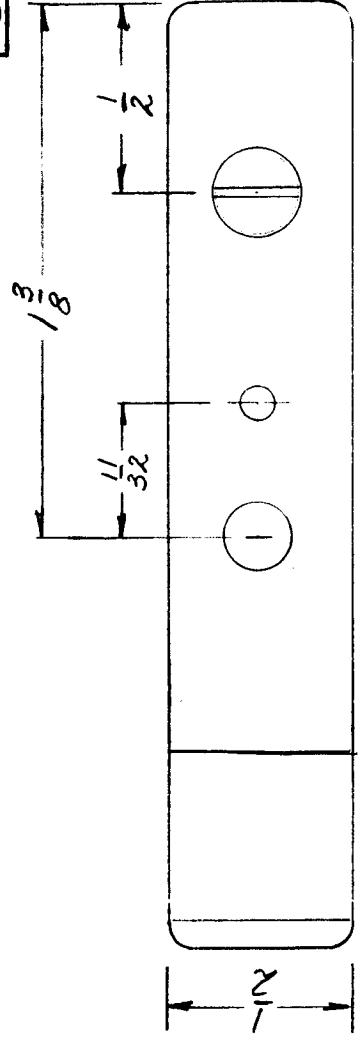
ELECTRICAL SPECS.

230 VOLTS
50/60 CPS
SINGLE PHASE

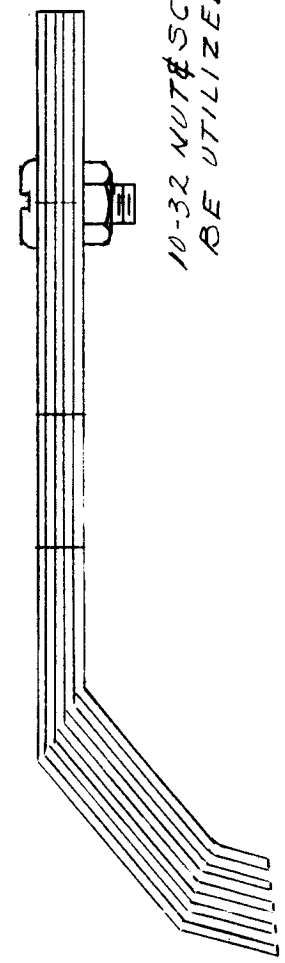
OBSOLETE: REPLACE BY
AX 5260

REG. ITEM	1	PART NO.		DESCRIPTION	SYMBOL
REG. ITEM		STOCK SIZE		THE TECHNICAL MATERIEL CORP.	
REG. ITEM		MATERIAL		MAMARONECK, NEW YORK	
REG. ITEM		TYPE & TEMPER		LAMP SOCKET ASSY	
REG. ITEM		HEAT TREAT. SPEC.			
REG. ITEM		FINISH & SPEC. NO.			
ISSUE ITEM		DATE	CM. NO.	DRAFTS	CHECKER
B		92288		GD/L	
A		62863	9A13		
CHANGED FROM		SCALE: ZA-1696			
TOLERANCES					
DEC. DIM. ±					
FRAC. DIM. ±					
ANGULAR DIM. ±					
MAXIMUM ALLOWABLE TOLERANCES HAVE BEEN DETERMINED AND ANY DEVIATIONS WILL BE CAUSE FOR REJECTION. REMOVE ALL BURRS AND SHARP EDGES					
J.C. BIELE	U.C.	U.C.	U.C.	U.C.	U.C.
DRAWN	CHECKED	FINAL APPROVAL			
					AX-124 B
ELEC. DES. APP.		MECH. DES. APP.			

REQ. PER UNIT	MODEL	USED ON ASSY. NO.	DATE	C
6	AX-117-10K	AX-129	5-19-59	

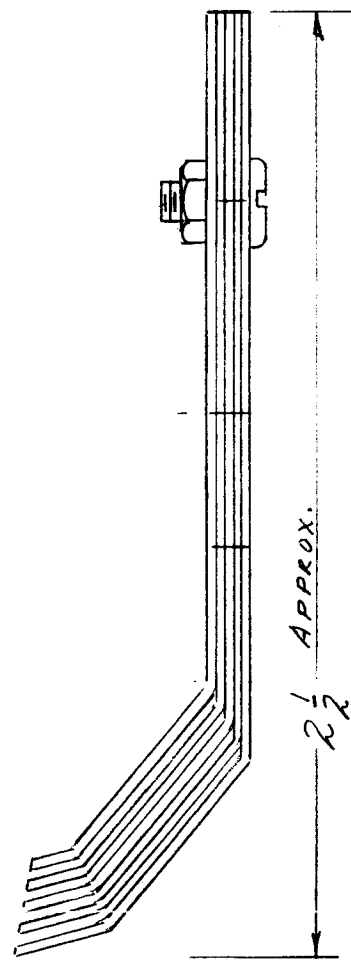


NOTE:
CONTACT FINGERS MUST
BE INSTALLED IN MATCHED
PAIRS AS FURNISHED



10-32 NUT & SCREW MAY
BE UTILIZED

MAT'L - BERYLLIUM COPPER
FIN. : SILVER PLATE
RHODIUM PLATE



1/4" APPROX.

ISSUE ITEM	CHANGED FROM	DATE	CH. NO.	DRAFTS	CHECKER	ENG. APP.	REQ. ITEM	PART NO.	DESCRIPTION	SYMBOL
C 1	NUT REPLACEMENT NOTE & PICT. OF NUT DELE.	9-3-64	12230	MB	MB	MB	CS	CS	THE TECHNICAL MATERIEL CORP. MAMARONECK, NEW YORK	C
B 1	DELETED PRESSURE SPRING & SHIM	5-3-63	8934	MB	MB	MB	STOCK SIZE	CS	CONTACT ASSY., SHORT	C
A 1	ADD SHIM & SPRING PICTORIAL	9-19-60	2994	MB	MB	MB	MATERIAL	CS		C
TOLERANCES										
SCALE: CS A-1701										
MAXIMUM ALLOWABLE TOLERANCES HAVE BEEN DETERMINED AND ANY DEVIATIONS WILL BE CAUSE FOR REJECTION. REMOVE ALL BURRS AND SHARP EDGES										
DEC. DIM. ±										
FRAC. DIM. ±										
ANGULAR DIM. ±										
TYPE & TEMPER										
HEAT TREAT. SPEC.										
DRAWN										
CHECKED										
ELEC. DES. APP. MECH. DES. APP.										
FINISH & SPEC. NO.										
5-19-59										
6										
FINAL APPR VAL										
AX-129										

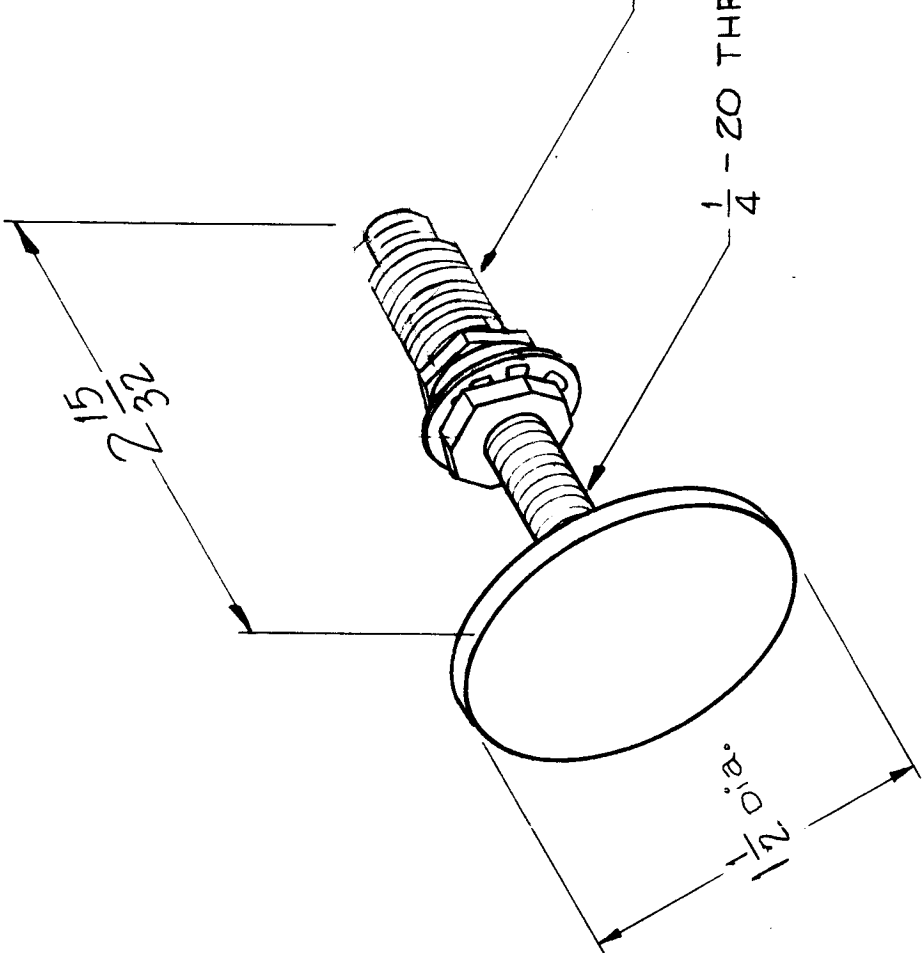
AX-132 A

REQ. PER UNIT	MODEL	USED ON ASSY. NO.	DATE
1	RFB-1	AC113	5-27-59
	RFC-1	AC113	11-22-60
	RFD-1	AC113	12-21-60

ASSEMBLY CONSISTS OF NEUTRALIZING PLATE, PANEL BUSHING, ONE 3/8 INTERNAL TOOTH LOCKWASHER & ONE 3/8-32 HEXAGON NUT

MAT'L ~ BRASS, FINISH ~ SILVER PLATED.

3/8 - 32 THREADS ~ CL-2
 1/4 - 20 THREADS ~ CL-2



REQ. ITEM	PART NO.	DESCRIPTION	SYMBOL
		THE TECHNICAL MATERIEL CORP.	
		MAMARONECK, NEW YORK	
		NEUTRALIZING PLATE ASSY	
		J.C. BIELE	Final Approval
		DRAWN	CHECKED
		TYPE & TEMPER	HEAT TREAT. SPEC.
		FINISH & SPEC. NO.	
ISSUE ITEM	CHANGED FROM	DATE	CH. NO.
A 1	0 1/4-20 Hex Nut Deleted	12-21-60	3780
		DATE	CH. NO.
		DRAFTS	CHECKER
		ENG. APP.	
TOLERANCES			
SCALE: 1A - 1717			
MAXIMUM ALLOWABLE TOLERANCES HAVE BEEN DETERMINED AND ANY DEVIATIONS WILL BE CAUSE FOR REJECTION. REMOVE ALL BURRS AND SHARP EDGES			
DEC. DIM. ±			
FRAC. DIM. ±			
ANGULAR DIM. ±			
			AX-132 A

AX-144
A

QUANTITY	MODEL	ASST. NO.	DATE
2	RTF-2 PA		

DP-2275A

1. SUPPRESSOR, PARASITIC

2. Coil data

- a. 4 turns
- b. #16 AWG

3. Resistor data

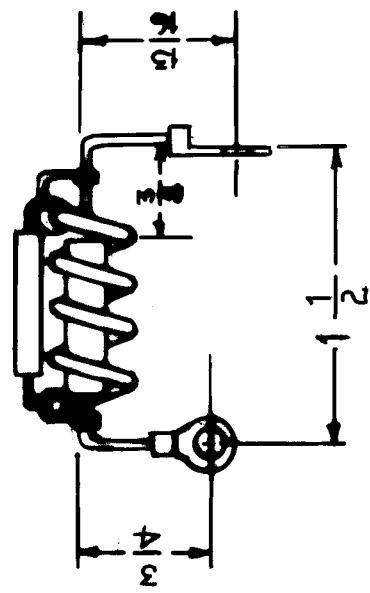
- a. 180 Ω
- b. 2 watts

3.1 Capacitor data

- a. 24 uufd
- b. 500 wvdc

4. Terminal data

- a. 2
- b. solder lug type



REQ. ITEM	PART NO.	DESCRIPTION	SYMBOL
		THE TECHNICAL MATERIEL CORP.	
		MAMARONECK, NEW YORK	
		SUPPRESSOR, PARASITIC	
		PS101 and PS102	
		C.D.D.	
		CHECKED	
		DRAWN	
		HEATTREAT. SPEC.	
		FINISH & SPEC. NO.	
			AX-144
			FINAL APPROVAL
			A

REVISIONS
 1. REVISED & REDRAWN COMP. 11/17/66 17264 P.M.E. [Signature]
 2. CHANGED FROM [Signature]
 DATE CH. NO. DRAFTS CHECKER ENG. APP.

SCALE: 2A-1357

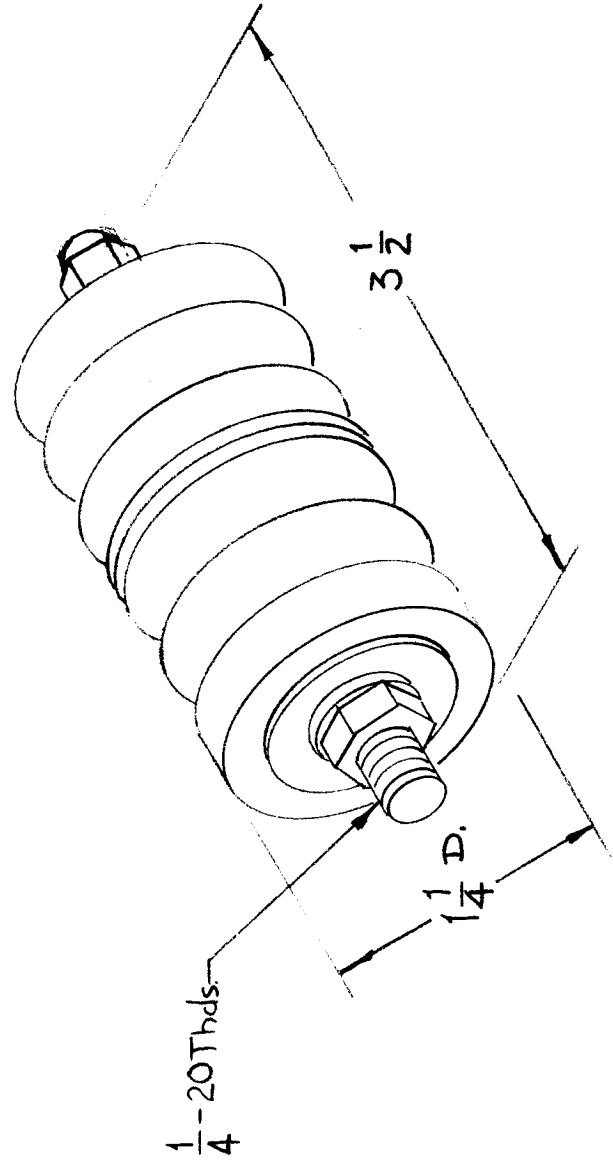
MAXIMUM ALLOWABLE TOLERANCES HAVE BEEN DETERMINED AND ANY DEVIATIONS WILL BE CAUSE FOR REJECTION. REMOVE ALL BURRS AND SHARP EDGES

TOLERANCES

DEC. DIM. ±
 FRAC. DIM. ±
 ANGULAR DIM. ±

REQ. PER. UNIT	MODEL	USED ON
2	AR-109	ASSY. NO.
		DATE

AX-150 A



ASSEMBLY CONSISTS OF
 1/4 - 20 THDS. BRASS, NICKEL
 PLATED ROD WITH STEATITE
 INSULATORS (2), SILICONE
 GASKETS (2), FIBER WASHERS
 (2), FLAT WASHERS (2), HEX.
 NUTS (1), CAP NUTS (1).

REQ. ITEM	PART NO.	DESCRIPTION	SYMBOL
		THE TECHNICAL MATERIEL CORP.	
		MAMARONECK, NEW YORK	
		FEEDTHRU, INSULATED	
		SHORTING RELAY	
		DIMANCUSO	
		8-31-59	
		DRAWN	
		CHECKED	
		FINAL APPROVAL	
		CG.	AX-150
		ELEC. DES. APP	
		MECH. DES. APP	

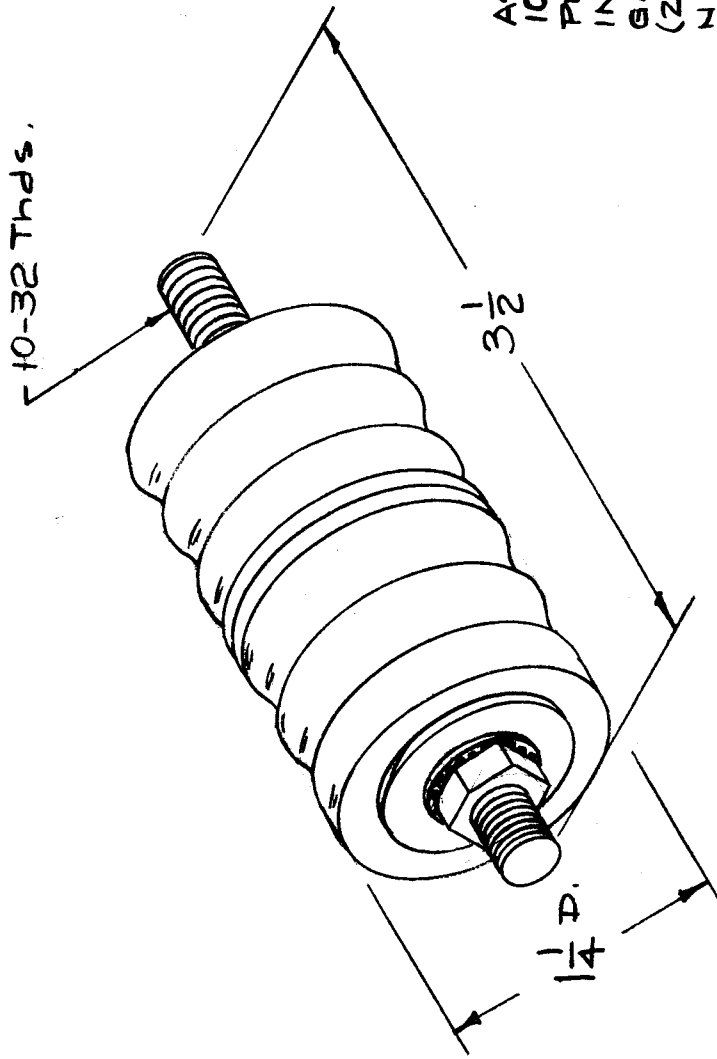
SCALE: A-1734

MAXIMUM ALLOWABLE TOLERANCES HAVE BEEN DETERMINED AND ANY DEVIATIONS WILL BE CAUSE FOR REJECTION. REMOVE ALL BURRS AND SHARP EDGES

DEC. DIM. ±
 FRAC. DIM. ±
 ANGULAR DIM. ±

AX-152 B

USED ON		MODEL	ASSY. NO.	DATE
REQ. PER UNIT	6	AX-103		
	3	AT-100		
		AX-137		



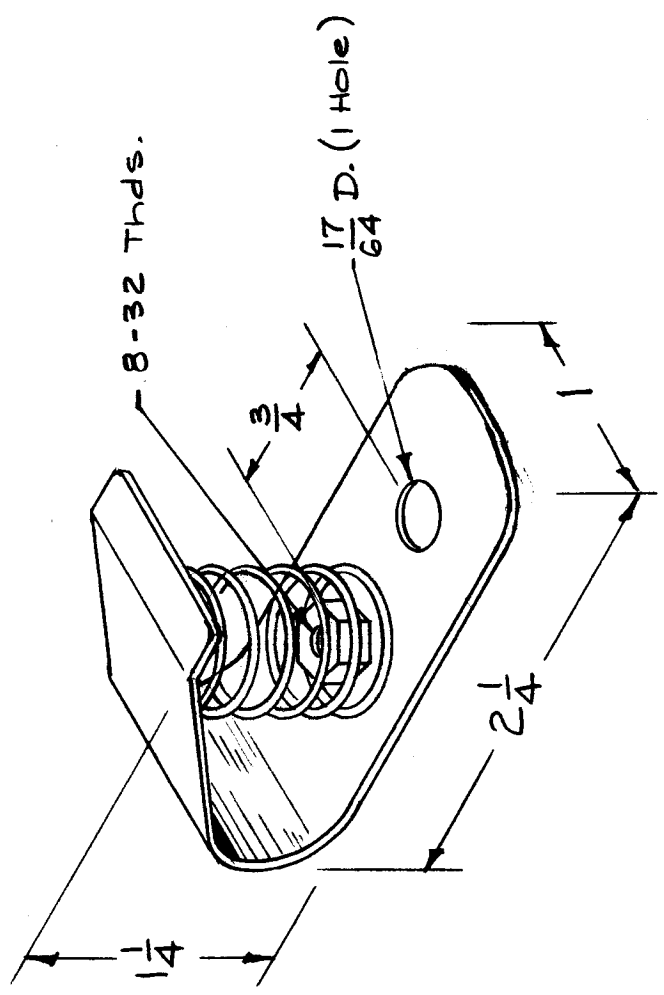
ASSEMBLY CONSISTS OF
 10-32 THD. BRASS, NICKEL
 PLATED ROD WITH STEATITE
 INSULATORS (2), NEOPRENE
 GASKETS (2), FIBER WASHERS
 (2), FLAT WASHERS (2), HEX.
 NUTS (2) Teflon Insulator (1),
 Ext. Lockwashers (2).

REQ. ITEM	DESCRIPTION	SYMBOL
B	2 ON Note Added Ext. Lockwashers 1 ON Note Teflon Ins. Wire 2 Per. Teflon Insulators	THE TECHNICAL MATERIEL CORP. MAMARONECK, NEW YORK
A	2 ADDED TO DATA 1 10-32 Thds INAS 1/4-20	FEEDTHRU, INSULATED
ISSUE ITEM	CHANGED FROM	NPL
DEC. DIM. ±		X
FRAC. DIM. ±		
ANGULAR DIM. ±		
REQ. ITEM	PART NO.	
	STOCK SIZE	
	MATERIAL	
	TYPE & TEMPER	HEATTREAT.SPEC.
	FINISH & SPEC. NO.	
	CHECKER	ENG. APP.
	DATE	CH. NO.
	SCALE:	
	MAXIMUM ALLOWABLE TOLERANCES HAVE BEEN DETERMINED AND ANY DEVIATIONS WILL BE CAUSE FOR REJECTION. REMOVE ALL BURRS AND SHARP EDGES	
	DRAWN	CHECKED
	ELEC. DES. APP	MECH. DES. APP
	FINAL APPROVAL	

AX-153 B

REQ. PER. UNIT	7
MODEL	QPT-10K
REVISION	A X-138
DATE	9-23-59

Assembly is Beryllium Copper,
Nickel Plated



REQ. ITEM	PART NO.	DESCRIPTION	SYMBOL
		THE TECHNICAL MATERIEL CORP.	
		MAMARONECK, NEW YORK	
		CONTACT, H.V.	
		16 ⁷ / ₁₁ /59	CHKD
		DRAWN	CHKD
		HEAT TREAT. SPEC.	
		FINISH & SPEC. NO.	
		ELEC. DES. APP	
		MECH. DES. APP	
		FINAL APPROVAL	
		AX-153	B

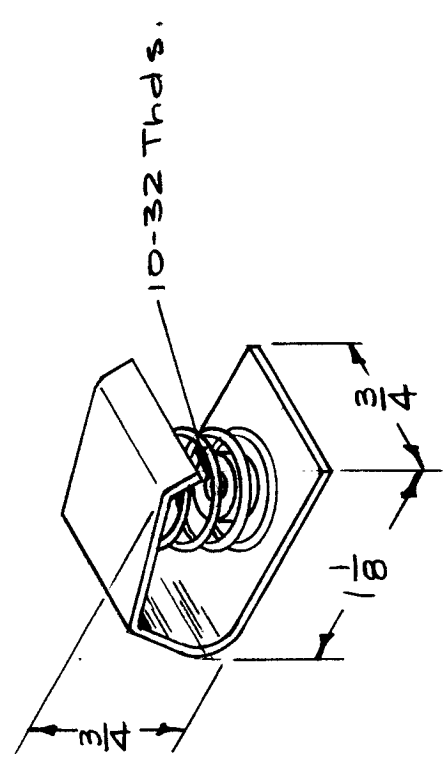
SCALE: NPL 2A1629
 MAXIMUM ALLOWABLE TOLERANCES HAVE BEEN DETERMINED AND ANY DEVIATIONS WILL BE CAUSE FOR REJECTION. REMOVE ALL BURRS AND SHARP EDGES

10/19/63
 7-30-63
 DATE CH. NO.
 10123
 9670
 DRAFTS
 NPL
 CHECKER
 ENG. APP.
 MIF
 MNY
 B 1
 A 1
 ADDED RADII TO PICTORIAL TO AGREE WITH DETAIL
 CHANGED FROM
 TOLERANCES
 DEC. DIM. ±
 FRAC. DIM. ±
 ANGULAR DIM. ±

REQ. PER. UNIT	USED ON	MODEL	SECTION	DATE
1	AX-154	AX-171	AX-154	9-23-59

AX-154	A
--------	---

Assembly is Beryllium Copper,
SILVER PLATE



REQ. ITEM	PART NO.	DESCRIPTION	SYMBOL
A 1		THE TECHNICAL MATERIEL CORP. MAMARONECK, NEW YORK CONTACT, RF	A
ISSUE ITEM	CHANGED FROM	DATE	CH. NO.
	SILVER PLATE WAS NICKEL	5-29-60	2295
TOLERANCES		SCALE:	
DEC. DIM. ±			
FRAC. DIM. ±			
ANGULAR DIM. ±			
MAXIMUM ALLOWABLE TOLERANCES HAVE BEEN DETERMINED AND ANY DEVIATIONS WILL BE CAUSE FOR REJECTION. REMOVE ALL BURRS AND SHARP EDGES		DRAFTS	CHECKER
	NPL	1A1654	1A1654
		TYPE & TEMPER	HEATTREAT.SPEC.
		DRAWN	CHECKED
		6/11/59	Final Approval
			AX-154
			ELEC. DES. APP. MECH. DES. APP.

REQ. PER UNIT	MODEL	ASSY. NO.	DATE
2	RTF-2 PA		

USED ON
AX-155

A

DP-2275A

1. SUPPRESSOR, PARASITIC

2. Coil data
 a. 4 turns
 b. #16 AWG
 c. N/R

3. Resistor data
 a. 180 Ω
 b. 2 watts

- 3.1 Capacitor data
 a. 30 uufd
 b. 500 wvdc

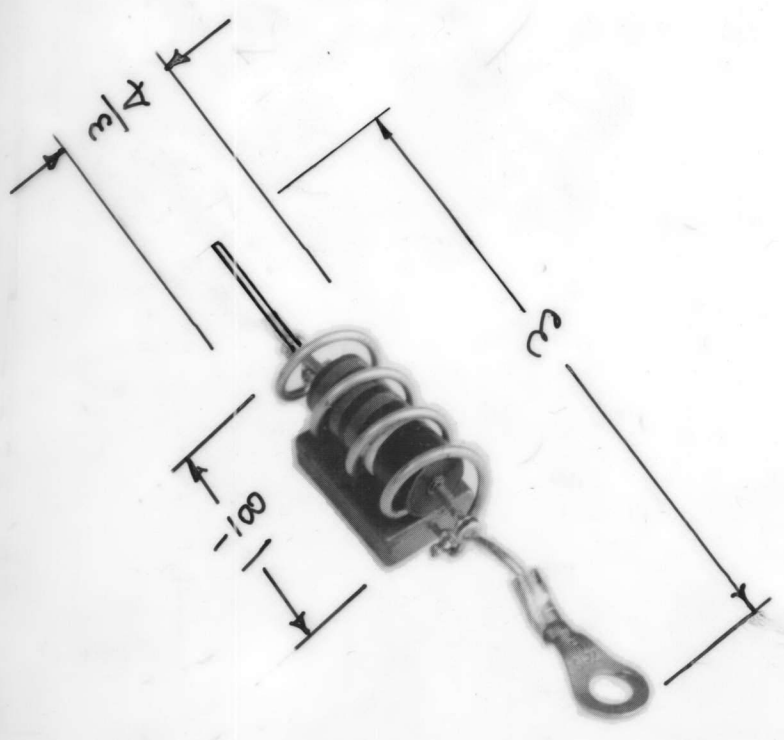
4. See Illustration

5. Wire lead mounted

6. Terminal data
 a. 1
 b. solder lug type

7,8. N/A

9. See below



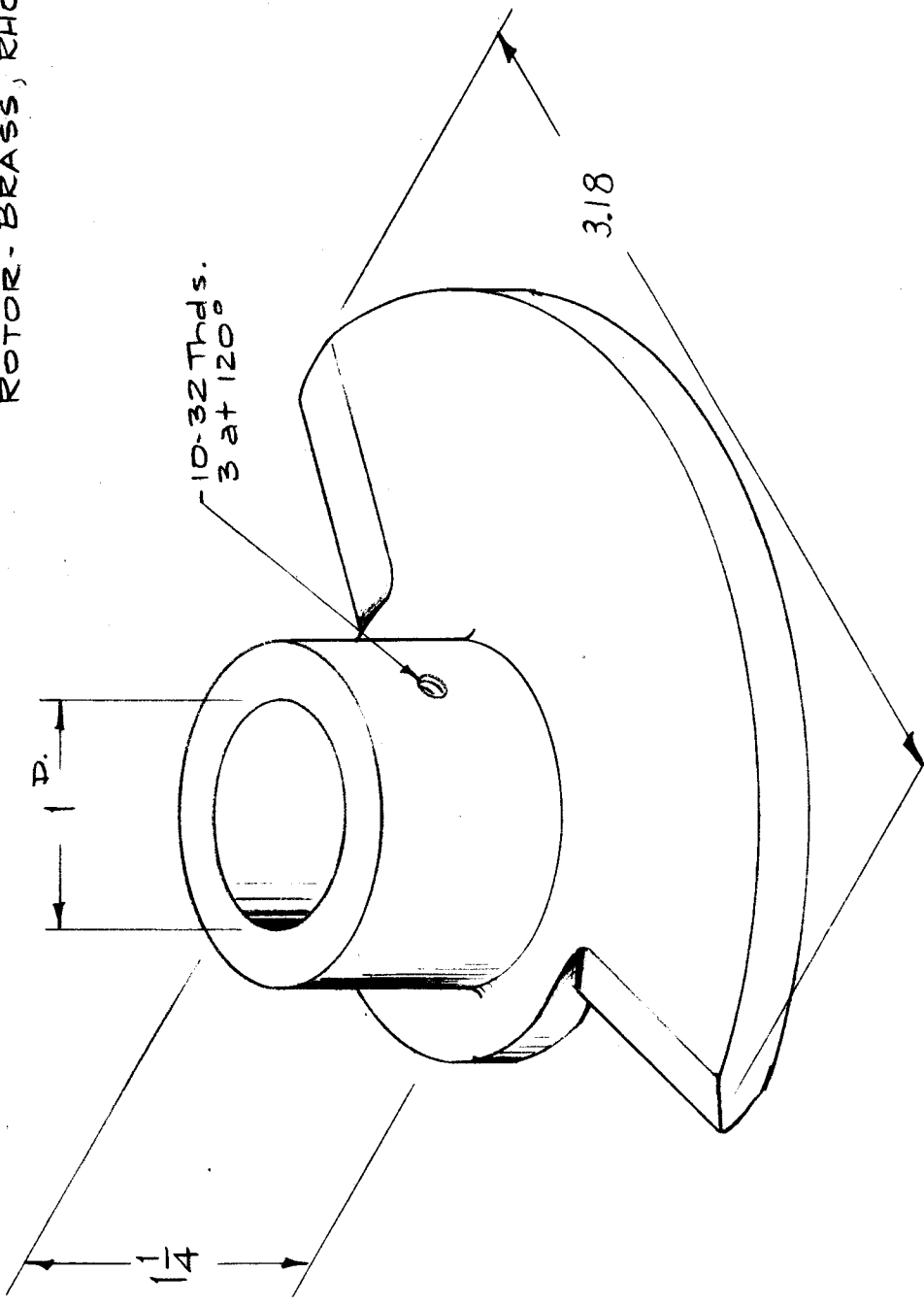
REQ. ITEM	PART NO.	DESCRIPTION	SYMBOL
		THE TECHNICAL MATERIEL CORP.	
		MAMARONECK, NEW YORK	
		SUPPRESSOR, PARASITIC	
		PS103, 104	
		CDD	ARB
		CHECKED	FINAL APPROVAL
		DRAWN	
		WJS	
		ELEC. DES. APP.	MECH. DES. APP.
		FINISH & SPEC. NO.	AX-155
			A

REQ. ITEM	CH. NO.	DATE	CHECKER	ENG. APP.
2	7231	9-25-62	G. J.	[Signature]
TOLERANCES DEC. DIM. \pm FRAC. DIM. \pm ANGULAR DIM. \pm				
TOLERANCES MAXIMUM ALLOWABLE TOLERANCES HAVE BEEN DETERMINED AND ANY DEVIATIONS WILL BE CAUSE FOR REJECTION. REMOVE ALL BURRS AND SHARP EDGES				
SCALE: 2A-1129				
CHANGED FROM				
(1) SOLDER LUG DELETED (3) DIM. WAS 3-1/2, ITEM (6A) WRS (2)				

REQ. PER UNIT	1
MODEL	AS-102
SECTION	AS-102
DATE	9-23-59

AX-158 A

ROTOR - BRASS, RHODIUM PLATE

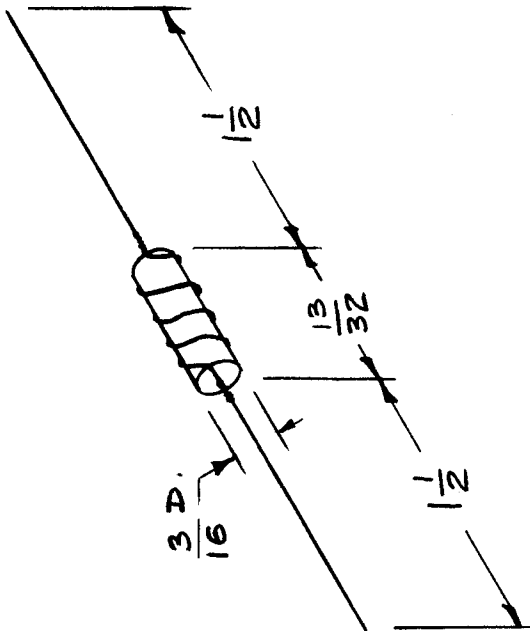


ISSUE ITEM	A	CHG. DIA. FR 4 1/2 TO 3.18	DATE	3-16-67	CH. NO.	17976	DRAFTS	L.A.K.	CHECKER	W.S.	ENG. APP.	
TOLERANCES												
DEC. DIM. ±	DIM. FOR REF.											
FRAC. DIM. ±	DIM. FOR REF.											
ANGULAR DIM. ±	DIM. FOR REF.											
SCALE: — NPL A 16 32												
MAXIMUM ALLOWABLE TOLERANCES HAVE BEEN DETERMINED AND ANY DEVIATIONS WILL BE CAUSE FOR REJECTION. REMOVE ALL BURRS AND SHARP EDGES												
REG. ITEM												
PART NO.												
STOCK SIZE												
MATERIAL												
TYPE & TEMPER		HEAT TREAT. SPEC.										
DRAWN		CHECKED										
DATE	6/15/59	CHECKED										
THE TECHNICAL MATERIEL CORP. MAMARONECK, NEW YORK ROTOR, PA BANDSWITCH												
FINAL APPROVAL AX-158 A												

REQ. PER UNIT	USED ON	
	MODEL	ASSY. NO.
	DATE	
1	SBE-2	9-23-59
1	RFA-1	9-23-59
1	SBC-3	AX-204 11-30-59

AX-160

Form - RC20GF100K
Turns - 4 turns # 22 wire

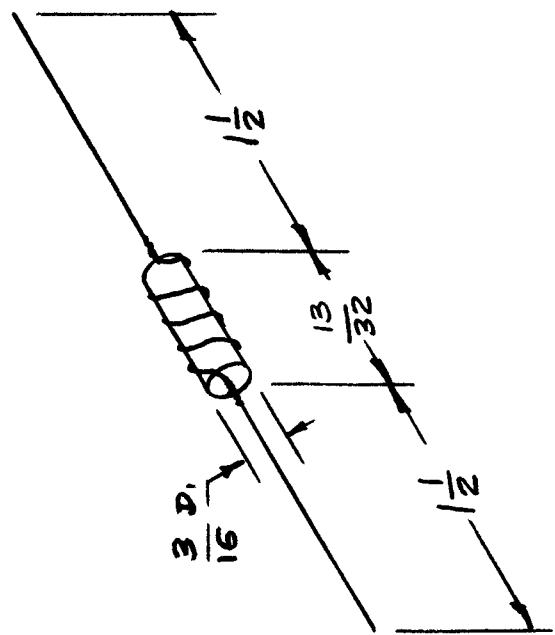


REQ. ITEM	PART NO.	DESCRIPTION	SYMBOL
		THE TECHNICAL MATERIEL CORP.	
		MAMARONECK, NEW YORK	
		SUPPRESSOR, PARASITIC	
ISSUE ITEM	CHANGED FROM	DATE	CH. NO.
TOLERANCES			
DEC. DIM. \pm	DIM.	SCALE:	1A1543-1
FRAC. DIM. \pm	FOR REF.	MAXIMUM ALLOWABLE TOLERANCES HAVE BEEN DETERMINED AND ANY DEVIATIONS WILL BE CAUSE FOR REJECTION. REMOVE ALL BURRS AND SHARP EDGES	
ANGULAR DIM. \pm		DATE	CHECKER
			1A1543-1
		DATE	ENG. APP.
		TYPE & TEMPER	HEAT TREAT. SPEC.
		DRAWN	CHECKED
		9/9/59	
		FINAL APPROVAL	
		AX-160	
		ELEC. DES. APP. MECH. DES. APP.	

REQ. PER. UNIT		USED ON	
MODEL	ASSY. NO.	MODEL	DATE
SBE-2			9-23-59
TRFA-1			9-23-59
SBE-3	AX-204		11-30-59

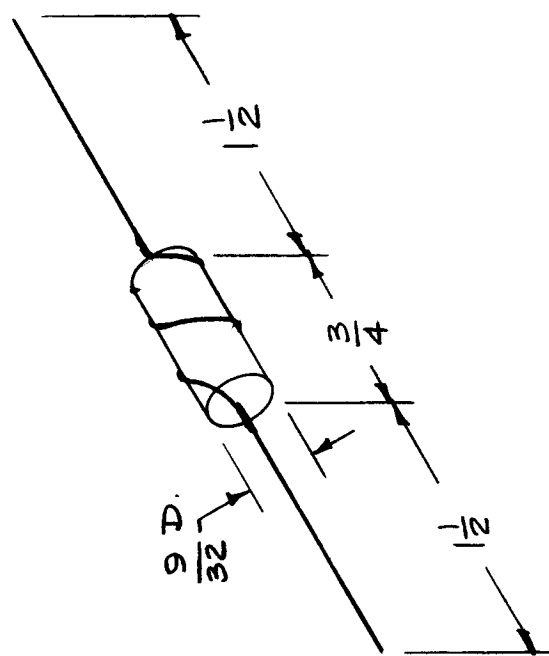
AX-161

Form- RC20GF390K
Turns- 4 turns # 22 wire



REQ. ITEM	DESCRIPTION	SYMBOL
	THE TECHNICAL MATERIEL CORP. MAMARONECK, NEW YORK	
	SUPPRESSOR, PARASITIC	
	6/9/59	AMS
	CHECKED	FINAL APPROVAL
	DRAWN	AX-161
	ELEC. DES. APP. MECH. DES. APP.	
ISSUE ITEM	CHANGED FROM	TOLERANCES
		DEC. DIM. \pm DIM. FRAC. DIM. \pm FOR ANGULAR DIM. \pm REF.
DATE	CH. NO.	DRAFTS
SCALE:	CHECKER	ENG. APP.
1/1543-2		
MAXIMUM ALLOWABLE TOLERANCES HAVE BEEN DETERMINED AND ANY DEVIATIONS WILL BE CAUSE FOR REJECTION. REMOVE ALL BURRS AND SHARP EDGES		
TYPE & TEMPER	HEAT TREAT. SPEC.	FINISH & SPEC. NO.
MATERIAL		
STOCK SIZE		
PART NO.		

REQ. PER UNIT	1	MODEL	REA-1	USED ON	AX-162
ASSY. NO.		DATE	9-23-50		



Form-RC30GF470K
Turns- 2 turns of #22 wire

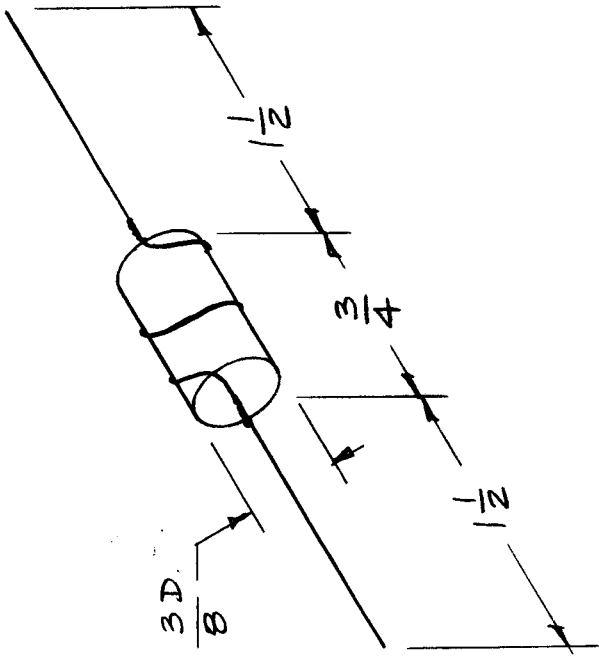
REQ. ITEM	DESCRIPTION	SYMBOL
	THE TECHNICAL MATERIEL CORP.	
	MAMARONECK, NEW YORK	
	SUPPRESSOR, PARASITIC	
	16 ^{9/16} 59	ALB
	CHECKED	
	DRAWN	
	FINISH & SPEC. NO.	AX-162
	ELEC. DES. APP. MECH. DES. APP.	
	FINISH & SPEC. NO.	
	HEAT TREAT. SPEC.	
	TYPE & TEMPER	
	MATERIAL	
	STOCK SIZE	
	PART NO.	
	CHECKER	1A1546-1
	ENG. APP.	
	DRAFTS	
	CH. NO.	
	DATE	
	CHANGED FROM	
	TOLERANCES	
DEC. DIM. ±	DIM.	
FRAC. DIM. ±	FOR REF.	
ANGULAR DIM. ±		

MAXIMUM ALLOWABLE TOLERANCES HAVE BEEN DETERMINED AND ANY DEVIATIONS WILL BE CAUSE FOR REJECTION. REMOVE ALL BURRS AND SHARP EDGES

REQ. PER. UNIT	MODEL	ASSY. N.	DATE
1	SBE-1	PS 101	9-23-59
1	RFA-1	PS 202	9-23-59
1	SBE-3	AX-204	11-30-59

AX-164

Form- RC42GF120K
Turns - 2 turns #18 wire



REQ. ITEM		PART NO.		SYMBOL	
				DESCRIPTION	
				THE TECHNICAL MATERIEL CORP.	
				MAMARONECK, NEW YORK	
				SUPPRESSOR, PARASITIC	
				MATERIAL	
				16 ^{9/16} /59 <i>Wire</i>	
				CHECKED	
				DRAWN	
				TYPE & TEMPER	
				HEAT TREAT. SPEC.	
				FINISH & SPEC. NO.	
				ELEC. DES. APP. MECH. DES. APP.	
				AX-164	
				FINAL APPROVAL	
				<i>APP</i>	

SCALE: 1A1453

MAXIMUM ALLOWABLE TOLERANCES HAVE BEEN DETERMINED AND ANY DEVIATIONS WILL BE CAUSE FOR REJECTION. REMOVE ALL BURRS AND SHARP EDGES

ISSUE ITEM CHANGED FROM DATE CH. NO. DRAFTS CHECKER ENG. APP.

TOLERANCES

DEC. DIM. ± DIM. FOR REF.

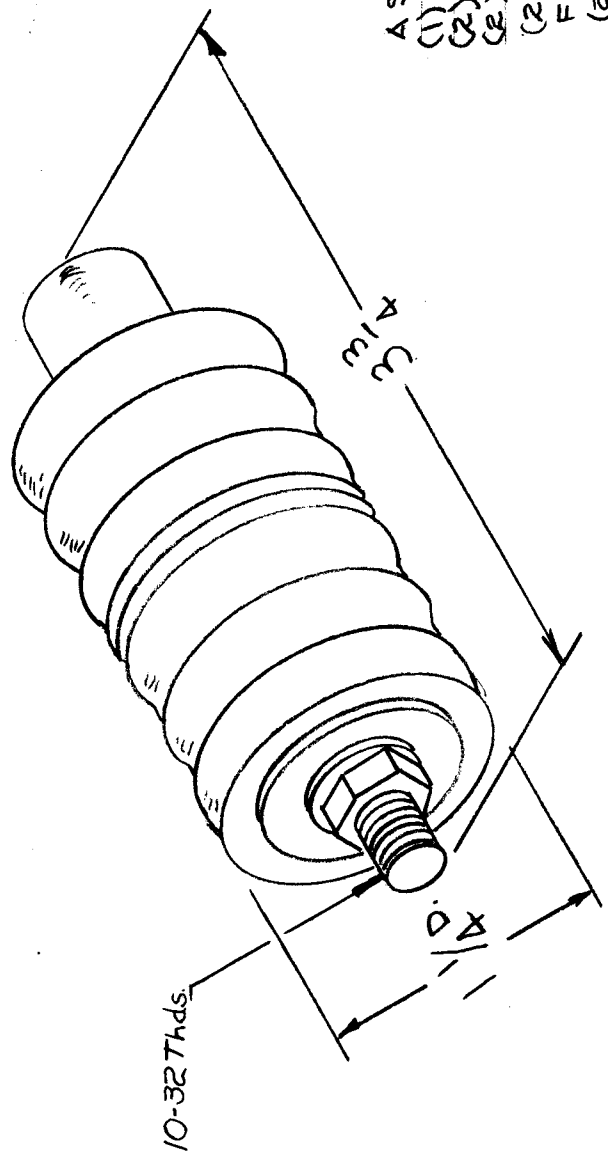
FRAC. DIM. ±

ANGULAR DIM. ± REF.

REQ. PER UNIT	MODEL	USED ON	DATE
7	GPT-16K	AX-163	9-23-59
8	GPT-40K	AP-105	1-20-60
3	GPT-40K	AX-212	1-20-60

AX-172

B



- ASSEMBLY CONSISTS OF:
- (1) STUD (W/BUTTON),
 - (2) STEATITE INSULATORS,
 - (2) NEOPRENE GASKETS,
 - (2) FIBER WASHERS,
 - FLAT WASHER & HEX NUT
 - (2) TEFLON INSULATORS

REQ. ITEM	DESCRIPTION	SYMBOL
B 1	3-3/8 DIM WAS 3-3/8 TEFLON INSULATORS (2) DATA ADDED	THE TECHNICAL MATERIEL CORP. MAMARONECK, NEW YORK
A 1	DIM. 10-32 THDS. ADDED	FEED-THRU, INSULATED
ISSUE ITEM	CHANGED FROM	
TOLERANCES		
DEC. DIM. ±		
FRAC. DIM. ±		
ANGULAR DIM. ±		
DATE	CH. NO.	DRAFTS
11-16-60	7622	73
8-16-60	27	73
SCALE:	NPL	1A-1744
DATE	CH. NO.	DRAFTS
11-16-60	7622	73
8-16-60	27	73
CHECKER	ENG. APP.	
R. J. [Signature]	[Signature]	
TYPE & TEMPER	HEAT TREAT. SPEC.	
DRAWN	CHECKED	
AC 9/15/59	Jude	
		FINAL APPROVAL
		AX-172
		B
FINISH & SPEC. NO.		
ELEC. DES. APP. MECH. DES. APP.		

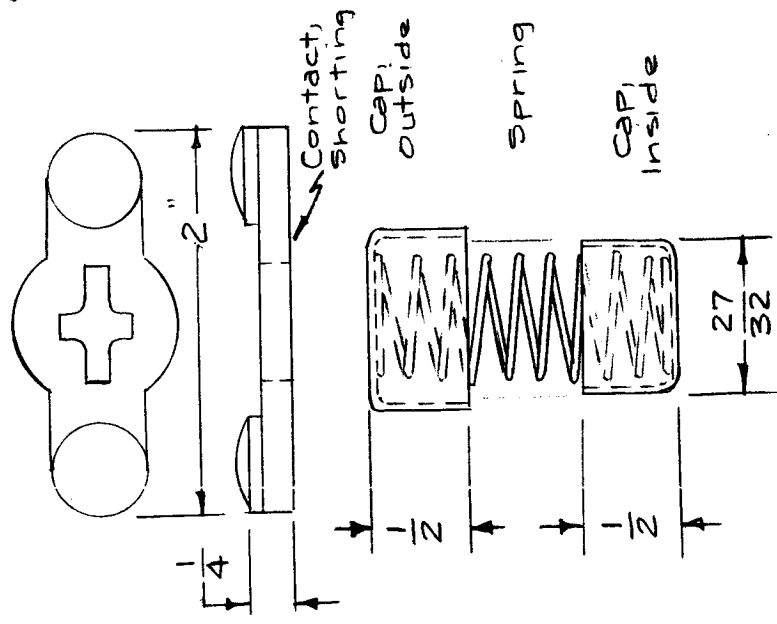
Dimensions For Reference Only

AX-176

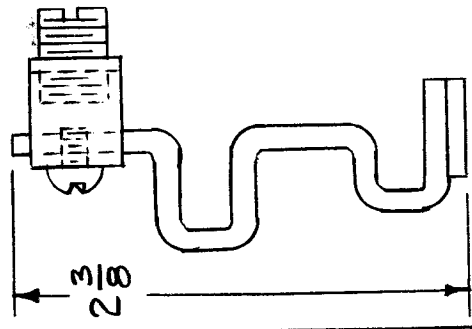
USED ON
ASSY. NO.
DATE

REQ. PER UNIT
MODEL
GPT-10K

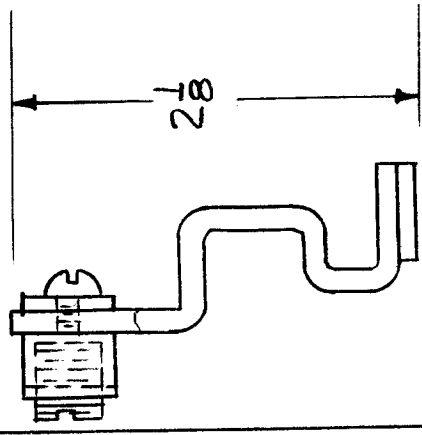
AX-176 CONTACT KIT CONSISTS OF:



MOVEABLE CONTACT ASS'Y.
3 Each



LINE CONTACT
3 Each



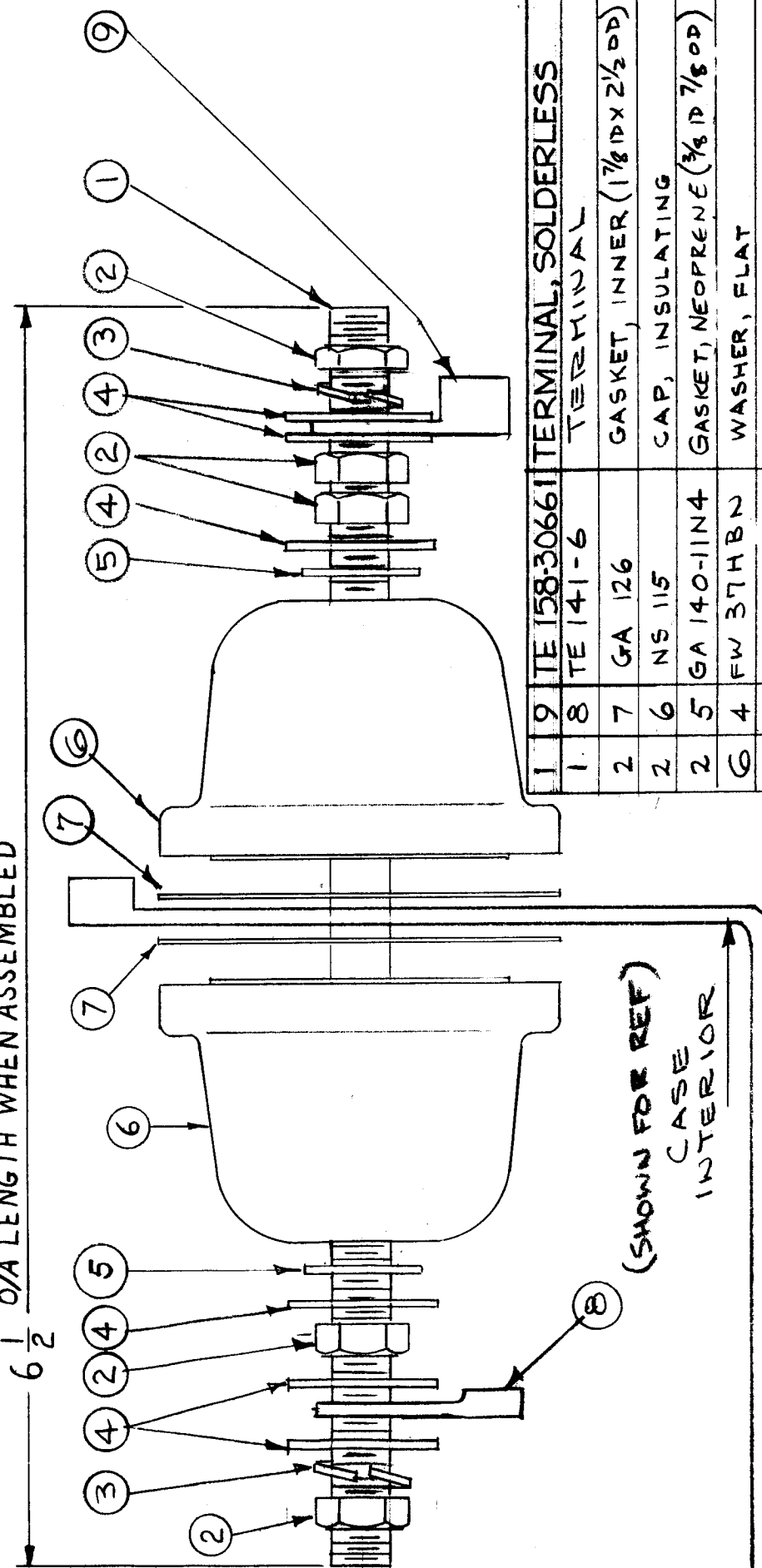
LOAD CONTACT
3 Each

FOR KIT WITH 1 each of Above - Use TMC KIT # PO-183

REQ. ITEM	DESCRIPTION	SYMBOL
	THE TECHNICAL MATERIEL CORP. MAMARONECK, NEW YORK	
	RL-130 CONTACT KIT (TRIPLE)	
	16 11/32/59	22B
	DRAWN	CHECKED
	TYPE & TEMPER	HEAT TREAT. SPEC.
	MATERIAL	
	STOCK SIZE	
	PART NO.	
ISSUE	CHANGED FROM	
DATE	CH. NO.	DRAFTS
SCALE:		CHECKER
		ENG. APP.
		NO NPL 1A1750
<p>MAXIMUM ALLOWABLE TOLERANCES HAVE BEEN DETERMINED AND ANY DEVIATIONS WILL BE CAUSE FOR REJECTION. REMOVE ALL BURRS AND SHARP EDGES</p>		
DEC. DIM. ±	DIM. FOR REF	
FRAC. DIM. ±	REF	
ANGULAR DIM. ±	ONLY	
	TOLERANCES	
	FINISH & SPEC. NO.	
	ELEC. DES. APP. MECH. DES. APP.	
	FINAL APPROVAL	AX-176

REQ. PER. UNIT	1
MODEL	TU-2
USED ON	ATS (50) TG-17-59
ASSY. NO.	AX196
DATE	

6 1/2 O/A LENGTH WHEN ASSEMBLED



1	9	TE 158-30661	TERMINAL, SOLDERLESS	WIRE SIZE 4
1	8	TE 141-6	TERMINAL	WIRE SIZE 10
2	7	GA 126	GASKET, INNER (1 7/8 ID X 2 1/2 OD)	1/32 THK
2	6	NS 115	CAP, INSULATING	
2	5	GA 140-11N4	GASKET, NEOPRENE (3/8 ID 7/8 OD)	1/16 THK
6	4	FW 37HBN	WASHER, FLAT	
2	3	LWS 37MRN	LOCKWASHER, SPRING TYPE	
5	2	NTH3716BN20	NUT, HEX	
1	1	PM 579	ROD, FEED THRU	

REG. ITEM	PART NO.	DESCRIPTION	SYMBOL
		THE TECHNICAL MATERIEL CORP.	
		MAMARONECK, NEW YORK	
		ANTENNA FEEDTHRU	
ISSUE ITEM	CHANGED FROM	DATE	CH. NO.
A	REVISED COMPLETELY	4-10-67	18030
		DATE	CH. NO.
		4-10-67	18030
		DRAFTS	CHECKER
			L.A.K. J.D.
		DATE	CH. NO.
		4-10-67	18030
TOLERANCES			
SCALE:			
MAXIMUM ALLOWABLE TOLERANCES HAVE BEEN DETERMINED AND ANY DEVIATIONS WILL BE CAUSE FOR REJECTION. REMOVE ALL BURRS AND SHARP EDGES			
DEC. DIM. ±			
FRAC. DIM. ±			
ANGULAR DIM. ±			
		TYPE & TEMPER	HEAT TREAT. SPEC.
		MATERIAL	
		STOCK SIZE	
		FINISH & SPEC. NO.	
		DRAWN	CHECKED
		J.H.	J.D.
		DATE	DATE
		9-17-59	9-17-59
		APPROVED	APPROVED
		J.H.	J.D.
		FINAL APPR. VAL	FINAL APPR. VAL
		AX196	AX196