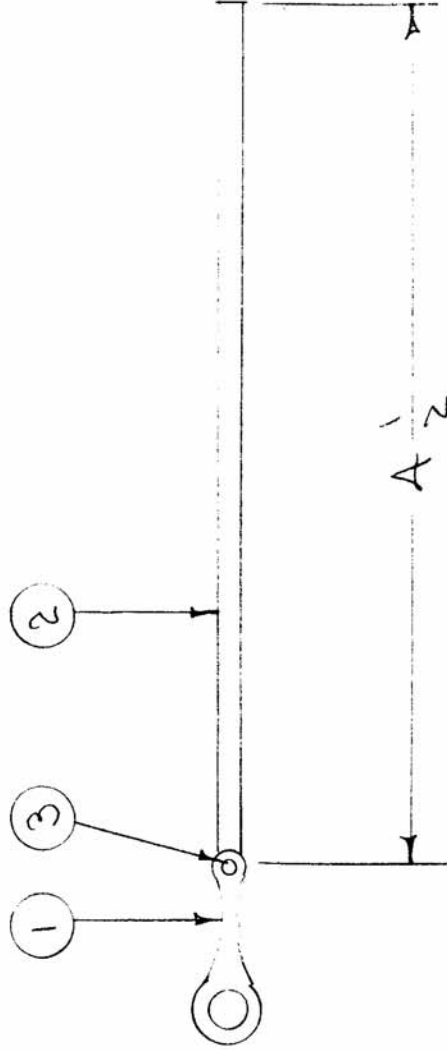


IF IT IS FOUND DESIRABLE TO CHANGE ANY TOLERANCE OR OTHER DETAIL SPECIFIED ON THIS DRAWING NOTIFY THE PURCHASER PROMPTLY.

MAXIMUM ALLOWABLE TOLERANCES HAVE BEEN DETERMINED AND DEVIATIONS WILL BE CAUSE FOR REJECTION. REMOVE ALL BURRS AND SHARP EDGES



A-852

A

USED ON

PROJECT NO.

ASSY. NO.

DATE

MODEL

REQ PER UNIT	PROJECT NO.	ASSY. NO.	DATE
2	285		10-14-54
2	285		10-14-54

X	3	BS-100	SOLDER, SOFT	SYMBOL
4 3/4"	2	WL-103-1	SHIELD, FLEX.	
1	1	TE-10A-6	TERMINAL, LOCKING	
REQ. ITEM	PART NO.	DESCRIPTION		
STOCK SIZE		THE TECHNICAL MATERIEL CORP.		
MATERIAL		MAMARONECK. NEW YORK		
WEIGHT PER PC.		GROUND STRAP ASSY.		
TYPE & TEMPER		P. M. O.		
HEAT TREAT. SPEC.		DRAWN		
FINISH & SPEC. NO.		ELEC. DES. APP.		
		MECH. DES. APP.		
		CHECKED		
		FINAL APPROVAL		
		A. J. J.		
		A-852		
		A		

ISSUE ITEM	CHANGED FROM	DATE	CN. NO.	DRAFTS	CHECKER	ENG. APP.
A 1	ITEM 2 WAS WL-103-1	10/19/54	1	1	P. R.	J. R. C.
TOLERANCES						
SCALE						
DRILL, PUNCH, COMMERCIAL STOCK SIZES AND MANUFACTURERS TOLERANCES ARE NOT INCLUDED.						
DEC. DIM. ±						
ALL OTHERS						
FRAC. DIM. ± 1/8						
ANGULAR DIM. ±						