

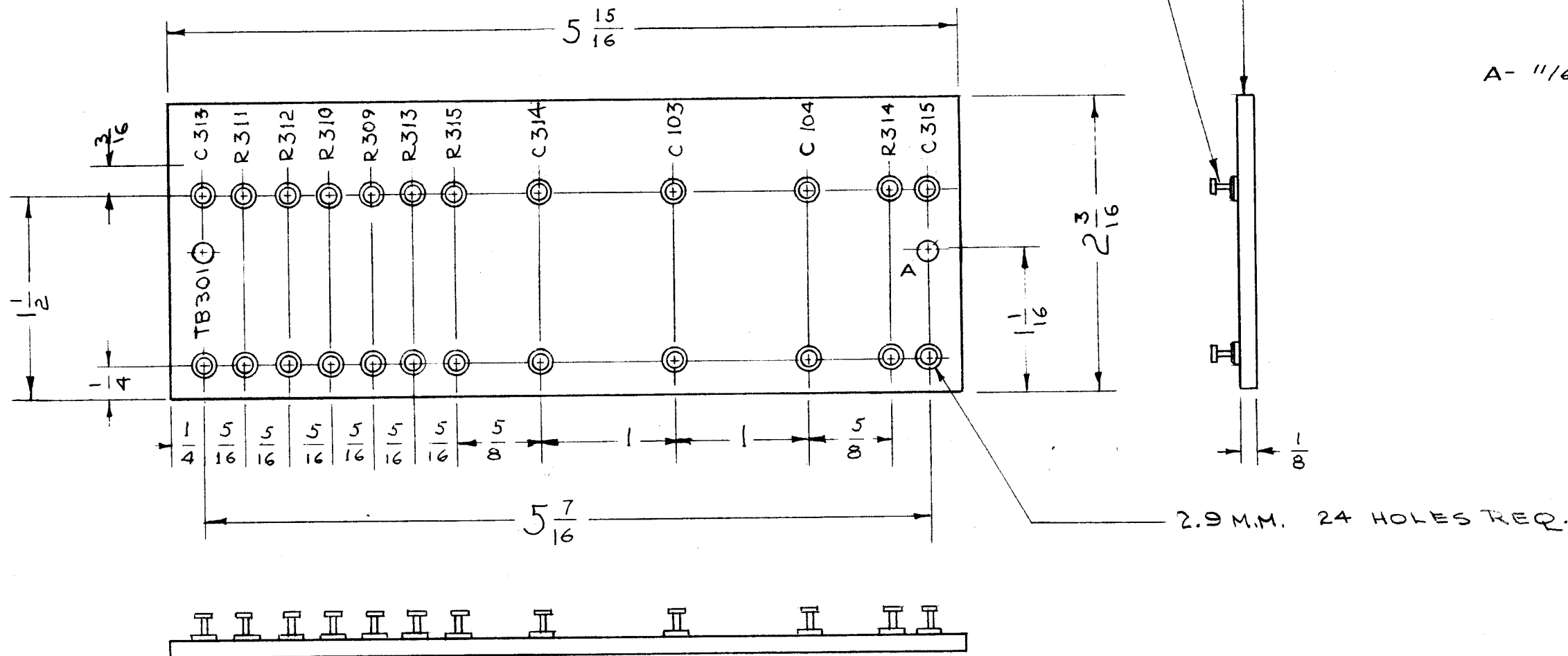
IF IT IS FOUND DESIRABLE TO CHANGE ANY TOLERANCE OR OTHER DETAIL SPECIFIED ON THIS DRAWING NOTIFY THE PURCHASER PROMPTLY.

MAXIMUM ALLOWABLE TOLERANCES HAVE BEEN DETERMINED AND DEVIATIONS WILL BE CAUSE FOR REJECTION. REMOVE ALL BURRS AND SHARP EDGES

MARKING PROCESS: AS PER TMC SPECIFICATION S-72Z

LETTERING: 1/8 HIGH BLACK, GOTHIC LOCATED AS SHOWN.

A-810 A



A	1	2.9 M.M WAS #33	10/20/54	1	C.D.D.		
ISSUE	ITEM	CHANGED FROM	DATE	CN. NO.	DRAFTS	CHECKER	ENG. APP.
TOLERANCES		SCALE:					
ALL OTHERS	DEC. DIM. ±	DRILL, PUNCH, COMMERCIAL STOCK SIZES AND MANUFACTURERS TOLERANCES ARE NOT INCLUDED.					
	FRAC. DIM. ±						
	ANGULAR DIM. ±						

PER UNIT QTY.	PMO	285	8-30-54
MODEL	PROJECT NO.	ASS'Y. NO.	DATE
USED ON			

24	2	TE-105-4	TERMINAL LUG	
1	1	PX235	TERMINAL BOARD (NO DRAWING)	
REQ.	ITEM	PART NO.	DESCRIPTION	SYMBOL
1/8		THE TECHNICAL MATERIEL CORP.		
STOCK SIZE		MAMARONECK. NEW YORK		
PHENOLIC		TERMINAL BOARD, OVEN		
MATERIAL		PMO		
XXXP LAMINATE		M.B. 8-26-54		
TYPE & TEMPER		DRAWN		
H		ELEC. DES. APP.		
HEAT TREAT. SPEC.		MECH. DES. APP.		
NATURAL		CHECKED		
FINISH & SPEC. NO.		FINAL APPROVAL		
		A-810 A		