

IF IT IS FOUND DESIRABLE TO CHANGE ANY TOLERANCE OR OTHER DETAIL SPECIFIED ON THIS DRAWING NOTIFY THE PURCHASER PROMPTLY.

MAXIMUM ALLOWABLE TOLERANCES HAVE BEEN DETERMINED AND DEVIATIONS WILL BE CAUSE FOR REJECTION. REMOVE ALL BURRS AND SHARP EDGES

A-721

USED ON

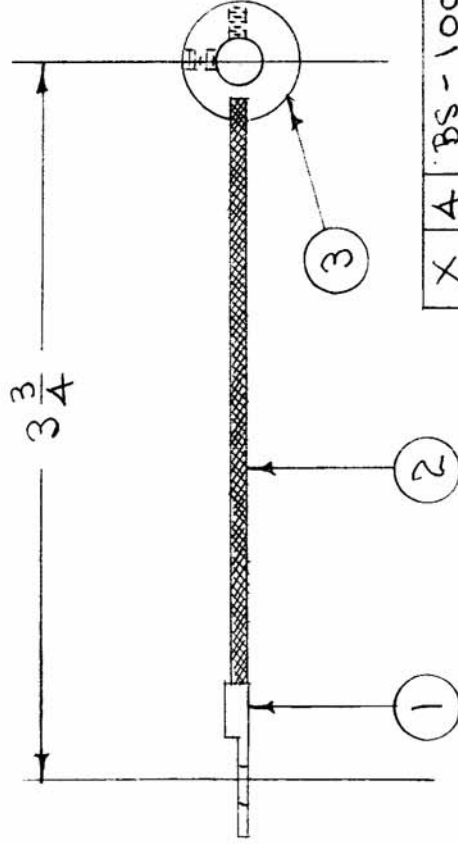
MODEL PROJECT NO. ASSY. NO. DATE

TAC-1 132 A-723 1-25-54

REQ PER UNIT

2

NOTE POSITION OF TAPPED HOLES AND FLAT SIDE OF LUG.



X 4	BS-100	SOLDER, SOFT	DESCRIPTION	SYMBOL
1	PM-2M1	COLLAR, GD. STRAP		
3"	WL-103-4	SHIELD, FLEX.		
1	TE-141-3	LUG, TERMINAL		
REQ. ITEM	PART NO.			
#	#			
STOCK SIZE				
#	#			
MATERIAL	WEIGHT PER PC.			
#	#			
TYPE & TEMPER				
#	#			
HEAT TREAT. SPEC.				
SILVER PLATE .0003				
FINISH & SPEC. NO.				

THE TECHNICAL MATERIEL CORP.

MAMARONECK, NEW YORK

GROUND STRAP ASSY, SHAFT

TAC-1

C.B.D.

DRAWN

ELEC. DES. APP.

MECH. DES. APP.

W.P.S.

J.A.D.

W.P.S.

W.P.S.

CHECKED

FINAL APPROVAL

A-721

SCALE #

TOLERANCES

DRILL, PUNCH, COMMERCIAL STOCK SIZES AND MANUFACTURERS TOLERANCES ARE NOT INCLUDED.

DEC. DIM. ±
FRAC. DIM. ± 1/16
ANGULAR DIM. ±