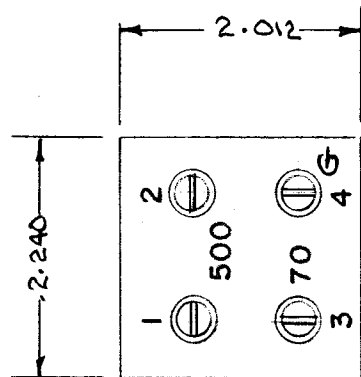
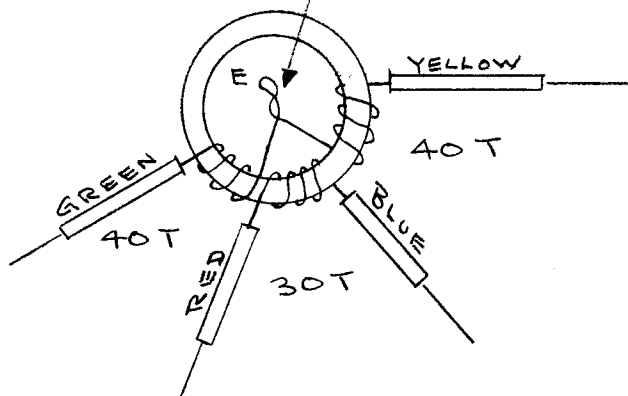
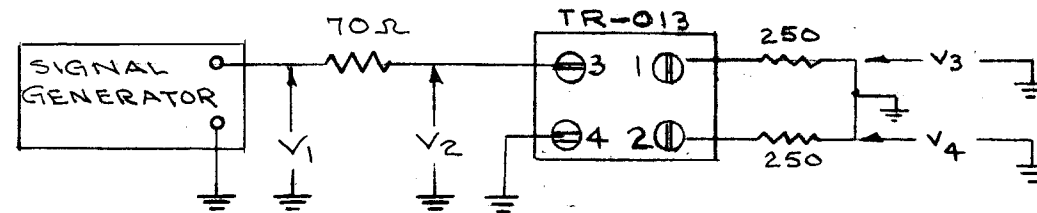


BRING OUT TAP AS SHOWN FOR TEST PURPOSES

BOTH WINDINGS SAME DIRECTION



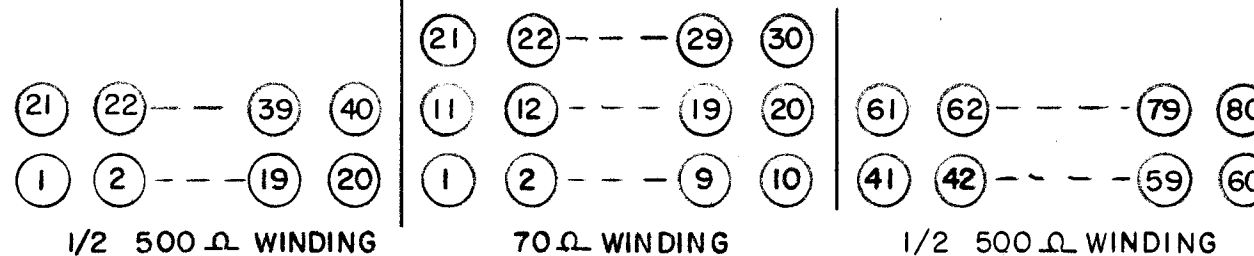
STAMP AS SHOWN BLACK GOTHIC



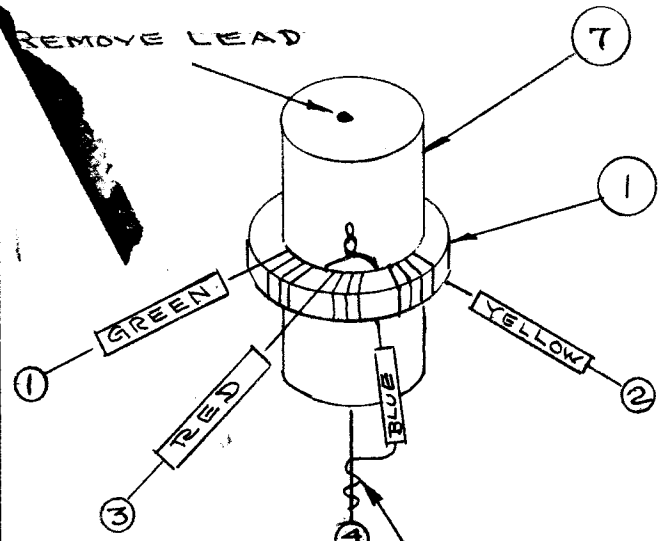
ELECTRICAL TEST DATA

f kc	* TRF VOLTS			
	V1	V2	V3	V4
20	1.0	.45	.54	.58
60	1.0	.5	.6	.6
200	1.0	.56	.55	.58

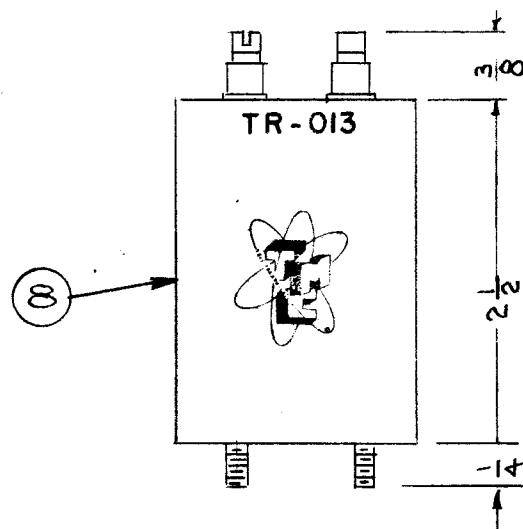
* H.R. VTVM ABOVE READINGS ± 10%



REMOVE LEAD



SOLDER TO TERMINAL #4 AS SUPPORT FOR COIL



NOTE: FINISH
S-114 ZINC CHROMATE PRIMER
S-115 SMOOTH GRAY ENAMEL

**NOT TO BE RELEASED
W/O AUTHORIZATION**
AUTH. BY: _____
DATE: _____

X	10	GL-106	COMPOUND	
X	9	BS-100	SOLDER, SOFT	
1	8	BX-106	CASE, TRANSFORMER	
1	7	CN-100-3	CAPACITOR, FIXED	
X	6	PX-104-6-.053	INSULATION, SLEEVING	BLUE
X	5	PX-104-3-.053	"	RED
X	4	PX-104-2-.053	"	YEL
X	3	PX-104-1-.053	"	GREEN
X	2	WI-102-11-9	WIRE, MAGNET	
1	1	CI-104	CORE	
REQ. ITEM	PART NO.		DESCRIPTION	SYMBOL
THE TECHNICAL MATERIEL CORP. MAMARONECK, NEW YORK				
TR-013				
MATERIAL				
70Ω UNBAL - 500Ω BAL				
TYPE & TEMPER		HEAT TREAT. SPEC.	DRAWN	CHECKED
SEE NOTE			<i>Jade</i>	<i>ebb</i>
FINISH & SPEC. NO.		ELEC. DES. APP.	MECH. DES. APP.	FINAL APPROVAL
				<i>OAB</i>

C	1	ITEM(2) WAS WI-102-29	6-5-63	9124	<i>E</i>	<i>JAB</i>	<i>JAB</i>
B	1	TEST DATA CLARIFIED	5/9/56	2	<i>JAB</i>		<i>OAB</i>
A	1	REDRAWN CAN ADDED	5/4/56	1	<i>JAB</i>	<i>ebb</i>	<i>OAB</i>
ISSUE ITEM	CHANGED FROM		DATE	CH. NO.	DRAFTS	CHECKER	ENG. APP.
TOLERANCES			SCALE:				
DEC. DIM. ±			MAXIMUM ALLOWABLE TOLERANCES HAVE BEEN DETERMINED AND ANY DEVIATIONS WILL BE CAUSE FOR REJECTION.				
FRAC. DIM. ±			REMOVE ALL BURRS AND SHARP EDGES				
ANGULAR DIM. ±							
1	REQ. PER UNIT	TR-013	526			5-3-56	
		MODEL	PROJECT NO.			ASS'Y. NO.	DATE
USED ON							