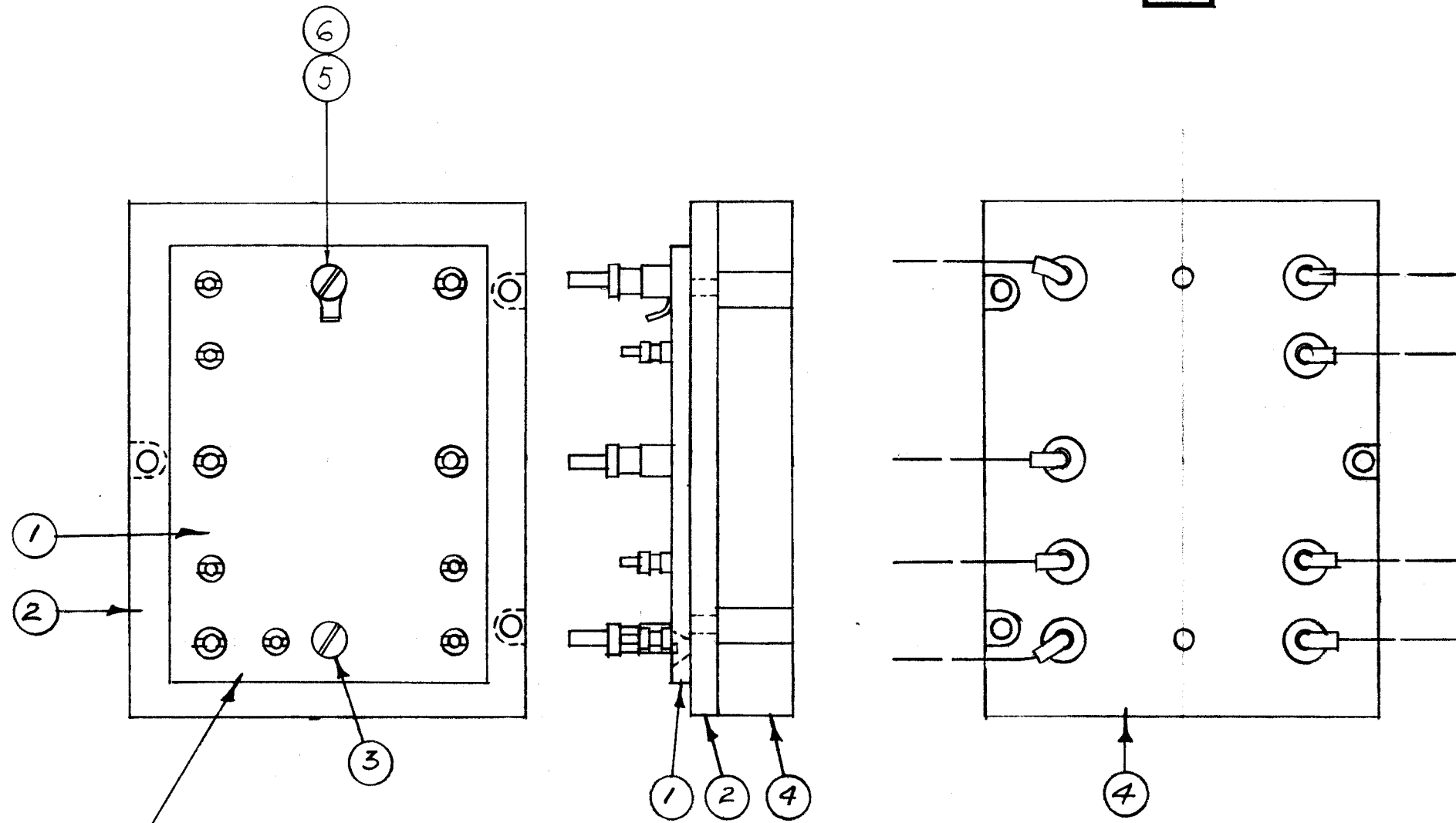


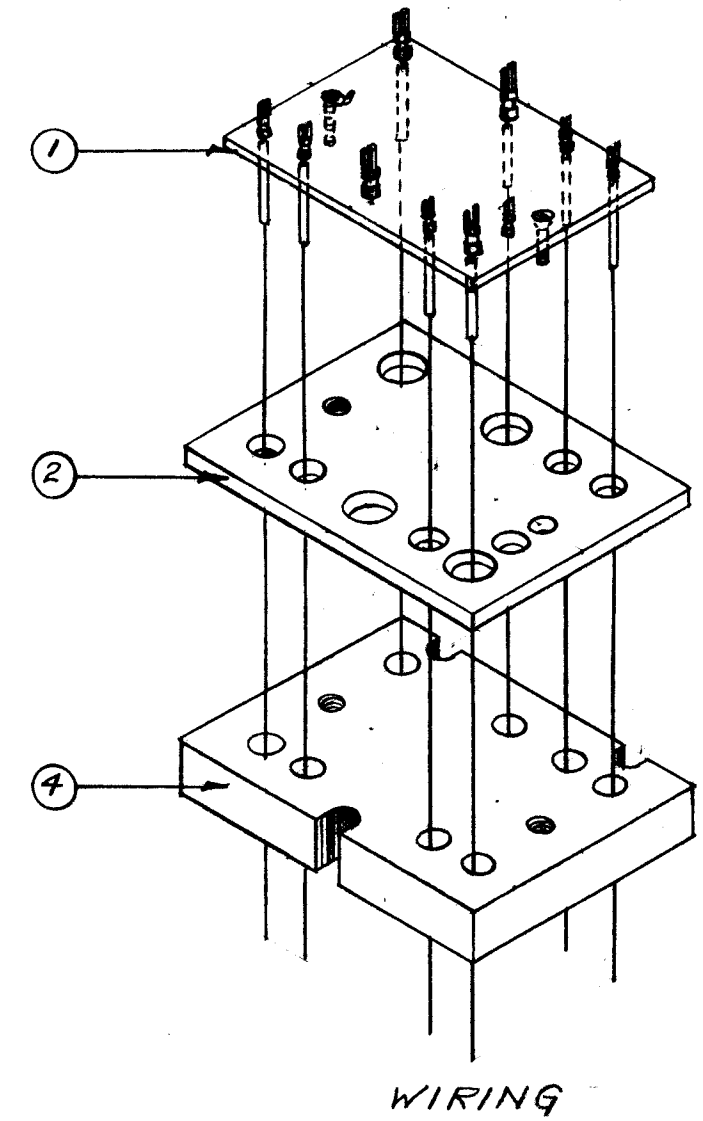
IF IT IS FOUND DESIRABLE TO CHANGE ANY TOLERANCE OR OTHER DETAIL SPECIFIED ON THIS DRAWING NOTIFY THE PURCHASER PROMPTLY.

MAXIMUM ALLOWABLE TOLERANCES HAVE BEEN DETERMINED AND DEVIATIONS WILL BE CAUSE FOR REJECTION. REMOVE ALL BURRS AND SHARP EDGES

A-622 B



SEE A-620 FOR COMPONENTS & WIRING ASS'Y. OF BOARD.



WIRING

1	6	TE 104-2	GROUND, LUG		
1	5	SCBP0632BN8	SCREW, MACH.		
1	4	IM-107	200KC OVEN INSULATOR		
1	3	SCFP0632BN7	SCREW, MACH.		
1	2	MS-209	200KC OVEN PLATE		
1	1	A-620	TERM. BD. COMP. SUB-ASS'Y.	200KC	
REQ.	ITEM	PART NO.	DESCRIPTION	SYMBOL	
//			STOCK SIZE		
//		//		MATERIAL WEIGHT PER PC.	
//			TYPE & TEMPER		
//			HEAT TREAT. SPEC.		
//			FINISH & SPEC. NO.		
THE TECHNICAL MATERIEL CORP. MAMARONECK. NEW YORK TERM. BD., INSULATOR, & PLATE SUB-ASS'Y. 16 12-9-53					
DRAWN		ELEC. DES. APP.		MECH. DES. APP.	
CHECKED		FINAL APPROVAL			
A-622 B					

B	B/M UPDATED	10-25-66	17100	WHD			
A	2 ITEM 3 WAS SCBS0632BC6	12-13-54	1	P.B.	JAS		
A	1 ITEMS 5 & 6 ADDED						
ISSUE	ITEM	CHANGED FROM	DATE	CN. NO.	DRAFTS	CHECKER	ENG. APP.

TOLERANCES		SCALE: //	
ALL OTHERS	DEC. DIM. ± FRAC. DIM. ± ANGULAR DIM. ±	DRILL, PUNCH, COMMERCIAL STOCK SIZES AND MANUFACTURERS TOLERANCES ARE NOT INCLUDED.	

1	AMT PER UNIT	XFK	MODEL	A-627	PROJECT NO.	12-9-53	DATE
---	--------------	-----	-------	-------	-------------	---------	------

USED ON