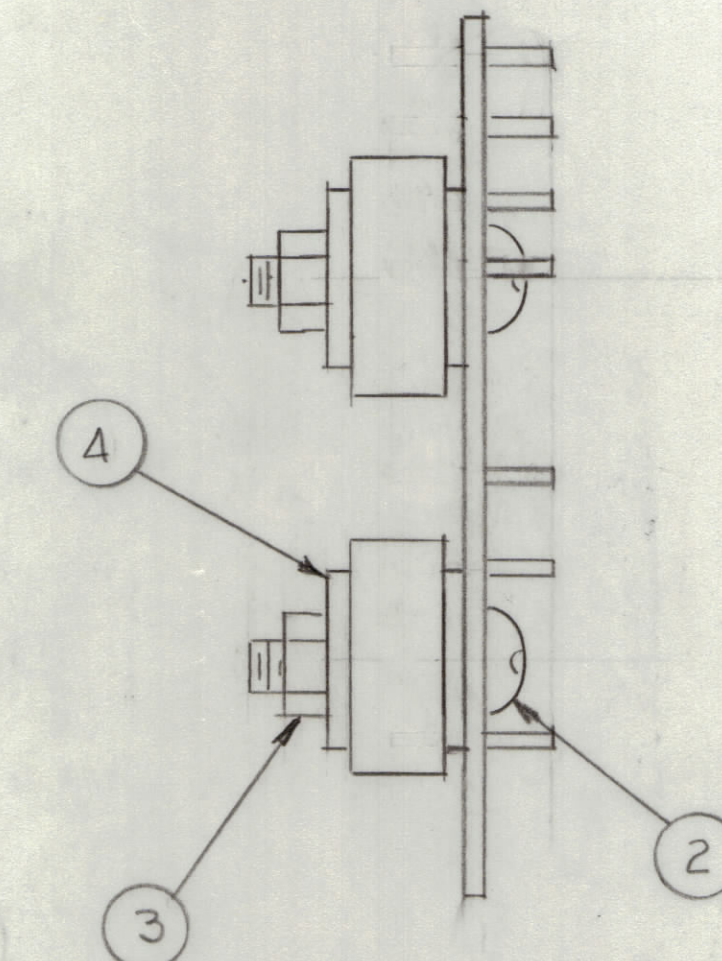
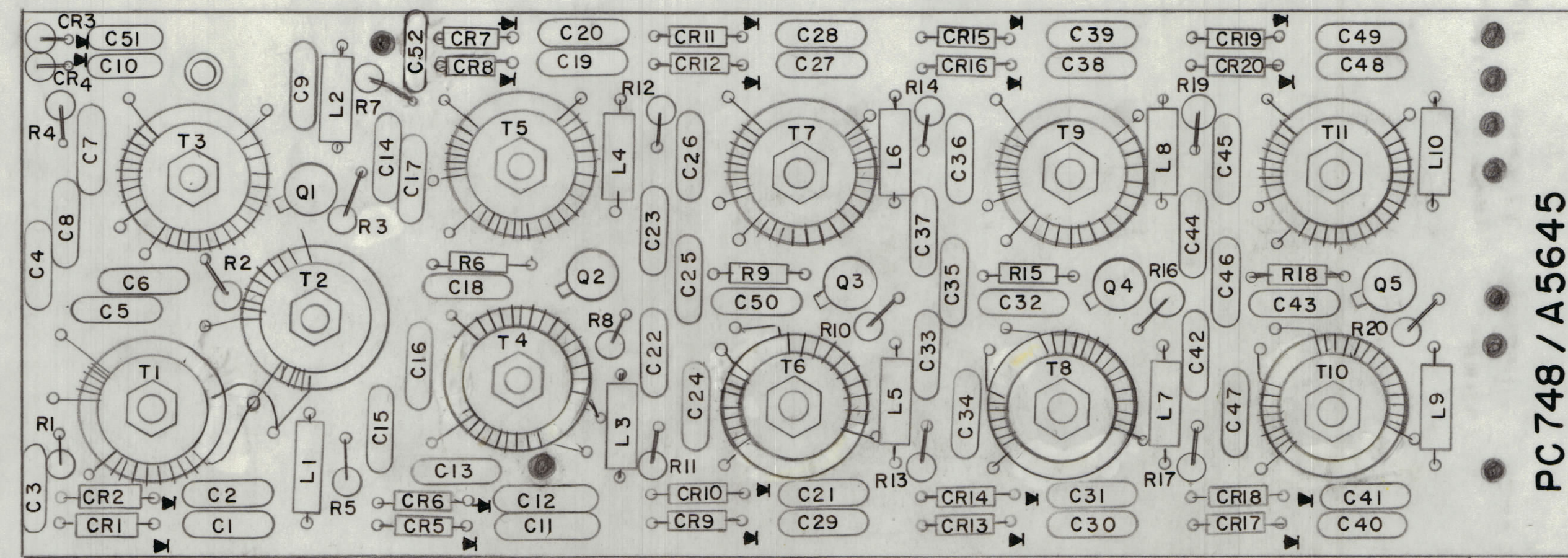


| REVISIONS | | | | | | | | |
|-----------|----|-------|------|------|-----|-------------|------|----------|
| E.M.N. | NO | DRAFT | CHKD | ZONE | LTR | DESCRIPTION | DATE | APPROVED |
| | | | | | | | | |



ASSEMBLY NOTES

1. TO MOUNT COMPONENTS INSERT LEADS THROUGH HOLES.
2. CAUTION, WHEN APPLYING HEAT & SOLDER TO LEAD & FOIL.
3. CLEAN & INSPECT AS PER SPEC S676.
4. FOR ELECTRICAL COMPONENT PART NUMBERS REFER TO NPL A
5. USE SYMBOL NUMBERS FOR ASSY. REF.

| QTY. REQ. | ITEM | PART NO. | DESCRIPTION | SYMBOL |
|-----------|------|--------------|----------------------|--------|
| X | 5 | BS 100 | SOLDER TIN ALLOY | |
| 4 | 4 | WA109-54 | WASHER, FIBER | |
| 2 | 3 | NT1370632 | NUT, HEX NYLON | |
| 2 | 2 | SC1A30632B10 | SCREW, MACHINE NYLON | |
| 1 | 1 | PC 748 | PRINTED CIRCUIT BD | |

REF: CK 2152

| | | |
|---|---------------|----------|
| 1 | GPR-110 A | |
| QTY / UNIT | MODEL USED ON | ASSY NO. |
| APPLICATION | | |
| CODE | | |
| <small>NOTICE TO PERSONS RECEIVING THIS DRAWING</small> <small>THE TECHNICAL MATERIEL CORPORATION claims proprietary right in the material disclosed hereon. This drawing is issued in confidence for engineering information only and may not be reproduced or used to manufacture anything shown hereon without permission from THE TECHNICAL MATERIEL CORPORATION to the user. This drawing is loaned for mutual assistance and is subject to recall at any time.</small> | | |
| MATERIAL | | |
| FINISH | | |

| FINAL APPROVAL | | DATE | LIST OF MATERIAL | |
|----------------|--------|----------------|---|----------|
| MECH. DES. | | DATE | THE TECHNICAL MATERIEL CORP. MAMARONECK, NEW YORK ASSY PRINTED CIRCUIT BD I PRESELECTOR FILTER MULTI BAND | |
| ELECT. DES. | | DATE | | |
| CHECKED | | DATE | | |
| DRAWN | G.D.L. | DATE 12-27-76 | | |
| SIZE | | CODE IDENT NO. | DWG NO. | ISSUE |
| D | | 82679 | A5645 | X |
| SCALE 2:1 | | | | SHEET OF |