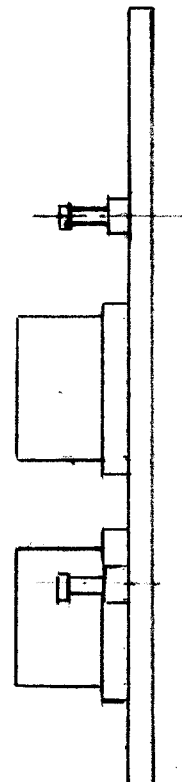
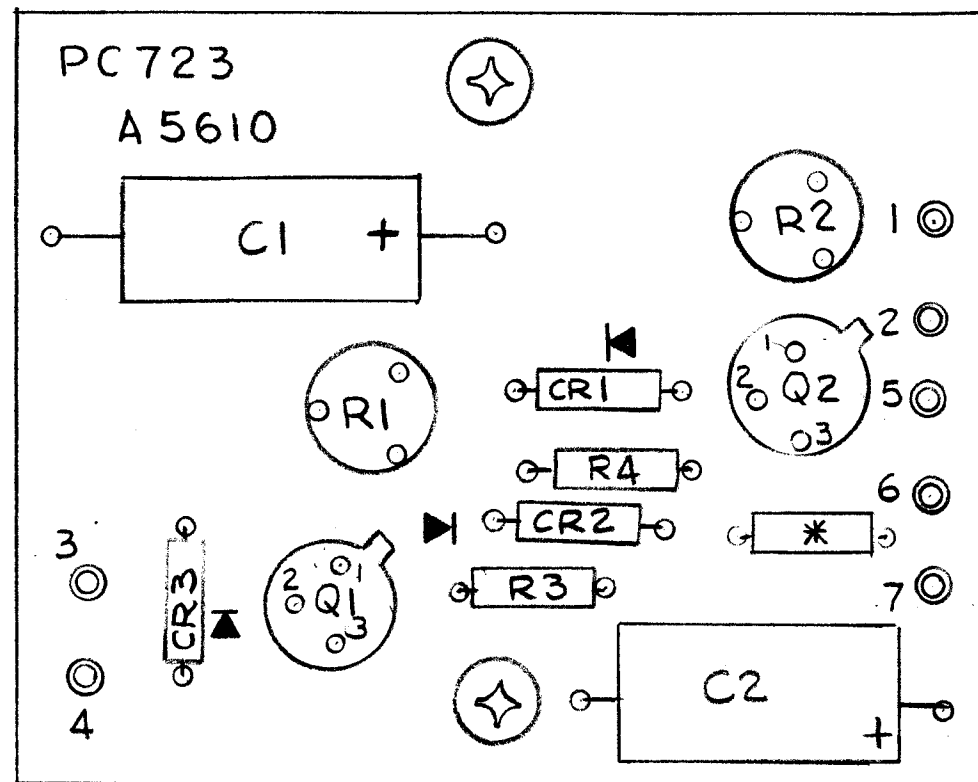


REVISIONS							
E.M.N. NO.	DRAFT	CHKD	ZONE	LTR	DESCRIPTION	DATE	APPROVED
				X	EXP. RELEASE		
				Ø	ORIGINAL RELEASE FOR PRODUCTION	1/2/75	
21290	<i>DL</i>	<i>DL</i>		A	NOTE (6)* Added	9-10-75	



ASSEMBLY NOTES

1. TO MOUNT COMPONENTS INSERT LEADS THROUGH HOLES.
2. CAUTION, WHEN APPLYING HEAT & SOLDER TO LEAD & FOIL.
3. CLEAN & INSPECT AS PER SPEC S676.
4. FOR ELECTRICAL COMPONENT PART NUMBERS REFER TO NPL A5610
5. USE SYMBOL NUMBERS FOR ASSY. REF.

* 6. USE ONLY FOR HFL100 (R5)

Z104

REQ'D	ITEM	PART NUMBER	DESCRIPTION	SYM.
X	2	BS 100	SOLDER, TIN ALLOY	
1	1	PC723	PRINTED CIRCUIT BD	

LIST OF MATERIAL

1	HFL-100	
QTY / UNIT	MODEL USED ON	ASS'Y NO.
APPLICATION		
	CODE	

NOTICE TO PERSONS RECEIVING THIS DRAWING
 THE TECHNICAL MATERIEL CORPORATION claims proprietary right in the material disclosed hereon. This drawing is issued in confidence for engineering information only and may not be reproduced or used to manufacture anything shown hereon without permission from THE TECHNICAL MATERIEL CORPORATION to the user. This drawing is loaned for mutual assistance and is subject to recall at any time.

UNLESS OTHERWISE SPECIFIED DIMENSIONS ARE IN INCHES AND INCLUDE CHEMICALLY APPLIED OR PLATED FINISHES		FINAL APPROVAL <i>DL</i>	DATE 12/31/74
DECIMALS .X ± .05 .XX ± .01 .XXX ± .005	FRACTIONS 1/64 ANGLES 0° -30'	MECH. DES. E. IANNUZZI	DATE 12-31-74
MATERIAL		ELECT. DES.	DATE
FINISH		CHECKED	DATE
		DRAWN G. DEL	DATE 11-16-74

THE TECHNICAL MATERIEL CORP. MAMARONECK, NEW YORK			
ASSY PRINTED CIRCUIT BD OVERLOAD CIRCUIT			
SIZE B	CODE IDENT. NO. 82679	DWG NO. A5610	ISSUE A
SCALE 2:1		SHEET OF	