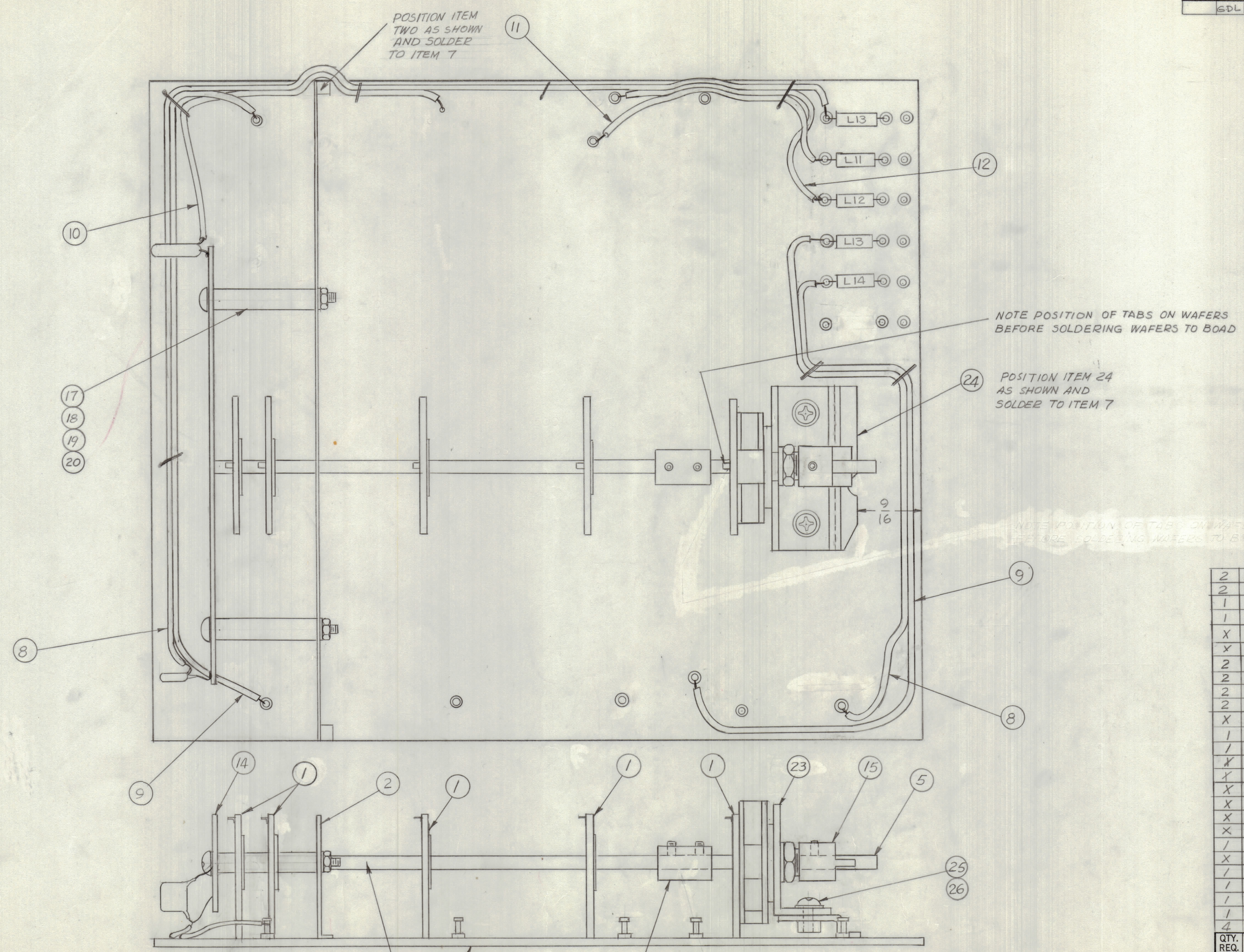


REVISIONS							
E.M.N.O	DRAFT	CHKD	ZONE	LTR	DESCRIPTION	DATE	APPROVED
	EDL			XI	SHEET ONE REDRAWN & REVISED	6-1-76	



QTY.	ITEM	PART NO.	DESCRIPTION	SYMBOL
2	26	LW104MRN	LOCK WASHER	
2	25	SCBP0440BN3	SCREW, MACHINE	
1	24	MS 6541	BRACKET, DETENT	
1	23	MS 6560	BRACKET, DETENT	
X	22	MWC 22(8)U	WIRE-ELEC.	
X	21	WI 100-7	BUSS WIRE	
2	20	LWE04MRN	LOCK WASHER	
2	19	NTH0440BN6	NUT, HEX.	
2	18	SCBP0440BN20	SCREW, MACHINE	
2	17	TE 117-31	SPACER	
X	16	RG 188 1U	COAXIAL CABLE	
1	15	PM 1579	SHAFT, COUPLING	
1	14	A4977(PC77)	ASSY PC BOARD	
X	13	MWC 26(9)U	WIRE ELEC	
X	12	MWC 26(7)U	WIRE ELEC	
X	11	MWC 26(3)U	WIRE ELEC	
X	10	MWC 26(2)U	WIRE ELEC	
X	9	MWC 26(6)U	WIRE ELEC	
X	8	MWC 26(0)U	WIRE ELEC	
1	7	P0702	PRINTED CIRCUIT BD	
X	6	BS100	SOLDER TIN ALLOY	
1	5	DT110	SWITCH, DETENT	
1	4	PM 1569	SHAFT, SWITCH	
1	3	MC 126-	COUPLING SHAFT	
1	2	MS 6511-4	SHIELD RF	
4	1	WS145	WAFER SWITCH	

LIST OF MATERIAL				
QTY. REQ.	ITEM	PART NO.	DESCRIPTION	SYMBOL
FINAL APPROVAL _____ DATE _____				
MECH. DES. _____ DATE _____				
ELECT. DES. _____ DATE _____				
CHECKED _____ DATE _____				
DRAWN G.D.L. DATE 6-1-76				
MATERIAL			SIZE	CODE IDENT NO. DWG NO.
FINISH			D	82679 A4977
			SCALE 2-1	ISSUE XI
			SHEET 1 OF 2	

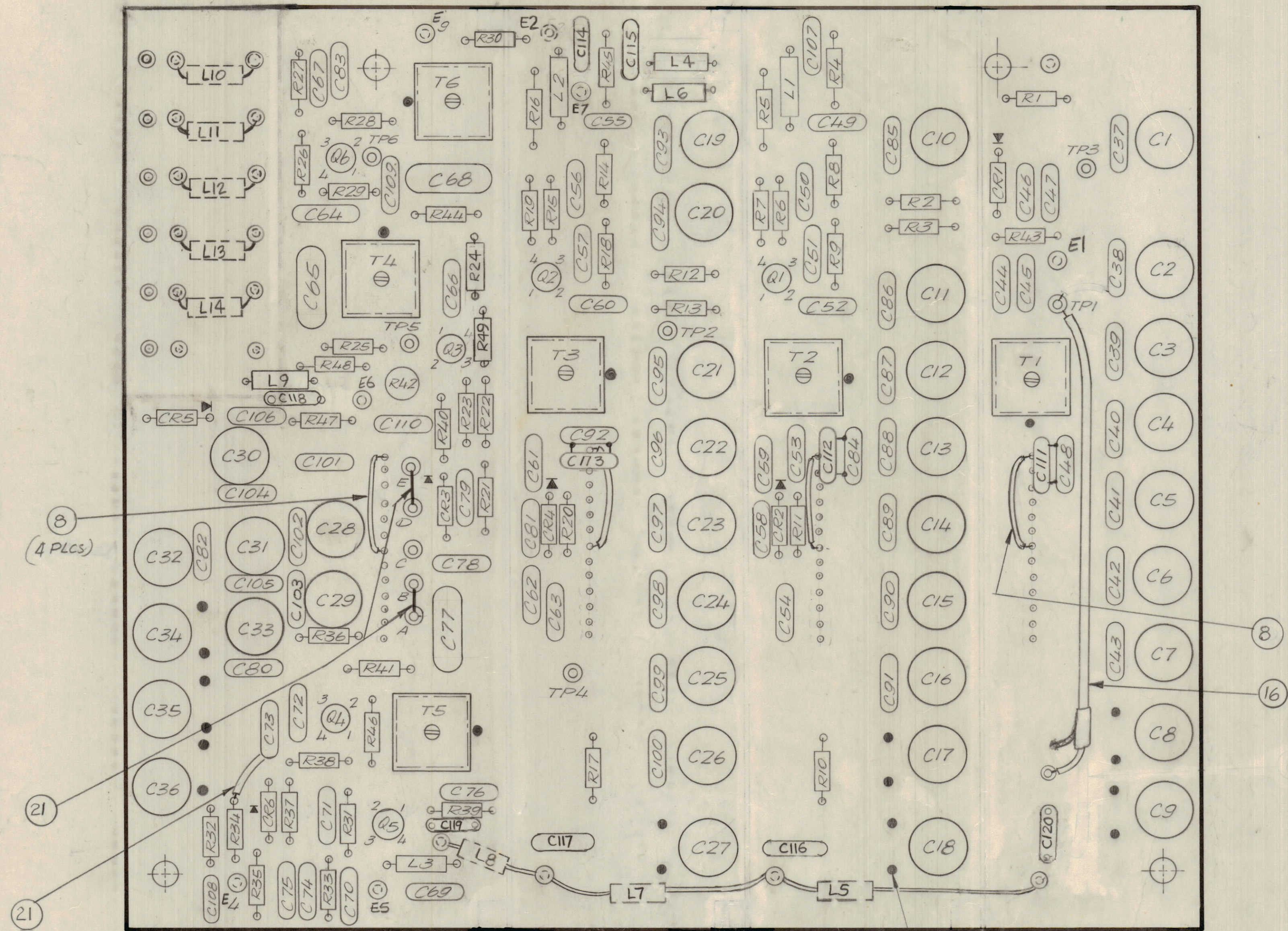
1	GPR-110	
QTY / UNIT	MODEL USED ON	ASS'Y NO.
APPLICATION		
CODE		
<small>NOTICE TO PERSONS RECEIVING THIS DRAWING</small> <small>THE TECHNICAL MATERIEL CORPORATION claims proprietary right in the material disclosed hereon. This drawing is issued in confidence for engineering information only and may not be reproduced or used to manufacture anything shown hereon without permission from THE TECHNICAL MATERIEL CORPORATION to the user. This drawing is loaned for mutual assistance and is subject to recall at any time.</small>		

UNLESS OTHERWISE SPECIFIED DIMENSIONS ARE IN INCHES AND INCLUDE CHEMICALLY APPLIED OR PLATED FINISHES

TOLERANCES ON
 DECIMALS FRACTIONS
 .X ± .05 ± 1/64
 .XX ± .01 ANGLES
 .XXX ± .005 ± 0° -30'

NOTE: COMPONENTS NOT SHOWN IN THIS VIEW SEE SHEET 2

REVISIONS							
E.M.N.O.	DRAFT	CHKD	ZONE	LTR	DESCRIPTION	DATE	APPROVED
				XI	ITEM (11) MS6611-1 DELETED COMPONENTS ADD - SEE SHEET 1	6-1-76	



- ASSEMBLY NOTES**
1. TO MOUNT COMPONENTS INSERT LEADS THROUGH HOLES.
 2. CAUTION, WHEN APPLYING HEAT & SOLDER TO LEAD & FOIL.
 3. CLEAN & INSPECT AS PER SPEC S676.
 4. FOR ELECTRICAL COMPONENT PART NUMBERS REFER TO NPL A4977
 5. USE SYMBOL NUMBERS FOR ASSY. REF.

QTY. REQ.	ITEM	PART-NO.	DESCRIPTION	SYMBOL		
LIST OF MATERIAL						
	FINAL APPROVAL	DATE	THE TECHNICAL MATERIEL CORP. MAMARONECK, NEW YORK <i>ASSY. PRINTED CIRCUIT BD.</i> 3-2 MC TUNEABLE IF			
	MECH. DES.	DATE				
	ELECT. DES.	DATE				
	CHECKED	DATE				
	DRAWN	9E	DATE	2/29/74		
MATERIAL		SIZE	CODE	IDENT NO.	DWG NO.	ISSUE
FINISH		D	82679	A4977	XI	
SCALE 2:1					SHEET 2 OF 2	

QTY / UNIT	MODEL USED ON	ASS'Y NO.
APPLICATION		
CODE		

NOTICE TO PERSONS RECEIVING THIS DRAWING
 THE TECHNICAL MATERIEL CORPORATION claims proprietary right in the material disclosed hereon.
 This drawing is issued in confidence for engineering information only and may not be reproduced or used
 to manufacture anything shown hereon without permission from THE TECHNICAL MATERIEL CORPORATION
 to the user. This drawing is loaned for mutual assistance and is subject to recall at any time.

FILL WITH SOLDER

POSITION ITEMS 8, 16,
 ADDED TO BOARD
 AS SHOWN.

8
 (4 PLCS)

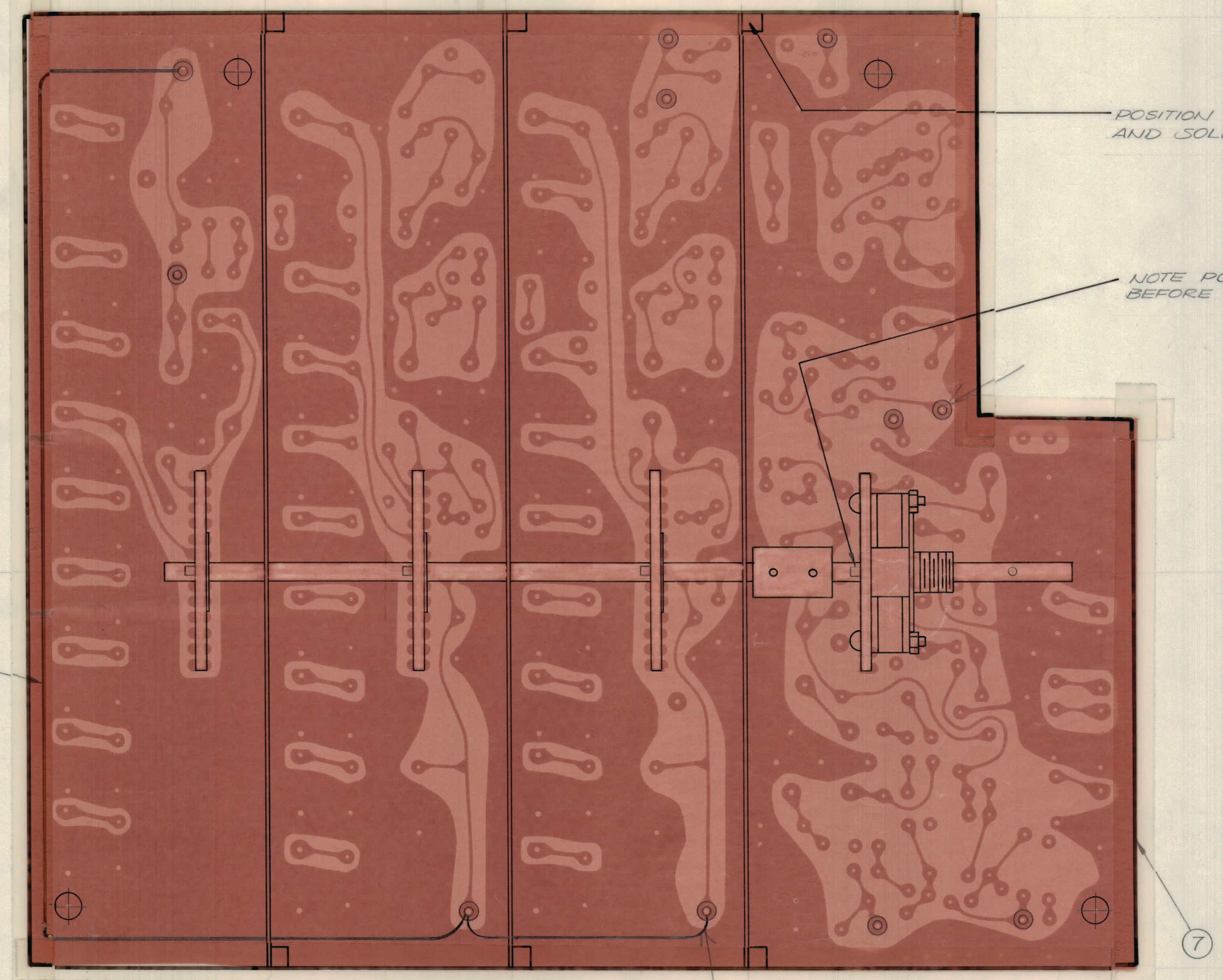
21

21

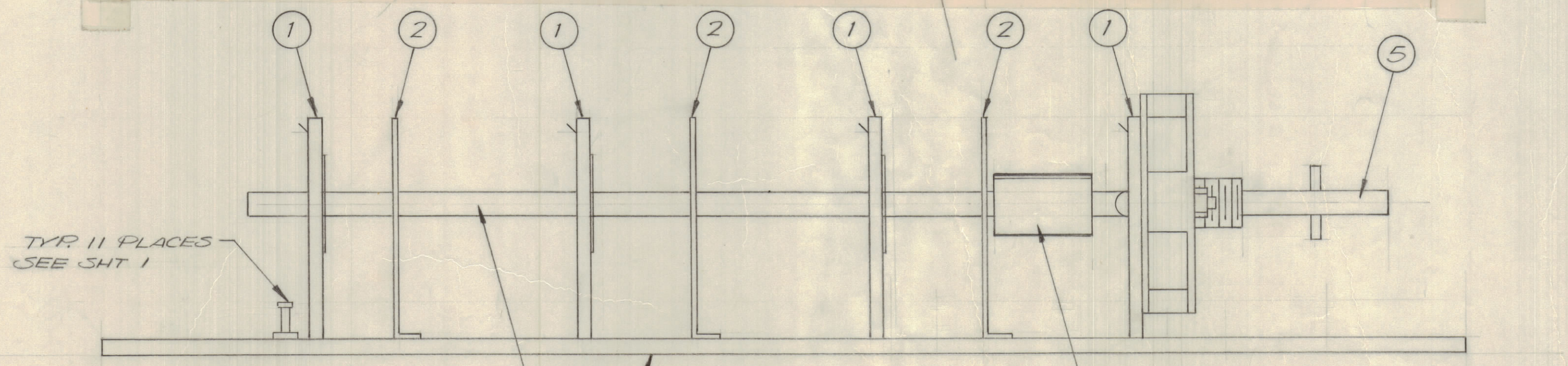
8

16

A4977



SHEET ONE
REDRAWN



NOTE: COMPONENTS NOT SHOWN IN THIS VIEW SEE SHEET 2

QTY. REQ.	ITEM	PART NO.	DESCRIPTION	SYMBOL
1	11	MS6511-1	SHIELD RF	
1	10	MS6511-2	SHIELD RF	
1	9	MS6511-3	SHIELD RF	
X	8	MWC 26(0)U	WIRE, ELEC.	
1	7	PC 702	PRINTED CIRCUIT BD.	
X	6	BS100	SOLDER TIN ALLOY	
1	5	DT 110	SWITCH, DETENT	
1	4	PM 1569	SHAFT, SWITCH	
1	3	MC 126-A1	COUPLING, SHAFT	
3	2	MS6511-4	SHIELD RF	
4	1	W3145	WAFER, SWITCH	

LIST OF MATERIAL

UNLESS OTHERWISE SPECIFIED DIMENSIONS ARE IN INCHES AND INCLUDE CHEMICALLY APPLIED OR PLATED FINISHES	FINAL APPROVAL	DATE	THE TECHNICAL MATERIEL CORP. MAMARONECK, NEW YORK
TOLERANCES ON DECIMALS X ± .05 .XX ± .01 .XXX ± .005	MECH. DES.	DATE	
	ELECT. DES.	DATE	
	CHECKED	DATE	
	DRAWN	DATE	ASSY. PRINTED CIRCUIT BD. 3-2 MCTUNEABLE IF
MATERIAL			SIZE CODE IDENT NO. DWG NO.
FINISH			D 82679 A4977
			SCALE 2:1 SHEET 1 OF 2

GPR 110		
QTY / UNIT	MODEL USED ON	ASS'Y NO.
APPLICATION		
CODE		
NOTICE TO PERSONS RECEIVING THIS DRAWING THE TECHNICAL MATERIEL CORPORATION claims proprietary right in the material disclosed hereon. This drawing is issued in confidence for engineering information only and may not be reproduced or used to manufacture anything shown hereon without permission from THE TECHNICAL MATERIEL CORPORATION to the user. This drawing is loaned for mutual assistance and is subject to recall at any time.		